



**Enjoy your
garden.**

Bosch Garden Tools 2011



BOSCH
Invented for life

New! Products for 2011

Rotak corded with
'Ergoflex System'

Rotak LI with
'Ergoflex System'

AHS corded
hedgcutters

ALB 18 LI
garden blower

Contents

Lawncare

- 6** Cordless lawnmowers
- 7-9** Corded lawnmowers
- 10-11** Cylinder lawnmowers
- 12-13** Lawnraker and Verticutter

Cutting lawn edges

- 14-15** Cordless grass shears
- 16-18** Cordless grass trimmers
- 19-20** Corded grass trimmers

Shrub and hedge care

- 21-22** Cordless shrub shears
- 23-25** Cordless hedgecutters
- 26-28** Corded hedgecutters

Tree care

- 29** Cordless secateur
- 30** Cordless blower
- 31** Cordless chainsaw
- 32-34** Corded chainsaws
- 35-37** Shredders

Cleaning

- 38-41** High-pressure washers

Accessories

- 42-43** Product accessories

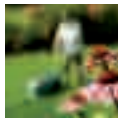
Always one step ahead with Bosch.

Leading technology that helps with everyday gardening work.



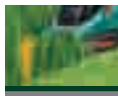
Bosch Lithium-Ion Technology

Bosch combines state-of-the-art lithium-ion battery technology with optimised motors and electronic components. For example, the Bosch Electronic Cell Protection (ECP) is unique in the market and protects lithium-ion batteries against excessive temperatures and overload giving them a longer working lifetime. Bosch was the first to offer cordless garden tools with lithium-ion technology and now has a complete range from secateurs to lawnmowers.



'Efficient Energy Management'

This innovation increases the run time of the lithium-ion batteries in the Rotak LI by up to 15%. The intelligent cutting electronics deliver exactly the required amount of energy to suit the length and density of the grass, and keep the blade rotation speed constant. When the motor is switched off, the energy recovery system converts the energy generated by the blade run-down motion into electrical energy, which is fed back into the battery.



POWERDRIVE MOTOR

Powerdrive Motor

The innovative reduction gear unit converts the high speed of the motor into enormous power. If it is slowed down by resistance, the torque automatically increases and the motor continues to work powerfully, even under difficult conditions and high work load.



Innovative Grass Combs

Wider than the front wheels of the lawnmower, the innovative grass combs enable cutting of grass growing close to the edge due to their special design.



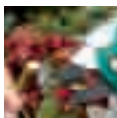
'Ergoflex System'

Bosch strives to design garden tools that are easy-to-use with optimal ergonomics. The newest range of Rotak mowers benefits from the 'Ergoflex System', offering ergonomically designed and adjustable handles to improve body posture and reduce muscle strain whilst mowing the lawn. The 'Ergoflex System' is approved by the renowned German institution AGR which promotes research into the prevention of back problems.



Electronic 'Anti-Blocking System'

If a thick branch cannot be cut through immediately when using lithium-ion powered shrub shears or hedgecutters, the innovative micro-electronics detect this and instantly adjust the running direction of the blades to continue cutting powerfully through wood where other tools would stall.



'Power-Blade System'

The ciso trigger system specially developed by Bosch combined with the bypass cutting system prevents unintentional cuts and allows for a safe, clean and fibre-free cutting result.



'Jet-Collect System' – ALR and AVR lawn care tools

The innovative drum with stainless steel blades or spring steel tines and airflow inlets lift and remove thatch, moss and weeds. The lawn debris is drawn into the collection box by a powerful airflow that prevents clogging.



Effective 'Turbine-Cut System' – AXT TC versions

This newly developed turbine cutting mechanism makes it possible to shred greenery and hard wood together. The 8-bladed cutter in conjunction with the hopper design enables optimum automatic feed and material throughput of up to 230 kg/h. This combination ensures efficient work with virtually no stalling, regardless of the garden material processed.

New! Rotak 34 LI, 37 LI and 43 LI Ergoflex cordless lawnmowers.

No petrol, no cable, full power.

34 cm cutting width

- ▶ Powered by a 36 V / 2.6 Ah 'High-Power' lithium-ion battery
- ▶ 'Ergoflex System' allows left and right handed operation for more convenience and ergonomic mowing
- ▶ Charger with battery status indicators
- ▶ 40 l grassbox capacity
- ▶ Integrated 'Grass combs' to cut close to the edge
- ▶ 'Efficient Energy Management'
- ▶ 10 heights of cut settings (20–70 mm)
- ▶ Integrated carry handle
- ▶ Fully charged in 90 minutes
- ▶ Weight at only 12.9 kg



Also available

New! Rotak 37 LI

- ▶ 37 cm cutting width
- ▶ 40 l grassbox capacity
- ▶ Weight 13 kg
- ▶ 60 min charge time

New! Rotak 43 LI

- ▶ 43 cm cutting width
- ▶ 50 l grassbox capacity
- ▶ Weight 13.7 kg
- ▶ 2 batteries included

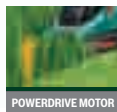


New! Rotak 34 Ergoflex lawnmower.

Effortless control thanks to an innovative design.

34 cm cutting width for medium-sized lawns

- ▶ 1400 W Powerdrive Motor
- ▶ 'Ergoflex System' allows left and right handed operation for more convenience and ergonomic mowing
- ▶ 40 l grassbox capacity
- ▶ Integrated 'Grass combs' to cut close to the edge
- ▶ Fold-down, height adjustable handles
- ▶ 5 heights of cut setting (20–70 mm)
- ▶ Integral carry handles
- ▶ Weight at only 13 kg



POWERDRIVE MOTOR



New! Rotak 40 and 43 Ergoflex lawnmowers.

Powerful cutting and high torque.

40 cm cutting width for large-sized lawns

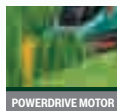
- ▶ 1700 W Powerdrive Motor
- ▶ 'Ergoflex System' for ergonomic mowing
- ▶ Integrated 'Grass combs' to cut close to the edge
- ▶ 22 Nm torque
- ▶ Integrated carry handle
- ▶ 50 l grassbox capacity
- ▶ 10 height of cut settings (20–70 mm)
- ▶ Weight at only 12.4 kg



Also available

New! Rotak 43 Ergoflex

- ▶ 1800 W Powerdrive™ Motor
- ▶ 23 Nm torque
- ▶ 43 cm cutting width
- ▶ 50 l grassbox capacity
- ▶ Weight 12.6 kg



New! Rotak 32 lawnmower.

Mowing right up to the edge is easy.

32 cm cutting width for smaller lawns

- ▶ 1100 W Powerdrive Motor
- ▶ Integrated 'Grass combs' to cut close to the edge
- ▶ Two position fold-down handles
- ▶ Integrated carry handle
- ▶ 31 l grassbox capacity
- ▶ Height of cut settings (20–60 mm)
- ▶ Weight at only 6.8 kg

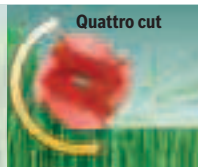


ASM 32 cylinder mower.

Precise cutting for a neat lawn.

32 cm cutting width for small to medium-sized lawns

- ▶ 360 W motor
- ▶ Scissor action cylinder blades for a fine finish
- ▶ 31 l grassbox capacity
- ▶ Fold down handles
- ▶ 5 height of cut settings (12–42 mm)
- ▶ Weight only 10.4 kg



AHM 38 G hand mower.

A perfect cut for small lawn areas.

38 cm cutting width for small-sized lawns

- ▶ Variable height-of-cut adjustment
- ▶ 5 curved blades made of hardened steel
- ▶ Scissor like cut for a neat finish
- ▶ Cylinder cutting system
- ▶ Height of cut settings (15–43 mm)
- ▶ Grassbox included
- ▶ Weight at only 7 kg

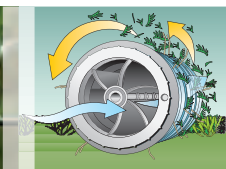
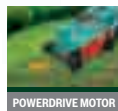


ALR 900 lawn raker.

Thorough moss removal and aeration.

Fast and efficient removal of moss and thatch

- ▶ 900 W Powerdrive Motor
- ▶ 50 l grassbox capacity
- ▶ Four working heights from +10 mm to -5 mm
- ▶ 'Jet-Collect System' with ten double wound spring tines
- ▶ Fold-down handles for compact storage
- ▶ Weight at only 9.4 kg

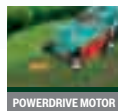


AVR 1100 verticutter.

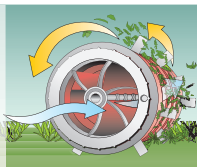
Deep cutting for moss removal and reseedling.

Aerating and removing rooted thatch and moss

- ▶ 1100 W Powerdrive Motor
- ▶ 50 l grassbox capacity
- ▶ Four working heights from +5 mm to -10 mm
- ▶ 'Jet-Collect System' with 14 slitting blades
- ▶ Fold-down handles for compact storage
- ▶ Weight at only 9.9 kg



POWERDRIVE MOTOR



Isio cordless grass shear.

The original: lightweight and powerful.

Ideal for shrub shearing and lawn edging

- ▶ Powered by a 3.6 V lithium-ion battery
- ▶ 'Anti-Blocking System' aids continuous cutting and eliminates stalling
- ▶ Up to 50 minutes run time
- ▶ 80 mm blade width
- ▶ Tool-less blade change
- ▶ Replacement blades and telescopic handle available
- ▶ Battery status indicator
- ▶ Weight at only 500 g



Also available

Isio shape and edge set

- ▶ 3.6 V LI battery
- ▶ 80 mm and 120 mm blades
- ▶ Weight 550 g



Isio cordless shape and edging shear.

Light, compact and powerful.

Ideal for shrub shearing and lawn edging

- ▶ Powered by a 3.6 V lithium-ion battery
- ▶ 120 / 80 mm blade width
- ▶ 3.5 hrs charge time
- ▶ Up to 50 minutes run time
- ▶ Battery status indicator
- ▶ Weight at only 550 g



Also available

Isio grass shear

- ▶ 3.6 V LI battery
- ▶ 80 mm grass blade
- ▶ Weight 500 g

Isio shrub shear

- ▶ 3.6 V LI battery
- ▶ 120 mm blade
- ▶ Weight 550 g



ART 23 and 26 LI cordless grass trimmers.

Cordless power up to 800 metres.

▶ **23 cm cutting diameter**

Ideal for small to medium-sized gardens

- ▶ 14.4 V / 1.3 Ah lithium-ion battery
- ▶ 23 cm cutting diameter
- ▶ Innovative polymer blade system
- ▶ 90° rotating head and angle adjustment for edging and trimming
- ▶ Telescopic handle (80–114 cm)
- ▶ Plant protector
- ▶ Wheel set available as an accessory
- ▶ Weight at only 2.3 kg



Also available

ART 26 LI

- ▶ 18 V / 1.3 Ah LI battery
- ▶ 26 cm cutting diameter
- ▶ Weight 2.4 kg

Batteries interchangeable with other 18 V LI hedgecutters, line trimmers and 18 V LI power tools.



ART 23 Easytrim Accu.

Cordless grass trimmer.

Complete freedom of movement for small lawns

- ▶ 14.4 V / 1.5 Ah NiCd battery
- ▶ 23 cm cutting diameter
- ▶ Innovative polymer blade cutting system
- ▶ Supplied with 10 replacement blades
- ▶ Tallest in class
- ▶ Weight at only 2 kg



ART 23 and 26 Accutrim.

Cordless grass trimmers.

► **23 cm cutting diameter**

Complete freedom of movement for medium lawns

- 18 V / 1.5 Ah NiCd battery
- Innovative polymer blade cutting system
- Supplied with 10 replacement blades
- 'Swivel and tilt' head for trimming under bushes or walk behind edging
- Height adjustable telescopic handle
- Weight at only 2.7 kg



Also available

ART 26 Accutrim

- 18 V / 1.5 Ah NiCd battery
- 26 cm cutting diameter
- Weight 3 kg



ART 23 and 26 Easytrim.

Electric grass trimmers.

▶ **23 cm cutting diameter**

Extra power for small to medium lawns

- ▶ 280 W motor
- ▶ Pro-tap spool – 1.6 mm x 4 m line
- ▶ Hook for cable storage
- ▶ Tallest in class
- ▶ Second handle
- ▶ Ergonomic handling
- ▶ Weight at only 1.7 kg



Also available

ART 26 Easytrim

- ▶ 300 W motor
- ▶ 26 cm cutting diameter
- ▶ Weight 1.8 kg



ART 23, 26 and 30 Combitrim.

Electric grass trimmers.

▶ **23 cm cutting diameter**

Extra power for large lawns

- ▶ 400 W motor
- ▶ Supplied with 1 spool pro-tap 1.6 mm x 4 m and 6 extra strong lines
- ▶ 'Swivel and tilt' head for trimming under bushes or walk behind edging
- ▶ Height adjustable telescopic handle
- ▶ Weight at only 2.7 kg



Also available

ART 26 Combitrim

- ▶ 450 W motor
- ▶ 26 cm cutting diameter
- ▶ Weight 3 kg

ART 30 Combitrim

- ▶ 500 W Motor
- ▶ 30 cm cutting diameter
- ▶ Weight 3.4 kg

ART 30 Combitrim supplied with plant protector and wheels as standard.



Isio cordless shrub shear.

The original: lightweight and powerful.

Ideal for shrub shearing

- ▶ Powered by a 3.6 V lithium-ion battery
- ▶ 'Anti-Blocking System' aids continuous cutting and reduces stalling
- ▶ 120 mm blade length
- ▶ Up to 50 minutes run time
- ▶ Battery status indicator
- ▶ Replacement blades available as an accessory
- ▶ Weight at only 550 g



Also available

Isio shape and edge set

- ▶ 3.6 V LI battery
- ▶ 80 mm and 120 mm blades
- ▶ Weight 550 g



Anti-Blocking System



ASB 10,8 LI hedge shear.

Our strongest ever shrub shear.

Convenient, powerful alternative for trimming hedges

- ▶ Powered by a 10.8 V lithium-ion battery
- ▶ 'Anti-Blocking System' aids continuous cutting and eliminates stalling
- ▶ 200 mm blade length
- ▶ Up to 100 minutes run time
- ▶ Battery status indicator
- ▶ 3 hrs charge time
- ▶ Additional blade set available
- ▶ Polecart available as an accessory
- ▶ Weight at only 900 g



Also available

ASB 10,8 LI Set

- ▶ 200 mm shrub blade
- ▶ 120 mm shrub blade
- ▶ 100 mm grass blade



Anti-Blocking System



AHS 54-20 LI cordless hedgecutter.

Cordless mobility and maximum power.

All the power of petrol, without the hassle

- ▶ Powered by a 36 V / 1.3 Ah lithium-ion battery
- ▶ 'Anti-Blocking System' aids continuous cutting and reduces stalling
- ▶ 54 cm blade length
- ▶ Up to 50 minutes run time
- ▶ 20 mm tooth spacing plus saw action
- ▶ Fully charged in only 45 minutes
- ▶ Multi-position switching with soft grip handle
- ▶ Weight at only 3.5 kg



AHS 48 and 52 LI cordless hedgecutters.

Lightweight, maximum performance.

► **48 cm cordless hedgecutter**

Ideal for medium-sized hedges

- 18 V / 1.3 Ah lightweight lithium-ion battery
- 'Anti-Blocking System' aids continuous cutting and reduces stalling
- 48 cm blade length
- 15 mm tooth opening
- Up to 50 minutes run time
- Laser cut, diamond ground blades
- Weight at only 2.2 kg



Also available

AHS 52 LI

- 18 V / 1.3 Ah LI battery
- 52 cm blade
- Weight 2.3 kg

Batteries interchangeable with other 18 V LI hedgecutters, line trimmers and 18 V LI power tools.



Anti-Blocking System



15 mm

AHS 41 and 52 Accu cordless hedgecutters.

Powerful without a cable.

▶ **41 cm cordless hedgecutter**

Ideal for shrubs and privet hedges

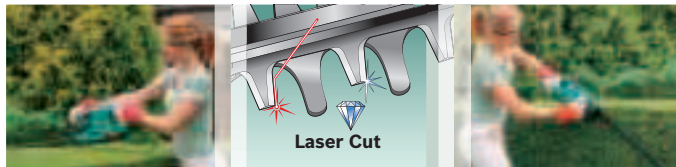
- ▶ 14.4 V / 1.5 Ah NiCd battery
- ▶ 41 cm blade length
- ▶ 15 mm tooth opening
- ▶ Up to 55 minutes run time
- ▶ Ergonomic handle for safe, comfortable use
- ▶ Weight at only 2.5 kg



Also available

AHS 52 Accu

- ▶ 2 x 14.4 V / 1.5 Ah NiCd batteries
- ▶ 52 cm blade
- ▶ Weight 2.6 kg



New! AHS 45-16, 50-16, 55-16 and 60-16 hedgecutters.

Less weight, more power, effortless handling.

▶ 45 cm hedgecutter

Ideal for shrubs and small-leaved hedges

- ▶ 420 W motor
- ▶ 45 cm blade length
- ▶ 16 mm tooth opening
- ▶ Well balanced tool
- ▶ Ergonomic handle for safe, comfortable use
- ▶ Weight at only 2.8 kg



Also available

New! AHS 50-16

- ▶ 450 W motor
- ▶ 50 cm blade
- ▶ Weight 2.6 kg

New! AHS 55-16

- ▶ 450 W motor
- ▶ 55 cm blade
- ▶ Weight 2.7 kg

New! AHS 60-16

- ▶ 450 W motor
- ▶ 60 cm blade
- ▶ Weight 3.5 kg



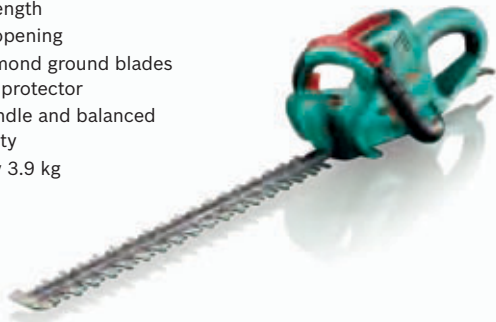
AHS 480-24 T, 550-24 ST and 600-24 ST hedgecutters.

Incredibly strong.

► 48 cm hedgecutter

Ideal for medium-sized hedges

- Powerful 550 W motor
- 48 cm blade length
- 24 mm tooth opening
- Laser-cut, diamond ground blades with blade tip protector
- Ergonomic handle and balanced centre of gravity
- Weight at only 3.9 kg



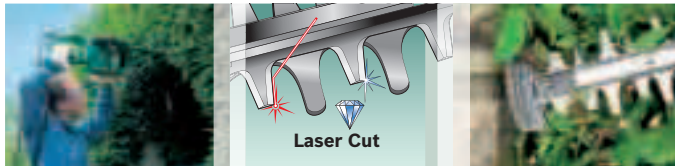
Also available

AHS 550-24 ST

- 600 W motor
- 55 cm blade
- Weight 4.0 kg

AHS 650-24 ST

- 600 W motor
- 65 cm blade
- Weight 4.2 kg



AHS 6000 and 7000 Pro-T hedgecutters.

Powerful top performance.

▶ **60 cm hedgecutter**

Ideal for larger, tougher hedges

- ▶ Powerful 700 W motor
- ▶ 34 mm tooth opening
- ▶ Laser-cut, diamond ground blades with blade tip protector
- ▶ Optimum centre of gravity for balance
- ▶ High torque slipping clutch
- ▶ Weight at only 4.3 kg



Also available

AHS 7000 Pro-T

- ▶ 700 W motor
- ▶ 70 cm blade
- ▶ Weight 4.5 kg



Ciso cordless secateur.

Pruning made easier.

A powered alternative to manual pruning

- ▶ Powerful 3.6 V lithium-ion battery
- ▶ Ideal for single stem pruning up to 14 mm
- ▶ Innovative trigger system allows one cut per second
- ▶ 500 cuts per average pruning session from a single charge
- ▶ Includes safety lock
- ▶ Replacement blade available
- ▶ Mobile phone style charger
- ▶ Weight at only 590 g



New! ALB 18 LI cordless leaf blower.

Tidy up wherever you want.

Banishes leaves from your garden and patio

- ▶ Powered by an 18 V / 1.5 Ah lithium-ion battery
- ▶ 3 hrs charge time
- ▶ Up to 10 minute uninterrupted run-time
- ▶ Max. 210 km/h airspeed
- ▶ Soft grip for convenient working
- ▶ Removable blower tube for storage
- ▶ Weight at only 1.8 kg



Batteries interchangeable with other 18 V LI hedgecutters, line trimmers and 18 V LI power tools.



AKE 30 LI chainsaw.

No petrol, no cable, full power.

Most efficient, powerful and easy-to-use chainsaw

- ▶ Powered by a 36 V / 2.6 Ah 'High-Power' lithium-ion battery
- ▶ Bosch SDS tool-less chain tensioning system
- ▶ Can make up to 100 cuts in 10 cm x 10 cm pine wood with only one battery charge
- ▶ Kick back brake operates in less than 0.1 second
- ▶ Automatic lubrication with oil level indicator (135 ml reservoir)
- ▶ Quick start and always ready to use
- ▶ Large steel gripping teeth and chain catcher
- ▶ 90 minute charge time
- ▶ Weight only 5.2 kg



AKE 40 chainsaw.

Versatile and easy to use.

40 cm chain bar length

- ▶ Powerful 1800 W motor
- ▶ Bosch SDS tool-less chain tensioning system
- ▶ Large steel gripping teeth and chain catcher
- ▶ Extremely fast high chain speed of 9 m/sec
- ▶ Automatic lubrication with oil level indicator
- ▶ Rapid reaction and kick-back brakes
- ▶ Weight only 4.1 kg



AKE 35-19 S and 40-19 S chainsaws.

Incredibly fast.

35 cm chain bar length

- ▶ Powerful 1900 W motor
- ▶ Bosch SDS tool-less chain tensioning system
- ▶ Large steel gripping teeth and chain catcher
- ▶ 12 m/sec chain speed
- ▶ Automatic lubrication with oil level indicator (200 ml reservoir)
- ▶ Weight only 4.4 kg



Also available

AKE 40-19 S

- ▶ 1900 W motor
- ▶ 40 cm bar length
- ▶ Weight 4.5 kg



AKE 35 S chainsaw.

More power, less effort.

35 cm chain bar length

- ▶ Powerful 1800 W motor
- ▶ Bosch SDS tool-less chain tensioning system
- ▶ Large steel gripping teeth and chain catcher
- ▶ 9 m/sec chain speed
- ▶ Rapid reaction kick-back brake and run down brake
- ▶ Automatic lubrication with oil level indicator (200 ml reservoir)
- ▶ Weight only 4.0 kg



AXT 23 and 25 TC turbine cut shredders.

Versatile, multi-purpose shredder.

- ▶ **42 mm cutting diameter**
- 3 in 1 universal shredder for hard wood and greenery**
- ▶ 2300 W motor
- ▶ 215 kg/h throughput ratio
- ▶ Innovative turbine cutting system for cutting hard wood as well as greenery
- ▶ Detachable hopper for compact storage
- ▶ Touch pad controls with reverse
- ▶ 53 litre collection box
- ▶ Weight only 30.5 kg



Also available

AXT 25 TC

- ▶ 2500 W motor
- ▶ 45 mm cutting diameter
- ▶ 230 kg/h throughput ratio



AXT 22 and 25 D quiet drum shredders.

Powerful shredding performance.

- ▶ **38 mm cutting diameter**
- 2200 W drum shredder for medium sized branches**
- ▶ 2200 W motor
- ▶ 180 kg/h throughput ratio
- ▶ 'Cut and crush' drum cutting system
- ▶ Detachable hopper for compact storage
- ▶ Touch pad controls with reverse
- ▶ 53 l collection box
- ▶ Weight only 31.3 kg



Also available

AXT 25 D

- ▶ 2500 W motor
- ▶ 40 mm cutting diameter
- ▶ Weight 31.3 kg



AXT Rapid 2000 and 2200 blade shredders.

Fast shredder performance.

▶ **35 mm cutting diameter**

Ideal for 'green' garden waste

- ▶ 2000 W high speed Powerdrive Motor
- ▶ High material throughput rate up to 80 kg
- ▶ Double sided hardened 'Swiss' blade
- ▶ Full width hopper and plunge feeder
- ▶ Simple stop/start controls
- ▶ Sturdy frame and transport wheels
- ▶ Overload protection
- ▶ Lightweight at only 11.5 kg



Also available

AXT Rapid 2200

- ▶ 2200 W motor
- ▶ 40 mm cutting diameter
- ▶ Weight 12 kg



Aquatak 150 and 160 X High-pressure washers.

The washers made for heavy cleaning.

► **150 bar pressure washer**

Ideal for the toughest cleaning tasks

- 2700 W series motor
- Max. 150 bar pressure
- Max. 550 l/h flow rate
- Auto-stop
- Alloy pump head
- Integrated pressure gauge
- 12 m rubber hose
- Hose reel storage on 160 X
- Weight only 22.3 kg



Supplied with vario jet-fan lance and roto power lance.

Also available

Aquatak 160 X

- 3000 W induction motor
- 155 bar pressure
- 600 l/h max flow rate



Aquatak Clic 125 and 135 High-pressure washers.

Set up and packed away in seconds.

► 125 bar pressure washer

Ideal for regular cleaning tasks

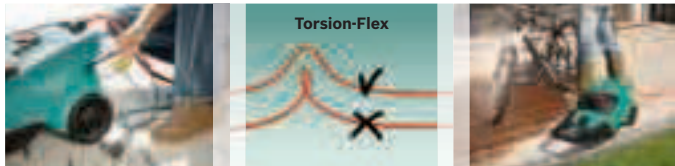
- 1800 W series motor
- Max. 125 bar pressure with Auto-stop
- 410 l/h max. flow rate
- 'Easy-Roll' system for automatic hose and cable rewind
- 9 m kink-free Torsion-Flex pressure hose
- 'Lay-down' working position
- 4 in 1 multi-jet lance
- Self-priming – zero pressure feed
- Weight 13 kg



Also available

Aquatak Clic 135

- 2100 W induction motor
- 135 bar pressure
- 450 l/h max. flow rate



Aquatak 1200 Plus.

High-pressure washers.

Ideal for powerful cleaning of larger areas

- ▶ 1750 W induction motor
- ▶ Max. 120 bar pressure
- ▶ Max. 390 l/h flow rate
- ▶ Auto-stop
- ▶ 6 m hose
- ▶ Weight only 13 kg



Supplied with vario jet-fan lance, roto lance, flexi-jet lance and wash brush.



Aquatak 110, 110 Plus and 115 Plus.

High-pressure washers.

► 110 bar pressure washer

Ideal for cleaning smaller areas

- 1600 W series motors
- Max. 110 bar pressure
- Max. 360 l/h flow rate
- Auto-stop
- 6 m hose
- Weight only 7.2 kg
- Brush supplied with Plus models only



Also available

Aquatak 110 Plus

- 1600 W motor
- 110 bar pressure
- 380 l/h max. flow rate

Aquatak 115 Plus

- 1700 W motor
- 115 bar pressure
- 380 l/h max. flow rate

*Vario jet-fan lance,
roto lance, flexi-jet
lance and wash brush.*



Accessories.

Getting more from your Bosch garden tools.

A complete range of original Bosch accessories is available for all products in this brochure. If you're looking for grass boxes, replacement blades, batteries, chargers or spring steel tines, you'll find details at www.bosch-garden.co.uk.

Lawnmower

Original replacement blades are available for our complete lawnmower range.



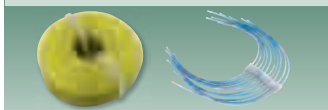
Isio and ASB

Additional blade sets are available for the Grass and Shrub Shears. A telescopic handle is available for the Isio.



Trimmer line

Additional trimmer line is available for corded grass trimmers.



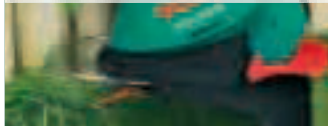
Automatic tap feed spools

Two spools, one for normal grass and one with extra-strong line for more stubborn growth.



Safety plastic blades

24 pack replacement blades are available for cordless grass trimmers.



High-pressure washers

The Bosch range of pressure washer accessories include:

Bosch Aquasurf cleaner

Clean surfaces without spraying water everywhere, and cleans three times as fast as the standard jet lance.



Wash brush

Perfect for washing cars, paintwork and windows, you can achieve gleaming results every time.



Fixed rotary brush

Makes light work of cleaning hard-to-reach surfaces and edges.



Drain cleaner

This ingenious accessory is the quick, easy way to unblock pipes and drains.



Water filter

Fits directly to your high-pressure washer to ensure the water supply is kept clean.



All-purpose cleaner

An all-round cleaner for the house and garden.



Bosch Garden Tools.

100% Quality, 100% Service.

After Sales Service 0844 736 0109

Product Advice 0844 736 0108

Product Knowledge Training 01449 742 031

