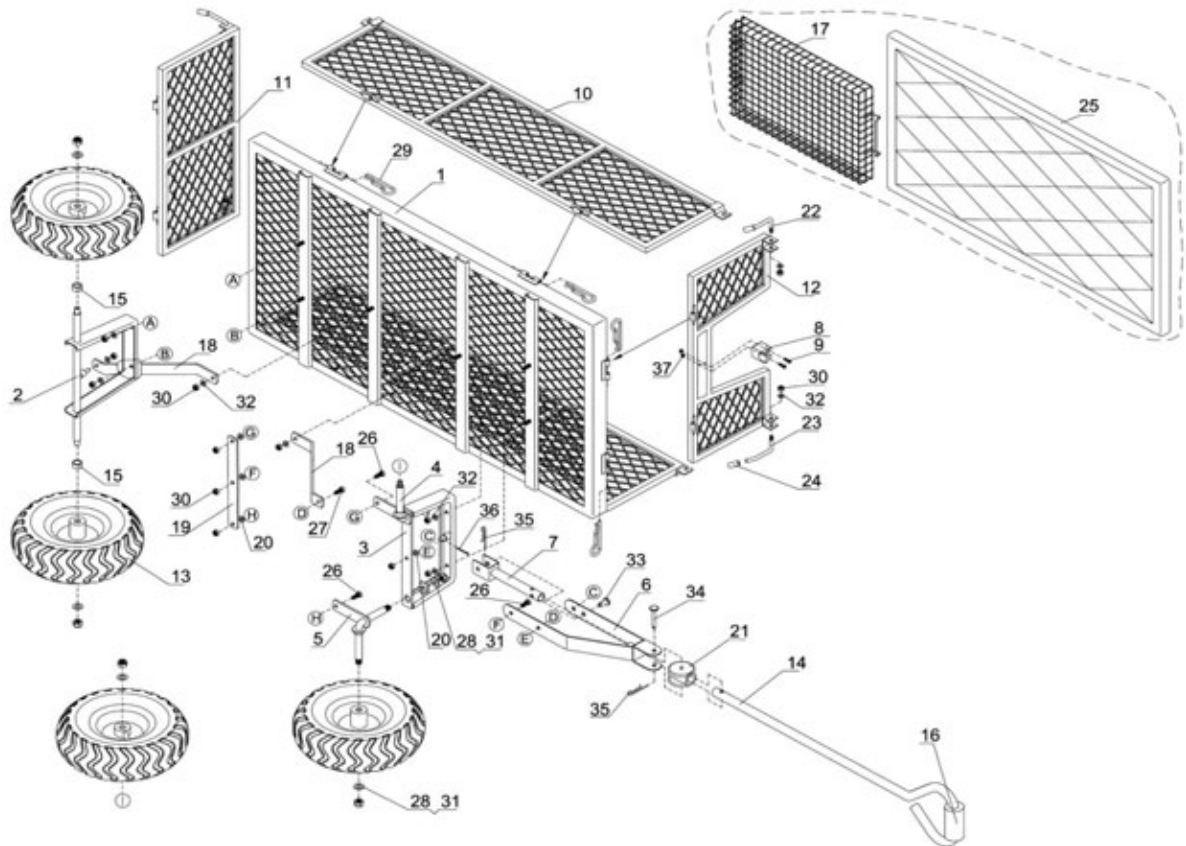


Parts Information: Platform Truck with Sides Pneumatic Tyres 450kg Capacity Model No: CST806



Item	Part No.	Description
1	CST806.01	BOTTOM PANEL
2	CST806.02	BACK WHEEL BRACKET
3	CST806.03	FRONT WHEEL BRACKET
4	CST806.04	AXLE TURNING ASS'Y (L.H)
5	CST806.05	AXLE TURNING ASS'Y (R.H)
6	CST806.06	TURNING AXLE ASS'Y
7	CST806.07	TOW BAR
8	CST806.08N	CLAMP
--	CST806.09	SCREW M5X16 (NOT SHOWN)
9	CST806.09N	SCREW (M5x16)
10	CST806.10	LEFT OR RIGHT SIDE PANEL
11	CST806.11	BACK PANEL
12	CST806.12	FRONT PANEL
13	CST806.13	WHEEL,PNEUMATIC (280x16x100x320)
14	CST806.14	HANDLE
--	CST806.15	SPACER BUSHING (NOT SHOWN)
15	CST806.15N	SPACER BUSHING
16	CST806.16	HANDLE GRIP
17	CST806.17	TOOL BASKET
18	CST806.18	FRONT WHEEL BRACKET
19	CST806.19	FLAT PLATE

--	CST806.20	CONNECTING PLATE (NOT SHOWN)
20	CST806.20N	NYLON WASHER
21	CST806.21	HANDLE CONNECTING SLEEVE
22	CST806.22	LOCK HANDLE (A)
23	CST806.23	LOCK HANDLE (B)
24	TBB230.24	HANDLE SLEEVE
25	CST806.25	PLATFORM
--	CST806.26	HEX BOLT (M8x16) (NOT SHOWN)
26	CST806.26N	HEX BOLT (M8x20)
27	CST806.27	HEX BOLT (M8x25)
28	CST806.28	FLAT WASHER (12mm)
29	CST806.29	HINGE R-PIN
30	NLN8.S	NYLOC NUT M8 ZINC DIN 985 (SINGLE)
31	NLN12.S	NYLOC NUT M12 ZINC DIN 985 (SINGLE)
32	CST806.32	FLAT WASHER (8mm)
33	CST806.33	CONNECTING PLATE PIN
34	CST806.34	HANDLE PIN (8x60)
35	CST806.35	R-PIN
36	CST806.36	COTTER PIN (3x30)
37	NLN5.S	NYLOC NUT M5 ZINC DIN 985 (SINGLE)

NOTE: It is our policy to continually improve products and as such we reserve the right to alter data, specifications and component parts without prior notice.

IMPORTANT: No liability is accepted for incorrect use of product.

WARRANTY: Guarantee is 12 months from purchase date, proof of which will be required for any claim.

Sealey Group, Kempson Way, Suffolk Business Park, Bury St Edmunds, Suffolk. IP32 7AR



01284 757500



01284 703534



sales@sealey.co.uk



www.sealey.co.uk