

CAMPINGAZ 

The power to be free®



Outdoor inspiration

brought to you by Campingaz®

Product Range 2010



Go far with the Campingaz® Fargo™

Take your outdoor cooking further this summer with the Fargo™ from Campingaz®. An ingenious new portable gas barbecue grill that is perfect for the campsite, the beach, the park or even at home. Wherever your travels may take you, you'll go far with the clever design that simply folds to go.



QUICK - easy folding legs



COMPACT - Side tables convert to a protective lid



EFFICIENT - operates off x2 Campingaz® CV470 Plus Cartridges



SPACIOUS - family-sized cooking area



CONVENIENT - strong side tables



Fargo™ Barbecue Grill

Our new Fargo™ Barbecue grill is ingenious. Its integrated handles fold down to form its legs, making it ultra portable and easy to use in a whole range of situations. Also, it can be run from either a cylinder or two cartridges for the Twin Pack.

Range features

- Power: 4.5kW
- Piezo ignition
- 2 foldable side tables/protective lid
- Enamelled cooking grid
- Foldable legs
- Grease tray
- Dimensions: Closed H22 x L62 x W34cm, Legs open, lid closed: H29 x L65 x W34cm, Open: H24 x L112 x W34cm
- Weight: 7kg



Cooking area

1500cm²

Fargo™ BBQ Grill

- Operates off: Campingaz® and other butane cylinders
- Runtime: 8hr 30min on Campingaz® R907

Ref: 205268



NEW



Fargo™ BBQ Grill twin pack

- Operates off: 2 Campingaz® CV470 Plus cartridges
- Runtime: 3hr on x2 Campingaz® CV470 Plus

Ref: 205181

CV470 PLUS



Stoves and lanterns

Camping Chef® range

A classic stove and grill combination for outdoor cooking. You can have tea, toast and a cooked breakfast all on the go at the same time, or prepare a big family meal. Our new model even has legs, making it more comfortable to use and providing additional storage.

Range features

- Power: Stove = 2x 2300 watt;
Grill = 1100 watt
- Gas outflow: Stove = 2x 170g/h; Grill = 80g/h
- Boil time: 6min 30sec (1 litre)
- Runtime: Stove and Grill > 6hr 30min; Stove > 8hr on R907
- Multi-functional stove and grill (toasts)
- Operating off Campinggaz® and others' Butane cylinders



Camping Chef® Plus

Now with legs, this favourite is perfect for a longer stay.

- Easy to store and carry with 4 adjustable legs
- Shelf with large storage capacity
- Carry bag included
- Dimensions: L67 x W38.5 x H74.5cm
- Weight: 7.8kg

Ref: 204318



Camping Chef®

A classic – 2 burner stove plus radiant grill underneath.

- Dimensions: L52.5 x W31 x H22cm
- Weight: 5.8kg

Ref: 69487

Lagon™

A low profile stove with 2 high-power stainless steel burners and 4 non-scratch feet.

- Power: 2x 2200 watt
- Gas consumption: 2x 160g/h
- Runtime: > 7hr 40min on R907
- Dimensions: L50 x W30 x H9cm
- Boil time: 6min 30sec (1 litre)
- Weight: 2.1kg

Ref: 61169



2 Burner Stove Carry Bag

Tough bag designed for carrying 2 burner stoves.

- Integrated zipped pockets
- 2 webbing shoulder straps with foam reinforcement
- Textile material: PVC coated Polyester
- Dimensions: L57 x W35 x H14cm

Ref: 202680

Camping Kitchen® range

An extremely convenient, contemporary combination of a two-burner stove and grill for the campsite, with extra storage spaces, allowing you to prepare complete family meals in minutes.

Range features

- 1700 watt + 2300 watt
- Gas outflow: 122g/h + 170g/h
- Boil time: 5min 20sec (1 litre)
- Runtime: > 9hr 30min on R907 (both burners)



Camping Kitchen® Plus

Grill and stove combination mounted on a stand, with windshields that can be used as side tables.

- Dimensions: L60 x W48.5 x H76cm
- Weight: 8.9kg

Ref: 202666



Camping Kitchen® Extra

Stable stand with large shelf and textile larder which converts to a handy carry bag. The windshields can be used as side tables.

- Dimensions: L60 x W48.5 x H76cm
- Weight: 10kg

Ref: 202664



Camping Kitchen® Grill

Low profile, 2 burner stove with removable, non-stick griddle with easy-clean grease collection area.

- Dimensions: L53.5 x W33.5 x H12cm
- Weight: 6kg

Ref: 202665



Camping Kitchen®

Low profile 2 burner stove, for use on the ground or on a table.

- Dimensions: L53.5 x W33.5 x H12cm
- Weight: 4.5kg

Ref: 202663

Stoves and lanterns

Camping Duo™ range

A compact offering with the convenience of 2 burners and large pan supports to accommodate wide based pans. The foldable legs further enhance the compactness. There is the option of a cylinder or cartridge operated version, depending on the required usage.



Camping Duo™ Plus CV

A compact, double burner stove designed to operate from Campingaz® CV Plus cartridges. Easy Clic® Plus makes cartridge connection a simple and quick task.

- Easy Clic® Plus, reliable and user friendly cartridge connection
- Foldable legs
- Power: 2x 1500W
- Operates off: Campingaz® CV Plus cartridges
- Boil time: 4min 30sec
- Runtime: > 4hr 30min on Campingaz® CV470 Plus (each burner)
- Weight: 1.8kg

Ref: 204552



Camping Duo™ Plus R

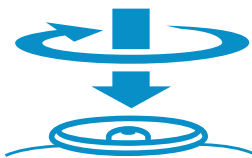
Perfect for longer camping trips, this compact 2 burner stove offers an exceptionally long runtime.

- Foldable legs
- Power: 2x 1500W
- Operates off: Campingaz® cartridges
- Boil time: 5min 45sec
- Runtime: > 15hr on Campingaz® R907
- Weight: 2kg

Ref: 204418



Easy Clic™ PLUS



1. Click.

Simply press the appliance into the valve cartridge.



2. Rotate.

Twist the appliance approx. 45° to the left to secure cartridge.



Camp Bistro®

A trusted companion for a variety of outdoor cooking situations, the Campingaz® Camp'Bistro is a compact and portable, single burner tabletop stove. With its low profile design and large pan support, it is useful for a multitude of occasions such as camping, picnics, and on day trips. It can even be used at home as a barbecue side stove.

Camp Bistro®

User friendly, compact and portable single burner stove. This stove is powerful, cordless and has precise power adjustment for ease of use.

- Cartridge safety locking system
- Piezo ignition
- Enamelled pan support, for easy cleaning.
- Includes a hard plastic carry case
- Runtime: > 1hr 15min on CP250
- Power: 2300 watt

Ref: 203794



Party Grill® + Carry Bag

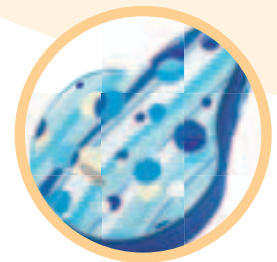
The essential camping companion; this compact, portable stove offers a range of cooking options: grill, griddle or flame stove. It is easy to transport and store with detachable legs, a lockable lid and carry bag. Easy Clic® Plus makes cartridge connection a simple and quick task.



Party Grill® + Carry Bag

- Water compartment to collect the fat
- Power: 1350 watt
- Gas consumption: 99g/h
- Piezo system
- Fully adjustable power
- Boil time: 5min 40sec
- Runtime: > 2hr 30min on CV270
> 4hr 30min on CV470
- Weight: 2.3kg

Ref: 203404



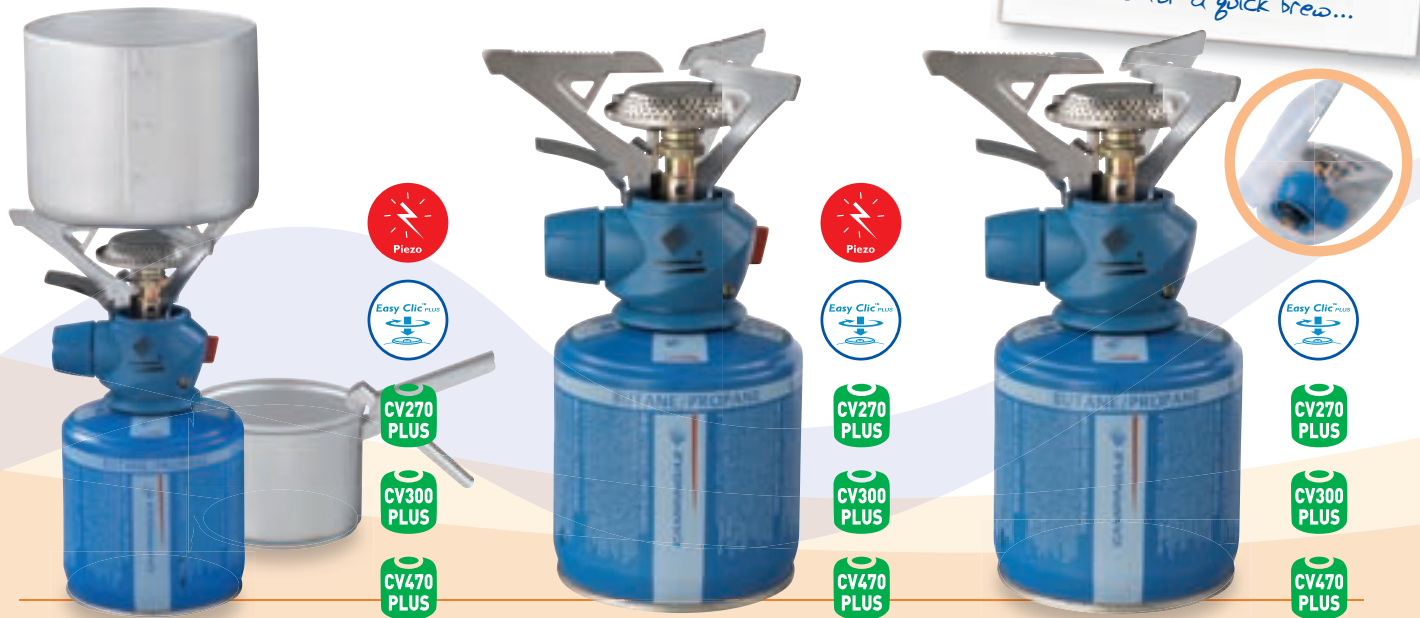
Dimensions (packed down): Ø 32.5cm, H13cm



Stoves and lanterns

Valve cartridge stoves

Stoves that operate off Campingaz® valve cartridges CV 270 Plus, CV 300 Plus and CV 470 Plus can easily be disconnected even when not empty, which is a major advantage for carrying and storage.

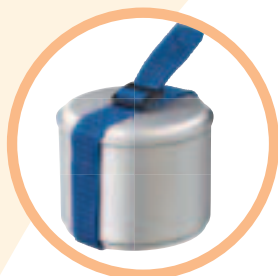


Twister® Plus PZ Kit

This kit features the new Twister® Plus PZ stove in addition to 2 aluminium pots and universal handle. When transporting, the cartridge will fit securely inside the pots for travelling and storage convenience.

- 2 aluminium pots and universal handle
- Heat screen to protect the control knob from heat
- Piezo ignition
- Easy Clic® Plus cartridge connection
- Power: 2900W
- Operates off: Campingaz® Plus cartridges
- Boil time: 3min 45sec
- Runtime: > 1hr on CV 270 Plus
> 1hr 10min on CV 300 Plus
> 2hr on CV 470 Plus
- Weight: 464g

Ref: 204222



Securing strap included

Twister® Plus PZ

High-power, single burner stove with a technical design and instant ignition. It features the easy-to-use Easy Clic® Plus cartridge connection and wide pan supports designed for stability.

- Heat screen to protect the control knob from heat
- Protection case included
- Piezo ignition
- Easy Clic® Plus cartridge connection
- Power: 2900W
- Operates off: Campingaz® Plus cartridges
- Boil time: 3min 45sec
- Runtime: > 1hr on CV 270 Plus
> 1hr 10min on CV 300 Plus
> 2hr on CV 470 Plus
- Weight: 274g

Ref: 204189

Twister® Plus

A compact, single burner with wide pan supports, providing stability for larger based pans. The Easy Clic® Plus cartridge connection offers effortless, one-click connection every time.

- Heat screen to protect the control knob from heat
- Protection case included
- Easy Clic® Plus cartridge connection
- Power: 2900W
- Operates off: Campingaz® Plus cartridges
- Boil time: 3min 45sec
- Runtime: > 1hr on CV 270 Plus
> 1hr 10min on CV 300 Plus
> 2hr on CV 470 Plus
- Weight: 263g

Ref: 204187

Bleuet® Micro Plus

The new Bleuet® Micro Plus has been fine-tuned for improved performance. The inclusion of the Easy Clic® Plus connection ensures that it is exceptionally easy-to-use while maintaining the stove's lightweight and compact credentials.

- Easy Clic® Plus cartridge connection
- Power: 1300W
- Operates off: Campingaz® Plus cartridges
- Boil time: 5min 15sec
- Runtime: > 2hr 30min on CV 270 Plus
> 2hr 40min on CV 300 Plus
> 5hr on CV 470 Plus
- Weight: 180g

Ref: 204184



Valve cartridge lanterns

We offer a complete range of valve cartridge appliances covering most consumer uses. They're equipped with a high security self-sealing valve, so they can be easily and safely disconnected and reconnected whether they're empty or not.



CV270 PLUS

CV300 PLUS

CV470 PLUS



CV270 PLUS

CV300 PLUS

CV470 PLUS



CV270 PLUS

CV300 PLUS

CV470 PLUS

Lumostar® Plus PZ

Featuring an ergonomic design that facilitates easy operation. Instant piezo ignition and a fully detachable head offer faster initial operation and the compact and lightweight textile carry pouch is perfect for transporting and storing.

- Fully detachable head for easy mantle access
- Integrated globe protection guard
- Suspension chain for carrying and hanging
- Carry case included
- Piezo ignition
- Easy Clic® Plus cartridge connection
- Power: 80W
- Operates off: Campingaz® Plus cartridges
- Runtime: > 6hr on CV 270 Plus
> 6hr 20min on CV 300 Plus
> 12hr on CV 470 Plus
- Weight: 379g

Ref: 204195

Lumostar® Plus

Changing a mantle is quick and easy due to the fully detachable head and the Easy Clic® Plus connection provides an extremely reliable, safe, one-click cartridge connection.

- Fully detachable head for easy mantle access
- Integrated globe protection guard
- Suspension wire for carrying and hanging
- Easy Clic® Plus cartridge connection
- Power: 80W
- Operates off: Campingaz® Plus cartridges
- Runtime: > 6hr on CV 270 Plus
> 6hr 20min on CV 300 Plus
> 12hr on CV 470 Plus
- Weight: 247g

Ref: 204191

Lumogaz® Plus

A traditional lantern featuring the new Easy Clic® Plus cartridge connection for safe, reliable, one-click connection every time. It includes an easy-to-operate control knob and the new optimised Campingaz® globe.

- Integrated globe protection guard
- Suspension wire for carrying and hanging
- Easy Clic® Plus cartridge connection
- Power: 80W
- Operates off: Campingaz® Plus cartridges
- Runtime: > 6hr on CV 270 Plus
> 6hr 20min on CV 300 Plus
> 12hr on CV 470 Plus
- Weight: 280g

Ref: 204193



One press of the button and we had light whenever we needed it.

Stoves and lanterns

Stellia® range

A dazzling star, the Stellia® range has a strong design and is brimming with features. Defined by the exceptional power and luminosity, these 2 mantle gas lanterns feature a unique tapered, high heat resistant globe and include the PerfectFlow® system which ensures consistent performance throughout the life of the cartridge.

Stellia® CV

This ultra-bright, 2 mantle lantern with a large globe, features the PerfectFlow® system for consistent power and operates from Campinggaz® valved cartridges.

- PerfectFlow® system for consistent power throughout the life of the cartridge
- Instastart® system for matchless ignition
- Integrated reflector directs light forward
- Insta-Clip® mantle
- Easy Clic® Plus cartridge connection
- Power: 160W
- Operates off: Campinggaz® CV 470 Plus cartridge
- Runtime: > 6hr 10min on Campinggaz® CV 470 Plus
- Weight: 1.5kg

Ref: 203352



Stellia® R

A powerful and bright, 2 mantle lantern that operates off Campinggaz® cylinders, offering a long runtime. The construction is extremely rugged and thanks to the easy-fit Insta-Clip® mantle, changing a mantle is simple.

- PerfectFlow® system for constant power throughout the life of the cylinder
- Instastart® system for matchless ignition
- Integrated reflector directs light forward
- Insta-Clip® mantle
- Power: 150W
- Operates off: Campinggaz® cylinders
- Runtime: > 37hr 55min on Campinggaz® R907
- Weight: 1.3kg

Ref: 203353



Piercable Appliances

These traditional gas appliances feature a cartridge locking system and operate from Campinggaz® C 206 piercable cartridges which are available in over 100 countries across the globe.

Camping 206S

The robust, locking plastic base provides stability and security.

- Power: 1250W
- Operates off: Campinggaz® C 206 piercable cartridges
- Boil time: 7min
- Runtime: > 2hr on Campinggaz® C 206 cartridge
- Weight: 280g

Ref: 40470



Camping 206L

The Camping 206 Lantern is robust with a large base for stability.

- Power: 80W
- Operates off: Campinggaz® C 206 piercable cartridges
- Runtime: > 5hr on Campinggaz® C 206 cartridge
- Weight: 470g

Ref: 204683



Cooking accessories

Ingeniously compact, stackable and light, our cooking accessories offer the choice of non-stick, stainless steel or aluminium, and range from 9-piece to a single pot, frying pan or kettle.



Carry bag included



Camping Cook Set 8 Pieces Non Stick Coated

Ideal for families or larger groups where kit isn't being carried.

- 2 lids Ø 23 and 21cm
- 3 pots Ø 22, 20 and 14cm
- 2 pans Ø 22 and 20cm
- 1 universal handle
- Carry bag included
- Kit packed: H29 x L16cm
- Weight: 1.95kg

Ref: 202024



Trekking Kit 8 Pieces Hard Anodised Aluminium

For increased abrasion and corrosion resistance.
Carry bag included.

- 3 pots Ø 18, 16 and 13cm
- 3 lids Ø 19, 17 and 14cm
- 1 pan Ø 18 cm
- Kit packed: H19 x L13cm
- Weight: 970g

Ref: 202030



Carry bag included



Trekking Kit 5 Pieces Aluminium

Aluminium basic trekking kit, a lightweight and compact piece of kit.

- 2 pots Ø 17cm and 14cm
- 1 pan Ø 18cm
- 1 lid Ø 16cm
- 1 handle
- 1 strap
- Kit packed: H19 x L11cm
- Weight: 570g

Ref: 202031



Camping Fry Pan

Non stick coated frying pan offers easier cleaning. Vinyl coated cool handle grip that folds away for convenient storage.

- Ø 25cm
- Weight: 580g

Ref: 202026



Kettle

Aluminium kettle, the lightest solution for hot water.

- Capacity: 1.3 litre
- Weight: 200g

Ref: 202027

Valve cartridges

Our range of valve cartridges have a high security self-sealing valve giving them all the advantages of being resealable – so they can be disconnected and reconnected even when they're not empty. Ideal for periodic, moderate use.



CG3500

For blowlamps and blowtorches.

- Contains 350g Butane or Butane/Propane mix

Ref: 202094



CG1750

For blowlamps and blowtorches.

- Contains 170g Butane or Butane/Propane mix

Ref: 204562



CP250

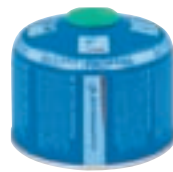
For Bistro® type stoves.

- Contains 250g Isobutane

Ref: 202207

Butane/Propane mix

Recommended for better performance at low temperatures.



CV270 Plus

- Contains 230g Butane/Propane mix

Ref: 203082



CV300 Plus

- Contains 240g Butane/Propane mix

Ref: 202893



CV470 Plus

- Contains 450g Butane/Propane mix

Ref: 203084

Refillable Cylinders

These bigger, heavier cylinders are designed for more prolonged, intensive or regular use. They are fitted with a safety valve and are available in most European countries.



R901

- Contains 0.4kg Butane

Ref: 06199



R904

- Contains 1.8kg Butane

Ref: 06200



R907

- Contains 2.75 kg Butane

Ref: 06201



Exchange your cylinder

With the Campingaz® cylinder exchange system, you can bring your empty cylinder to a Campingaz® product retailer in France, UK, Germany, Italy, Spain (and dozens of other countries), and get a full cylinder for the price of just the refill. It's as simple as that.

Pierceable Cartridges

Pierceable cartridges can't be disconnected once they've been connected to an appliance. They're our most economical and widely available cartridges.

C206

- Contains 190g Butane/Propane mix

Ref: 203530



Regulator Tap Butane 28Mbar 1300g/h

Enables low pressure appliances to operate off Campingaz® refillable cylinders. Excess flow cut-off device. Simply screws onto the cylinder (R901, R904 or R907).

Ref: 202191



Gas Distribution

Gas

Country	R901	R904	R907	C206	CV270+	CV300+	CV470+	CV360	CP250	CG1750	CG3500
ANDORRA (Ad)	●		●	●	●	●	●	●	●	●	●
ANGOLA (Ao)				●	●	●	●				
AUSTRALIA (Au)				●	●	●	●	●		●	●
AUSTRIA (Au)	●	●	●	●	●	●	●	●	●	●	●
BELGIUM (B)	●	●	●	●	●	●	●	●	●	●	●
BENIN (Bj)	●	●	●	●	●	●	●		●		
BOTSWANA (Bw)	●	●	●	●	●	●	●				
BULGARIA (Bg)	●	●	●	●	●	●	●	●			
BURKINA FASO (Bf)	●	●	●	●	●	●	●		●		
BURUNDI (Bi)	●	●	●	●	●	●	●				
CAMEROON (Cm)	●	●	●	●	●	●	●	●	●		
CANADA (Ca)				●	●	●	●	●	●		
CAPE VERDE (Cv)			●	●	●	●	●				
CENTRAL AFRICAN REP (Cf)				●	●	●	●				
CHAD (Td)			●	●	●	●	●	●			
COLOMBIA (Co)				●	●	●	●				
COMORES (Km)				●	●	●	●		●		
CONGO (Cg)				●	●	●	●				
COSTA RICA (Cr)				●	●	●	●				
CROATIA (Hr)			●	●	●	●	●	●	●		
CYPRUS (Cy)			●	●	●	●	●				
CZECH REPUBLIC (Cz)			●	●	●	●	●	●	●		
DENMARK (Dk)		●	●	●	●	●	●	●	●	●	●
DJIBOUTI (Dj)				●	●	●	●	●	●		
DUBAI (Ae)				●	●	●	●	●	●		
EGYPT (Eg)				●	●	●	●		●		
ESTONIA (Ee)				●	●	●	●				
FIJI (Fj)				●	●	●	●				
FINLAND (Fi)				●		●	●	●	●		
FRANCE (Fr)	●	●	●	●	●	●	●	●	●	●	●
FRENCH WEST INDIES	●	●	●	●	●	●	●	●			
FRENCH POLYNESIA (Pf)	●	●	●	●	●	●	●				
GABON (Ga)		●		●							
GAMBIA (Gm)				●	●	●	●	●	●		
GERMANY (De)	●	●	●	●	●	●	●	●	●	●	●
GIBRALTAR (Gi)	●	●	●	●	●	●	●	●	●	●	●
GREAT BRITAIN (GB)	●	●	●	●	●	●	●		●	●	●
GREECE (Gr)				●	●	●	●	●	●		
GUADELOUPE (Gp)				●	●	●	●				
GUINEA (Gn)				●		●	●				
HAÏTI (Ht)			●	●		●	●				
HONG KONG (Hk)				●	●	●	●	●			
HUNGARY (Hu)			●	●	●	●	●	●	●		
ICELAND (Is)				●			●	●	●		
INDONESIA (Id)			●	●							
IRELAND (Ie)			●	●	●	●		●			
ITALY (It)	●	●	●	●	●	●	●	●	●	●	●
ISRAEL (Is)			●	●	●	●	●	●	●		
IVORY COAST (Ci)				●	●	●	●	●	●		
JAPAN (Jp)				●	●	●	●	●			
JORDAN (Jo)				●							
KAZAKHSTAN (Kz)				●	●	●	●				
KENYA (Ke)		●	●	●	●	●	●	●			
KUWAIT (Kw)				●	●	●	●	●	●		
LATVIA (Lv)				●	●	●	●	●			
LEBANON (Lb)				●	●	●	●	●	●		

Country	R901	R904	R907	C206	CV270+	CV300+	CV470+	CV360	CP250	CG1750	CG3500
LESOTHO (Ls)				●	●	●	●				
LIBERIA (Lr)				●							
LITHUANIA (Lt)				●	●	●	●				
MADAGASCAR (Mg)				●	●	●	●		●		
MALAWI (Mw)				●	●	●	●				
MALAYSIA (My)	●	●	●	●	●	●	●	●			
MALI (Ml)				●	●	●	●			●	
MALTA (Mt)	●	●	●	●	●	●	●			●	
MARTINIQUE (Mq)			●	●	●	●	●				
MAURITANIA (Mr)				●	●	●	●			●	
MAURITIUS (Mu)	●	●	●	●		●	●			●	
MAYOTTE (Yt)			●	●	●	●	●	●	●		
MOROCCO (Ma)			●	●	●	●	●		●		
MOZAMBIQUE (Mz)				●	●	●	●				
NAMIBIA (Na)				●	●	●	●	●			
NEPAL (Np)				●			●				
NEW CALEDONIA (Nc)	●	●	●	●	●	●	●	●			
NEW ZEALAND (Nz)				●	●	●	●	●			
NIGER (Ne)				●							
NIGERIA (Ng)				●							
NORWAY (No)				●	●	●	●	●	●		
PHILIPPINES (Ph)			●	●	●	●	●	●	●		
POLAND (Pl)				●	●	●	●	●	●		
PORTUGAL (Pt)	●	●	●	●	●	●	●	●	●	●	●
REUNION (Re)	●	●	●	●	●	●	●	●	●		
ROMANIA (Ro)				●	●	●	●		●	●	●
RUSSIA (Ru)				●	●	●	●				
RWANDA (Rw)				●	●	●					
SAUDI ARABIA (Sa)				●	●	●	●	●	●		
SENEGAL (Sn)				●	●	●	●	●			
SERBIA & MONTENEGRO (Cs)				●	●	●	●				
SEYCHELLES (Sc)				●	●	●			●		
SIERRA LEONE (Sl)				●							
SINGAPORE (Sg)	●	●	●	●	●	●	●	●	●	●	●
SLOVAKIA (Sk)			●	●	●	●	●	●			
SLOVENIA (Sl)				●	●	●	●	●			
SOUTH AFRICA (Za)				●	●	●	●	●			
SOUTH KOREA (Kr)				●	●	●					
SPAIN (Sp)	●		●	●	●	●	●	●	●	●	●
SRI LANKA (Lk)	●	●	●	●							
SWAZILAND (Sz)				●	●	●	●	●			
SWEDEN (Se)				●	●	●	●	●	●	●	●
SWITZERLAND (Ch)	●	●	●	●	●	●	●	●	●	●	●
TAIWAN (Tw)	●	●	●	●	●	●	●	●			
THAILAND (Th)				●			●				
THE NETHERLANDS (Nl)	●	●	●	●	●	●	●	●	●	●	●
TOGO (Tg)				●	●	●	●		●		
TUNISIA (Tn)			●	●							
TURKEY (Tr)				●	●	●	●		●		
UGANDA (Ug)			●	●							
UKRAINE (Ua)			●	●	●	●	●		●		
USA (Us)				●	●	●	●	●	●		
VENEZUELA (Ve)				●	●	●	●	●			
YEMEN (Ye)				●	●	●	●				
ZAMBIA (Zm)				●	●	●	●	●			
ZIMBABWE (Zw)				●	●	●	●	●			

Home from home

Airbeds

In traditional Campingaz® blue, our airbeds are soft to the touch but tough and resilient, and can be used indoors or outdoors for a comfortable night's sleep.



There's nothing quite like sleeping outdoors

Fold the double bed over and clip it together as an extremely comfortable double-height single mattress



Also for use as two singles



Zip it together into a double bed



Easy-to-access storage space under the pillow



Convertible Quickbed™ Airbed

An amazingly versatile solution for camping or for guests at home.

- Snap 'N' Stay™ feature for attaching together
- Dimensions: 2x L188 x W74 x H19cm
- Weight: 3.3kg

Ref: 202529

Smart Quickbed™ Airbed

An airbed with an easy-to-access storage space hidden under the pillow, available in single or double size.

- Dimensions:
 - L188 x W137 x H19cm (Double)
 - L188 x W74 x H19cm (Single)
- Carry bag included
- Weight: 3.9kg (Double), 2kg (Single)

Ref: 200974 Double

Ref: 200973 Single



All of our airbeds have an internal coil structure, ensuring firmness and comfort all night long



Every airbed is inflated prior to leaving the factory to check for leaks

Range features

- Airtight® system: Double Lock™ valve locks in air two ways
- Durable PVC
- Internal coil structure
- PVC thickness: Single: 0.33mm Double: 0.35mm
- Flocked PVC on the top: Single: 0.53mm Double: 0.55mm
- Repair kit included



Quickbed™ Airbed

A flocked inflatable mattress, fitted with the Airtight® system for a leak-free and more resilient bed.

- Dimensions:
L188 x W137 x H19cm (Double)
L188 x W74 x H19cm (Single)
- Weight: 2.9kg (Double); 1.6kg (Single)

Ref: 69191 Double
Ref: 69192 Single



Be-Leaf™ Airbed

This dual colour range is Phthalate-free, making it kinder to the environment and kinder to you.

- Phthalate free
- Dimensions:
L188 x W137 x H19cm (Double)
L188 x W74 x H19cm (Single)
- Weight: 2.9kg (Double); 1.6kg (Single)

Ref: 205077 Double
Ref: 205076 Single



4D Quickpump™ Air pump

A battery powered pump for quick inflation when you're away from an external power supply – for example on a camping trip.

- Cordless pump
- Operates on 4 D/R20 batteries (not included)
- Runtime: 30 minutes (with new alkaline batteries)
- Airflow: 340 litres per minute
- Head pressure: 27 mbar
- Weight: 360g

Ref: 203144



Dual action Hand pump

This clever design creates airflow on both the upward and downward pump movement – inflating and deflating a whole range of inflatable products, from beds to boats.

- Flexible hose included
- Includes Double Lock™ valve, pinch valve and Boston valve adapters
- Weight: 1.05kg

Ref: 204473



Home from home

Chemical toilets

Here's an ideal solution if you're camping, travelling or spending time on a boat: chemical toilets are practical, lightweight and hygienic.

NEW



Portable Flush Toilet Large

Our most advanced toilet, with taller proportions and a scullped seat for greater comfort, and convenient large tanks.

- Side handles for easy transport
- Garden hose hookup for easy cleaning
- Grey colour for sterile aspect
- Fresh water tank capacity: 18L
- Waste water tank capacity: 20L
- Materials: polypropylene (no metal parts)
- Dimensions: H41 x L50 x W45cm
- Weight: 5.3kg

Ref: 205238

Portable Flush Toilet Small

Our most advanced toilet, with taller proportions and a scullped seat for greater comfort, and convenient large tanks.

- Side handles for easy transport
- Garden hose hookup for easy cleaning
- Grey colour for sterile aspect
- Fresh water tank capacity: 11L
- Waste water tank capacity: 13L
- Materials: polypropylene (no metal parts)
- Dimensions: H30 x L50 x W45cm
- Weight: 4.5kg

Ref: 205239

Instablu[®] Standard

Developed for use in the waste tank. It prevents odour build-up and decomposes faeces.

- Contents: Non ionic tensides, cationic tensides, colouring agents, odorous substance
- Free of aldehydes, carbolic acids and chlorine
- Child proof cap
- Measurement scale
- Capacity: 2.5L and 5L

Ref: 203041



Instablu[®] Extra 1L

Instablu[®] Extra 1L additive is a concentrated formula of the Instablu[®] Standard additive. It has a density of 1g/ml.

- Same technical characteristics as the Instablu[®] Standard
- Capacity: 1L

Ref: 203040



Eurosoft

4 rolls of toilet paper designed for chemical toilets – made from water-soluble, wadded cellulose.

- 200 sheets
- 2-ply soft tissue
- Dimensions: 10x12.6cm

Ref: 32225



Instagreen[™]

Powerful, biodegradable cleaner for use in the fresh water tank or directly in the bowl. It also prevents the build-up of dirt marks and hard water deposits in the bowl.

- Density: 1g/ml
- Contents: Non ionic tensides, cationic tensides, organic acids, colouring agents, odorous substances
- Measurement scale
- Child lock system
- Concentrated formula

Ref: 203042



Coolers

Traditional electric coolers

Coolers that plug into your car or into mains electricity via a transformer, keeping contents 18°C below the ambient temperature. They're also insulated so they stay cool for hours once unplugged.



Holds: 6x 1.5L bottles upright



Hatch to the Hyper Cool compartment for rapid and intense cooling - cools to 23°C below the ambient temperature



Sliding separator acts as a shelf when cooler is upright

Powerbox® 30L Deluxe

A cooler that operates when you're travelling and on site, with unique features such as the Hyper Cool compartment which offers rapid and intense cooling. You can also use the cooler upright with the sliding separator as a tray.

- Brushless motor, for a longer lifetime and quieter operation
- Large central opening
- Warm and cold switch
- Integrated battery control system prevents car battery from draining
- Outside top service
- Cable storage compartment
- Cable length: 2.75m
- Dimensions: L51.5 x H43 x W34cm
- Operates off: 12Vdc (or mains, adaptor sold separately)
- Cools to: 23°C below the ambient temperature (Hyper Cool compartment) or 20°C below the ambient temperature (entire box)
- Capacity: 30L
- Weight: 6.4kg

Ref: 202017

Euro Transformer 230Vac/12Vdc

Plug-in and your thermoelectric cooler will run on 230Vac mains supply.

- Output power: 13Vdc x 5A = 65W

Ref: 203442



Powerbox range features

- Operates off 12Vdc car cigarette lighter
- Warm and cold functions
- Cooling performance: Down to 18°C below ambient temperature
- Cable length: 2.75m
- Can be used in 230Vac mode with an 230Vac/12Vdc transformer (sold separately)



Powerbox® 36L Classic

Large capacity cool box which can be used vertically or horizontally.

- Holds 3x 1.5L bottles vertically
- 1 plastic grid shelf
- Cools to: 18°C below ambient temperature
- Capacity: 36L
- Weight: 5.8kg

Ref: 68669



Powerbox® 28L Deluxe

Slightly smaller capacity than the Powerbox 30L with a coolbox lid that can be used as an extra table.

- Handy drinks container in lid
- Additional lightweight lid
- Brushless motor and battery control
- Cable storage compartment
- Integrated battery control system prevents car battery from draining
- Detachable and reversible plug
- Cooling performance: 16°C below ambient temperature
- Heats to: 65°C
- Capacity: 28L
- Weight: 4.3kg

Ref: 204110



Powerbox® 24L Classic

Cooling to 16°C below the ambient temperature, it is great to keep drinks and food cool.

- Cable storage compartment
- Operates off: 12Vdc (or mains, adaptor sold separately)
- Cools to: 16°C below the ambient temperature
- Capacity: 24L
- Weight: 3.5kg

Ref: 068679



Coolers

Smart coolers

We've carefully designed our Smart coolers for taking in the car. They have a space-saving design that fits neatly on a seat, and our One-handed lid system offers quick access to food and drink.



Electric Smart coolers. Keep your drinks cool for as long as you like – just keep it plugged into your car.



Smart Cooler Electric 12Vdc/230Vac 25L

This convenient cooler with the unique One-Handed opening system has an integrated transformer enabling you to operate it from the car battery or mains.

- One-Handed system for easy access
- EPS graphite foam insulation in lid and main body
- Cable storage compartment with locking system
- Operates off: 12Vdc and 230Vac (integrated transformer)
- Cools to: 16°C below the ambient temperature
- Weight: 3.7kg
- Capacity: 25L

Ref: 204590



Smart Cooler Electric 12Vdc 20L

A convenient size, this thermoelectric cooler is perfect for car journeys or at the campsite.

- One-Handed system for easy access
- Cable storage compartment
- Operates off: 12Vdc (or via mains, adaptor sold separately)
- Cools to: 16°C below the ambient temperature
- Weight: 2.9kg
- Capacity: 20L

Ref: 203183



Smart Cooler 22L

Easy to carry, the Smart Cooler 22L also features the One-Handed system for quick and easy cooler access.

- One-Handed system for easy access
- Cooling performance: 19hr with Freez'Pack® units (sold separately)
- Weight: 1.9kg
- Capacity: 22L

Ref: 203168



Sliding lid enhances the airtight seal and gives a good sense of security

One-handed operation

for quick and easy access.



Icetime® coolers

Lightweight and easy to transport, Icetime® coolers offer effective insulation performance thanks to the injected foam insulation that fills every gap. Each model features an ergonomic handle for carrying comfort and a safety locking lid system.



Icetime® 30L

Large capacity cooler, perfect for the family.

- Lid locking handle
- Injected foam insulation
- Lid can be used as a tray
- Cooling performance: 24hr with Freez'Pack® units (sold separately)
- Weight: 2.8kg
- Capacity: 30L

Ref: 39403



Icetime® 13L

Effective performance with a compact size.

- Lid locking handle
- Injected foam insulation
- Lid can be used as a tray
- Cooling performance: 17hr with Freez'Pack® units (sold separately)
- Weight: 1.9kg
- Capacity: 13L

Ref: 39401



Freez'Pack® M5, M10, M20, M30

Ideal for keeping drinks, food or medicines cool for longer in your passive cooler. They are dishwasher proof and reusable

Ref: 29406 M10 x2
Ref: 09378 M20
Ref: 21628 M30

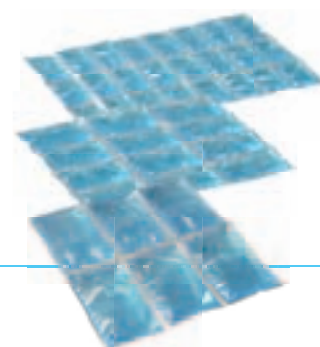
Our Freez'Pack® units can be used in every cool box or soft cooler to keep food and drinks cooler for longer. They're available in a range of sizes and shapes, and the bigger they are, the longer they stay cool.



Freez'Pack® 6 cans

Specifically designed to snugly fit 6 drinks cans for ultimate cooling. It is reusable and dishwasher proof.

Ref: 64270



Flexi Freez'Pack® S, M, L

Maximise the use of internal space in your cooler. The Freez'Packs® stay flexible even when frozen, and wrap like a blanket around the contents of your freezer. Also suitable for first aid or physiotherapy.

- Large - For use in coolers larger than 18L
Size: 24 x 37.5 x 1.8 cm
- Medium - For use in coolers 11 – 18 L
Size: 19.5 x 24 x 1.8 cm
- Small - For use in coolers smaller than 11L
Size: 14.5 x 16 x 1.8 cm

Ref: 203479 Large
Ref: 203478 Medium
Ref: 203477 Small