



2012



90TH ANNIVERSARY





Although Dickies has manufactured hardwearing workwear since 1922, it is undeniably a company of the twenty-first century.

Employing the latest developments in fabric technology and manufacturing techniques, Dickies high performance workwear is suited for even the harshest working environments.

Quality workwear in both traditional and modern styles that delivers performance, comfort and protection at an affordable price.

WEAR WITH PURPOSE™

Designed and produced by The Lighthouse Agency, Bath
Photography by Viewpoint Photography, Bath

Thank you to the following for their assistance and site access for the location photography:

Bristol City Council • @Bristol • Fleet Air Arm, Fleet • MJ Church, Marshfield Tarmac, Halecombe quarry, Leigh-on-Mendip • Hengrove Park - Carillion plc
Whitchurch Farm, Bristol • Manor Farm, Ston Easton



Contents

| | |
|------------------------|-----|
| Dickies 22 | 2 |
| Farm and Ranch | 12 |
| Base Layer | 16 |
| Mid Layer | 17 |
| Outer Layer | 23 |
| Interactive System | 37 |
| Eisenhower | 45 |
| Painters Workwear | 54 |
| Industry260 | 56 |
| Industry300 | 58 |
| Grafter Duo Tone | 62 |
| Coveralls | 67 |
| Redhawk Workwear | 73 |
| Combats | 79 |
| Trousers | 80 |
| Dickies Embroidery | 84 |
| Shirts | 85 |
| T-shirts | 90 |
| Hoodies | 95 |
| Ladies Workwear | 99 |
| High Visibility | 105 |
| GO/RT | 114 |
| Flame Retardant | 119 |
| Footwear | 127 |
| Wellingtons | 159 |
| Socks | 162 |
| Gloves | 166 |
| Hats | 172 |
| Accessories | 175 |
| PPE | 176 |
| Industrial Launderable | 184 |
| Sizing Guide | 185 |
| Directory | 186 |

Buyers Guide

Quality, comfort and function is a given. For help with ordering, follow our simple product classification for a more informed buying decision







Modern working

Dichties 22

Dickies 22

A premium range of stylish garments created for and inspired by the modern worker.

Featuring quality materials and modern design details, the Dickies 22 range sets new standards in workwear.





1



1 Dickies 22 | **Gasket Hoody**

- Padded zip through hooded sweat
- Faux fur lined hood
- Knitted rib side panelling and cuffs
- Two lower pockets

Fabric Outer 65% polyester, 35% cotton, 350gsm
 Lining 100% polyester
 Hood Lining 70 % acrylic, 30% polyester, 560gsm
 Padding 100% polyester, 100gsm

Sizes S, M, L, XL, XXL
Colour Black
Code DT3000



2



2 Dickies 22 | **Forge T-shirt**

- Heavy weight T-shirt
- Graphic print logo

Fabric 100% cotton, 230gsm
Sizes M, L, XL
Colour Blue
Code DT6001



3



3 Dickies 22 | **Ergo Trouser**

- Ergonomic designed twill work trouser
- Cordura knee pad pockets and hem guard
- Multi section front pockets
- Side access tool pocket

Fabric 100% cotton twill, 335gsm, 500D Cordura
Sizes Leg R 32", Waist 30 - 40", Leg T 34", Waist 32 - 40"
Colour Blue, Grey
Code DT1000



Blue



Grey

Grey

1



1 Dickies 22 | Oxide Beanie

- Chunky rib knitted beanie
- Wool mix for warmth
- Rubber print logo

Fabric 70% acrylic, 30% wool

Sizes One Size

Colour Grey

Code DT8001

2



2 Dickies 22 | Alloy Beanie

- Rubber print logo

Fabric 100% acrylic

Sizes One Size

Colour Black

Code DT8000



3 Dickies 22 | Anvil Polo Shirt

- New fit two tone polo shirt
- Three button contrast placket

Fabric 100% cotton pique, 200gsm

Sizes S, M, L, XL, XXL, XXXL

Colour Black, Blue

Code DT2000

3



4



4 Dickies 22 | Torsion Baseball Cap

- Six panels
- Embroidered Dickies branding
- Velcro adjuster fastening

Fabric 100% brushed cotton, 200gsm

Sizes One Size

Colour Black, Grey

Code DT8002



DICKIES 22



1 Dickies 22 | Tundra Gilet

- Fleece lined gilet
- Thick padding
- Two lower zippered pockets
- Nylon rip stop outer fabric
- Contrast blue lining

Fabric 100% nylon rip stop outer, 100gsm
Lining 100% polyester, 200gsm
Padding 100% polyester, 400gsm

Sizes M, L, XL, XXL

Colour Black

Code DT7000



2 Dickies 22 | Klaxon Shirt

- Improved fit retro check shirt
- 2 patch pockets with button through flaps
- Contrast detailing
- Garment washed

Fabric 100% brushed cotton flannel, 180gsm

Sizes S, M, L, XL, XXL

Colour Blue

Code DT5000



3 Boston Jean

- New Fit
- 5 Pocket western styling

Fabric 100% cotton washed denim, 440gsm

Sizes Leg S 30", Leg R 32", Leg T 34",
Waist 30" - 44"

Colour Denim Blue

Code WD1000



3



1 Dickies 22 | Torque Hoody

- Heavy weight fabric with embroidery
- Fleece brushing inside
- Kangaroo front pocket

Fabric 80% cotton, 30% polyester, 350gsm

Sizes M, L, XL, XXL

Colour Grey

Code DT3001

1



2



2 Dickies 22 | Galvanise T-shirt

- Heavy weight T-shirt
- Graphic print logo

Fabric 100% cotton, 230gsm

Sizes M, L, XL

Colour Red

Code DT6000



3



3 Dickies 22 | Contrast T-shirt

- Set in sleeves
- Contrast stitching
- Side vents

Fabric 100% combed cotton, 230gsm

Sizes S, M, L, XL, XXL

Colour Black

Code DT281000

WHILST STOCKS LAST



4



4 Dickies 22 | Warrington Shirt

- 2 patch pockets with button through flaps
- Slimmer fit
- Tail hem
- Western styling

Fabric 100% cotton, 120gsm

Sizes S, M, L, XL, XXL

Colour Grey

Code DT299000

WHILST STOCKS LAST

Farm and Ranch



Black



Brown Duck



1 Duck Sherpa Lined Hooded Jacket

- Warm Sherpa Lining
- Two inside pockets & phone pocket
- Adjustable tab cuffs with ribknit storm cuffs

Fabric 8.5 oz Sanded Duck 100% cotton, washed

Sizes M, L, XL, XXL

Colour Black, Brown Duck

Code TJ350

2



2 Padded Gilet

- Two lower pockets
- One internal map and phone pocket
- Grey piping

Fabric Shell 100% Nylon with PU clear coating
Brushed Tricot upper and polyester taffeta lower lining

Sizes M, L, XL, XXL

Colour Black

Code BW17000

3



3 Flannel Check Shirt

- Button fastened adjustable cuffs
- Full placket with button front
- Tail hem

Fabric 80% cotton, 13% viscose and 7% polyester, 180gsm

Sizes M, L, XL, XXL

Colour Red Check

Code SH82000



4 Weatherford Trousers

- Relaxed fit
- Utility loop and dual tools pockets
- Heavy duty brass zipper

Fabric 12 oz Sanded Duck 100% cotton, washed

Sizes Leg R 32", Waist 30" - 42"
Leg T 34", Waist 32" - 38"

Colour Black, Brown Duck

Code DU336



Black



Brown Duck

4







Flexible clothing



Base layer

Made using bamboo yarn, these undergarments are extremely soft and breathable and provide excellent warmth in the cold.

The highly breathable quality of the fabric means the wearer stays cool even when carrying out the most strenuous of work activities.

TENCEL® is an all-natural fibre. Its controlled nano-fibril structure moves moisture away from the body, keeping you cool when the temperature is hot and warm when it is cold.

Bamboo Fibre Natural anti-bacterial, Anti-ultraviolet, Rich softness, Wicking and comfortable.



1 Base Layer Vest

Breathable and extremely soft, the base layer vest has eco-friendly fibres incorporated in the structure of the fabric.

- Long sleeve vest
- Crew neck
- Ribbed cuffs
- Contrast stitching

Fabric 65% bamboo, 30% Tencel, 5% Spandex, 180gsm

Sizes XS, S, M, L, XL, XXL

Colour Black

Code TH50100



1



2



2 Long Johns

A modern variation of a traditional undergarment, employing the latest fabric technology.

- Elasticated waist and ribbed ankles
- Vented fly
- Contrast stitching

Fabric 65% bamboo, 30% Tencel, 5% Spandex, 180gsm

Sizes XS, S, M, L, XL, XXL

Colour Black

Code TH50000





Mid layer

A selection of softshell jackets and fleeces designed to be worn separately or with other garments from Dickies' Interactive System.

The extra dimension of flexibility is added to Dickies' trademark features of quality construction and durability in this selection of softshell jackets and fleeces.

BASE & MID LAYER



3



3 Microfleece Jacket

- Fully lined
- Drawcord adjustable hem
- Two zippered hand warmer pockets
- Zipped front
- Internal chest pockets

Fabric 100% polyester anti-pill microfleece, 320gsm.
Lining 100% polyester peached microfibre

Sizes M, L, XL, XXL

Colour Navy

Code JW84400

- Features** Adjustable cuffs, Zipped pockets, Contrast stitching, Zipped openings
- Properties** Lightweight, Breathable, Water Resistant, Anti-pill fabric
- Results** Flexibility, Comfort, Warmth, Protection



1

1



2



Black



Navy

1 Microfleece Pullover

A lightweight fleece pullover made from an anti-pill fabric, this is the perfect garment for keeping you warm and comfortable during the winter.

- Lightweight microfleece pullover
- 1/4 length zip opening to the front
- Contrast stitching

Fabric 100% polyester anti-pill microfleece, 200gsm
Sizes S, M, L, XL, XXL
Colour Black, Navy
Code JW83500



2 Padded Fleece Jacket

A substantial fleece fully lined and quilted to provide the wearer superior comfort and warmth.

- Fully lined and quilted
- Internal zipped embroidery access
- Two zippered hand warmer pockets
- Set-in sleeve
- Elasticated cuffs
- Draw cord adjustable hem
- Zipped front

Fabric 100% polyester anti-pill microfleece, 320gsm
Sizes S, M, L, XL, XXL
Colour Black, Dark Moss, Navy
Code JW81700



Black



Dark Moss



Navy

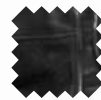
3



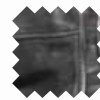
3 Seville Fleece

- Set-in sleeves
- Zipped front
- Elasticated cuffs
- Drawcord adjustable hem
- Two zippered hand warmer pockets

Fabric 100% polyester anti-pill polar fleece, 360gsm
Sizes S, M, L, XL, XXL
Colour Black, Bottle Green, Charcoal Grey, Navy
Code JW82015



Black

Bottle
GreenCharcoal
Grey

Navy



1 Argan Fleece

- Heavy weight sherpa outer
- 3 zipped jet pockets
- Poly-oxford trims

Fabric Fleece sherpa, 560gsm
Polyoxford trims

Sizes M, L, XL, XXL, XXXL

Colour Grey

Code JW7000





2 Orwell Softshell Jacket

- Waterproof fabric 8000mm/ Breathable 800mvp
- 3 zipped front pockets
- Internal mobile phone pocket
- Internal mesh lower pocket
- Adjustable elasticated draw cord to hem
- Adjustable cuffs
- Reflective piping

Fabric 96% polyester, 4% Spandex with TPU and fleece lamination, 330gsm

Sizes M, L, XL, XXL

Colour Grey

Code JW88800



3 Foxton Ladies Jacket

- Waterproof fabric 8000mm/ Breathable 1000mvp
- 2 zipped front pockets
- Adjustable elasticated draw cord to hem
- Adjustable cuffs

Fabric 94% polyester, 6% Spandex bonded with microfleece, 320gsm

Sizes S, M, L, XL, XXL

Colour Black, Navy

Code JW80000



Black



Navy



Jackets, coats and waterproofs perform equally well when worn independently or in conjunction with one of the mid-layer products from this versatile clothing system.

Garments offering various degrees of weather protection make up the third component of Dickies' Layering System.

- | | |
|-------------------|--|
| Features | Stitched and tape welded seams, Waterproof zips, Storm flaps |
| Properties | Waterproof, Water Resistant, Windproof, Breathable |
| Results | Flexibility, Comfort, Warmth, Protection |



Melbourn Jacket

- Waterproof fabric 10000mm/ Breathable 1000mvp
- 3 zipped front pockets
- Adjustable elasticated draw cord to hem and hood
- Adjustable cuffs
- Tail hem

Fabric 94% polyester, 6% Spandex
100D with TPU

Sizes S, M, L, XL, XXL

Colour Black

Code JW30000

1



MADE IN UK

1 Polden Jacket

- Diamond quilted design
- Detachable wind guard
- Two front pockets
- Back panel vents
- Zip front with button down storm flap

Fabric 100% polyester outer
Lining 100% polyester

Sizes S, M, L, XL

Colour Black

Code JW7001

2



MADE IN UK

2 Brendon Gilet

- Diamond quilted design
- Padded for warmth
- Two zipped front pockets
- Double collar detail
- Button down double placket storm flap

Fabric 6oz waterproof antique waxed cotton
Lining 100% cotton
Padding 100% polyester

Sizes M, L, XL, XXL

Colour Black

Code WX7000

3



3 Arndale Jacket

- Waterproof 2000mm/Breathable 2000mvp
- Interactive with the JW84950 Softshell Jacket, JW84420i Tampa & BW11800 Townsend
- Taped Seams
- Adjustable elasticated draw cord to hem and hood
- Inside mobile and MP3 pockets
- 4 zipped front pockets
- Knitted internal cuffs
- Camouflage print

Fabric 100% polyester with PU coating

Sizes S, M, L, XL, XXL

Colour Grey Camouflage

Code JW90000



4 Hudson Jacket

- 3 in 1 Jacket, can be worn as jacket, with fleece, without fleece or fleece on its own
- Front zip with storm flap
- Two lower zipped pockets
- Internal zip pocket
- Adjustable cuffs

Fabric 100% polyester microfibre with PU coating, 2000MM W/P.
100% polyester micro fleece, 280gsm

Sizes S, M, L, XL, XXL

Colour Navy, Black

Code JW7002



4

1



1 Camouflage Wax Jacket

A robust and heavy duty wax jacket with a warm quilted lining, which has been specifically designed for the demands of the countryside.

- Two way plastic zip with brass puller
- Detachable hood with studs
- Two patch pockets with strap feature to hold lower pocket flaps open

Fabric Outer weatherproof waxed cotton fabric, 400gsm
Inner fabric polyester quilting with a polyester lining, 85gsm

Sizes M, L, XL, XXL

Colour Camouflage

Code WX11140



2 Camouflage Wax Trousers

Tough, weatherproof, wax trousers perfect for working outdoors in wet weather.

- Elasticated waist
- Side adjusters with metal slide buckles

Fabric Weatherproof waxed cotton, 400gsm with a nylon lining

Sizes M, L, XL

Colour Camouflage

Code WX16140

2



3 Outland Bodywarmer

- Washed Camouflage print
- 2 front pockets with flaps
- Mobile phone pocket/ pen pocket
- Velcro fastened storm flap
- Dropped hem

Fabric 65% polyester, 35% cotton camouflage print, 240gsm

Sizes S, M, L, XL, XXL

Colour Camouflage

Code BW11400

3





OUTER LAYER

1

2



1 Utility Vest

- Lower bellowed pocket with side handwarmer access and velcro fastened flap
- Zip access pocket behind lower patch pockets
- Right chest pocket with side zip access
- Upper patch pocket with velcro fastened flap
- External mobile phone pocket
- Internal chest pocket

Fabric 100% Rip-Stop nylon Taslan with PU water repellent coating.
Lining polyester anti-pill polarfleece, 280gsm

Sizes M, L, XL, XXL

Colour Navy, Olive Green

Code BW11700



Navy



Olive Green



2 Professional Combat Bodywarmer

- Zip front with velcro fastened storm flap
- Mobile phone pocket with velcro fastening
- Pen pocket
- Zipped chest pocket
- Two zipped pockets
- Zipped embroidery access
- Tail hem
- Yarn dyed check lining
- Two lower double entry velcro fastened pockets
- Inside patch pocket with velcro fastening

Fabric Outer fabric 65% polyester, 35% cotton twill with water repellent finish, 166gsm. Inner lining 100% brushed cotton yarn dyed check

Sizes S, M, L, XL, XXL (XXXL Navy & Olive only)

Colour Black, Navy, Olive Green

Code BW11025



Black



Navy



Olive Green



3 Outland Bodywarmer

- Washed Camouflage print
- 2 front pockets with flaps
- Mobile phone pocket/ pen pocket
- Velcro fastened storm flap
- Dropped hem

Fabric 65% polyester, 35% cotton camouflage print, 240gsm

Sizes S, M, L, XL, XXL

Colour Camouflage

Code BW11400



4

4 Cambridge Jacket

- Zipped front with velcro storm flap
- Two zipped jet pockets
- Concealed hood with adjuster
- Side elasticated waistband
- Tab adjustable cuffs
- Zipped embroidery access
- Internal mobile phone pocket
- Internal zipped patch pocket
- All seams stitched and tape welded
- Outer fabric 3000mm waterproof and 3000mvp breathable

Fabric Nylon Taslan, with PU milky breathable and waterproof coating, with tape welded seams. Lining 100% polyester microfleece.

Sizes S, M, L, XL, XXL

Colour Black, Navy

Code JW23700



5

5 Lewis Jacket

- Raglan sleeves
- Zipped front
- Elasticated waist
- Two zipped outer pockets
- Adjustable elasticated cuffs
- Zip embroidery access
- One internal pocket

Fabric 100% polyester with a waterproof PVC coating, seams tape welded. Lining 100% polyester anti-pill polar fleece

Sizes S, M, L, XL, XXL, XXXL, XXXXL

Colour Black, Navy

Code JW23500





1



1 Waterproof Padded Coverall

- Waterproof to 2000mm
- Velcro adjustable cuffs
- Drawcord adjustable hood
- Back elasticated waist
- Heavy duty zip front under velcro fastened storm flap
- Multi-detailed chest pockets
- Two back pockets including rule pocket
- Velcro adjustable hems
- Reflective tape trim detail
- Zip leg storm flap
- Tape welded seams

Fabric Polyester Oxford with PU transparent coating.
Quilted lining 100% polyester, 160gsm

Sizes M, L, XL, XXL

Colour Black, Green, Navy

Code WP15000



1



Black



Green



Navy

2



2 Mission Kids Coverall

- Waterproof to 2000mm
- Taped seams
- Reflective tape trim
- Front zip with storm flap
- Adjustable cuffs

Fabric 210D Polyoxford, 160gsm
Lining 100% quilted polyester taffeta, 110gsm

Sizes Age 5-6, 7-8, 9-10, 11-12, 13-14

Colour Green

Code WP7003

1



2



1 Westfield Wax Jacket

- Two way plastic zip with brass puller
- Five stud storm flap
- Two large external patch pockets with dual studded flaps
- Internal pocket
- External hand warmer pockets
- Detachable hood with studs
- Internal corduroy collar

Fabric Heavyweight 100% cotton with wax treatment, 400gsm. Lining 100% brushed cotton

Sizes XS, S, M, L, XL, XXL

Colour Bottle Green

Code WX11102



2 Westfield Wax Trousers

- Weatherproof construction
- Nylon web side adjusters with metal slide buckles
- Elasticated waist

Fabric Heavyweight 100% cotton with wax treatment, 400gsm. Lining 100% polyester

Sizes M, L, XL

Colour Bottle Green

Code WX15100



3 Westfield Wax Leggings

- Weatherproof adjustable stud leggings
- Four brass studs to external seams
- Nylon taped edges
- Brass stud fastened nylon web loop to fix leggings over trouser belts

Fabric Heavyweight 100% cotton with wax treatment, 400gsm. Lining 100% polyester

Sizes One size only

Colour Bottle Green

Code WX14100

3





4



4 Blake Jacket

- Waterproof fabric 2000mm/ Breathable 3000mvp
- Taped seams
- 3 zipped front pockets
- Adjustable elasticated draw cord to hem and hood
- Knitted inner cuffs
- Inside zipped pocket and mobile pocket
- Lightly padded

Fabric 100% nylon 230T with PU coating

Sizes S, M, L, XL, XXL

Colour Black

Code JW96000



1



Black



Green



2



Black



Green



Navy



Yellow



1 Exmoor Suit

Jacket

- Waterproof fabric 2000mm/ Breathable 2000mvp
- Zipped fastened front jacket
- Reflective chest piping
- Two lower pockets
- Concealed hood in collar

Trouser

- Waterproof fabric 2000mm/ Breathable 2000mvp
- Elasticated Trousers
- Two access pockets
- Side seam access vents at hem
- Two zipped fastened back pockets

Fabric 100% nylon ripstop with PU coating

Sizes S, M, L, XL, XXL

Colour Black, Green

Suit

Code WP70000

Trousers

Code WP71000



2 Vermont Waterproof Suit

Jacket

- Zip fastened front with studded stormflap
- Elasticated cuffs
- Tail hem with drawcord adjustment
- Two jet pockets
- Mesh buggy lining
- Raglan sleeves
- Concealed hood in collar

Trouser

- Full elasticated waist
- Side access
- Stud adjustable ankle width

Fabric 100% polyester PVC waterproof fabric with taped seams

Sizes S, M, L, XL, XXL

Colour Black, Green, Navy, Yellow

Suit

Code WP10050

Trousers are also available separately in Green and Navy only, in sizes S, M, L, XL, XXL

Trousers

Code WP10000

**3****3 Raintite Jacket**

- Waterproof fabric 5000mm
- Two way zip under full studded double storm flap
- Two pockets with flaps
- Adjustable cuffs
- Drawcord adjustable hem
- Internal zip pocket

Fabric 100% polyester double knitted, 200gsm**Sizes** S, M, L, XL, XXL, XXXL**Colour** Green, Navy**Code** WP50000

Green



Navy

**4****5 Childrens' Vermont Waterproof Suit****Jacket**

- Zip fastened front with studded stormflap
- Elasticated cuffs
- Tail hem with drawcord adjustment
- Two jet pockets
- Reflective tape detailing
- Raglan sleeves
- Concealed hood in collar

Trouser

- Full elasticated waist.
- Side pocket access.

Fabric 100% polyester PVC waterproof fabric with taped seams**Sizes** 3-4 yrs, 5-6 yrs, 7-8 yrs, 9-10 yrs, 11-12 yrs**Colour** Black, Green, Navy**Code** WP11000**5****4 Raintite Trouser**

- Waterproof fabric 5000mm
- Elasticated waist
- Side pocket access
- Adjustable studs at hem

Fabric 100% polyester double knitted, 200gsm**Sizes** S, M, L, XL, XXL, XXXL**Colour** Green, Navy**Code** WP51000

Green



Navy



Black



Green



Navy





Interactive system



INTERACTIVE RANGE

DESIGNED WITH FLEXIBILITY IN MIND



Mid-layer fleece

Your environment changes all the time, so you need clothing that is both flexible and appropriate. The Dickies Interactive range has been specifically designed to allow you to react quickly to changes, ensuring your workwear is fit for purpose.

Mid Layers

- Lightweight
- Breathable
- Water resistant
- High protection



Interaction with top layer

Interactive garments can be worn alone or together with other Interactive clothing. Our Interactive Mid-Layer fleeces can be quickly combined with an Interactive Outer-Layer.

Top Layers

- Waterproof zips
- Windproof
- Waterproof to up 10000mm
- Stitched and taped seams



Mid and top layer

A water resistant and breathable Mid-Layer fleece from the Interactive range, worn with an Interactive jacket gives you an extra dimension of protection. Dickies' trademark features of durability and quality come together with adaptability to create a range of clothing that will surpass all your expectations.



Top layer

In warm and wet conditions, simply unzip the Mid-Layer to leave a Top-Layer that gives great protection from the elements. Most of our Interactive garments use breathable materials, meaning you get both comfort and protection.



INTERACTIVE SYSTEM



1



1 Aspen Lightweight Jacket

- Waterproof to 10000mm and breathable to 5000mvp
- Interactive with the JW84950 Softshell Jacket, JW84420i Tampa & BW11800 Townsend
- All seams stitched and taped
- Elasticated drawcord to hem
- Two lower pockets & chest pocket with waterproof zip
- Tail hem
- Internal mobile phone pocket & Internal zipped pocket
- Zip-off hood
- Internal zip to allow embroidery access

Fabric 100% nylon taslan pearl ripstop fabric with PU milky coating. Lining 100% polyester tricot, 210T polyester

Sizes S, M, L, XL, XXL

Colour Grey, Navy

Code JW86000



Grey



Navy

2



2 Cabot Waterproof Jacket

- Waterproof and breathable to 10000mm and 3000mvp
- Interactive with the JW84950 Softshell Jacket, JW84420i Tampa & BW11800 Townsend
- 3 ply TPU membrane with mesh
- All seams stitched and taped
- Elasticated drawcord to hem
- Two lower pockets with waterproof zips
- Chest pocket with waterproof zip
- Drawstring hood

Fabric Polyester ripstop, TPU, laminated with mesh, 160gsm

Sizes S, M, L, XL, XXL

Colour Black

Code JW86500

3



3 Softshell Jacket

Part of the Dickies Interactive System, this Softshell jacket is water resistant and breathable, making it versatile enough to cope with all weathers.

- Water resistant and breathable to 8000mm and 1000mvp
- Interactive with the JW86000 Aspen & JW86500 Cabot
- Two lower zipped pockets
- Side elastic drawcord adjustment

Fabric 94% polyester, 6% Spandex bonded with microfleece, 320gsm

Sizes S, M, L, XL, XXL

Colour Black, Navy

Code JW84950



Black



Navy

4



4 Tampa Interactive Fleece

- Interactive with the JW86000 Aspen & JW86500 Cabot
- Two lower zipped pockets
- One upper chest pocket with waterproof zip fastening
- Interactive Zipped front
- Elasticated drawcord to hem
- Knitted cuff
- Tail hem

Fabric 100% polyester micro polarfleece with mesh, 5000mm, 3000mvp, 340gsm

Sizes S, M, L, XL, XXL

Colour Grey, Navy, Olive

Code JW84420i



Grey



Navy



Olive



1



1 Arndale Jacket

- Waterproof 2000mm/Breathable 2000mvp
- Interactive with the JW84950 Softshell Jacket, JW84420i Tampa & BW11800 Townsend
- Taped Seams
- Adjustable elasticated draw cord to hem and hood
- Inside mobile and MP3 pockets
- 4 zipped front pockets
- Knitted internal cuffs
- Camouflage print

Fabric 100% polyester with PU coating

Sizes S, M, L, XL, XXL

Colour Grey Camouflage

Code JW90000



2 Townsend Interactive Bodywarmer

- Interactive front zip access & interactive front zip
- Two lower zipped pockets
- One left breast pocket
- Reinforced Poly Oxford shoulders
- Dickies branded taped internal collar
- Interactive with the JW86000 Aspen, JW86500 Cabot & JW90000 Arndale Jackets

Fabric 96F Microfleece, 280gsm, 2 Sides brushed, 1 Side anti-pilling

Sizes S, M, L, XL, XXL

Colour Black

Code BW11800



2



INTERACTIVE SYSTEM







Eisenhower







Eisenhower

NANotex™ Fabric

A revolutionary technology to enhance fabrics on a molecular level. The result - a fabric that resists spills and repels stains without sacrificing comfort.



This technology combines the best stain fighters into one fabric finish. It offers excellent repellency against both water and oil based spills, and ground-in stains are washed away easily during normal laundering.

ARMORTEX® DuPont™ KEVLAR®

Armortex® uses a nylon or polyester based fabric reinforced with Kevlar® brand fibre. Armortex is water and dirt repellent and is resistant to tears and abrasions offering strength and protection at the same time as freedom of movement.

ARMORTEX® is a registered trademark of Nam Liong.
KEVLAR® is a registered trademark of DuPont.

CORDURA®

A high performance fabric extremely resistant to tearing, scuffing and abrasion.

CORDURA® is a registered trademark of INVISTA for durable fabrics.





designed to work just as hard as you do



- 1 **Cordura® Hammer Loops**
- 2 **Removable Multi Pockets**
- 3 **Kevlar® Kneepad Pouches**
- 4 **Cordura® Hemguards**

Kevlar® and Cordura® are used to provide exceptional strength in these contemporary work trousers.



Eisenhower Pro Multi-pocket Trouser

- YKK metal zip fastening with metal button waistband attachment
- Kevlar® external kneepad pouches
- Cordura® hemguards
- Removable multi-pockets
- Cordura® hammer loops
- Cargo pocket with multi-sections and stud fastening flap
- Rear mobile phone pocket with flap

Fabric 60% polyester, 40% cotton treated fabric, 320gsm
Sizes Waist 30" - 42", Leg R 32", T 34"
Colour Black
Code EH30000



Dickies Knee Pads SA66
page 176

CORDURA®

ARMORTEX®



DuPont™
KEVLAR®

NANotex™
Fabric





1

**1 Eisenhower Pilot Jacket**

- Waterproof fabric 1500mm
- Multi-pockets
- Mobile Phone pocket
- Velcro fastened storm flap
- Hem side elastication
- Elasticated cuff with velcro adjustment

Fabric 100% polyester Oxford 600D
Sizes M, L, XL, XXL
Colour Black
Code EH60000

2

**2 Eisenhower Pro Pilot Jacket**

- Waterproof fabric 3000mm/ Breathable 3000mvp
- Multi-pockets
- Mobile phone pocket
- Stud fastened storm flap
- Detachable sleeves, can be worn as a bodywarmer
- Detachable hood
- Elasticated adjustable cuffs
- Elasticated hem
- Internal zip pocket
- Tricot lining
- Oxford Polyester on sleeves and shoulders

Fabric 100% nylon doobby with PU coating
Sizes M, L, XL, XXL
Colour Black
Code EH70050

1



1 Eisenhower Bonded Fleece

- Zip front with velcro fastened storm flap
- Mobile phone pocket with tab opening flap
- One upper zipped chest pocket with reflective trim detailing
- Two lower zipped pockets with reflective trim detailing
- Key fob
- Polyester Oxford panels

Fabric 100% polyester Micro Polarfleece, with mesh lamination, 320gsm. 8000mm, 800mvp, offering water resistant properties.

Sizes M, L, XL, XXL

Colour Black, Navy/Black

Code EH63700



Black



Navy/Black

2



2 Eisenhower Waterproof Jacket

Waterproof Quilted Parka Jacket with stitched and taped seams.

- Waterproof fabric 3000mm/ Breathable 3000mvp
- Fully lined and quilted for warmth
- Contrast panels to shoulders and sleeves
- Two-way plastic YKK zip
- Double storm placket with concealed stud closure
- Concealed zip off lined hood
- Two lower pockets with magnetic closure flaps
- Lower pockets with zip access to sides
- Concealed pocket above lower left pocket with waterproof zip access
- Concealed pocket to right chest with waterproof zip access
- Mobile phone pocket
- Internal pocket with zip access
- Internal access point with zip for logoing

Fabric 100% nylon dobby with PU coating, 100% polyester Tricot lining, 120gsm, 100% polyester 190T taffeta lining 100% polyester quilting, 180gsm

Sizes M, L, XL, XXL

Colour Black

Code EH70000

3



3 Eisenhower Fleece Pullover

- Non-pilling outer fleece fabric
- Plastic YKK zip to the front
- Knitted cuffs and hem
- Side handwarmer pockets
- Contrast panels down each sleeve

Fabric 100% polyester fleece bonded with sherpa lining, 540gsm 100% nylon Taslan contrast panels

Sizes M, L, XL, XXL, XXXL

Colour Black

Code EH89000



4



4 Eisenhower Multi-pocket Trousers

- Two back patch pockets, one with stud fastening
- Hammer loop
- Zip fastened with metal button waistband attachment
- Velcro adjustment on waist
- Cordura® external knee pad pouches and cordura hem
- Multi-pocket detailing with tool pouches
- Rule pocket
- Cargo pocket with multi-sections and stud fastened flap

Fabric 65% polyester, 35% cotton canvas, 300gsm

Sizes Leg S 30", R 32", T 34", Waist 30" - 46"

Colour Black, Grey, Khaki, Navy, Olive Green

Code EH26800

CORDURA®



Black

Grey

Khaki

Navy

Olive Green

Painters' workwear



Painters' Trousers

- Two front pockets and one back pocket
- Belt loops
- Zip fly front
- Knee pad pouches to take a knee pad

Fabric 100% cotton, 245gsm
Sizes Leg R 32", Waist 30" - 44"
Colour White
Code WD824



Painters' Bib and Brace

- Deep front pouch pocket
- Angled chest pocket
- One back patch pocket
- Rule pocket
- Adjustable straps with snap fasteners
- Knee pad pouches to take a knee pad

Fabric 100% cotton, 245gsm
Sizes S, M, L, XL, XXL
Colour White
Code WD650



PAINTERS' WORKWEAR



● DUSTRY
IN 260
Dickies

An extension of the successful INDUSTRY300 assortment.

INDUSTRY 260 garments have a lighter fabric weight of 260 g/m², with distinctive reflective seams offering additional safety in the workplace.

With a perfect fit, wide size range, side-elastication, free of outer metal or plastic, suitable for embroidery and transfer logos. Can be washed (up to 60°C) and tumble dried. Features the same fabric as our REDHAWK range offering new combinations to select from.



Grey/Black

White/Grey



1



2

**1 Industry260 | Jacket**

- Two side pockets
- One chest pocket with flap and side entry zip
- Waist adjusters
- High visibility piping
- Cuff adjusters
- Nylon zips with velcro fastened storm flap

Fabric 65% polyester, 35% cotton, 260gsm**Sizes** S, M, L, XL, XXL**Colour** Grey/Black, White/Grey, Navy**Code** IN7001**2 Industry260 | Bib and Brace**

- Adjustable waist
- External knee pad pockets
- High visibility piping
- Two side pockets
- Two back pockets
- Cargo and Mobile Phone Pocket

Fabric 65% polyester, 35% cotton, 260gsm**Sizes** Short 24-29, Reg 44-64, Tall 90-110**Colour** Grey/Black, White/Grey, Navy**Code** IN4001**3 Industry260 | Trouser**

- Elasticated waist
- External knee pad pockets
- High visibility piping
- Two side pockets
- Two back pockets
- Cargo and Mobile Phone Pocket

Fabric 65% polyester, 35% cotton, 260gsm**Sizes** Short 24-29, Reg 44-64, Tall 90-110**Colour** Grey/Black, White/Grey, Navy**Code** IN1001

3

Navy





Black/Black



● DUSTRY IN3000

Dickies

The qualities that have made Dickies® a worldwide brand are highlighted in the Dickies® Industry range which has been especially developed alongside our Distributors and their customers for the rigorous demands of today's work force. The Industry range is manufactured using Oeko-Tex® accredited weaving, dyeing and finishing processes to minimise environmental impact.

INDUSTRY 300



Industry300 | Jacket

- Stormflap with covered buttons
- 2 chest pockets
- 2 side pockets
- Key holder in left pocket
- Mobile phone pocket
- Action back
- YKK branded zipper
- 40 bartacks

Fabric 65% polyester, 35% cotton, 300 gsm

Sizes S, M, L, XL, XXL, XXXL

Colour Black/Black, Green/Black, Grey/Black, Khaki/Black, Navy/Royal, Royal/Navy

Code IN30010



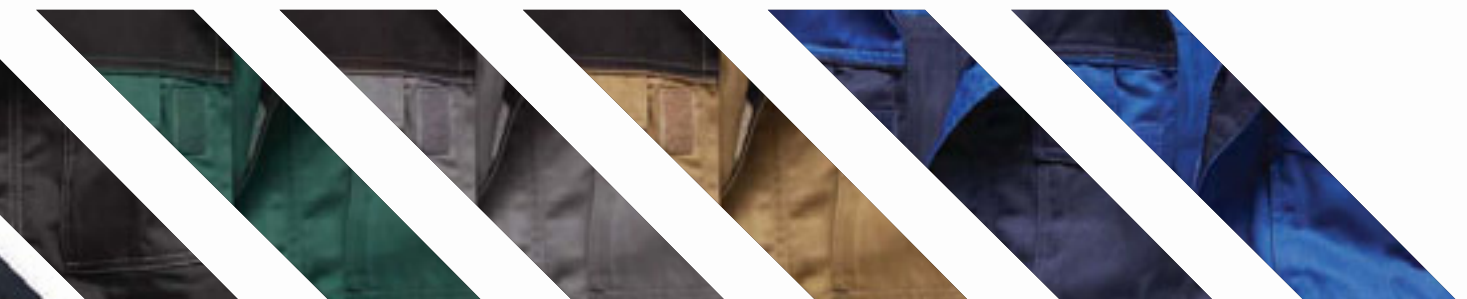
Green/Black

Grey/Black

Khaki/Black

Navy/Royal

Royal/Navy





1 Industry300 | Trousers

- Elasticated waist
- Hammer loop
- External kneepad pouches
- 2 sidepockets
- 2 back pockets with bellow
- 2 cargo pockets, with mobile phone pocket to the right
- Wide belt loops
- Double ruler pocket
- YKK branded zipper
- 70 bartacks

Fabric 65% polyester, 35% cotton, 300 gsm

Sizes Short 24-29, Reg 44-64, Tall 90-110

Colour Black/Black, Green/Black, Grey/Black, Khaki/Black, Navy/Royal, Royal/Navy

Code IN30030

1



2



Navy/Royal

Black/Black



2 Industry300 | Bib & Brace

- Elasticated waist and back
- Hammer loop
- External kneepad pouches
- 2 side pockets
- 2 back pockets with bellow
- 2 cargo pockets, with mobile phone pocket to the right
- Adjustable waist (jeans button)
- Double ruler pocket
- YKK branded zipper
- 70 bartacks

Fabric 65% polyester, 35% cotton, 300 gsm

Sizes Short 24-29, Reg 44-64, Tall 90-110

Colour Black/Black, Green/Black, Grey/Black, Khaki/Black, Royal/Navy, Navy/Royal

Code IN30040



Black/Black



Green/Black



Grey/Black



Khaki/Black



Navy/Royal



Royal/Navy


3

4

3 Industry300 | Vest

- Stormflap with covered buttons
- 2 chest pockets
- 2 side pockets
- Key holder in left pocket
- Mobile phone pocket
- Action back
- YKK branded zipper
- 34 bartacks

Fabric 65% polyester, 35% cotton, 300 gsm
Sizes S, M, L, XL, XXL, XXXL
Colour Black/Black, Green/Black, Grey/Black, Khaki/Black, Royal/Navy, Navy/Royal
Code IN30020



Black/Black



Green/Black



Grey/Black



Khaki/Black



Navy/Royal



Royal/Navy


4 Industry300 | Shorts

- Elasticated waist
- 2 side pockets
- 2 back pockets with flaps
- 2 cargo pockets with mobile phone pocket on right
- YKK branded zipper
- 50 bartacks

Fabric 65% polyester, 35% cotton, 300gsm
Sizes 44-64
Colour Black/Black, Green/Black, Grey/Black
Code IN30050



Black/Black



Green/Black



Grey/Black

SIZE CHART - INDUSTRY/EISENHOWER PRO PAINTERS WORKWEAR

| Regular Fit | 40 | 42 | 44 | 46 | 48 | 50 | 52 | 54 | 56 | 58 | 60 | 62 | 64 |
|---------------|-----|-----|-----|-----|-----|-----|-----|-----|-----|-----|-----|-----|-----|
| Waist Measure | 26" | 28" | 30" | 32" | 33" | 34" | 36" | 38" | 40" | 42" | 44" | 46" | 48" |
| Inside Leg | 30" | 30" | 30" | 31" | 31" | 31" | 32" | 32" | 33" | 33" | 33" | 34" | 34" |

Sizes 40 & 42 available in Black only.

| Tall Fit | 90 | 94 | 98 | 102 | 106 | 110 |
|---------------|-----|-----|-----|-----|-----|-----|
| Waist Measure | 30" | 32" | 33" | 34" | 36" | 38" |
| Inside Leg | 32" | 33" | 34" | 34" | 35" | 35" |

| Short Fit | 24 | 25 | 26 | 27 | 28 | 29 |
|---------------|-----|-----|-----|-----|-----|-----|
| Waist Measure | 34" | 36" | 38" | 40" | 42" | 44" |
| Inside Leg | 29" | 30" | 30" | 31" | 31" | 31" |





CORDURA®

A high performance fabric extremely resistant to tearing, scuffing and abrasion.

CORDURA® is a registered trademark of INVISTA for durable fabrics.

GRAFTER DUO TONE



GDT 210 Trousers

- Lightweight Super Durable Fabric
- YKK zip front
- Triple stitch detail using Coats thread
- Hammer Loop
- Rule pocket
- Cargo pocket with mobile phone pocket
- Cordura® Knee Pad pockets
- Side elastication

Fabric 100% cotton, 210gsm,
100% nylon Cordura 500D x 500D, 230gsm

Sizes Leg R 32", Waist 28" - 46"
Leg T 34", Waist 30" - 46"

Colour Grey/Black, Khaki/Black, Navy/Black

Code WD4975



Grey/Black



Khaki/Black



Navy/Black

CORDURA®

Lightweight, Super Durable ULTRA TOUGH

Grafter Duo Tone

◀ GDT 290 Jacket - Khaki/Black WD4910
GDT 210 Trousers - Khaki/Black WD4975

1



Grey /Black



Khaki /Black



Navy/Black



1 GDT 210 Shorts

- Lightweight Super Durable Fabric
- YKK zip front
- Triple stitch detail using Coats thread
- Hammer Loop
- Rule pocket
- Cargo pocket with mobile phone pocket
- Side elastication

Fabric 100% cotton, 210gsm
Sizes Waist 28" - 46"
Colour Grey/Black, Khaki/Black, Navy/Black
Code WD4979

2



2 Meuse Jacket

- Waterproof fabric 6000mm/ Breathability 3000mvp
- 4 front pockets plus mobile phone pocket
- Waterproof zip on chest pocket
- Velcro fastened storm flap
- Inner Fleece Collar
- Fold away hood
- Lightly padded with diamond quilting
- One internal pocket
- Can also be worn with the Industry range

Fabric 94% polyester, 6% Spandex, 240gsm
Sizes S, M, L, XL, XXL
Colour Grey/Black, Khaki/Black
Code WD4900



Grey/Black



Khaki/Black

3



3 GDT 210 Jacket

- Lightweight Super Durable Fabric
- YKK zip front under velcro fastened storm flap
- Triple stitch detail using Coats thread
- Two chest pockets with velcro fastened flaps
- Action Back
- Mobile phone pocket on sleeve
- Velcro adjustable waistband

Fabric 100% cotton, 210gsm
Sizes S, M, L, XL, XXL
Colour Grey/Black
Code WD4970



4



Black/Black



Grey/Black



Khaki/Black



Navy/Black



Olive Green/Black



4 GDT 290 Jacket

- YKK zip front under velcro fastened storm flap
- Triple stitch detail using Coats thread throughout
- Two chest pockets with velcro fastened flaps
- Action back
- Mobile phone pocket on sleeve
- Velcro adjustable waistband

Fabric 100% cotton, 290gsm

Sizes S, M, L, XL, XXL

Colour Black/Black, Grey/Black, Khaki/Black, Navy/Black, Olive Green/Black

Code WD4910



5 GDT 290 Trousers

- YKK zip front
- Triple stitch detail using Coats thread throughout
- Numerous pockets
- Cargo pocket with mobile phone pocket
- Hammer loop
- Rule pocket
- Cordura® knee pad pouches to take a knee pad
- Side elastication
- Large belt loops that will take a Clip2 attachment for fastening a tool pocket (available separately)

Fabric 100% cotton, 290gsm, 100% nylon Cordura 500D x 1000D

Sizes Leg S 30", Waist 30" - 40" (not available in Navy/Black)

Leg R 32", Waist 28" - 46"

Leg T 34", Waist 30" - 46"

Colour Black/Black, Grey/Black, Khaki/Black, Navy/Black, Olive Green/Black

Code WD4930

CORDURA



Black/Black



Grey/Black



Khaki/Black



Navy/Black



Olive Green/Black



5





Coveralls





1 Short Sleeved Cotton Coverall

- Lightweight short sleeve coverall
- Concealed two way nylon zip
- Two front pockets with velcro
- Action back
- Side elastication with tunnel waist band

Fabric 100% cotton, 170gsm
Sizes S, M, L, XL, XXL
Colour Royal, Red, Navy, Khaki
Code WD2299



2 Cotton Coverall

- Hi Viz taping
- Two slanted chest pockets with nylon zips on front, two back pockets
- Tool pocket, rule pocket and hammer loop
- Action back
- Knee pad pouches

Fabric 100% cotton, 260gsm
Sizes S, M, L, XL, XXL
Colour Royal, Red, Navy, Orange
Code WD2279



3 Lightweight Cotton Coverall

- Lightweight with hi viz taping
- Two slanted chest pockets with nylon zips on front, two back pockets
- Tool pocket, rule pocket and hammer loop
- Action back
- Knee pad pouches

Fabric 100% cotton, 170gsm
Sizes S, M, L, XL, XXL
Colour Royal, Red, Navy, Khaki, Orange
Code WD2279LW

Navy

Khaki

Red

Lincoln





4

5



Royal



Orange



Teflon® is a registered trademark of Dupont

- Provides maximum water and stain repellency
- Does not affect the breathability of the garment
- Is durable to washing and dry cleaning
- Is CFC free and dermatologically tested



4 Dickies Deluxe Coverall

- Reinforced stress points
- Concealed heavy duty two way YKK brass zip
- Reinforced turnback cuffs with stud closure
- Hammer loop on left leg
- Action back
- Side elasticsation with tunnel waistband and studded neck closure
- Two zipped chest pockets
- Two mitred back pockets, one zipped
- Pencil pocket
- Side swing pockets, lined with sail cloth and side access

Fabric 65% polyester, 35% cotton, 280gsm with Teflon coating
Sizes Leg R 30", T 32", S, M, L, XL, XXL
Colour Lincoln, Navy, Red, Royal
Code WD4879R/WD4879T



5 Dickies Lined Coverall

- Reinforced stress points
- Concealed heavy duty two way YKK brass zip
- Stud adjustment cuffs
- Hammer loop
- Action back allowing easy body movement
- Side elasticsation with tunnel waistband
- Side swing pockets, lined with sail cloth and side access
- Warm quilted lining for cold weather comfort
- Two back pockets, one zipped

Fabric 65% polyester, 35% cotton, 260gsm.
 Lining 100% nylon, padding polyester, 140gsm
Sizes Leg 32", S, M, L, XL, XXL, XXXL
Colour Navy, Orange, Red, Royal
Code WD2360R



Teflon® is a registered trademark of Dupont

Navy

Orange

Red

Royal





EZ-ON Coverall

- Two full length plastic two way zips
- Stud adjustable sleeves
- Velcro ankle fastening

Fabric 65% polyester, 35% cotton, 260gsm

Sizes S, M, L, XL, XXL

Colour Bottle Green, Grey

Code WD6000



COVERALLS





1



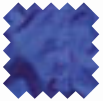
2



Lincoln



Navy



Royal



White



Lincoln



Navy



Royal



1 Redhawk Economy Stud Front Coverall

- Concealed stud front
- Two swing pockets with side access
- Pen pocket on sleeve
- Two chest pockets with studded flaps
- One back patch pocket
- One rule pocket
- Full back elasticated waistband

Fabric 65% polyester, 35% cotton, 200gsm

Sizes Leg R 30", T 32", S, M, L, XL, XXL

Colour Lincoln, Navy, Royal, White

Code WD4819R/WD4819T (Navy only)



2 Redhawk Stud Front Coverall

- Two chest pockets with concealed stud fastening
- Pen pocket on sleeve
- Side elastication for a comfortable fit
- Tunnel waistband
- Two large pockets with side access
- One back pocket
- Rule pocket on right leg
- Knee pad pouches

Fabric 65% polyester, 35% cotton, 260gsm

Sizes Leg R 30", T 32", Chest 36" - 54"

Colour Lincoln, Navy, Royal

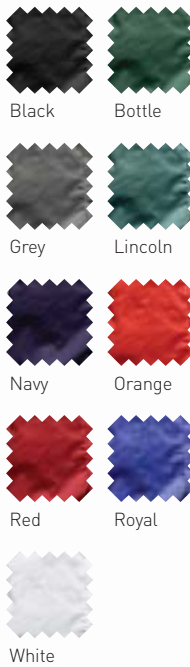
Code WD4829





1

Royal



1 Redhawk Zip Front Coverall

- Two way metal zip front with studded over placket
- Two zipped chest pockets
- Tool pocket and rule pocket
- Two swing pockets with side access
- Double pencil pocket on sleeve
- Full back elastication and an action back
- Two large back patch pockets, one zipped
- Knee pad pouches

Fabric 65% polyester, 35% cotton, 260gsm

Sizes Leg R 30", T 32" Chest 36" - 54" (All colours),
R - chest 36" - 58" (Navy only), T - chest 36" - 60"
(Navy and Royal only)

Colour Black, Bottle Green, Grey, Lincoln, Navy, Orange,
Red, Royal, White

Code WD4839



2



3



2 Redhawk Bib and Brace

- Two front opening hip pockets with side access
- Bib pocket with zip fastening
- Back pocket
- Rule pocket
- YKK zip fly front

Fabric 65% polyester, 35% cotton, 260gsm

Sizes Leg 31", M, L, XL, XXL

Colour Navy

Code WD600



3 Redhawk Junior Zip Front Coverall

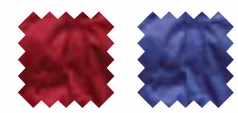
- Full back elasticsation
- Action back
- Two way metal zip front with studded over placket
- Tunnel waistband
- Two large back pockets, one zipped
- Rule pocket on right leg
- Two swing pockets with side access
- Pencil pocket on left sleeve
- Two zipped chest pockets

Fabric 65% polyester, 35% cotton, 260gsm

Sizes Chest 24" - 34"

Colour Red, Royal

Code WD4839J



Red

Royal



1

Black



2

Grey



Black



Grey



Navy



1 Redhawk Super Work Trousers

- Key fob on waistband
- Button and YKK zip fastening
- Cargo style pocket with button fastening
- Two front pockets
- Two rear pockets with buttoned flap closure
- Hammer loop on right leg
- Rule pocket on left leg
- External knee pad pouches
- Triple stitched seam detailing

Fabric 65% polyester, 35% cotton, 260gsm
Sizes Leg S 30", R 32", T 34", Waist 28" - 48"
Colour Black, Grey, Navy
Code WD884



2 Redhawk Men's Action Trousers

- Button and zip fastening
- Zipped hand pockets
- One zipped thigh pocket
- Two zipped back pockets
- External knee pad pouches

Fabric 65% polyester, 35% cotton, 260gsm
Sizes Leg S 30", R 32", T 34", Waist 30" - 48"
Colour Black, Grey, Navy
Code WD814



Black



Grey



Navy



Royal

3



3 Redhawk Jacket

- Action back
- YKK zip front with over placket, studded top and bottom
- Side elastics
- Two studded chest pockets, one with inside mobile phone pocket
- One sleeve pocket
- Two hand warmer pockets

Fabric 65% polyester, 35% cotton, 260gsm

Sizes S, M, L, XL, XXL

Colour Black, Bottle Green, Grey, Lincoln, Navy, Orange, Red, Royal

Code WD954



Red

4



4 Redhawk Trousers

- Two front pockets
- One buttoned back pocket
- One sided rule pocket
- Sewn-in front crease
- YKK zip front

Fabric 65% polyester, 35% cotton, 260gsm

Sizes Leg R 32", Waist 30" - 48" (All colours).
Leg T 34", Waist 28" - 48" (All colours).
Waist 50" - 52" (Available in Black, Navy, Red and Royal).
Leg U 37", Waist 30" - 48" (Available in Navy only)

Colour Black, Bottle Green, Grey, Lincoln, Navy, Orange, Red, Royal

Code WD864R / WD864T / WD864U



5 Redhawk Cargo Shorts

- Stud front closure to waistband
- Key fob on waistband
- Two side pockets
- Cargo style pockets on each leg with velcro fastened flaps, one with mobile phone pocket
- Two rear pockets with flaps and velcro closure

Fabric 65% polyester, 35% cotton, 260gsm

Sizes Waist 30" - 46"

Colour Black, Navy

Code WD834



Navy



1



Navy



Royal



White



1 Redhawk Food Industry Warehouse Coat

- Food industry style
- Concealed press stud front
- Internal chest and hip pockets
- Side access slits

Fabric 65% polyester, 35% cotton, 260gsm

Sizes S, M, L, XL, XXL

Colour Navy, Royal, White

Code WD201

2



2 Redhawk Warehouse Coat

- Press stud fastening
- Two hip pockets
- One chest pocket with pencil division
- Side access slits in side seam
- Plain back

Fabric 65% polyester, 35% cotton, 260gsm

Sizes XS*, S, M, L, XL, XXL
[*XS in White only]

Colour Lincoln, Navy, Royal, White

Code WD200



Lincoln



Navy



Royal



White

3



3 Redhawk Tabard

- One front pouch pocket
- Side stud adjustment
- V-neck

Fabric 65% polyester, 35% cotton, 200gsm

Sizes S, M, L, XL, XXL* [*XXL in Navy only]

Colour Navy, Royal

Code WD250



Navy



Royal

**4****4 Combat Trousers**

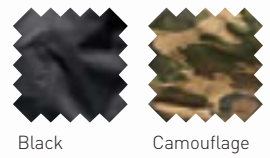
- Multi-purpose work trousers
- Two front pockets with button flap
- Two large cargo pockets with button flap
- Two back pockets with button flap
- Side adjusters to allow waist size adjustments
- Wide belt loops and reinforced seat
- Brass zip fly front with plastic button closure
- Bottom loading knee pad pouches
- Drawcord to hem
- Camouflage trousers stonewashed

Fabric 65% polyester, 35% cotton, 230gsm
Sizes Leg 32", Waist 28" - 44"
Colour Black, Camouflage
Code TR14000 (Black), TR14025 (Camouflage)

**5 Combat Shorts**

- Multi-purpose shorts for work
- Brass zip fly front with plastic button closure
- Two large cargo pockets with velcro fastened flap
- Two front pockets
- Two back pockets with velcro flap
- Wide belt loops
- Garment stonewashed

Fabric 65% polyester, 35% cotton, 230gsm
Sizes Waist 30" - 40"
Colour Camouflage
Code TR14050

5



Green

1



Navy

2



1 Reaper Trousers

- Nylon zip and button and bar fastening
- Wide belt loops
- Shirt gripper waistband
- Two side pockets
- One inset back pocket with flap and button fastening
- Supplied on trouser hanger

Fabric 65% polyester, 35% cotton, 260gsm

Sizes Leg S 30", Waist 30" - 42"
Leg R 32", T 34", Waist 30" - 48"

Colour Green, Navy

Code TR41500



Green



Navy



2 Winter Reaper Trousers

- Nylon zip and button and bar fastening
- Wide belt loops
- Shirt gripper waistband
- Two side pockets
- One inset back pocket with flap and button fastening
- Supplied on trouser hanger
- Brushed polycotton lining for extra warmth

Fabric 65% polyester, 35% cotton, 260gsm

Sizes Leg R 32", Waist 30" - 48"

Colour Green, Navy

Code TR41501



Green



Navy





3



4



3 Dickies Stonewashed Work Jeans

- Metal zip fly front with metal button closure
- Riveted at stress points

Fabric 100% cotton Indigo denim, 13.75oz

Sizes Leg S 30", R 32", T 34",
Waist 30" - 44"

Colour Blue

Code WD1693



4 Boston Jean

- New Fit
- 5 Pocket western styling

Fabric 100% cotton washed denim,
440gsm

Sizes Leg S 30", Leg R 32",
Leg T 34", Waist 30" - 44"

Colour Denim Blue

Code WD1000







Shirts and hoodies



DICKIES EMBROIDERY

Dickies embroidery and printing service can add logos or specified text to the vast majority of our product range. All you need to do is to contact us with your details and allow us to do the rest.

We will require;

- Your company name and/or account number and contact details.
- The logo details with preferably a jpg or bmp image file if possible.
- Any specific pantone shades that you wish us to adhere to.
- The product and colours that you are thinking of embellishing.
- The position of the logo(s) e.g. Left breast area, back etc
- An indication of the quantity you are thinking of ordering.

We will normally be able to respond back to you with a price and lead-time within three working days. Once you have confirmed approval, we can then arrange for the garments to be embellished.

Our direct contact details are:

Tel: 01761 419 419
Fax: 01761 402 142
Email: ukquotes@dickies.com



SH64250
(Short sleeve)SH64350
(Short sleeve)**1**SH64200
(Long sleeve)**2**SH64300
(Long sleeve)**1 Men's Oxford Weave Shirt**

- One chest pocket
- Button down collar

Fabric 70% cotton, 30% polyester Oxford, 135gsm
Sizes 15", 15.5", 16", 16.5", 17", 17.5", 18", 18.5", 19", 19.5", 20"
 (Sizes 18.5" - 20" available in Blue and White only)
Colour Blue, Navy, Silver Grey, White
Code SH64200 (Long sleeve)
 SH64250 (Short sleeve)

**2 Ladies' Oxford Weave Shirt**

- Round hem
- Inverted pleat in back for ease of movement

Fabric 70% cotton, 30% polyester Oxford, 135gsm
Sizes 8, 10, 12, 14, 16, 18, 20, 22, 24
Colour Blue, White
Code SH64300 (Long sleeve)
 SH64350 (Short sleeve)



1



Red

2



Teal



Green



Black



Blue



White



1 Portland Shirt

- Padded for warmth
- Polar fleece for comfort

Fabric 100% polyester polar fleece, 220gsm.
Lining 100% polyester.
Padding 100% polyester, 120gsm

Sizes S, M, L, XL, XXL

Colour Red, Green, Black

Code SH5000



2 Chorley Shirt

- Short sleeve
- Yarn dyed check
- One chest pocket
- Full placket

Fabric 60% cotton, 40% polyester, 100gsm

Sizes M, L, XL, XXL

Colour Blue, Teal, White

Code SH5001



SHIRTS



1



3



**2****1 Meadow Shirt**

- Classic Styling long sleeve shirt
 - One chest button down pocket
- Fabric** 65% polyester, 35% cotton yarn dyed check, 120gsm
- Sizes** M, L, XL, XXL, XXXL
- Colour** Navy, Red
- Code** SH81460

**2 Chaser Shirt**

- Classic styling long sleeve shirt
 - One chest pocket with button down flap
 - Full placket
- Fabric** 65% polyester, 35% cotton yarn dyed check, 120gsm
- Sizes** M, L, XL, XXL, XXXL
- Colour** Green
- Code** SH81525

**4****3 Tattersal Shirt**

- Classic styling long sleeved shirt
 - One chest pocket
 - Full placket
- Fabric** 65% polyester, 35% cotton yarn dyed check, 120gsm
- Sizes** M, L, XL, XXL
- Colour** Blue check, Brown check
- Code** SH81500

**4 Castleford Shirt**

- Classic styling long sleeve shirt
 - One chest button down pocket
 - Full placket
- Fabric** 55% cotton, 45% polyester, yarn dyed check, 100gsm
- Sizes** M, L, XL, XXL
- Colour** Brown, Navy
- Code** SH81700

1



1 T-shirt

- Baggy fit
- Short sleeves
- Crew neck
- Side vents

Fabric 100% cotton, 180gsm
(Mid grey 85% cotton, 15% viscose)

Sizes S, M, L, XL, XXL, XXXL (except Red S-XXL)

Colour Black, Bottle Green, Burgundy, Mid Grey, Navy, Red, Royal Blue, White

Code SH34225



2



2 Short Sleeve Polo Shirt

- Short sleeves
- Three button front placket detail

Fabric 65% polyester, 35% cotton, 200gsm
(Mid Grey - 85% cotton, 15% viscose, 200gsm)

Sizes Black, Bottle Green, Mid Grey and Navy
S, M, L, XL, XXL, XXXL, XXXXL
Burgundy, Royal Blue and White
S, M, L, XL, XXL, XXXL
Red
S, M, L, XL, XXL

Colour Black, Bottle Green, Burgundy, Mid Grey, Navy, Red, Royal Blue, White

Code SH21220





3



4



3 Long Sleeve T-shirt

- Long sleeve crew neck T-shirt
- Loose fit

Fabric 100% cotton, 180gsm
(Mid Grey - 85% cotton, 15% viscose)

Sizes S, M, L, XL, XXL

Colour Black, Mid Grey, Navy

Code SH33100



Black



Mid Grey



Navy



4 Long Sleeve Polo Shirt

A long sleeve polo shirt that is ideal for work or leisure.

- Three button front
- Placket detail

Fabric 65% polyester, 35% cotton, 200gsm
(Mid Grey - 85% cotton, 15% viscose)

Sizes S, M, L, XL, XXL

Colour Black, Mid Grey, Navy

Code SH21100



Black



Mid Grey



Navy



5 Dickies Branded T-shirts, 3-pack

- Loose fit
- Sold as a solid size pack of three tees in one print design

Fabric 100% cotton, 180gsm

Sizes M, L, XL

Colour Assorted

Code SH34990



5



1



2





1 Dickies Branded T-shirts, 5-pack

- Improved fit
- Dickies branding on each design
- Sold as a pack of 5 with individual polybags for option of singular sale

Fabric 100% cotton, 180gsm
(Grey Melange - 85% cotton 15% viscose)

Sizes M, L, XL

Colour Assorted

Code SH5004



2 Dickies Branded T-shirts, 5-pack

Pack of five loose fit cotton t-shirts in five colours each with a different Dickies' themed design printed on the chest.

- Loose fit
- Sold as a solid size pack of five incorporating one of each design

Fabric 100% cotton, 180gsm
(Grey - 95% cotton, 5% viscose)

Sizes M, L, XL

Colour Assorted colours

Code SH36070







1



1 Baywood Hoody

- Improved fit
- Strong Dickies Branding
- Lined hood

Fabric 80% cotton, 20% polyester fleece, 280gsm
Hood lining 100% cotton single jersey, 180gsm

Sizes M, L, XL

Colour Grey

Code SH3002



2



2 Ashford Hoody

- Improved fit
- Strong Dickies Branding
- Lined hood

Fabric 65% polyester, 35% cotton brushed, 280gsm
Hood lining 100% cotton single jersey, 180gsm

Sizes M, L, XL

Colour Blue

Code SH3001



3



3 Fairfield Hoody

- Improved fit
- Ribbed hem & cuff
- Lined hood
- Drawcord adjustment

Fabric 65% polyester, 35% cotton brushed, 280gsm
Hood lining 100% cotton waffle, 180gsm

Sizes M, L, XL

Colour Green

Code SH3000



1



1 Commando Crew Neck Sweater

- Mens crew neck
- Elbow and shoulder patched with epaulettes in tonal twill

Fabric 100% acrylic, 16.5lbs/dz

Sizes Navy M, L, XL, XXL
Olive Green M, L, XL, XXL

Colour Navy, Olive Green

Code KN22100



Navy



Olive Green



2 Hooded Sweatshirt

- Attached hood with draw cord adjustment
- Ribbed hem and cuff

Fabric 65% polyester, 35% cotton, 280 gsm

Sizes M, L, XL, XXL

Colour Black,

Code SH11300

2





3



3 Crew Neck Sweatshirt

- Drop shoulder
- Ribbed hem and cuff

Fabric 65% polyester, 35% cotton, brushed fleece, 280gsm
(Mid Grey - 85% cotton, 15% viscose, 280gsm)

Sizes Black, Bottle Green, Mid Grey and Navy S, M, L, XL, XXL, XXXL, XXXXL.
Burgundy and Royal Blue S, M, L, XL, XXL, XXXL.
Red S, M, L, XL, XXL

Colour Black, Bottle Green, Burgundy, Mid Grey, Navy, Red, Royal Blue

Code SH11125



Black Bottle Burgundy Mid Grey Navy Red Royal



4



4 V-neck Sweatshirt

- Ribbed hem and cuff
- Drop shoulder

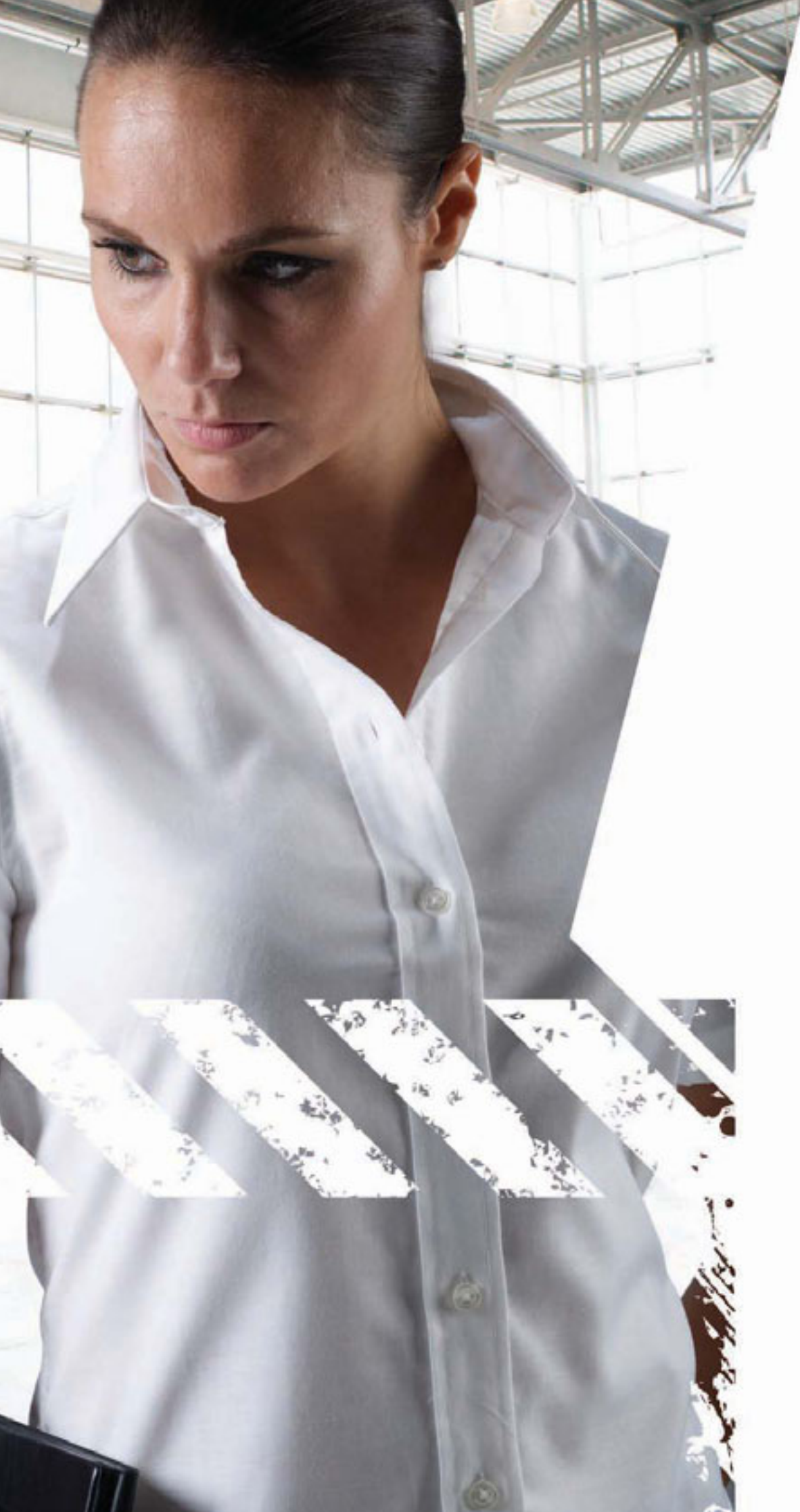
Fabric 65% polyester, 35% cotton, brushed fleece, 280gsm

Sizes S, M, L, XL, XXL

Colour Navy

Code SH11150





Ladies workwear



1

1



1 Ladies' Redhawk Zip Front Coverall

- Zip front with velcro fastened over placket
- Two chest pockets with velcro flaps and contrasting piping detail
- Contrast colour collar and inner storm flaps
- Two swing pockets
- Raglan sleeves
- Full waist elastication and a pleated action back
- Two lower leg pockets with velcro fastened flaps
- Tab velcro adjustable cuffs

Fabric 65% polyester, 35% cotton, 260gsm
Sizes 10, 12, 14, 16, 18, 20
Colour Navy
Code WD4839W

2



Black



Navy



2 Ladies' Fitted Polo Shirt

- Three button front placket detail
- Short sleeves
- Ladies fit

Fabric 65% polyester, 35% cotton, 200gsm
Sizes 8/10, 12/14, 16/18
Colour Black, Navy
Code SH21600

1



1 Foxton Ladies Jacket

- Water resistant 8000mm/ Breathable 1000mvp
- 2 zipped front pockets
- Adjustable elasticated draw cord to hem
- Adjustable cuffs

Fabric 94% polyester, 6% Spandex bonded with microfleece, 320gsm

Sizes S, M, L, XXL, XXXL

Colour Black, Navy

Code JW80000



Black



Navy

2



2 Ladies' Oxford Weave Shirt

- Round hem
- Inverted pleat in back for ease of movement

Fabric 70% cotton, 30% polyester Oxford, 135gsm

Sizes 8, 10, 12, 14, 16, 18, 20, 22, 24

Colour Blue, White

Code SH64300 (Long sleeve)

SH64350 (Short sleeve)



3



4



CORDURA

3 Eisenhower Ladies' Multi-pocket Trousers

Designed for women these work trousers have all the qualities that have become Eisenhower trademarks: tough and hardwearing but reflecting modern styles.

- Zip fastened with metal button waistband attachment
- Cordura® external knee pad pouches
- Multi-pocket detailing with tool pouches
- Velcro adjustment on waist
- Cargo pocket with multi-sections and stud fastened flap
- Two back patch pockets, one with stud fastened flap
- Hammer loop
- Rule pocket to right leg

Fabric 65% polyester, 35% cotton canvas, 300gsm

Sizes 10, 12, 14, 16, 18, Leg 32"

Colours Black

Code EH26000



4 Redhawk Ladies' Trousers

- YKK zip fly
- Plain front
- Double front pockets
- Two back welt pockets
- Phone pocket on right leg

Fabric 65% polyester, 35% cotton, 260gsm

Sizes 10, 12, 14, 16, 18, 20, Leg 31"

Colour Black, Navy

Code WD855



Black



Navy



See page 157 for ladies shoes



High Visibility





High visibility

Dickies extensive range of High Visibility Clothing is available in various styles and fabrics to meet different circumstances and conditions.

Garments designed for roadside working meet the current standards laid down in the safety at street and road works code of practice. (EN471 Class 1, 2 or 3)



1 Waterproof Safety Coverall

EN471:2003+A1:2007 Class 3 Level 2

EN343:2003+A1:2007 Class 3 Level 1

- Waterproof with stitched and tape welded seams
- Back elasticated waist
- Zips to outer leg seams with covering storm flap
- Two-way main zip with covering storm placket
- Internal knitted storm cuffs to the sleeves
- Drawcord adjustable hood

Fabric 100% polyester 300D with PU coating
Contrast panels 100% nylon 210D with PU coating

Lining 100% polyester taffeta
Quilting 100% polyester, 160gsm

Sizes M, L, XL, XXL

Colour Orange/Navy

Code SA7000

SYMBOL GUIDE



EN471 Class 3
Highest protection level (maximum visibility). Possible uses include trunk roads and other roads forming the Primary Route Network (PRN), (roads displaying green/blue directional signs) and all other roads with a speed limit of 40mph and above.



EN471 Class 2
Intermediate protection level (medium visibility). Possible uses include all other roads.



EN471 Class 1
Lowest level (lowest visibility). Possible uses include off road; areas of minimal risk. Note - Class 1 trousers should be added for additional visibility and safety.



EN1150
High Visibility clothing for non-professional use.



EN343 Class 3.3
Highest level EN343 classification for foul weather protection. Allowing perspiration vapour to escape while keeping water out.



EN343 Class 3.1
Lowest level EN343 classification for foul weather protection.



3M Scotchlite reflective tape
Complying with national and European standards for high visibility clothing.



2 High Visibility Bomber Jacket

EN471: 2003 + A1: 2007 Class 3 Level 2
EN343: 2003 + A1: 2007 Class 3 Level 1

- Waterproof with stitched and tape welded seams
- Concealed hood with drawcord
- Two 5cm high visibility strips around the body
- Two 5cm high visibility strips around each arm and one over each shoulder
- Two jetted outside pockets
- External mobile phone pocket
- Two internal pockets, one with pen divisions
- Two way zip
- Studded stormflap

Fabric 100% polyester 300D PU coated.
Lining 180T polyester quilted.
Polyester filling, 180gsm

Sizes Saturn Yellow: S, M, L, XL, XXL, XXXL, XXXXL
Orange: S, M, L, XL, XXL, XXXL

Colour Saturn Yellow, Orange

Code SA22050







1 Motorway Safety Jacket

EN471: 2003 + A1: 2007 Class 3 Level 2
EN343: 2003 + A1: 2007 Class 3 Level 1

- Waterproof with stitched and tape welded seams
- Two outer inset pockets with flaps
- One internal pocket
- Concealed knitted cuffs
- Hood with draw cord concealed under collar
- One zipped map pocket concealed behind stormflap
- Heavy duty two-way plastic zip
- Full length stormflap
- External mobile phone pocket
- Two 5cm high visibility strips around the body and on each arm
- One 5cm high visibility strip over each shoulder

Fabric Outer fabric 300D PU coated polyester.
Inner lining – polyester quilted with 180gsm polyester filling. Dripstrip

Sizes Saturn Yellow: S, M, L, XL, XXL, XXXL, XXXXL
Orange: S, M, L, XL, XXL, XXXL

Colour Saturn Yellow, Orange

Code SA22045



1



Saturn Yellow



Orange



2 Highway Safety Trousers

EN471: 2003 Class 1 Level 2
EN343: 2003 Class 3 Level 1

- Waterproof with stitched and tape welded seams
- Two 5cm high visibility strips around each leg
- Elasticated waist
- Side access
- Stud adjustment on leg hem

Fabric 100% 300D PU coated polyester

Sizes S, M, L, XL, XXL, XXXL, XXXXL

Colour Saturn Yellow

Code SA12005



2



3 High Visibility Waterproof Lightweight Jacket

Zip fastening jacket offering maximum high visibility protection and Dickies manufacturing quality.

EN471: 2003 + A1: 2007 Class 3 Level 2
EN343: 2003 + A1: 2007 Class 3 Level 1

- Two 5cm high visibility strips around the body, two on each arm and one over each shoulder
- Zip fastened front with studded stormflap
- Elasticated cuffs
- Tail hem with drawcord adjustment
- Two jet pockets
- Concealed hood

Fabric 100% 150D PU coated polyester

Sizes S, M, L, XL, XXL

Colour Saturn Yellow

Code SA22042



3

HIGH VISIBILITY





1



2



3



4



1 Technical Safety Waistcoat

EN471: 1994 Class 2 Level 2

- Two 5cm high visibility strips around the body and one over each shoulder
- Zip fastening
- Left chest pen pocket with plastic key fob
- Right chest mobile phone pocket
- Two lower front pockets complete with velcro fastened flaps
- Left hand lower pocket, complete with top loading security pocket

Fabric 100% knitted polyester tricot, 120gsm

Sizes S, M, L, XL, XXL

Colour Saturn Yellow

Code SA22020



2 Highway Safety Waistcoat

EN471: 2003 + A1: 2007 Class 2 Level 2

- Two 5cm high visibility strips around the body and one over each shoulder
- Velcro fastening

Fabric 100% knitted polyester tricot, 120gsm

Sizes M, L, XL, XXL

Colour High Visibility Orange

Code SA30310



3 Highway Safety Waistcoat

EN471: 2003 + A1: 2007 Class 2 Level 2

- Two 5cm high visibility strips around the body and one over each shoulder
- Velcro fastening

Fabric 100% knitted polyester tricot, 120gsm

Sizes S, M, L, XL, XXL, XXXL, XXXXL

Colour Saturn Yellow

Code SA22010



4 Children's Safety Waistcoat

EN1150: 1999

- Two 5cm high visibility strips around the body and one over each shoulder
- Velcro fastening

Fabric 100% knitted polyester tricot, 120gsm

Sizes 4-6 yrs, 7-9 yrs, 10-12 yrs

Colour Saturn Yellow

Code SA22007



5



5 High Visibility Safety Polo Shirt

EN471: 2003 Class 2 Level 2

- Two 5cm high visibility strips around the body and one over each shoulder
- Ribbed cuff on sleeve
- Rib polo collar with three button placket

Fabric 100% polyester, 170gsm

Sizes M, L, XL, XXL

Colour Saturn Yellow

Code SA22075



6



6 High Visibility Long Sleeve Polo Shirt

EN471:2003 Class 3 Level 2

- Ribbed sleeve cuff
- Three button placket

Fabric 100% polyester, 170gsm

Sizes M, L, XL, XXL

Colour Saturn Yellow

Code SA22077



7 High Visibility Lined Fleece Jacket

EN471: 2003 Class 3 Level 2

- Two 5cm high visibility strips around the body
- Two high visibility strips around each arm
- One 5cm high visibility strip over each shoulder
- Two jetted outside pockets with zips
- One inside pocket with velcro closure
- Elasticated drawcord hem with plastic toggles
- Elasticated cuffs

Fabric 100% polyester anti-pill fleece, 280gsm.
Lining 100% polyester mesh

Sizes M, L, XL, XXL, XXXL

Colour Saturn Yellow

Code SA22032



7

1



**2****1 High Visibility Safety Hooded Sweatshirt**

Offering maximum high visibility protection Dickies has taken the hoodie and turned it into a new style of safety garment.

EN471: 2003 +A1: 2007 Class 3 Level 2

- Two 5cm high visibility strips around the body
- One 5cm high visibility strip over each shoulder
- Knitted cuffs and hem
- Attached hood with draw cord adjustment
- Front kangaroo pocket
- Drop shoulder

Fabric 100% polyester, 280gsm
Sizes S, M, L, XL, XXL
Colour Saturn Yellow
Code SA22090

**3****2 High Visibility Safety T-shirt**

EN471: 2003 Class 2 Level 2

- Two 5cm high visibility strips around the body and one over each shoulder

Fabric 100% polyester, 170gsm
Sizes S, M, L, XL, XXL
Colour Saturn Yellow
Code SA22080

**3 High Visibility Polycotton Trousers**

EN471: 2003 + A1: 2007 Class 1 Level 2

- Two high visibility strips on each leg
- Side pockets
- Cargo pocket
- Side elastication

Fabric 80% polyester, 20% cotton, 275gsm
Sizes S, M, L, XL, XXL
Colour Saturn Yellow
Code SA35015



GO/RT. ³²⁷⁹

Our new range of GO/RT safety clothing is manufactured to meet GO/RT 3279 and BS EN471: 2003 standards.

Designed for high visibility, and constructed with hard wearing fabric to ensure durability and performance, these garments are essential for being seen and safe trackside.



1 GO/RT Bomber Jacket

A high visibility, waterproof, bomber jacket that meets the Railway Group Standard GO/RT 3279. Part of a selection of high visibility garments bringing Dickies' PPE expertise to the rail industry.

EN471: 2003+A1:2007 Class 3 Level 2

EN343: 2003+A1:2007 Class 3 Level 3

GO/RT 3279: 2008

- Waterproof with stitched and tape welded seams
- Concealed hood with drawcord
- Two 5cm high visibility strips around the body
- Two 5cm high visibility strips around each arm and one over each shoulder
- Two jettied outside pockets
- External mobile phone pocket
- Two internal pockets, one with pen divisions
- Two way zip
- Studded stormflap

Fabric 100% polyester 300D PU coated. Lining 180T polyester

Sizes S, M, L, XL, XXL, XXXL, XXXXL

Colour High Visibility Orange

Code SA42050



2

**2 GO/RT Polo Shirt**

Ideal for summer this high visibility polo shirt will help to keep you cool as the temperature rises.

EN471: 2003+A1:2007 Class 2 Level 2
GO/RT 3279:2004

- Two 5cm high visibility strips around the body and one over each shoulder
- Ribbed cuff on sleeve
- Rib polo collar with three button placket

Fabric 100% polyester, 170gsm
Sizes M, L, XL, XXL
Colour High Visibility Orange
Code SA42075



3

**3 GO/RT Parka Jacket**

EN471: 2003+A1:2007 Class 3 Level 2
EN343: 2003+A1:2007 Class 3 Level 3
GO/RT 3279: 2008

- Waterproof and breathable fabric with stitched and tape welded seams
- Two 5cm high visibility strips around the body and sleeves
- One high visibility strip over each shoulder
- Two way zip
- Full length storm flap with studs
- Two outer inset pockets with flaps
- Concealed hood with studs for easy removal

Fabric 100% polyester 300D PU coated. Lining 180T polyester
Sizes S, M, L, XL, XXL, XXXL, XXXXL
Colour High Visibility Orange
Code SA42045i

**4 GO/RT Overtrousers**

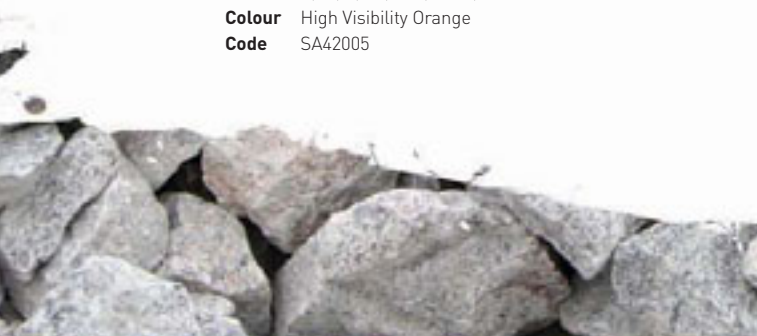
Designed and manufactured to meet the tough demands of the rail industry these overtrousers are hardwearing and waterproof.

EN471: 2003+A1:2007 Class 1 Level 2
EN343: 2003+A1:2007 Class 3 Level 3
GO/RT 3279: 2008

- Waterproof with stitched and tape welded seams
- Two 5cm high visibility strips around each leg
- Elasticated waist
- Side access
- Stud adjustment on leg hem

Fabric 100% 300D PU coated polyester
Sizes S, M, L, XL, XXL, XXXL, XXXXL
Colour High Visibility Orange
Code SA42005

4





1



2



3



1 GO/RT Technical Waistcoat

EN471:2003+A1:2007 Class 2 Level 2
GO/RT 3279:2008

- One 5cm high visibility strip around the body
- One high visibility strip over each shoulder
- Elasticated strip in back panel
- Zip fastening
- Stud adjustable shoulder seams for quick release
- Velcro adjustable side seams for quick release
- Lower inset pockets one with clear plastic ID pocket
- Zip access to concealed rear pocket

Fabric 80% polyester, 20% cotton

Sizes M, L, XL, XXL

Colour High Visibility Orange

Code SA40320



3 GO/RT Polycotton Safety Jacket

Made from a tough workwear fabric this lightweight jacket provides maximum high visibility protection.

EN471: 2003+A1:2007 Class 3 Level 2
GO/RT 3279:2004

- Two high visibility strips around the body
- Two high visibility strips on each arm
- One high visibility strip over each shoulder
- Stud fastening cuffs
- Zip fastening
- Two lower jet pockets

Fabric 85% polyester, 15% cotton, 275gsm

Sizes S, M, L, XL, XXL

Colour High Visibility Orange

Code SA45025



2 GO/RT Waistcoat

An elasticated strip in the back panel offers freedom of movement even when performing the most strenuous tasks. Adjustable studs are fitted at the shoulder and side seams for quick release.

EN471: 2003+A1:2007 Class 2 Level 2
GO/RT 3279: 2008

- One high visibility strip around the body and one over each shoulder
- Zip Fastening
- Elasticated strip in back panel
- Stud adjustable shoulder and side seams for quick release

Fabric 80% polyester, 20% cotton, 280gsm

Sizes M, L, XL, XXL

Colour High Visibility Orange

Code SA40310



4 GO/RT Polycotton Safety Trousers

Safety trousers fitted with cargo pockets to carry essential items comfortably and safely.

EN471: 2003+A1:2007 Class 1 Level 2
GO/RT 3279:2004

- Two high visibility strips on each leg
- Stud adjustment on bottom of legs
- Side pockets
- Cargo pocket with mobile phone holder
- Two rear pockets
- Side elastication

Fabric 85% polyester, 15% cotton, 275gsm

Sizes S, M, L, XL, XXL

Colour High Visibility Orange

Code SA45010



4



5



5 GO/RT Polycotton Coverall

A coverall designed for comfort and durability with high visibility protection.

EN471: 2003+A1:2007 Class 3 Level 2
GO/RT 3279:2004

- Two high visibility strips around the body, each arm and on each leg
- One high visibility strip over each shoulder
- Zip fastening front
- Stud fastening cuffs
- Stud adjustment on bottom of legs
- Two chest pockets with velcro fastening
- Side pockets
- Side elasticsation

Fabric 85% polyester, 15% cotton, 275gsm
Sizes S, M, L, XL, XXL
Colour High Visibility Orange
Code SA45000







Flame Retardant



FLAME RETARDANT

Flame Retardant - Workers can be assured that Dickies Flame Retardant garments will provide protection as per the up-to-date regulations.



1 Proban® Safety Coverall

EN471:2003+A1:2007 Class 3 Level 2
EN ISO 11612:2008 A1+A2 B1 C1 F1
EN ISO 11611:2007 Class 2 - A1+A2

- Concealed stud front
- Side swing pockets in self fabric, side access
- Reinforced stress points
- Back pocket and ruler pocket
- Two chest pockets with concealed single stud flap
- Domestic laundry 60°C - Max 50x

Fabric 100% cotton drill, with Proban® flame retardant finish, 330gsm

Sizes Leg 31.5" Chest 36" - 54"

Colour Yellow


Code FR4870


**THIS GARMENT
IS NOT SUITABLE FOR
INDUSTRIAL LAUNDRY**





SYMBOL GUIDE

- 
EN533:1997
(now superseded by EN ISO 14116:2008)
 Protection against heat and flame - Limited flame spread materials and material assemblies.
- 
EN ISO 14116:2008
 Protection against heat and flame - Limited flame spread materials, material assemblies and clothing.
- 
EN531:1995
 Protective clothing for workers exposed to heat.
- 
EN ISO 11612:2008
(Successor of EN 531:1995)
 Protective clothing to protect against heat and flame.


EN ISO 11611:2007 (successor of EN 470-1:1995)
 Protective clothing for use in welding and allied processes.


EN1149-3:2004
 Protective clothing - Electrostatic properties.
 Part 3: Test methods for measurement of charge decay.


EN1149-5:2008
 Protective clothing - Electrostatic properties.
 Part 5: Material performance and design requirements.


PROBAN®
 A flame retardant solution that provides peace of mind to both industrial and consumer markets. Developed to give cotton and cotton rich fabrics reliable flame retardant properties that meet industry fire regulations. PROBAN® fabrics are durable to modern day conditions.

PYROVATEX®

PYROVATEX® is one of the most widely used flame retardant treatments for 100% cotton fabrics. Pyrovatex® not only affords regulation protection for the whole life of the garment, but the cotton retains its comfort and durability.



2



2 Dickies Proban® Coverall

EN ISO 11612:2008 A1+A2 B1 C1 F1
EN ISO 11611:2007 Class 1 - A1+A2

- Concealed stud front
- Two chest patch pockets with concealed single stud flap
- Back pocket and rule pocket
- Reinforced stress points
- Side swing pockets in self fabric, side access
- Stud adjuster to sleeve cuffs
- Studded neck closure
- Industrial Laundry 75°C - Max 50x
- Performance guaranteed up to 50 washes

Fabric 100% cotton drill, with Proban® flame retardant finish, 330gsm

Sizes Leg 31.5", Chest 36" - 54"
 (sizes 56" and 58" available in Navy only)

Colour Navy, Orange, Red, Royal, Vat Green

Code FR4869



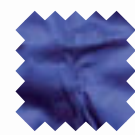
Navy



Orange



Red



Royal



Vat Green

THIS GARMENT IS SUITABLE FOR INDUSTRIAL LAUNDRY



1 Firechief Coverall

EN ISO 11612:2008 A1 B1 C1
EN ISO 11611:2007 Class 2 - A1

- High Visibility FR strips
- Triple stitched seams
- Reinforced stress points
- Action back
- Side Elastication
- Concealed heavy duty two-way brass zip
- Studded neck closure
- Two covered zipped chest pockets
- Two covered back pockets with studflap
- One pen pocket with stud flap
- Stud adjuster to sleeve cuffs
- One rule pocket

Fabric Pyrovatex® treated 100% cotton, 350gsm

Sizes Leg 31", R 38", T 54"

Colour Navy, Orange, Red, Royal Blue

Code FR5060



1



Navy



Orange



Red



Royal

THIS GARMENT IS NOT SUITABLE FOR INDUSTRIAL LAUNDRY



2 Firechief Lightweight Coverall

EN ISO 11612:2008 A1 B1 C1

- High visibility strips, one on each arm and leg and one over each shoulder
- Triple stitched seams
- Reinforced stress points
- Action back
- Side elasticsation
- Studded neck closure
- Stud adjuster to sleeve cuffs
- Concealed heavy duty two-way brass zip
- Two covered zipped chest pockets
- Side swing access
- Two covered back pockets
- One pen pocket
- One rule pocket

Fabric Pyrovatex® treated 100% cotton, 220gsm

Sizes Leg 31", Chest 36" - 54"

Colour Navy, Orange, Red, Royal Blue

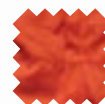
Code FR5055



2



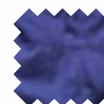
Navy



Orange



Red



Royal

THIS GARMENT IS NOT SUITABLE FOR INDUSTRIAL LAUNDRY



FLAME RETARDANT



1



1



2



1 Firechief Antistatic Coverall

EN531:1995 A B1 C1
EN1149-5:2008

- High visibility strips, one on each arm and leg and one over each shoulder
- Triple stitched seams
- Reinforced stress points
- Side elastication
- Action back
- Studded neck closure
- Stud adjuster to sleeve cuffs
- Concealed heavy duty two-way brass zip
- Two covered zipped chest pockets
- Side swing pockets
- Two covered back pockets
- One pen pocket
- One rule pocket
- Steel fibre

Fabric 98% cotton, 2% antistatic (steel), 310gsm
Sizes Leg 30", Chest 38" - 54"
Colour Orange, Red, Royal
Code WD5075



THIS GARMENT IS NOT SUITABLE FOR INDUSTRIAL LAUNDRY



2 Firechief Lined Coverall

EN531:1995 A B1 C1

- High visibility strips, one on each arm and leg and one over each shoulder
- Triple stitched seams
- Reinforced stress points
- Side elastication
- Action back
- Studded neck closure
- Stud adjuster to sleeve cuffs
- Concealed heavy duty two-way brass zip
- Two covered zipped chest pockets
- Side swing pockets
- Two covered back pockets
- One pen pocket
- One rule pocket

Fabric Pyrovatex® treated 100% cotton, 350gsm. Inner lining 100% Pyrovatex® treated cotton, 180gsm. Filling polyfil, 100gsm

Sizes Leg 31", Chest 38" - 54"
Colour Orange, Red, Royal
Code WD5025



THIS GARMENT IS NOT SUITABLE FOR INDUSTRIAL LAUNDRY



3



Kevlar Flame Retardant Boot FD23378
page 149



3 Flame Retardant Polo Shirt

EN ISO 11612:2008 A1 B1 C1
EN1149-5:2008
EN1149-3:2004

- Three button placket detail
- Long inset sleeves
- With natural wicking properties

Fabric 60% modacrylic, 38% cotton,
2% antistatic, 210gsm

Sizes M, L, XL, XXL

Colour Navy

Code FR5003



4



4 Flame Retardant Thermals Set

EN ISO 11612:2008 A1 B1 C1
EN1149-5:2008
EN1149-3:2004

- Long sleeved vest
- Crew neck
- Elasticated waist long johns
- Moisture wicking properties

Fabric 60% modacrylic, 38% cotton,
2% antistatic, single jersey 170gsm

Sizes M, L, XL, XXL

Colour Grey

Code FR5002





Footwear



Footwear

Footwear Safety Classifications

Safety footwear standard EN345 is being superseded by EN ISO 20345. Any footwear that has been tested to EN345 can continue to be sold, however any new designs will have to be tested to the new standard.

Which standard your footwear is tested to is identified on the product information label, this is found within the boot or shoe.

Highest protection, toe-caps are tested to 200 Joules. Classification S.

- SB** Safety basic 200 Joule protection.
- S1** 200 Joule toe-cap protection. Closed seat region (fully enclosed heel). Antistatic properties. Energy absorption of seat region.
- S2** 200 Joule toe-cap protection. Closed seat region (fully enclosed heel). Antistatic properties. Energy absorption of seat region. Water penetration and water absorption resistance.
- S3** 200 Joule toe-cap protection. Closed seat region (fully enclosed heel). Antistatic properties. Energy absorption of seat region. Water penetration and water absorption resistance. Plus penetration resistance. Cleated outsole.
- S4** 200 Joule toe-cap protection. All rubber or all polymeric footwear with antistatic properties. Energy absorption of seat region.
- S5** 200 Joule toe-cap protection. All rubber or all polymeric footwear with antistatic properties. Energy absorption of seat region. Plus penetration resistance. Cleated outsole.

Additional Safety Features

Should these products offer some extra protective features then the appropriate symbol will be added.

i.e. A product that provides 200 Joule impact protection, is antistatic and has a heat resistant outsole will be marked SB A HRO.

- P** Penetration resistance offered by a midsole.
- C** Conductive footwear.
- A** Antistatic footwear.
- HI** Insulation against heat.
- CI** Insulation against cold.
- E** Energy absorption of seat region.
- WRU** Water penetration and water absorption resistance.
- HRO** Resistance to hot contact up to 300°C.
- SRA** Footwear is resistant to slippage on a ceramic tiled floor with sodium Laurel sulphate lubricant.
- SRB** Footwear is resistant to slippage on steel with Glycerol lubricant.
- SRC** Footwear is resistant to slippage on steel with Glycerol lubricant and ceramic tiled floor with sodium Laurel sulphate lubricant.

SYMBOL GUIDE



Safety Footwear

A range of footwear with toe-cap protection only. All toe-caps are tested to 200 Joules impact and 15KN compression.



Safety Footwear with Midsole

A range of footwear with toe-cap protection and the additional feature of a protective midsole to safeguard the wearer against hazards underfoot. All Super Safety Footwear conforms to the current regulations governing this range of essential products.



Anti-static Footwear

Eliminates or reduces static charges by dissipating charge into the floor.



Thinsulate Lining

A lightweight thermal insulation used for footwear.



Goodyear Welted

A traditional and extremely robust method of manufacture. The sewn welt secures the upper to the inner sole, the outer sole is then attached to the welt.



Water Resistant

Water penetration and water absorption resistance.



Cambrelle® Lining

Breathable lining designed to keep the foot warmer in winter and cooler in summer.



1 Trinity Non-Safety Boot

- Ergonomically designed
- Padded insole for extra underfoot comfort
- Goodyear welt construction
- Oil resistant sole

Upper Full grain leather
Sizes 6, 7, 8, 9, 10, 11, 11.5, 12
Colour Brown, Tan
Code FN23700



Brown

Tan



Brown

Tan



2 Welton Non-Safety Boot

- Ergonomically designed
- Padded sole for added under foot comfort
- Goodyear welt construction
- Oil resistant sole
- 7 eyelet lace up boot

Upper Full grain leather
Sizes 6, 7, 8, 9, 10, 11, 11.5, 12
Colour Brown, Tan
Code FN23600







Urban Hi Boot

EN ISO 20345:2004/A1:2007 S1-P CI SRC

- Composite toecap to EN20345 (200 Joules)
- Non-metallic midsole for underfoot protection
- Antistatic sole
- Cemented rubber outsole
- Padded collar and tongue

Upper Fullgrain cow leather
Thinsulate™ lining

Sizes 6, 7, 8, 9, 10, 11, 11.5, 12

Colour Black

Code FC9507



1



1 Urban Boot

EN ISO 20345:2004/A1:2007 S1-P CI SRC

- Composite toecap to EN20345 (200 Joules)
- Non-metallic midsole for underfoot protection
- Antistatic sole
- Cemented rubber outsole
- Padded collar and tongue

Upper Fullgrain cow leather
Thinsulate™ lining

Sizes 6, 7, 8, 9, 10, 11, 11.5, 12

Colour Black

Code FC9506



2



2 Donegal Boot

EN ISO 20345:2004/A1:2007 S1-P SRA

- Steel toecap to EN20345 (200 Joules)
- Steel midsole for underfoot protection
- Dual density PU sole
- Ergonomically designed
- Padded tongue

Upper Nubuck cow leather

Sizes 3, 4, 5, 5.5, 6, 7, 8, 9, 10, 11, 11.5, 12

Colour Honey

Code FA9001



3 Antrim Super Safety Boot

EN ISO 20345:2004 S1-P

- 6" leather workboot
- Seven eyelets
- Padded tongue
- Dual density PU sole
- Steel toe-cap to EN20345 (200 Joules)
- Steel midsole for underfoot protection
- Oil resistant
- Slip resistant
- Ergonomically designed

Upper Leather

Sizes 6, 7, 8, 9, 10, 11, 12 (Black, Brown)

6, 7, 8, 9, 10, 11, 11.5, 12 (Chestnut)

Colour Black, Brown, Chestnut

Code FA23333



Brown



Black

3



Chestnut

Lightweight safety footwear



1 Elbe Safety Trainer

EN ISO 20345:2004/A1:2007 S3 SRA

- Certified to S3 standard
- Lightweight rubber outersole
- Composite toe-cap to EN20345 (200 Joules)
- Non-metallic midsole for underfoot protection
- Sole slip resistant to SRA standard
- 100% Non-metallic trainer
- Cambrelle® Lining

Upper Nylon mesh, synthetic leather

Sizes 6, 7, 8, 9, 10, 11, 11.5, 12

Colour Black

Code FC23700



Cambrelle®



2 Mosel Safety Boot

EN ISO 20345:2004/A1:2007 S3 SRA

- Certified to S3 standard
- Lightweight rubber outersole
- Composite toe-cap to EN20345 (200 Joules)
- Non-metallic midsole for underfoot protection
- Sole slip resistant to SRA standard
- 100% Non-metallic boot
- Cambrelle® Lining

Upper Nylon mesh, synthetic leather

Sizes 6, 7, 8, 9, 10, 11, 11.5, 12

Colour Black

Code FC23710



Cambrelle®



D

FOOTWEAR



1



1 Murcia Trainer

EN ISO 20345:2004/A1:2007 S3 SRC

- Composite toecap to EN20345 (200 Joules)
- Water resistant upper
- Non-metallic midsole for underfoot protection
- Antistatic sole
- Cemented rubber outsole with EVA insert
- Padded collar and tongue
- External toe guard

Upper Waxy fullgrain cow leather

Sizes 6, 7, 8, 9, 10, 11, 11.5, 12

Colour Brown

Code FC9500



2 Murcia Boot

EN ISO 20345:2004/A1:2007 S3 SRC

- Composite toecap to EN20345 (200 Joules)
- Water resistant upper
- Non-metallic midsole for underfoot protection
- Antistatic sole
- Cemented rubber outsole with EVA insert
- Padded collar and tongue
- External toe guard

Upper Waxy fullgrain cow leather

Sizes 6, 7, 8, 9, 10, 11, 11.5, 12

Colour Brown

Code FC9503



2



3



3 Cordoba Boot

EN ISO 20345:2004/A1:2007 S3 SRC

- Composite toecap to EN20345 (200 Joules)
- Water resistant upper
- Non-metallic midsole for underfoot protection
- Antistatic sole
- Cemented rubber outsole with EVA insert
- Padded collar and tongue
- External toe guard

Upper Nubuck cow leather

Sizes 6, 7, 8, 9, 10, 11, 11.5, 12

Colour Honey

Code FC9504



4 Tiber Super Safety Trainer

EN ISO 20345:2004/A1 2007 S3 SRA

- Slip resistant sole to SRA standard
- Water resistant upper
- Composite toe-cap to EN20345 (200 Joules)
- Non-metallic anti-penetration sole
- Padded collar and tongue
- Antistatic sole
- Shock absorbent heel
- Oil resistant sole

Upper Mesh

Sizes 6, 7, 8, 9, 10, 11, 11.5, 12

Colour Black, Navy

Code FC23530





1

Black

Navy



1 Arno Boot

EN ISO 20345:2004/A1 2007 S3 SRA

- Slip resistant sole to SRA standard
- Water resistant upper
- Composite toe-cap to EN20345 (200 Joules)
- Non-metallic anti-penetration sole
- Padded collar and tongue
- Antistatic sole
- Shock absorbent heel
- Oil resistant sole

Upper Mesh
Sizes 6, 7, 8, 9, 10, 11, 11.5, 12
Colour Black, Navy
Code FC23540



2



2 Parma Safety Trainer

EN ISO 20345:2004/A1:2007 S1-P SRA

- Certified to S1-P standard
- Rubber outersole
- Composite toe-cap to EN20345 (200 Joules)
- Non-metallic midsole for underfoot protection
- Slip resistant sole to SRA standard

Upper Nylon mesh, Synthetic Leather
Sizes 6, 7, 8, 9, 10, 11, 11.5, 12
Colour Black
Code FC23600



3



3 Dalton Boot

EN ISO 20345:2004/A1:2007 S1-P SRC

- Steel toecap to EN20345 (200 Joules)
- Steel midsole for underfoot protection
- Antistatic sole
- Cemented rubber outsole
- Padded collar and tongue
- External rubber toe guard

Upper Suede cow leather
Sizes 6, 7, 8, 9, 10, 11, 11.5, 12
Colour Black
Code FD9201



4



4 Dalton Trainer

EN ISO 20345:2004/A1:2007 S1-P SRC

- Steel toecap to EN20345 (200 Joules)
- Steel midsole for underfoot protection
- Antistatic sole
- Cemented rubber outsole
- Padded collar and tongue
- External rubber toe guard

Upper Suede cow leather
Sizes 6, 7, 8, 9, 10, 11, 11.5, 12
Colour Black
Code FD9200



5 Gironde Trainer

EN ISO 20345:2004/A1:2007 S3 SRA

- Composite toe-cap to EN20345 (200 Joules)
- Non-metallic midsole for underfoot protection
- Padded collar and tongue
- Lightweight rubber outsole

Upper Nubuck cow leather, nylon mesh

Sizes 6, 7, 8, 9, 10, 11, 11.5, 12

Colour Brown

Code FC9508



5



6 Arcus Super Safety Shoe

Dickies selection of safety trainers is expanded with this new lightweight shoe. The Arcus is a new design with Dickies' trademark manufacturing expertise.

EN ISO 20345: 2004 S1-P

- Composite toe-cap to EN20345 (200 Joules)
- Composite midsole for underfoot protection
- Reflective tape
- Arch support insole
- Antistatic and energy absorbent heel
- Oil, slip and chemical resistant
- Padded collar and tongue
- Quick lace up system

Upper Full grain leather with mesh

Sizes 6, 7, 8, 9, 10, 11, 11.5, 12

Colour Black

Code FC23366



6



7 Alto Super Safety Shoe

EN ISO 20345:2004/A1: 2007 S3 SRA

- Water resistant upper
- Composite toe-cap
- Non-metallic anti-penetration mid sole
- 100% non-metallic design
- Padded tongue and collar
- Anti-static and heat resistant sole
- Sole slip resistant to SRA standard
- Oil resistant sole
- Shock absorbent heel
- Flexible dual density sole

Upper Leather

Sizes 3, 4, 5, 5.5, 6, 7, 8, 9, 10, 11, 11.5, 12

Colour Black

Code FC23344



7



8 Fractus Super Safety Boot

EN ISO 20345:2004/A1: 2007 S3 SRA

- Water resistant upper
- Composite toe-cap
- Non-metallic anti-penetration mid sole
- 100% non-metallic design
- Padded tongue and collar
- Anti-static and heat resistant sole
- Sole slip resistant to SRA standard
- Oil resistant sole
- Shock absorbent heel
- Flexible dual density sole

Upper Leather

Sizes 3, 4, 5, 5.5, 6, 7, 8, 9, 10, 11, 11.5, 12

Colour Black

Code FC23340



8



1



1 Teton Super Safety Trainer

EN ISO 20345:2004/A1: 2007 S3 SRA

- Water resistant upper
- Slip resistant sole
- Composite toe-cap to EN20345 (200 Joules)
- Non-metallic anti-penetration midsole
- 100% non-metallic
- Antistatic sole
- Shock absorbent heel
- Oil resistant sole
- Breathable sole
- Sole slip resistant to SRA standard

Upper Nubuck Leather & Mesh

Sizes 6, 7, 8, 9, 10, 11, 11.5, 12

Colour Black

Code FC23475



2



2 Logan Super Safety Sandal

EN ISO 20345:2004/A1 2007 S1-P SRA

- Slip resistant sole
- Composite toe-cap to EN20345 (200 Joules)
- Non-metallic anti-penetration midsole
- 100% non-metallic
- Antistatic sole
- Shock absorbent heel
- Oil resistant sole
- Breathable sole
- Sole slip resistant to SRA standard

Upper Nubuck Leather & mesh

Sizes 6, 7, 8, 9, 10, 11, 11.5, 12

Colour Black

Code FC23480



3 Granite Super Safety Boot

EN ISO 20345:2004/A1: 2007 S3 SRA

- Water resistant upper
- Slip resistant sole
- Composite toe-cap to EN20345 (200 Joules)
- Non-metallic anti-penetration midsole
- 100% non-metallic
- Antistatic sole
- Shock absorbent heel
- Oil resistant sole
- Breathable sole
- Sole slip resistant to SRA standard

Upper Nubuck Leather & mesh

Sizes 6, 7, 8, 9, 10, 11, 12

Colour Black

Code FC23470

WHILE STOCKS LAST



3



4 Idaho Safety Shoe

EN ISO 20345:2004 S1-P

- Padded Collar and Tongue
- Antistatic and Heat Resistant Sole
- Steel toe-cap to EN20345 (200 Joules)
- Oil and Slip Resistant Sole

Upper Embossed Leather

Sizes 6, 7, 8, 9, 10, 11, 12

Colour Navy

Code FD23390

WHILE STOCKS LAST



4



5 Rushden Trainer

EN ISO 20345:2004/A1:2007 S3 SRC

- Composite toecap to EN20345 (200 Joules)
- Water resistant upper
- Non-metallic midsole for underfoot protection
- Antistatic sole
- Cemented rubber outsole with EVA insert to the heel
- Padded collar and tongue

Upper Nubuck cow leather

Sizes 6, 7, 8, 9, 10, 11, 11.5, 12

Colour Grey

Code FC9502



5





Calder Boot

EN ISO 20345:2004/A1:2007 S3 SRC

- Steel toecap to EN20345 (200 Joules)
- Steel midsole for underfoot protection
- Internal water resistant membrane
- Padded collar and tongue
- Antistatic sole
- Cemented rubber outsole with Phylon insert

Upper Waxy fullgrain cow leather

Sizes 6, 7, 8, 9, 10, 11, 11.5, 12

Colour Brown

Code FD9202





1 Medway Super Safety Hiker

A distinctive safety boot featuring the qualities that have contributed to Dickies reputation in this field of PPE: comfort, durability and protection.

EN ISO 20345: 2004/A1 2007 S3 SRA

- Steel toe-cap to EN20345 (200 Joules)
- Steel midsole for underfoot protection
- Waterproof membrane
- Thinsulate™ lining
- Scuff cap and heel guard
- Lace protector
- Sole slip resistant to SRA standard
- Antistatic and energy absorbent heel

Upper Full grain waxy cow leather

Sizes 6, 7, 8, 9, 10, 11, 11.5, 12

Colour Black, Brown

Code FD23310



Black

1



Brown



2 Tamar Super Safety Boot

EN ISO 20345: 2004 S3

- Padded collar and tongue
- Breathable lining
- PU/TPU sole
- Water repellent nubuck leather
- Steel toe-cap to EN20345 (200 Joules)
- Steel midsole for underfoot protection
- Antistatic and energy absorbent heel
- Two tone sole
- Oil and slip resistant

Upper Nubuck Leather

Sizes 6, 7, 8, 9, 10, 11, 12

Colour Camel

Code FD23315



2



3



3 Severn Super Safety Boot

EN ISO 20345: 2004 S3

- Padded collar and tongue
- Water repellent leather
- Steel toe-cap to EN20345 (200 Joules)
- Steel midsole for underfoot protection
- Antistatic and energy absorbent heel
- Dual density PU sole
- Shock absorbent sole
- Slip resistant sole

Upper Leather with mesh trim

Sizes 4, 5, 6, 7, 8, 9, 10, 11, 12, 13, 14

Colour Black

Code FA23500



4



4 Thames Super Safety Waterproof Hiker

EN ISO 20345: 2004/A1 2007 S3

- Padded collar and tongue
- PU rubber sole
- Sole slip resistant to SRA standard
- Cemented construction
- Water repellent membrane
- Antistatic and energy absorbent heel
- Steel toe-cap to EN20345 (200 Joules)
- Steel midsole for underfoot protection
- Rear pull up loop

Upper Leather and mesh

Sizes 6, 7, 8, 9, 10, 11, 12

Colour Black

Code FD23305



5 Munro Boot

EN ISO 20345:2004/A1:2007 S3 WRU SRC

- Steel toecap to EN20345 (200 Joules)
- Steel midsole for underfoot protection
- Internal water resistant membrane
- Padded collar and tongue
- Antistatic sole
- Cemented rubber outsole with Phylon insert

Upper Fullgrain cow leather

Sizes 6, 7, 8, 9, 10, 11, 11.5, 12

Colour Burgundy

Code FD9203



5



1 Industrial Rigger Boot

EN ISO 20345:2004/A1:2007 SB-P HRO SRC

- Steel toe-cap to EN20345 (200 Joules)
- Steel midsole for underfoot protection
- Unlined with internal suede heel counter
- Goodyear welted construction
- Oil resistant nitrile rubber sole

Upper Full grain cow leather

Sizes 3, 4, 5, 5.5, 6, 6.5, 7, 7.5, 8, 8.5, 9, 9.5, 10, 11, 11.5, 12, 13

Colour Brown

Code FD25000

1





2 Super Safety Scuff Cap Rigger

Protection and comfort in the reliable form of this mock fur lined rigger boot. The added feature of a scuff cap to protect the leather toe area will prolong the life of the boot.

EN ISO 20345: 2004/A1 2007 S1-P SRA

- Steel toe-cap to EN20345 (200 Joules)
- Sole slip resistant to SRA standard
- Steel midsole for underfoot protection
- Mock fur lined leather boot
- Pull on loops
- Heel guard
- Antistatic and energy absorbent heel
- Oil and slip resistant

Upper Leather
Sizes 6, 7, 8, 9, 10, 11, 11.5, 12
Colour Tan
Code FA23370



3 Super Safety Rigger Boot (Lined and Unlined)

EN ISO 20345: 2004 S3

- Pull up loops
- Antistatic plus shock absorbent heel
- Steel toe-cap to EN20345 (200 Joules)
- Steel midsole for underfoot protection
- Lightweight polyurethane sole
- Water resistant
- Oil and slip resistant sole
- Lined version as above but with internal mock fur lining

Upper Leather
Sizes 6, 7, 8, 9, 10, 11, 12
Colour Tan
Code FA23350 (Lined)
 FA23355 (Unlined)



Lined

Unlined



KEVLAR®

Flame Retardant



Kevlar® Flame Retardant Boot

Ergonomically designed this is an exceptionally robust safety boot with flame retardant properties.

EN ISO 20345: 2004/A1 2007 S3 SRA
EN15090: 2006 F2A H13 C1

- Full waterproof lining
- Kevlar® threaded upper for extra strength
- Reflective materials for high visibility
- Sympatex® lining
- Side zip for easy removal and access
- Breathable lining
- Composite midsole for underfoot protection
- Scuff cap
- Pull on loops
- Heat and oil resistant sole
- Antistatic and energy absorbing sole
- Ergonomically designed
- Composite toe-cap to EN20345 (200 Joules)

Upper Black leather
Sizes 6, 7, 8, 9, 10, 11, 11.5, 12
Colour Black
Code FD23378

Pull on loops



Kevlar® stitching on boot upper for added durability and resistance to heat.

Reflective piping

Scuff cap

Composite midsole ensures complete underfoot protection.



2



1

Black

Oiled Black



1 Fury Super Safety Hiker

EN ISO 20345: 2004/ A1:2007 S1-P SRA

- Steel midsole for underfoot protection
- Antistatic plus shock absorbent heel
- Dual density polyurethane sole
- Sole slip resistant to SRA standard
- Steel toe-cap to EN20345 (200 Joules)

Upper Leather and mesh
Sizes 4, 5, 6, 7, 8, 9, 10, 11, 12
Colour Black, Oiled Black
Code FA23380A



2



2 Storm Super Safety Trainer

EN ISO 20345: 2004/ A1:2007 S1-P SRA

- Steel toe-cap to EN20345 (200 Joules)
- Steel midsole for underfoot protection
- Dual density polyurethane sole
- Sole slip resistant to SRA standard

Upper Suede and mesh
Sizes 4, 5, 6, 7, 8, 9, 10, 11, 12
Colour Grey
Code FA23385A



1 Cleveland Super Safety Boot

EN ISO 20345: 2004/A1 2007 SB-P SRA

- Quality leather ankle boot
- Padded collar and tongue
- Breathable padded quarter lining for extra comfort
- Full length padded insock
- Lightweight rubber sole
- Steel midsole for underfoot protection
- Goodyear welt construction
- Heat resistant sole to 300°C
- Sole slip resistant to SRA standard
- Oil resistant sole
- Dark brown in greasy leather
- Ergonomically designed
- Steel toe-cap to EN20345 (200 Joules)

Upper Nubuck leather (Honey)
Leather (Black, Chestnut, Dark Brown)

Sizes 3, 4, 5, 6, 7, 8, 9, 10, 11, 12 (Black)
6, 7, 8, 9, 10, 11, 12 (Chestnut, Dark Brown,
Honey)

Colour Black, Chestnut, Dark Brown, Honey

Code FA23200



2



Black

Brown



2 Berwick Super Safety Hiker

EN ISO 20345: 2004 S1-P

- Steel toe-cap to EN20345 (200 Joules)
- Padded collar and tongue
- Steel midsole for underfoot protection
- Dual density polyurethane sole
- Scuff cap

Upper Leather
Sizes 6, 7, 8, 9, 10, 11, 12
Colour Black, Brown
Code FA23400



3 Centurion Super Safety Boot

EN ISO 20345: 2004/A1: 2007 SB-P SRA

- Padded collar and tongue
- Breathable Cambrelle® lining
- Goodyear welted construction
- Steel toe-cap to EN20345 (200 Joules)
- Steel midsole for underfoot protection
- Front lace protector
- Sole slip resistant to SRA standard
- Ergonomically designed
- Oil resistant sole
- Heat resistant sole to 300°C

Upper Full grain leather
Sizes 6, 7, 8, 9, 10, 11, 12, 13
Colour Black
Code FD23115



3



4 Tradition Super Safety Boot

EN ISO 20345: 2004/A1: 2007 SB-P SRA

- Padded collar and tongue
- Thinsulate™ lined
- Breathable Cambrelle® lining
- Goodyear welted construction
- Steel toe-cap to EN20345 (200 Joules)
- Steel midsole for underfoot protection
- Front lace protector
- Oil resistant
- Sole resistant to 300°C
- Sole slip resistant to SRA standard
- Ergonomically designed

Upper Full grain leather
Sizes 6, 7, 8, 9, 10, 11, 12
Colour Tan
Code FD23100



4



1



2



1 Harley Safety Work Boot

EN ISO 20345:2004/A1:2007 SB-P SRA

- Certified to SB-P standard
- Steel toe-cap to EN20345 (200 Joules)
- Steel midsole for underfoot protection
- Sole slip resistant to SRA standard
- Cambrelle® inner lining

Upper Full grain oiled leather
Sizes 6, 7, 8, 9, 10, 11, 11.5, 12
Colour Brown
Code FD24000



2 Enfield Safety Dealer Boot

EN ISO 20345:2004/A1:2007 SB-P SRA

- Certified to SB-P standard
- Steel toe-cap to EN20345 (200 Joules)
- Steel midsole for underfoot protection
- Cambrelle® inner lining
- Sole slip resistant to SRA standard

Upper Full grain leather
Sizes 6, 7, 8, 9, 10, 11, 11.5, 12
Colour Brown
Code FD24010



3 Super Safety Dealer Boot

EN ISO 20345: 2004/A1: 2007 SB-P SRA

- Smooth leather dealer boot
- Elasticated side gusset
- Breathable padded quarter lining
- Rear leather puller
- Goodyear welted construction
- Lightweight rubber sole for comfort
- Full length padded insock
- Sole slip resistant to SRA standard
- Steel toe-cap to EN20345 (200 Joules)
- Steel midsole for underfoot protection
- Oil resistant sole

Upper Full grain leather
Sizes 6, 7, 8, 9, 10, 11, 12
Colour Black, Brown, Chestnut
Code FD22200



3

Brown

Black

Chestnut



4



5



4 Redland Super Safety Chukka Boot

EN ISO 20345: 2004 S1-P

- Quality leather ankle boot
- Padded collar
- Dual density polyurethane sole
- Steel toe-cap to EN20345 (200 Joules)
- Steel midsole for underfoot protection
- Sole resistant to oil

Upper Leather
Sizes 3, 4, 5, 6, 7, 8, 9, 10, 11, 12, 13, 14
Colour Black
Code FA23330



5 Dealer Super Safety Boot

EN ISO 20345: 2004 S1-P

- Antistatic and energy absorbent heel
- Dual density polyurethane sole
- Pull up loops
- Elasticated side gusset
- Steel toe-cap to EN20345 (200 Joules)
- Steel midsole for underfoot protection
- Sole oil and slip resistant

Upper Leather
Sizes 6, 7, 8, 9, 10, 11, 12
Colour Black
Code FA23345



6 Redland Scuffcap Safety Boot

EN ISO 20345:2004/A1:2007 S3 SRA

- Certified to S3 standard
- Double density polyurethane sole
- Steel toe-cap to EN20345 (200 Joules)
- Steel midsole for underfoot protection
- Polyurethane scuffguard to the toe

Upper Leather
Sizes 3, 4, 5, 5.5, 6, 7, 8, 9, 10, 11, 11.5, 12, 13, 14
Colour Black
Code FA23330SC



7 Clifton Super Safety Shoe

EN ISO 20345: 2004 S1-P

- Four eyelet shoe
- Padded collar
- Steel midsole for underfoot protection
- Slip resistant
- Oil resistant
- Steel toe-cap to EN20345 (200 Joules)

Upper Leather
Sizes 3, 4, 5, 6, 7, 8, 9, 10, 11, 12, 13, 14
Colour Black
Code FA13310



6



7

1



1 Oxford Super Safety Shoe

EN ISO 20345: 2004/A1: 2007 S1-P SRA

- Five eyelet shoe
- Breathable lining for extra comfort
- Full length padded insock with heel support cup
- Steel toe-cap to EN345 (200 Joules)
- Steel midsole for underfoot protection
- Dual density antistatic polyurethane sole
- Sole resistant to oil

Upper Full grain quality leather

Sizes 6, 7, 8, 9, 10, 11, 12

Colour Black

Code FA12350

2



2 Executive Super Safety Shoe

EN ISO 20345: 2004/A1: 2007 S1-P SRA

- Four eyelet shoe
- Breathable lining for extra comfort
- Full length padded insock with heel support cup
- Steel toe-cap to EN345 (200 Joules)
- Steel midsole for underfoot protection
- Dual density antistatic polyurethane sole
- Sole resistant to oil

Upper Full grain quality leather

Sizes 6, 7, 8, 9, 10, 11, 12

Colour Black

Code FA12365

3



3 Stockton Super Safety Trainer

ISO 20345: 2004/ A1: 2007 S1-P SRA

- Padded collar and tongue
- Dual density polyurethane sole
- Antistatic and energy absorbent heel
- Steel toe-cap to EN20345 (200 Joules)
- Steel midsole for underfoot protection
- Sole resists petrol and oil
- Sole slip resistant to SRA standard

Upper Leather and mesh

Sizes 6, 7, 8, 9, 10, 11, 12

Colour Black

Code FA13335

4



4 Sedona Super Safety Shoe

EN ISO 20345: 2004 S1-P

- Padded collar
- Slip resistant
- Antistatic
- Breathable lining
- Shock absorbent sole
- Steel midsole for underfoot protection
- Steel toe-cap to EN20345 (200 Joules)
- Double density PU sole

Upper Leather

Sizes 6, 7, 8, 9, 10, 11, 12

Colour Black

Code FD12230

Ladies Footwear



5 Verona Shoe

EN ISO 20345:2004/A1:2007 S3 SRA

- Composite toecap to EN20345 (200 Joules)
- Water resistant upper
- Non-metallic midsole for underfoot protection
- Antistatic sole
- Cemented rubber outsole
- Padded collar and tongue

Upper Nubuck cow leather

Sizes 3, 4, 5, 5.5, 6, 7, 8

Colour Black

Code FC9501



5



6 Verona Boot

EN ISO 20345:2004/A1:2007 S3 SRA

- Composite toecap to EN20345 (200 Joules)
- Water resistant upper
- Non-metallic midsole for underfoot protection
- Antistatic sole
- Cemented rubber outsole
- Padded collar and tongue

Upper Nubuck cow leather

Sizes 3, 4, 5, 5.5, 6, 7, 8

Colour Black

Code FC9505



6



7



7 Ottawa Safety Ladies Shoe

EN ISO 20345: 2004/A1: 2007 SB SRC

- Slip resistant sole to SRC sole standard
- Sole heat resistant to 300 degrees
- Padded tongue and collar
- Steel toe-cap to EN20345 (200 Joules)
- Cemented rubber and EVA outsole

Upper Suede

Sizes 3, 4, 5, 5.5, 6, 7, 8, 9

Colour Blue

Code FD13910



8 Ohio Ladies' Safety Trainer

EN ISO 20345: 2004 SB

- Padded collar and tongue
- Heat resistant sole
- Steel toe-cap to EN20345 (200 Joules)
- Slip resistant
- Cemented rubber and EVA outsole

Upper Microfibre

Sizes 3, 4, 5, 6, 7, 8, 9

Colour Black and Pink

Code FD13905



8



LAND
MASTER

Wellingtons



1



2



1 Landmaster Wellington Boot

EN ISO 20347:2004

- 40% lighter than Rubber or PVC
- Thermo-insulating: Cool in the Summer and Warm in the Winter
- Durable: lasts up to 4 times longer than than rubber or pvc
- Rear kick-off spur
- Greater slip resistance
- Moisture absorbing insoles

Material 100% polyurethane

Sizes 4, 5, 6, 7, 8, 9, 10, 11, 12, 13

Colour Green

Code FW91105



2 Safety Landmaster Wellington Boot

EN ISO 20345:2004/A1:2007 S5 SRA CI

- 40% lighter than Rubber or PVC
- Thermo-insulating: Cool in the Summer and Warm in the Winter
- Durable: lasts up to 4 times longer than than rubber or pvc
- Protective steel toecap and steel midsole
- Antistatic sole
- Rear kick-off spur
- Greater slip resistance

Material 100% polyurethane

Sizes 6, 7, 8, 9, 10, 11, 12

Colour Green

Code FW94105



3



3 Boot Insoles

- Replacement inner soles for styles FW91105 and FW94105
- Machine washable
- Non-slip

Material Foam

Sizes 4, 5, 6, 7, 8, 9, 10, 11, 12, 13

Colour Green

Code FZ7000



1 Super Safety Wellington

EN ISO 20345: 2004 S5

- PVC and nitrile rubber boot
- General industrial quality
- Steel toe-cap to EN20345 (200 Joules)
- Steel midsole for underfoot protection
- Anti-slip sole

Sizes 6, 7, 8, 9, 10, 11, 12

Colour Black

Code FW13105



2 Groundwater Super Safety Boot

EN ISO 20045: 2004/A1: 2007 S5 SRA

- PVC upper
- Nitrile rubber outsole
- Polyester fleece lined
- Two leather pull up loops
- Cleated sole
- Steel toe-cap
- Flexible steel midsole
- Sole slip resistant to SRA standard

Sizes 6, 7, 8, 9, 10, 11, 12

Colour Brown

Code FW13200



3 Pennine Boot

- PVC/nitrile rubber compound
- Hardwearing, strong, abrasive resistant sole

MEN'S

Sizes 6, 7, 8, 9, 10, 11, 12

Colour Green

Code FW11100

STYLE MAY CHANGE

LADIES'

Sizes 3, 4, 5, 6, 7

Colour Green

Code FW11200

JUNIOR

Sizes 12, 13, 1, 2

Colour Green

Code FW11300

3





1 Utility Sock

ONLY AVAILABLE IN OUTER CASE OF 48 PACKS

- Three pairs of socks per pack

Fabric White & Coloured: 75% combed cotton, 22% polyester, 3% elastane
 Grey: 70% combed cotton, 27% polyester, 3% elastane

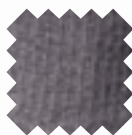
Sizes 41-45

Colour Assorted

Code DCK-11A



Black



Grey



Navy



Light Grey



2 Thermo Sock

ONLY AVAILABLE IN OUTER CASE OF 40 PACKS

- Two Pairs of socks per pack
- Thermal Socks
- Special twisted yarn of acrylic with cotton to ensure warm feet
- Very soft and comfortable to wear

Fabric 41% cotton, 41% acrylic, 15% polyester, 3% elastane

Sizes 41-45, 46-50

Colour Assorted

Code DCK-15A



Black



Grey



3 Strong Work Sock

ONLY AVAILABLE IN OUTER CASE OF 24 PACKS

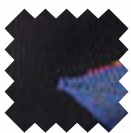
- Three pairs of socks per pack
- Full Cushioned Socks
- Reinforced heel and toe
- Comfort top
- Heavy socks to be worn in professional workwear shoes

Fabric 75% combed cotton, 22% polyester, 3% elastane

Sizes 41-45, 46-50

Colour Black

Code DCK-10A



Black



4 Industrial Work Sock

ONLY AVAILABLE IN OUTER CASE OF 36 PACKS

- Two Pairs of socks per pack
- Extra support in sole with reinforced heel and toe
- Soft lycra® used in leg for comfortable wearing
- Extra high comfort top
- Super thick combed cotton for perfect humidity control
- Very heavy socks perfect to wear in Industrial workwear boots

Fabric 78% combed cotton, 22% polyester, 2% elastane

Sizes 41-45

Colour Black

Code DCK-00001



Black



1



1 Cushion Crew Sock

ONLY AVAILABLE IN OUTER CASE OF 40 PACKS

- Five pairs of socks per pack
- Half Cushioned Sole
- Reinforced heel and toe
- Every day use in basic workwear shoes

Fabric 75% combed cotton, 22% polyester, 3% elastane

Sizes 41-45

Colour Black

Code DCK-00005



2 Flame Retardant Socks

EN 150 14116:2008

- One pair per pack
- Padded sock with blisterguard protection with Profilen
- Anti bacterial treatment
- Cushioned sole with reinforced heel and toe
- Ventilated construction aids moisture management
- Half calf length

Fabric 35% kennel®, 35% lenzing FR®, 17% nylon, 12% Profilen®, 1% lycra

Sizes One size

Colour Black

Code FR5001

2



3



Black

Grey

Navy

Light Grey



3 Cushion Crew Sock

ONLY AVAILABLE IN OUTER CASE OF 40 PACKS

- Five pairs of socks per pack
- Half Cushioned Sole
- Reinforced heel and toe
- Every day use in basic workwear shoes

Fabric White & Coloured: 75% combed cotton, 22% polyester, 3% elastane
 Grey: 70% combed cotton, 27% polyester, 3% elastane

Sizes 41-45, 46-50

Colour Assorted

Code DCK-06A



5 Boot Socket

- Ideal for keeping feet warm and dry inside wellington boots
- Unisex

Sizes 3-4, 5-6, 7-8, 9-10, 10-11, 12-13

Colour Black

Code FZ5000



5



4 Arctic Sock

ONLY AVAILABLE IN OUTER CASE OF 36 PACKS

- One pair of socks per pack
- 1.5 Tog Rating
- Thermal Winter Sock

Fabric 90% acrylic, 8% polyester, 2% elastane

Sizes 41-45

Colour Black

Code DCK-21A



6 Boot Insoles

- Replacement inner soles for styles FW91105 and FW94105
- Machine washable
- Non-slip

Material Foam

Sizes 4, 5, 6, 7, 8, 9, 10, 11, 12, 13

Colour Green

Code FZ7000



6



7 Boot Insoles

- Warm, washable insoles, compatible with all Dickies wellington boots

Sizes 6, 7, 8, 9, 10, 11, 12

Code FZ4000



7

1



1 HV Grip Glove (10 pack)

EN388:2003 2142

- Coated palm
- Elasticated cuff
- Rough finish over entire surface
- Antibacterial and anti-odour treatment
- Anatomical shape
- Seamless knit

Fabric 100% natural Latex coating
Polyester-cotton liner

Sizes M, L, XL

Colour Yellow

Code GL317PRO



2 Multi- Grip Glove (10 pack)

EN388:2003 2142

- Multi-purpose grip glove
- Coated palm
- Elasticated cuff
- Rough finish over entire surface
- Antibacterial and anti-odour treatment
- Anatomical shape

Fabric 100% natural Latex coating
Polyester-cotton liner

Sizes Green S, M, L, XL

Yellow M, L, XL

Code GL310

2



2





3



3 Re-Grip Glove (10 pack)

EN388:2003 2142

- Multi-purpose grip glove
- Coated palm, reinforced coating at thumb crotch
- Elasticated cuff
- Rough finish over entire surface
- Antibacterial and anti-odour treatment
- Anatomical shape

Fabric Polyester-cotton

Sizes M, L, XL

Colour Black

Code GL330PRO



4



4 Thermo Grip Glove (10 pack)

EN388:2003 2241

- Coated palm
- Elasticated cuff
- Rough finish over entire surface
- Antibacterial and anti-odour treatment
- Anatomical shape
- Seamless knit

Fabric 100% natural Latex coating
Polyester-cotton liner with internal fleece finish

Sizes S, M, L, XL

Colour Grey

Code GL451



5



5 Opt-Grip Glove (10 pack)

EN388:2003 2121

- Coated palm
- Elasticated cuff
- Rough finish over entire surface
- Without special treatment
- Anatomical shape
- Seamless knit

Fabric 100% natural Latex coating,
Seamless nylon liner

Sizes S, M, L

Colour Blue

Code GL340GAR



6



6 Xtra Grip Glove (10 pack)

EN388:2003 2142

- Extensive coating on knuckles
- Elasticated cuff
- Rough finish over entire surface
- Antibacterial and anti-odour treatment
- Anatomical shape
- Seamless knit

Fabric 100% natural Latex coating

Sizes M, L, XL

Colour Grey/Blue

Code GL305PRO

1



1 Foam Grip (10 pack)

EN388:2003 3121

- Coated palm
- Elasticated cuff
- Foam embossed finish
- Without special treatment
- Anatomical shape
- Seamless knit

Fabric Foam nitrile coating, nylon liner

Sizes M, L, XL

Colour Grey

Code GL380PRO



2 Argon Skytec Glove (pair)

EN388:1994
EN511

- Unique HPT foam 3/4 coating remains flexible to temperatures as low as -50°C
- Breathable two-layer insulated liner
- Excellent grip in both the wet and the dry
- Anatomically designed for comfort and fit

Fabric 3/4 coating of HPT Foam
Twin seamless insulated nylon

Sizes L, XL

Colour Black

Code GL8002



3 Nitrile Foam Grip Glove (10 pack)

EN388:2003 4121

- Fully coated, extra coating on palm
- Reinforced knit cuff, scalloped edge
- Standard finish
- Without special treatment
- Anatomical shape
- Seamless knit

Fabric Foam nitrile coating, nitrile liner

Sizes M, L, XL

Colour Black

Code GL377PRO



4 Grip Glove (10 pack)

EN388:2003 4121

- Coated palm
- Elasticated cuff
- Standard finish
- Without special treatment
- Anatomical shape
- Seamless knit

Fabric Nitrile coating, nylon liner

Sizes M, L, XL

Colour Black, White

Code GL370PRO

5



5 Thornmaster Glove (10 pack)

EN388:2003 4231

- Coated palm
- Elasticated cuff
- Rough finish over entire surface
- Antibacterial and anti-odour treatment
- Anatomical shape
- Seamless knit

Fabric 100% natural Latex coating
Polyester-cotton liner

Sizes S, M, L, XL

Colour Green

Code GL350GAR

6



6 KV1 Cut Protector (10 pack)

EN388:2003 3444

- Coated palm
- Elasticated cuff
- Rough finish over entire surface
- Antibacterial and anti-odour treatment
- Kevlar fibre
- Anatomical shape

Fabric 100% natural Latex coating,
Kevlar liner

Sizes M, L, XL

Colour Blue

Code GL320PRO

7



7 Cut Resistant Glove (10 pack)

EN388:2003 4342

- Coated palm
- Elasticated cuff
- Standard finish
- Without special treatment
- High performance polyethylene
- Anatomical shape

Fabric Polyethylene coating, HPPE liner

Sizes M, L, XL

Colour Grey

Code GL541PRO

8



8 Floreo Glove (12 pack)

- Coated palm
- Elasticated cuff
- Standard finish
- Without special treatment
- Anatomical shape
- Seamless knit

Fabric Nitrile coating, nylon liner

Sizes S, M, L

Colour Pink

Code GL370GAR



1 Gripper Glove

- Knitted glove with PVC criss-cross pattern for extra grip

Fabric 70% acrylic, 30% polyester

Sizes One size

Colour Orange

Code GL8001



1



2



2 Rigger Glove

- Leather palm and finger tips
- Leather vein and knuckle protectors
- Elasticated back

Fabric Cotton canvas and leather

Sizes One size

Code GL52002

3



3 Lined Leather Glove

Quality leather gloves with a thermal insulation.

- Thinsulate™ lined for extra warmth
- Keystone thumb for mobility
- Hemmed cuff
- Elasticated wristband

Fabric Premium goatskin with lanolin

Sizes M, L, XL

Code GL0200

4



4 Performance Gloves

Exceptional work gloves offering dexterity and an excellent grip.

- Stretch nylon fabric back
- Goat grain leather reinforced palm
- Goat grain leather on knuckle area
- Neoprene wrist with velcro fastening

Fabric Leather

Sizes M, L, XL

Code GL0400

5



5 Unlined Leather Glove

Made from premium goatskin, these leather work gloves are tough and hardwearing.

- Keystone thumb for mobility
- Hemmed cuff
- Elasticated wristband

Fabric Premium goatskin

Sizes M, L, XL

Code GL0300

6



6 Super Grip Glove

- Polyester fabric, with latex palm
- Knitted glove construction
- Latex to palm and fingers for superior grip

Fabric Polyester fabric, latex palm

Sizes One size

Code GL0800

7



7 Thermal Glove

- Thermal insulated glove
- Knitted glove

Fabric 100% acrylic, Thinsulate™ lining

Sizes One size

Colour Black

Code GL55030

8



8 Glove Carton (20 pack)

- Sold in pack of 20 pairs
- Pack consists of 12 black pairs and 8 grey pairs

Fabric 100% polyester fleece, Thinsulate™ lining

Sizes One size

Colour Assorted

Code GL8000



1 Trapper Hat

- Warm fleece and fur lined hat
- Adjustable ear warmers

Fabric 100% acrylic

Sizes One size

Colour Black

Code HA8001



2 Knitted Beanie Hat

- Beanie style hat
- Dickies print to the front

Fabric 100% cotton

Sizes One size

Colour Black

Code HA140



3 Ranger Hat

- Wide brim
- Adjustable chin strap

Fabric 100% cotton

Sizes One size

Colour Stone

Code HA300



6 Thinsulate Watch Cap

- Knitted watch cap
- Thinsulate™ lined
- Plastic hanging hook attached

Fabric 100% knitted acrylic

Sizes One size

Colour Black, Navy

Code HA180



Black



Navy

5



5 DockerH at

- Anti-pilling fleece hat
- Plastic hanging hook attached

Fabric 100% polyester fleece

Sizes One size

Colour Black

Code HA100

6





1



1 Beanie Carton (24 pack)

- Sold in pack of 24
- Assorted styles and colours

Fabric 100% acrylic knitted double layer - 53gsm
Sizes One size
Colour Assorted
Code HA8000



2



2 Baseball Cap Carton (24 pack)

- Sold in pack of 24

Fabric 100% acrylic
Sizes One size
Colour Assorted
Code HA8002



3



3 Winten Neck Gaiter

- Polyester Fleece Neck Gaiter
- Toggle adjuster

Fabric 100% polyester fleece
Sizes One size
Colour Black
Code TH8000



4

4 Dickies Canvas Belt

A fashionable, canvas belt with a metal buckle bearing Dickies' distinctive, horseshoe logo.

- Dickies logo on gripper metal buckle

Fabric 100% polyester webbing

Sizes One size

Colour Black

Code BE500

5 Dickies Leather Belt

- Six hole belt with feather end
- Nickel finish steel buckle
- Dickies logo stamped to the feather end

Fabric Split leather

Sizes M, L, XL

Colour Black

Code BE100

5



Personal Protection Equipment



1 PE Coated Disposable Coverall

- Polyethylene coated white disposable coverall
- Elasticated hood, wrist and ankles
- Nylon zip front

Sizes L, XL
Colour White
Code SA4061



2 Gel Kneepads

EN14404:2004+A1

- Designed to be worn externally
- Fixed in place with velcro fastened strap

Material Outer fabric 100% polyester 600D
 Securing strap 100% polyester
 Outer shell material PVC

Sizes One size
Code SA8900

2



3 Back Support Belt

- Belt provides support to lower back area during lifting
- Adjustable elasticated braces and side panels
- Inner ribs to rear panel provide additional support to the lower back during lifting
- Velcro closure

Material Back belt 100% polyester
 Elasticated braces 100% nylon

Sizes M: 32" - 38", L: 38" - 47", XL: 46" - 56"
Colour Black
Code SA8902

3



4 Dickies Knee Pads

EN14404

- Lightweight and comfortable
- Flexible cushioned knee pads easily inserted into Dickies coverall and trouser pouches

Material Bi-density vinyl acetate co-polymer

Sizes One size
Colour Black
Code SA66

4





5



5 Safety Helmet

EN397

- Six point suspension harness
- Ratchet design for quick size adjustment
- Internal sweat pad to the brow

Material Shell: Polypropylene/ABS
Internal nylon harness

Sizes One size

Colour White, Yellow

Code SA8402

6



6 Bump Cap

EN812:1997

- Baseball cap with internal bump guard
- Internal foam pad for comfort
- Velcro adjuster to rear of baseball cap

Material Inner shell made from ABS
Outer baseball cap 100% cotton

Sizes One size

Colour Black

Code SA8403

7



7 Safety Goggles

EN166:2001 3 4 9 BT

EN170:2003

- Lightweight full vision safety goggle
- Non-vented
- Adjustable wide elastic strap with pivoting buckle
- Lenses have anti-scratch and anti-fog coating

Material Polycarbonate lenses, PVC frame

Sizes One size

Colour Clear

Code SA8200



1



1 Cobalt Spec (Box of 10)

EN166:2001 FT
EN170:2003

- Safety spectacles with insert for prescription lenses
- Lenses have an anti-scratch and anti-fog coating
- Soft foam browguard
- Comes complete with pouch and cord

Material Polycarbonate lenses, nylon frame

Sizes One size

Colour Clear

Code SA8217



2



2 Neon Spec (Box of 10)

EN166:2001 FT
EN170:2003

- Single piece lens provides a large field of vision
- Lenses have an anti-scratch and anti-fog coating
- Adjustable side arms for improved fit

Material Polycarbonate lenses, nylon frame

Sizes One size

Colour Clear

Code SA8205



3



3 Coverspec (Box of 10)

EN166:2001 FT
EN170:2003

- Cover-spectacle offering a perfect fit over prescription glasses
- Lenses have an anti-scratch and anti-fog coating
- Adjustable side arms for improved fit
- Pivoting arms for improved fit
- Ergonomic design

Material Polycarbonate lenses, nylon/polycarbonate frame

Sizes One size

Colour Clear

Code SA8213



4



4 Welders Spec (Box of 10)

EN166:2001 FT
EN169:2003

- Safety spectacles suitable for welding
- Lenses have an anti-scratch and anti-fog coating
- Adjustable side arms for improved fit
- Pivoting arms for improved fit
- Lateral protection
- Comes complete with pouch and cord

Material Polycarbonate lenses, nylon frame

Sizes One size

Colour Green

Code SA8215



5 Oxygen Spec (Box of 10)

EN166:2001 FT
EN170:2003
EN172:1994

- Stylish lightweight general purpose safety spectacles
- Lenses have an anti-scratch and anti-fog coating
- Slim flexible arms provide comfortable fit
- Perfect fit when worn with safety helmets and ear defenders

Material Polycarbonate lenses, polycarbonate frame

Sizes One size

Colour Amber, Clear, Smoke

Code SA8201



6 Carbon Spec (Box of 10)

EN166:2001 FT
EN170:2003

- Lightweight and modern
- Lenses have an anti-scratch and anti-fog coating
- Pivoting arms for improved fit
- Soft nose pad for greater comfort
- Lateral protection

Material Polycarbonate lenses, nylon frame

Sizes One size

Colour Clear, Smoke

Code SA8203



7 Xenon Spec (Box of 10)

EN166:2001 FT
EN170:2003
EN172:1994

- Lightweight with modern styling
- Lenses have an anti-scratch and anti-fog coating
- Soft tips to arms for comfortable fit
- Soft nose pad for greater comfort

Material Polycarbonate lenses
Nylon/TPE frame

Sizes One size

Colour Smoke

Code SA8207



8 Overspec (Box of 10)

EN166:2001 FT
EN170:2003

- Single piece lens provides a large field of vision
- Lenses have an anti-scratch and anti-fog coating
- Suitable to be worn over spectacles
- Suitable for use as visitors spectacle

Material Polycarbonate lenses
Polycarbonate frame

Sizes One size

Colour Clear

Code SA8211



9 Radon Spec (Box of 10)

EN166:2001 FT
EN170:2003
EN172:1994

- Lightweight with modern styling
- Lenses have an anti-scratch and anti-fog coating
- Soft tips to arms for comfortable fit
- Soft nose pad for greater comfort

Material Polycarbonate lenses
Nylon/TPE frame

Sizes One size

Colour Smoke

Code SA8209



1



1 Ear Defenders 28.5db

EN352-1:2002

- Foldaway ear defenders with adjustable headband
- SNR : 28.5db

Material HIPS ear cups, PVC cushion to cups, POM headband

Sizes One size

Code SA8501



2



2 Ear Defenders 25db

EN352-1:2002

- Lightweight ear defenders with adjustable headband
- Headband with soft foampad for comfort
- Domed cups with soft porous foam filled cushions
- SNR : 25db

Material ABS ear cups, PVC cushion to cups, POM headband

Sizes One size

Code SA8500



3 Soft Earplugs (x5 pairs)

EN352-2:2002

- Soft foam earplugs
- SNR : 37db

Material Polyurethane foam ear plugs

Sizes One size

Colour Orange

Code SA8503



4 Soft Earplugs & Cord (x2 pairs)

EN352-2:2002

- Soft foam earplugs with connecting PVC cord
- SNR : 37db

Material Polyurethane foam ear plugs

Sizes One size

Colour Orange

Code SA8504



5 Banded Earplugs

EN352-2:2002

- Soft foam earplugs attached to adjustable neckband
- Comes packed with 4 replacement earplugs
- Comfortable and lightweight
- SNR : 26db

Material Polyurethane foam ear plugs, Polypropylene neck band

Sizes One size

Code SA8502



5

6



6 Safety Helmet Kit

EN166:2001 FT
EN169:2003

Protection kit consists of:

- Safety helmet to EN397 with 4 point suspension harness and ratchet adjuster
- Side attached ear defenders to EN352-3
- Wire mesh face shield to EN1731
- Internal sweat pad to the brow

Material Helmet: Polypropylene/ABS
Face shield: Steel

Sizes One size

Code SA8400

7



7 Face Protection Kit

Protection kit consists of:

- Brow guard with ratchet adjuster
- Ear Defenders to EN352-1, SNR:25db
- Wire mesh face shield to EN1731
- Internal sweat pad to the browguard

Material Browguard: Polypropylene/nylon
Face shield: Steel

Sizes One size

Code SA8401



8 Safety Visor (Pack of 2)

EN166

- Visor size 8" x 15.5"
- Fits Dickies styles SA8400 and SA8401

Material Polycarbonate

Sizes One size

Colour Clear

Code SA8220

8





1 Workers Protection Kit

Protection kit contains:

- Adjustable ear defenders to EN352-1, SNR:27db
- FFP1 respirator to EN149:2001
- Safety goggles to EN166

Material Goggles: PVC frame with Polycarbonate lenses
 Ear defenders: ABS ear cups and POM headband
 Respirator: Polypropylene outer material with polypropylene inner filter

Sizes One size

Code SA8901



1



2 A1P3 Safety Respirator

EN140:1998

- Designed to fit the contours of the users face
- Non-return exhaust valve to reduce risk of wearer fatigue
- Odour free and non-allergenic
- Constructed using medical grade materials

Material Face mask constructed from TPE

Sizes One size

Code SA8003



2



3 P3 Safety Respirator

EN140:1998

- Designed to fit the contours of the users face
- 4-point adjustable lightweight head strap
- Non-return exhaust valve to reduce risk of wearer fatigue
- Odour free and non-allergenic
- Constructed using medical grade materials

Material Face mask constructed from TPE

Sizes One size

Code SA8000



3



4 A1P3 Replacement Filter (Pack of 6 pairs)

EN14387:2004+A1:2008

- Replacement particulate and carbon filters for respirator style SA8003
- Supplied in display box containing 6 pairs of filters pre-packed in polybags

Material Composite HESPA filtration media

Sizes One size

Code SA8004



4



5



5 P3 Replacement Filter (Pack of 10 pairs)

EN143:2000+A1:2006

- Replacement HESPA filters for respirator style SA8000
- Supplied in display box containing 10 pairs of filters pre-packed in polybags

Material Composite HESPA filtration media

Sizes One size

Code SA8001



6 FFP3 Respirator (Pack of 2)

EN149:2001+A1:2009

- Single use respirator with valve
- Sold as a pack containing 2 masks
- Protects against non-toxic, low to average toxicity and high toxicity solid and liquid aerosols
- Pre-shaped nose cushion
- Metal free

Material Polypropylene outer material
Polypropylene inner filter

Sizes One size

Code SA8008



6



7 FFP2D Respirator (Pack of 3)

EN149:2001+A1:2009

- Single use respirator with valve
- Sold as a pack containing 3 masks
- Protects against non-toxic and low to average solid and liquid aerosols
- Pre-shaped nose cushion
- Metal free

Material Polypropylene outer material
Polypropylene inner filter

Sizes One size

Code SA8007



7



8 FFP1D Respirator (Pack of 5)

EN149:2001+A1:2009

- Single use respirator
- Sold as a pack containing 5 masks
- Protects against non-toxic solid and liquid aerosols
- Pre-shaped nose cushion
- Metal free

Material Polypropylene outer material
Polypropylene inner filter

Sizes One size

Code SA8006



8

Directory

| | | | | | |
|------------------|--|-------|------------------|--------------------------------------|-----|
| BE100 | Dickies Leather Belt | 175 | FA23330 | Redland Super Safety Chukka Boot | 155 |
| BE500 | Dickies Canvas Belt | 175 | FA23330SC | Redland Scuffcap Safety Boot | 155 |
| BW11025 | Professional Combat Bodywarmer | 28 | FA23333 | Antrim Super Safety Boot | 133 |
| BW11400 | Outland Bodywarmer | 26/28 | FA23345 | Dealer Super Safety Boot | 155 |
| BW11700 | Utility Vest | 28 | FA23350 | Super Safety Rigger Boot (Lined) | 147 |
| BW11800 | Townsend Interactive Bodywarmer | 42 | FA23355 | Super Safety Rigger Boot (Unlined) | 147 |
| BW17000 | Padded Gilet | 13 | FA23370 | Super Safety Scuff Cap Rigger | 147 |
| DCK-00001 | Industrial Work Sock | 163 | FA23380A | Fury Super Safety Hiker | 151 |
| DCK-00005 | Cushion Crew Sock | 164 | FA23385A | Storm Super Safety Trainer | 151 |
| DCK-06A | Cushion Crew Sock | 165 | FA23400 | Berwick Super Safety Hiker | 153 |
| DCK-10A | Strong Work Sock | 163 | FA23500 | Severn Super Safety Boot | 145 |
| DCK-11A | Utility Sock | 162 | FC9500 | Murcia Trainer | 136 |
| DCK-15A | Thermo Sock | 162 | FC9501 | Verona Shoe | 157 |
| DCK-21A | Arctic Sock | 165 | FC9502 | Rushden Trainer | 141 |
| DT1000 | Ergo Trouser | 5 | FC9503 | Murcia Boot | 136 |
| DT2000 | Anvil Polo Shirt | 6 | FC9504 | Cordoba Boot | 136 |
| DT3000 | Gasket Hoody | 5 | FC9505 | Verona Boot | 157 |
| DT3001 | Torque Hoody | 10 | FC9506 | Urban Boot | 132 |
| DT5000 | Klaxon Shirt | 8 | FC9507 | Urban Hi Boot | 131 |
| DT6000 | Galvanise T-shirt | 11 | FC9508 | Gironde Trainer | 139 |
| DT6001 | Forge T-shirt | 5 | FC23340 | Fractus Super Safety Boot | 139 |
| DT7000 | Tundra Gilet | 8 | FC23344 | Alto Super Safety Shoe | 139 |
| DT8000 | Alloy Beanie | 6 | FC23366 | Arcus Super Safety Shoe | 139 |
| DT8001 | Oxide Beanie | 6 | FC23470 | Granite Super Safety Boot | 140 |
| DT8002 | Torsion Baseball Cap | 6 | FC23475 | Teton Super Safety Trainer | 140 |
| DT281000 | Contrast T-shirt | 11 | FC23480 | Logan Super Safety Sandal | 140 |
| DT299000 | Warrington Shirt | 11 | FC23530 | Tiber Super Safety Trainer | 137 |
| DU336 | Weatherford Trousers | 13 | FC23540 | Arno Boot | 138 |
| EH26000 | Eisenhower Ladies' Multi-pocket Trousers | 103 | FC23600 | Parma Safety Trainer | 138 |
| EH26800 | Eisenhower Multi-pocket Trousers | 53 | FC23700 | Elbe Safety Trainer | 134 |
| EH30000 | Eisenhower Pro Multi-pocket Trouser | 49 | FC23710 | Mosel Safety Boot | 134 |
| EH60000 | Eisenhower Pilot Jacket | 51 | FD9200 | Dalton Trainer | 138 |
| EH63700 | Eisenhower Bonded Fleece | 52 | FD9201 | Dalton Boot | 138 |
| EH70000 | Eisenhower Waterproof Jacket | 52 | FD9202 | Calder Boot | 143 |
| EH70050 | Eisenhower Pro Pilot Jacket | 51 | FD9203 | Munro Boot | 145 |
| EH89000 | Eisenhower Fleece Pullover | 52 | FD12230 | Sedona Super Safety Shoe | 156 |
| FA9001 | Donegal Boot | 132 | FD13905 | Ohio Ladies' Safety Trainer | 157 |
| FA12350 | Oxford Super Safety Shoe | 156 | FD13910 | Ottawa Safety Ladies Shoe | 157 |
| FA12365 | Executive Super Safety Shoe | 156 | FD22200 | Super Safety Dealer Boot | 154 |
| FA13310 | Clifton Super Safety Shoe | 155 | FD23100 | Tradition Super Safety Boot | 153 |
| FA13335 | Stockton Super Safety Trainer | 156 | FD23115 | Centurion Super Safety Boot | 153 |
| FA23200 | Cleveland Super Safety Boot | 152 | FD23305 | Thames Super Safety Waterproof Hiker | 145 |
| | | | FD23310 | Medway Super Safety Hiker | 144 |
| | | | FD23315 | Tamar Super Safety Boot | 144 |

| | | | | | |
|-----------------|-----------------------------------|---------|-----------------|--|--------|
| FD23378 | Kevlar® Flame Retardant Boot | 149 | GL8002 | Argon Skytec Glove (pair) | 168 |
| FD23390 | Idaho Safety Shoe | 140 | GL52002 | Rigger Glove | 170 |
| FD24000 | Harley Safety Work Boot | 154 | GL55030 | Thermal Glove | 171 |
| FD24010 | Enfield Safety Dealer Boot | 154 | HA100 | Docker Hat | 173 |
| FD25000 | Industrial Rigger Boot | 146 | HA140 | Knitted Beanie Hat | 172 |
| FN23600 | Welton Non-Safety Boot | 129 | HA180 | Thinsulate Watch Cap | 173 |
| FN23700 | Trinity Non-Safety Boot | 129 | HA300 | Ranger Hat | 172 |
| FR4869 | Dickies Proban® Coverall | 121 | HA8000 | Beanie Carton (24 pack) | 174 |
| FR4870 | Proban® Safety Coverall | 120 | HA8001 | Trapper Hat | 172 |
| FR5001 | Flame Retardant Socks | 164 | HA8002 | Baseball Cap Carton (24 pack) | 174 |
| FR5002 | Flame Retardant Thermals Set | 125 | IN1001 | Trouser | 57 |
| FR5003 | Flame Retardant Polo Shirt | 125 | IN4001 | Bib and Brace | 57 |
| FR5055 | Firechief Lightweight Coverall | 122 | IN7001 | Jacket | 57 |
| FR5060 | Firechief Coverall | 122 | IN30010 | Jacket | 59 |
| FW11100 | Pennine Boot MEN'S | 161 | IN30020 | Vest | 61 |
| FW11200 | Pennine Boot LADIES' | 161 | IN30030 | Trousers | 60 |
| FW11300 | Pennine Boot JUNIOR | 161 | IN30040 | Bib & Brace | 60 |
| FW13105 | Super Safety Wellington | 160 | IN30050 | Shorts | 61 |
| FW13200 | Groundwater Super Safety Boot | 160 | JW7000 | Argan Fleece | 20 |
| FW91105 | Landmaster Wellington Boot | 159 | JW7001 | Polden Jacket | 24 |
| FW94105 | Safety Landmaster Wellington Boot | 159 | JW7002 | Hudson Jacket | 25 |
| FZ4000 | Boot Insoles | 165 | JW23500 | Lewis Jacket | 29 |
| FZ5000 | Boot Socket | 165 | JW23700 | Cambridge Jacket | 29 |
| FZ7000 | Boot Insole | 159/165 | JW30000 | Melbourn Jacket | 23 |
| GL305PRO | Xtra Grip Glove (10 pack) | 167 | JW80000 | Foxton Ladies Jacket | 21/102 |
| GL310 | Multi- Grip Glove (10 pack) | 166 | JW81700 | Padded Fleece Jacket | 19 |
| GL317PRO | HV Grip Glove (10 pack) | 166 | JW82015 | Seville Fleece | 19 |
| GL320PRO | KV1 Cut Protector | 169 | JW83500 | Microfleece Pullover | 19 |
| GL330PRO | Re-Grip Glove (10 pack) | 167 | JW84400 | Microfleece Jacket | 17 |
| GL340GAR | Opt-Grip Glove (10 pack) | 167 | JW84420i | Tampa Interactive Fleece | 41 |
| GL350GAR | Thornmaster Glove (10 pack) | 169 | JW84950 | Softshell Jacket | 41 |
| GL370GAR | Showa Floreo 370 (12 pack) | 169 | JW86000 | Aspen Lightweight Jacket | 40 |
| GL370PRO | Grip Glove (10 pack) | 168 | JW86500 | Cabot Waterproof Jacket | 40 |
| GL377PRO | Nitrile Foam Grip Glove (10 pack) | 168 | JW88800 | Orwell Softshell Jacket | 21 |
| GL380PRO | Foam Grip (10 pack) | 168 | JW90000 | Arndale Jacket | 24 |
| GL451 | Thermo Grip Glove (10 pack) | 167 | JW96000 | Blake Jacket | 33 |
| GL541PRO | Cut Resistant Glove (10 pack) | 169 | KN22100 | Commando Crew Neck Sweater | 96 |
| GL0200 | Lined Leather Glove | 171 | SA66 | Dickies Knee Pads | 176 |
| GL0300 | Unlined Leather Glove | 171 | SA4061 | PE Coated Disposable Coverall | 176 |
| GL0400 | Performance Gloves | 171 | SA7000 | Waterproof Safety Coverall | 106 |
| GL0800 | Super Grip Glove | 171 | SA8000 | P3 Safety Respirator | 182 |
| GL8000 | Glove Carton (20 pack) | 171 | SA8001 | P3 Replacement Filter (Pack of 10 pairs) | 183 |
| GL8001 | Gripper Glove | 170 | | | |

| | | | | | |
|-----------------|---|-----|----------------|---|--------|
| SA8003 | A1P3 Safety Respirator | 182 | SA42050 | GO/RT Bomber Jacket | 114 |
| SA8004 | A1P3 Replacement Filter (Pack of 6 pairs) | 183 | SA42075 | GO/RT Polo Shirt | 115 |
| SA8006 | FFP1D Respirator (Pack of 5) | 183 | SA45000 | GO/RT Polycotton Coverall | 117 |
| SA8007 | FFP2D Respirator (Pack of 3) | 183 | SA45010 | GO/RT Polycotton Safety Trousers | 116 |
| SA8008 | FFP3 Respirator (Pack of 2) | 183 | SA45025 | GO/RT Polycotton Safety Jacket | 116 |
| SA8200 | Safety Goggles | 177 | SH3000 | Fairfield Hoody | 95 |
| SA8201 | Oxygen Spec (Box of 10) | 179 | SH3001 | Ashford Hoody | 95 |
| SA8203 | Carbon Spec (Box of 10) | 179 | SH3002 | Baywood Hoody | 95 |
| SA8205 | Neon Spec (Box of 10) | 178 | SH5000 | Portland Shirt | 86 |
| SA8207 | Xenon Spec (Box of 10) | 179 | SH5001 | Chorley Shirt | 86 |
| SA8209 | Radon Spec (Box of 10) | 179 | SH5004 | Dickies Branded T-shirts, 5-pack | 93 |
| SA8211 | Overspec (Box of 10) | 179 | SH11125 | Crew Neck Sweatshirt | 97 |
| SA8213 | Coverspec (Box of 10) | 178 | SH11150 | V-neck Sweatshirt | 97 |
| SA8215 | Welders Spec (Box of 10) | 178 | SH11300 | Hooded Sweatshirt | 96 |
| SA8217 | Cobalt Spec (Box of 10) | 178 | SH21100 | Long Sleeve Polo Shirt | 91 |
| SA8220 | Safety Visor (Pack of 2) | 181 | SH21220 | Short Sleeve Polo Shirt | 90 |
| SA8400 | Safety Helmet Kit | 181 | SH21600 | Ladies' Fitted Polo Shirt | 101 |
| SA8401 | Face Protection Kit | 181 | SH33100 | Long Sleeve T-shirt | 91 |
| SA8402 | Safety Helmet | 177 | SH34225 | T-shirt | 90 |
| SA8403 | Bump Cap | 177 | SH34990 | Dickies Branded T-shirts, 3-pack | 91 |
| SA8500 | Ear Defenders 25db | 180 | SH36070 | Dickies Branded T-shirts, 5-pack | 93 |
| SA8501 | Ear Defenders 28.5db | 180 | SH64200 | Men's Oxford Weave Shirt (Long sleeve) | 85 |
| SA8502 | Banded Earplugs | 180 | SH64250 | Men's Oxford Weave Shirt (Short sleeve) | 85 |
| SA8503 | Soft Earplugs (x 5 pairs) | 180 | SH64300 | Ladies' Oxford Weave Shirt (Long sleeve) | 85/102 |
| SA8504 | Soft Earplugs & Cord (x 2 pairs) | 180 | SH64350 | Ladies' Oxford Weave Shirt (Short sleeve) | 85/102 |
| SA8900 | Gel Kneepads | 176 | SH81460 | Meadow Shirt | 89 |
| SA8901 | Workers Protection Kit | 182 | SH81500 | Tattersal Shirt | 89 |
| SA8902 | Back Support Belt | 176 | SH81525 | Chaser Shirt | 89 |
| SA12005 | Highway Safety Trousers | 109 | SH81700 | Castleford Shirt | 89 |
| SA22007 | Children's Safety Waistcoat | 110 | SH82000 | Flannel Check Shirt | 13 |
| SA22010 | Highway Safety Waistcoat | 110 | TH8000 | Winten Neck Gaiter | 174 |
| SA22020 | Technical Safety Waistcoat | 110 | TH50000 | Long Johns | 16 |
| SA22032 | High Visibility Lined Fleece Jacket | 111 | TH50100 | Base Layer Vest | 16 |
| SA22042 | High Visibility Waterproof Lightweight Jacket | 109 | TJ350 | Duck Sherpa Lined Hooded Jacket | 12 |
| SA22045 | Motorway Safety Jacket | 109 | TR14000 | Combat Trousers | 79 |
| SA22050 | High Visibility Bomber Jacket | 107 | TR14025 | Combat Trousers (Camouflage only) | 79 |
| SA22075 | High Visibility Safety Polo Shirt | 111 | TR14050 | Combat Shorts | 79 |
| SA22077 | High Visibility Long Sleeve Polo Shirt | 111 | TR41500 | Reaper Trousers | 80 |
| SA22080 | High Visibility Safety T-shirt | 113 | TR41501 | Winter Reaper Trousers | 80 |
| SA22090 | High Visibility Safety Hooded Sweatshirt | 113 | WD200 | Redhawk Warehouse Coat | 78 |
| SA30310 | Highway Safety Waistcoat | 110 | WD201 | Redhawk Food Industry Warehouse Coat | 78 |
| SA35015 | High Visibility Polycotton Trousers | 113 | WD250 | Redhawk Tabard | 78 |
| SA40310 | GO/RT Waistcoat | 116 | WD600 | Redhawk Bib and Brace | 75 |
| SA40320 | GO/RT Technical Waistcoat | 116 | | | |
| SA42005 | GO/RT Overtrousers | 115 | | | |
| SA42045i | GO/RT Parka Jacket | 115 | | | |



| | | |
|---------------------------------|--|------|
| WD650 | Painters' Bib and Brace | 54 |
| WD814 | Redhawk Men's Action Trousers | 76 |
| WD824 | Painters' Trousers | 54 |
| WD834 | Redhawk Cargo Shorts | 77 |
| WD855 | Redhawk Ladies' Trousers | 103 |
| WD864R / WD864T / WD864U | Redhawk Trousers | 77 |
| WD884 | Redhawk Super Work Trousers | 76 |
| WD954 | Redhawk Jacket | 77 |
| WD1000 | Boston Jean | 9/81 |
| WD1693 | Dickies Stonewashed Work Jeans | 81 |
| WD2279 | Cotton Coverall | 68 |
| WD2279LW | Lightweight Cotton Coverall | 68 |
| WD2299 | Short Sleeved Cotton Coverall | 68 |
| WD2360R | Dickies Lined Coverall | 69 |
| WD4819R/WD4819T | Redhawk Economy Stud Front Coverall | 73 |
| WD4829 | Redhawk Stud Front Coverall | 73 |
| WD4839 | Redhawk Zip Front Coverall | 74 |
| WD4839W | Ladies' Redhawk Zip Front Coverall | 101 |
| WD4839J | Redhawk Junior Zip Front Coverall | 75 |
| WD4879R/WD4879T | Dickies Deluxe Coverall | 69 |
| WD4900 | Meuse Jacket | 64 |
| WD4910 | GDT 290 Jacket | 65 |
| WD4930 | GDT 290 Trousers | 65 |
| WD4970 | GDT 210 Jacket | 64 |
| WD4975 | GDT 210 Trousers | 63 |
| WD4979 | GDT 210 Shorts | 64 |
| WD5025 | Firechief Lined Coverall | 124 |
| WD5075 | Firechief Antistatic Coverall | 124 |
| WD6000 | EZ-ON Coverall | 70 |
| WP7003 | Mission Kids Coverall | 31 |
| WP10000 | Vermont Waterproof Trousers | 34 |
| WP10050 | Vermont Waterproof Suit | 34 |
| WP11000 | Childrens' Vermont Waterproof Suit | 35 |
| WP15000 | Waterproof Padded Coverall | 31 |
| WP70000 | Exmoor Suit | 34 |
| WP71000 | Exmoor Suit Trousers | 34 |
| WP50000 | Raintite Jacket | 35 |
| WP51000 | Raintite Trouser | 35 |
| WX7000 | Brendon Gilet | 24 |
| WX11102 | Westfield Wax Jacket | 32 |
| WX11140 | Camouflage Wax Jacket | 26 |
| WX14100 | Westfield Wax Leggings | 32 |
| WX15100 | Westfield Wax Trousers | 32 |
| WX16140 | Camouflage Wax Trouser | 26 |



SIZING GUIDE

Coveralls and Trousers

The majority of Dickies coveralls and trousers come in two leg lengths, Regular and Tall (though actual sizes vary from garment to garment). The waist and chest measurements of these garments are measured in 2" increments.

XS XXXXL

| Size | XS | S | M | L | XL | XXL | XXXL | XXXXL |
|--------------------|---------|---------|---------|---------|---------|---------|---------|---------|
| Approx chest (ins) | 32 – 34 | 36 – 38 | 40 – 42 | 44 – 46 | 48 – 50 | 52 – 54 | 56 – 58 | 60 – 62 |

TROUSERS

| Size | S | M | L | XL | XXL |
|--------------------|---------|---------|---------|---------|---------|
| Approx waist (ins) | 30 – 32 | 34 – 36 | 38 – 40 | 42 – 44 | 46 – 48 |

SHIRTS

| Collar (cm/ins) | 38/15 | 39/15.5 | 40/16 | 42/16.5 | 43/17 | 44/17.5 | 46/18 | 47/18.5 | 48/19 | 50/19.5 | 51/20 |
|-----------------|--------|---------|--------|---------|--------|---------|--------|---------|--------|---------|--------|
| Chest (cm/ins) | 102/40 | 107/42 | 112/44 | 117/46 | 122/48 | 127/50 | 132/52 | 137/54 | 142/56 | 147/58 | 152/60 |

LADIES WEAR

| Size | 8 | 10 | 12 | 14 | 16 | 18 | 20 | 22 | 24 | 26 |
|----------------|-------|-------|-------|-------|--------|--------|--------|--------|--------|--------|
| Bust (cm/ins) | 79/31 | 84/33 | 89/35 | 94/37 | 99/39 | 104/41 | 109/43 | 114/45 | 119/47 | 124/49 |
| Waist (cm/ins) | 59/23 | 64/25 | 69/27 | 74/29 | 79/31 | 84/33 | 89/35 | 94/37 | 99/39 | 104/41 |
| Hip (cm/ins) | 84/33 | 89/35 | 94/37 | 99/39 | 104/41 | 109/43 | 114/45 | 119/47 | 124/49 | 129/51 |

FOOTWEAR


| UK | 3 | 4 | 5 | 5.5 | 6 | 7 | 8 | 9 | 10 | 11 | 11.5 | 12 | 13 | 14 |
|-------------|----|----|----|-----|----|----|----|----|----|----|------|----|----|----|
| Continental | 36 | 37 | 38 | 39 | 40 | 41 | 42 | 43 | 44 | 45 | 46 | 47 | 48 | 49 |

METRIC CONVERSION CHART

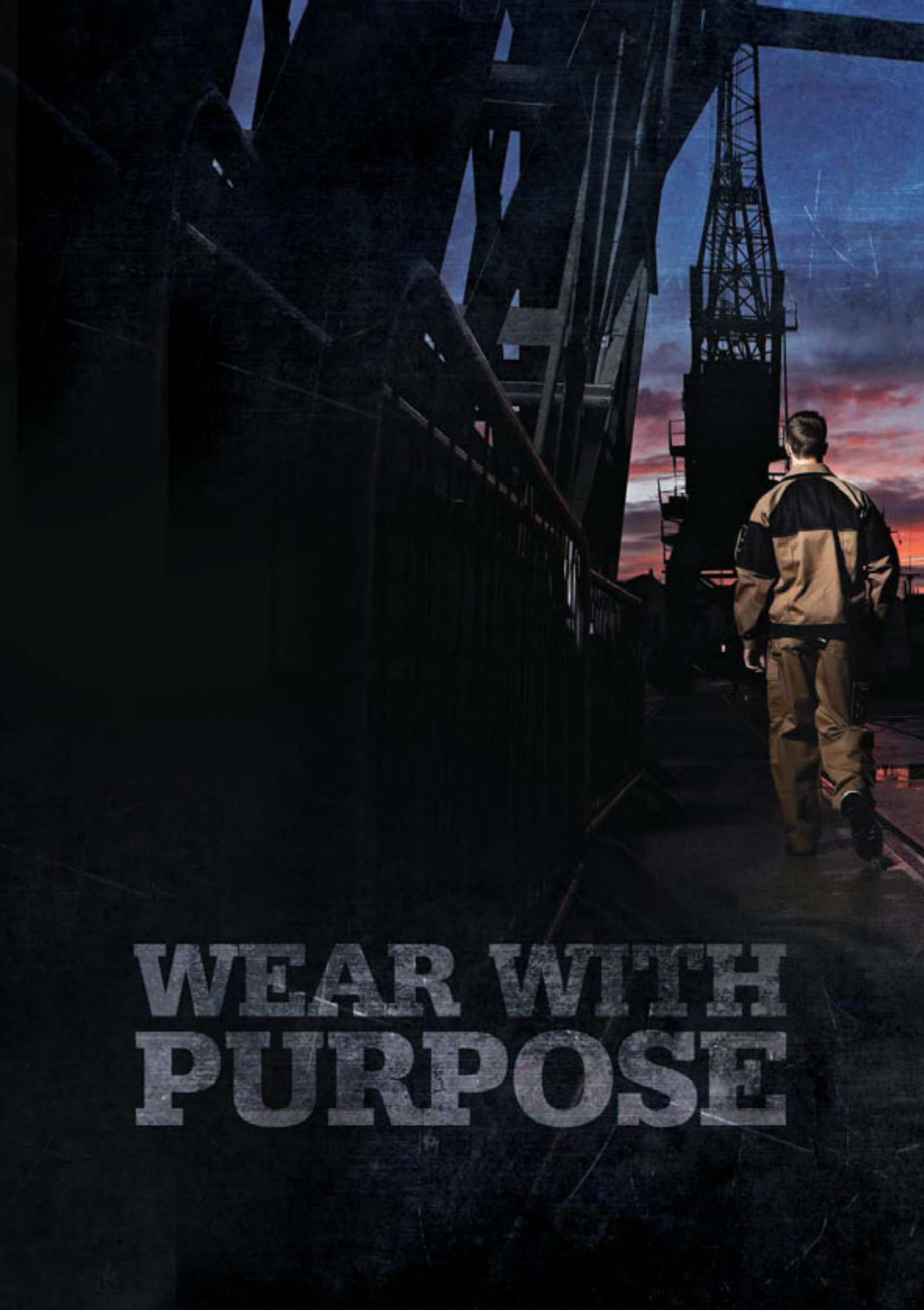
| Metric (cm) | 66 | 72 | 76 | 80 | 84 | 88 | 92 | 96 | 100 | 104 | 108 | 112 | 116 | 120 | 124 | 128 | 130 | 140 |
|----------------|----|----|----|------|----|------|----|------|-----|-----|------|-----|------|-----|-----|-----|-----|-----|
| Imperial (ins) | 26 | 28 | 30 | 31.5 | 33 | 34.5 | 36 | 37.5 | 39 | 41 | 42.5 | 44 | 45.5 | 47 | 49 | 50 | 52 | 55 |

The above calculations are approximate. For the exact conversion multiply cm by 0.394. Please note colours of products are represented as accurately as possible.

For Industry/Eisenhower Pro Painters Workwear Sizing Guide, please see page 61.

Williamson-Dickie Europe Ltd is a member of 

Our policy is one of continuous improvement and we reserve the right to change product specifications without notice.



**WEAR WITH
PURPOSE**

