

## CONTENTS

SAFETY INSTRUCTIONS	3
MAJOR PARTS	4
SPECIFICATIONS	5
ASSEMBLY AND OPERATION	6
MAINTENANCE	7
TROUBLE SHOOTING	7
PARTS DIAGRAM AND LIST	8-9
EC DECLARATION OF CONFORMITY	10

# SAFETY INSTRUCTIONS

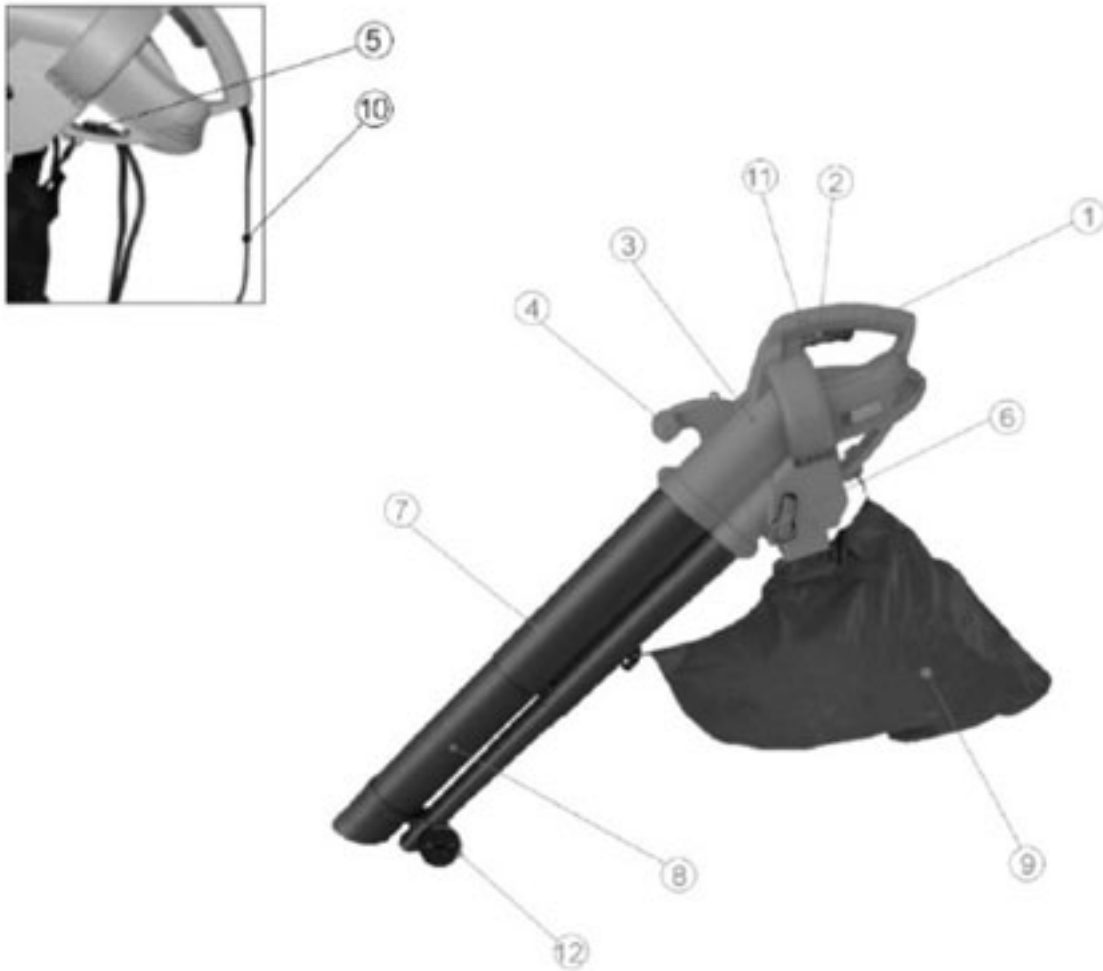
Read and understand the owner's manual and labels affixed to the electric blower/vacuum. Learn its application and limitations as well as the specific potential hazards. Retain these instructions for future reference.



- The Blow Vac is an electrical appliance using fast moving parts and as such can be dangerous if handled irresponsibly.
- The Blow Vac is only suitable for domestic use and can be used only for processing light, dry garden waste materials such as leaves, grass cuttings, clippings, small twigs and pieces of paper.
- **Never** use to vac, blow or shred heavy sharp or flammable materials such as metal, stones, branches, fir cones, glass, barbecue coals, cigarette ends, dust, gravel, soil or liquids.
- Use gloves and ear protection if operating for extended periods of time.
- We recommend eye protection is also worn during operation as objects can be ejected at high speed when the motor is running.
- **Never** expose the unit to rain or moisture. Store the machine in a totally dry environment.
- **Always** turn off the unit and fully disconnect from the mains electricity supply when cleaning or performing any maintenance.
- **Never** insert your hands into the openings whilst the unit is running or connected to the mains electricity supply.
- Do **not** modify the unit in any way.
- Repairs can only be undertaken by our nominated customer service agents. See contact details on the rear cover of this manual.



# MAJOR PARTS



1	Rear Handle
2	On/Off Switch
3	Main Body
4	Front Handle
5	Cable Strain Relief
6	Changeover Switch
7	Top Suction Tube
8	Bottom Suction Tube
9	Collection Bag
10	Mains Cable
11	Variable Power Switch
12	Front Wheel

## SPECIFICATION

<b>Model</b>	<b>THEV3000</b>
Motor Power	3000W
Motor	AC - motor 230V - 50Hz
Speed n	6000-14000 min <sup>-1</sup>
Blowing Air Flow (max air velocity)	270 km/h
Suction Power (max air velocity)	720m <sup>3</sup> /h
Hand/Arm Vibration (as EN 1033/DIN 45657)	Avhw= <3,96 m/s <sup>2</sup>
Collection Bag Volume	40L
Protection Class	II – Double Insulated
Weight	Approx 4.5kg
Sound Power Level (as 2000/14/EG)	Measure sound power level 98.3dB(A)
	Guaranteed Sound Power Level 102 dB(A)
Sound Pressure Level LPA (as 2000/14/EG)	87dB(A)

**The manufacturer reserves the right to change the product specification and livery according to continued product improvements.**

## ASSEMBLY AND OPERATION

1. Connect the top suction tube to the bottom suction tube and screw together.
2. Insert both suction tubes into the main body and screw together.
3. Insert the front handle into the recess in the main body.
4. Hook the front end of the collection bag onto the bottom suction tube, hook the rear end of the collection bag onto the main body and slip the square opening of the collection bag onto the square opening of the main body. It will snap into place.
5. Ensure the zip fastener is closed on the collection bag.
6. The strap is attached to the machine using the metal triangular clip. Unscrew and fix this to the small moulded ring on the top handle.
7. Thread the cable through the strain relief feature forming a loop as shown. Ensure that there is sufficient slack in the cable.
8. It is recommended that a 30mA current safety cut-off switch is employed when using the Blow/Vac. Ensure tubes are fixed in position and the collection bag is secure before connecting to the mains electricity supply.
9. Attach the wheels by sliding over the lower tube.



The **On/Off switch** is located on the underside of the rear handle and is operated by pressing and holding the switch to turn On and releasing to turn Off.



The **Variable Power Switch** is located on the left hand side of the rear handle - this controls the speed for both vacuum and blow options

**Never** use the Blow/Vac with wet hands or when it is raining.

### Using as a Blower:

Move the switch to the blower setting as shown and move the Blow Vac gently from side to side a few centimetres above ground level. Never point the Blow Vac at people or animals and take extra care when using near sand, soil, loose gravel or shingle.



### To convert to a Vacuum Shredder:

Move switch to the vac/shredder setting as shown. Adjust the length of the shoulder strap to suit and hold the machine with both hands (one on the top handle, one on the rear handle). Switch on and move the machine over the debris slowly. Suction power decreases when the bag is full so ensure that it is emptied regularly.



Before emptying disconnect from the mains.

When you have finished your work vacuuming return the switch to the blow mode to remove any material still lodged in the suction tubes.

## MAINTENANCE

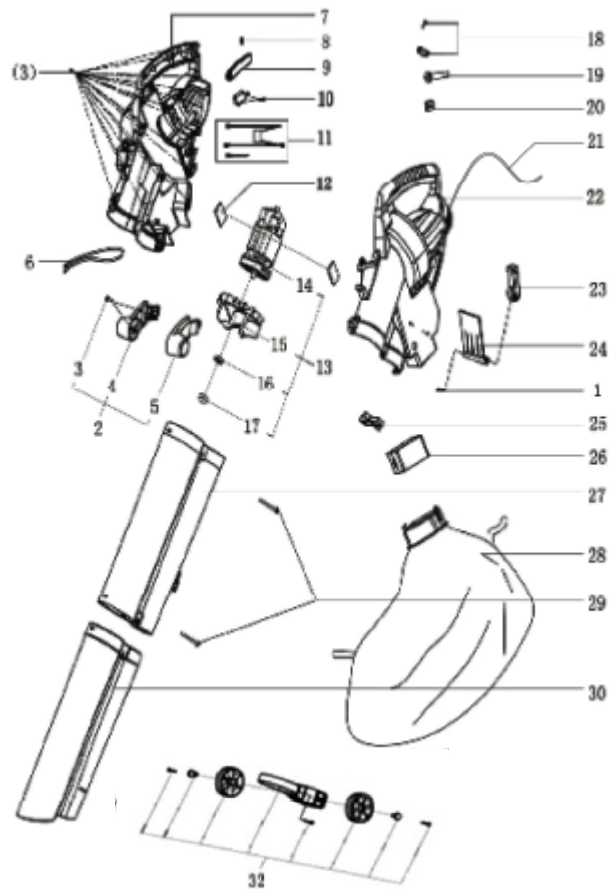
Before you perform any cleaning or maintenance work on your Blow Vac, ensure that the unit is switched off, disconnected from the mains electricity supply and that all moving parts are stationary.

1. Remove dust and dirt with a cloth or brush.
2. Never use water or solvents to clean the unit.
3. Shake out the collection bag thoroughly, turn inside out and brush the bag out.
4. You may wash the bag by hand when it is very soiled using a mild detergent but ensure it is thoroughly dry before re-use.
5. If the zip becomes stiff to use, rub with dry soap.
6. Regularly check the bag for rips, tears and holes and replace immediately if damaged.
7. Store in a dry environment and ensure the unit is thoroughly clean prior to an extended storage time.

## TROUBLE SHOOTING

<b>Problem</b>	<b>Possible Cause</b>	<b>Remedy</b>
Will not start	<ul style="list-style-type: none"><li>• No mains power (Power failure).</li><li>• Motor or Switch Defect.</li></ul>	<ul style="list-style-type: none"><li>• Check fuse.</li><li>• Check and replace cable if necessary (by qualified electrician).</li><li>• Contact the helpline number on the rear cover of this manual.</li></ul>
Material is not being vacuumed properly.  Reduced vacuuming power.	<ul style="list-style-type: none"><li>• Suction tubes clogged or blocked.</li><li>• Collection bag is full.</li><li>• Extension cable, if used, is too long or the cable section is too small.</li></ul>	<ul style="list-style-type: none"><li>• Switch to blow mode and clear blockage.</li><li>• Empty collection bag.</li><li>• Use correct size cross section on extension cable.</li></ul>

# PARTS DIAGRAM



# PARTS LIST

No.	Part No.	Description	Qty
1	TH100-1	Screw	4
2	TH100-2	Front Handle Assembly	1
6	TH100-6	Carry Strap	1
7	TH100-7	Right Main Housing	1
8	TH100-8	Spring	1
9	TH100-9	On/Off Button	1
10	TH100-10	Switch	1
11	TH156-11	Capacitor	1
12	TH100-12	Rubber Gasket	2
13		Motor Sub Assembly	1
14		Motor	1
15	TH100-15	Fan	1
16	TH100-16	Lock Nut	1
17	TH100-17	Insulated Cap	1
18	TH100-18	Cord Clamp	1
19	TH100-19	Cord Guard	1
20	TH156-20	Terminal Block	1
21	TH156-21	Power Cable	1
22	TH156-22	Left Main Housing	1
23	TH100-23	Vac/Blow Lever	1
24	TH100-24	Air Block Board	1
25	TH156-25	Board	1
26	TH100-26	Bush	1
27	TH100-27	Top Suction Tube	1
28	TH156-28	Collection Bag	1
29	TH100-29	Screw	1
30	TH100-30	Bottom Suction Tube	1
31	TH156-31	Speed Controller	1
32	TH156-32	Front Wheel	1





## EC Declaration of Conformity

We, Importer  
**Handy Distribution Ltd.**  
**SN3 4NS**

Declare that the product  
**Designation: 3000W LEAF BLOWER VACUUM**  
**Model: THEV3000**

Complies with the following directives:


**2006/42/EC**- Machinery Directive  
**2006/95/EC**- Low Voltage Directive  
**2004/108/EC**- Electromagnetic Compatibility Directive  
**2000/14/EC amended by 2005/88/EC**- Noise Emission in the Environment by Equipment for  
Use Outdoors Directive.

The conformity assessment procedure followed was in according with Annex V of the  
**Directive 2000/14/EC.**

**-Measured Sound Pressure Level: 101.1 dB (A)**  
**-Guaranteed Sound Power Level: 102 dB (A)**

Standards and technical specifications referred to:

**EN60335-1/A2:2006+A13:2008**  
**EN60335-1:2009**  
**IEC60335-2-100:2002**  
**EN62233:2008**  
**EK9 2007-07:2006-11-16**  
**EN55014-1 :2006**  
**EN55014-2:1997 /A1:2001**  
**EN61000-3-2 :2006**  
**EN61000-3-3 /A2:2005**

 **ory and technical file holder**

  
Signature: \_\_\_\_\_

Name / title: **Mr. Simon Belcher / Managing Director**  
**Hobley Drive, Stratton St Margaret, Swindon, Wiltshire, SN3 4NS**

To order spare parts and see the complete range of garden machinery and garden equipment from Handy, visit:

**[www.thehandy.co.uk](http://www.thehandy.co.uk)**

Spares & Support: 01793 333212

