



## **OPERATOR'S MANUAL AND PARTS LIST 2400W IMPACT SHREDDER - THIS**

Sales & Helpline 01793 333220

[www.thehandy.co.uk](http://www.thehandy.co.uk)

**Before use please read & understand this manual, paying particular attention to the safety instructions.**

# CONTENTS

SAFETY INSTRUCTIONS	3
MAJOR PARTS	4
ASSEMBLY	5
OPERATION	6
PARTS DIAGRAM AND LIST	7-8
EC DECLARATION OF CONFORMITY	9

# SAFETY INSTRUCTIONS

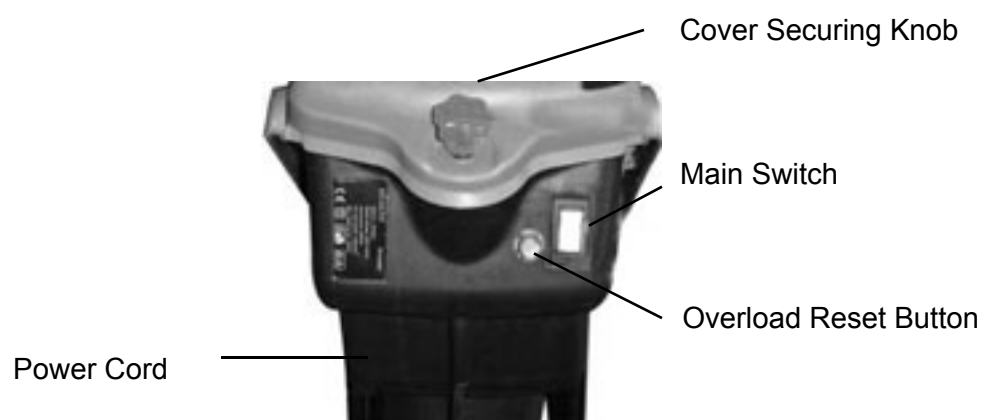
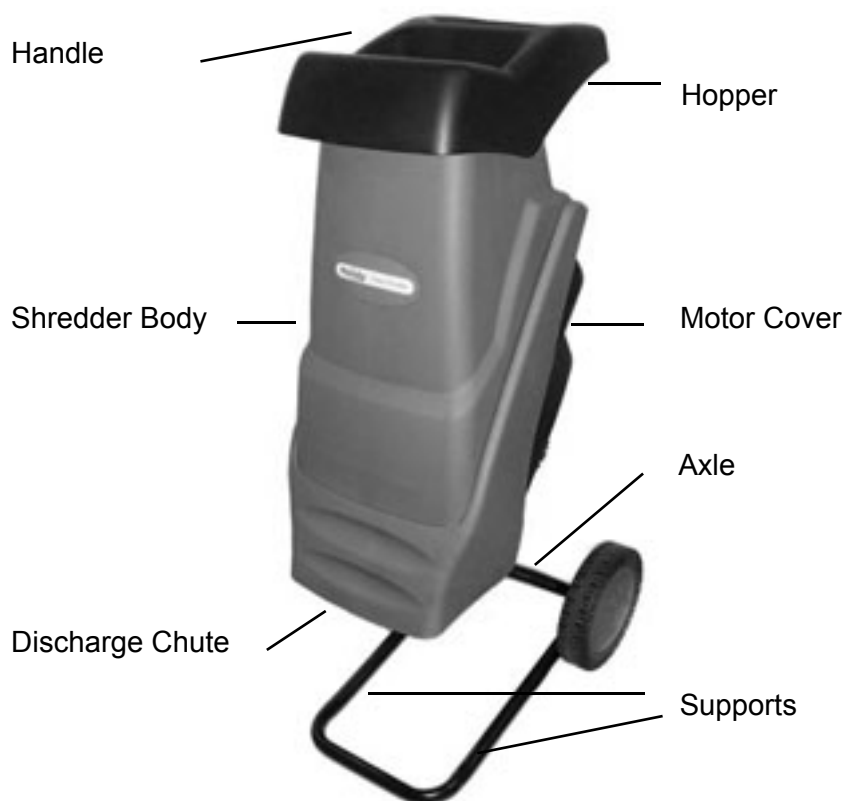
**Read and understand the owner's manual and labels affixed to the electric shredder. Learn its application and limitations as well as the specific potential hazards. Retain these instructions for reference.**



- The Impact Shredder is an electrical appliance using fast moving parts and as such can be dangerous if handled irresponsibly.
- Ensure that no foreign objects such as stones, glass, metal, earth or plastics are fed into the shredder; these could cause blunting of the blade and seriously damage the motor.
- Only use extension cables that are approved for outdoor use. Check that they are in good condition.
- Use gloves and ear protection if operating for extended periods of time.
- We recommend safety goggles are worn during operation as objects can be ejected at high speed when the motor is running.
- All onlookers, children and pets should be kept at a safe distance and only those familiar with the operation of the shredder should be permitted to use it.
- **Never** expose the unit to rain or moisture and store the machine in a totally dry environment.
- **Always** turn off the unit and fully disconnect from the mains electricity supply when cleaning or performing any maintenance. Wait until the cutting disc stops.
- **Never** insert hands into the feed hopper or debris chute whilst the unit is running or connected to the mains electricity supply.
- Do **not** modify the unit in any way.
- Replace worn or damaged parts using only original spares.
- **Never** move the shredder by pulling on the cable and always switch off when transporting. Do not leave the shredder unattended whilst it is switched on.



# MAJOR PARTS



# ASSEMBLY

- Insert the Axle through the pre-drilled holes in the Foot Supports.
- Insert the supports into the body of the shredder as shown.
- Attach each Wheel to the Axle in the order shown below and ensure that the nut is not too tight. ( From left to right - washer, axle sleeve, wheel, washer, nut, wheel cover). Some models may not have the axle sleeve.



- The knob has a safety switch built into it and the machine will not activate unless the knob is tightened.
- Attach the collection bag to the machine by means of the hooks on the sides of the discharge chute.
- Do **not** use the shredder without the hopper.

# SPECIFICATION

Model No	THIS
Voltage	230-240V~50Hz
Power	S1:2000W, S6: 2400W
No-load Speed	4500rpm
Max Branch Diameter	40mm
Sound Power Level	107dB(A)
Length of Cable	0.35m
Protection Class	IPX4
Net Weight	14kg

# OPERATION

- Place the machine on firm, level ground whilst operating and place receptacle underneath the discharge chute or attach the collection bag.
- Press the switch marked “I” to start and “0” to stop the motor. Press the overload reset button if the machine does not work, ensuring you have connected to the power supply.
- Allow the motor to run for a few seconds before commencing work.
- Inspect the material to be shredded before starting and remove any sharp objects, stones, wire etc which could damage the cutting mechanism.
- The machine will automatically pull the waste material in. Do not force too much material in at once otherwise the chute may block up.
- If a blockage occurs and the blade stop working, disconnect the machine and free any jammed material. If the blade stalls for more than 5 seconds, the overload switch will cut in and switch off the machine. Allow the machine to cool for at least 1 minute before attempting to re-start. Push the overload switch first, then the On/Off switch.
- There is a plunger provided to aid the the feeding of softer material - do not feed soft kitchen waste into the shredder - it is better to compost it.

## Hints and Tips:

- Use the machine to shred the following materials only - twigs and branches ( max dia 40mm), pruning trimmings, hedge trimmings, plant material and roots ( remove soil first).
- Be alert to long leaf branches which can whip back as they are being drawn into the shredder.
- Organic material which contains a large amount of water and sap can stick to the cutting blades - it is best to leave it for a few days to dry out.
- To make finer compost the shredded material can be passed through a second time.
- Keep the ventilation slots on the body free of dust and debris.
- Do **not** leave the shredder running unattended; disconnect the plug when leaving or moving the machine.

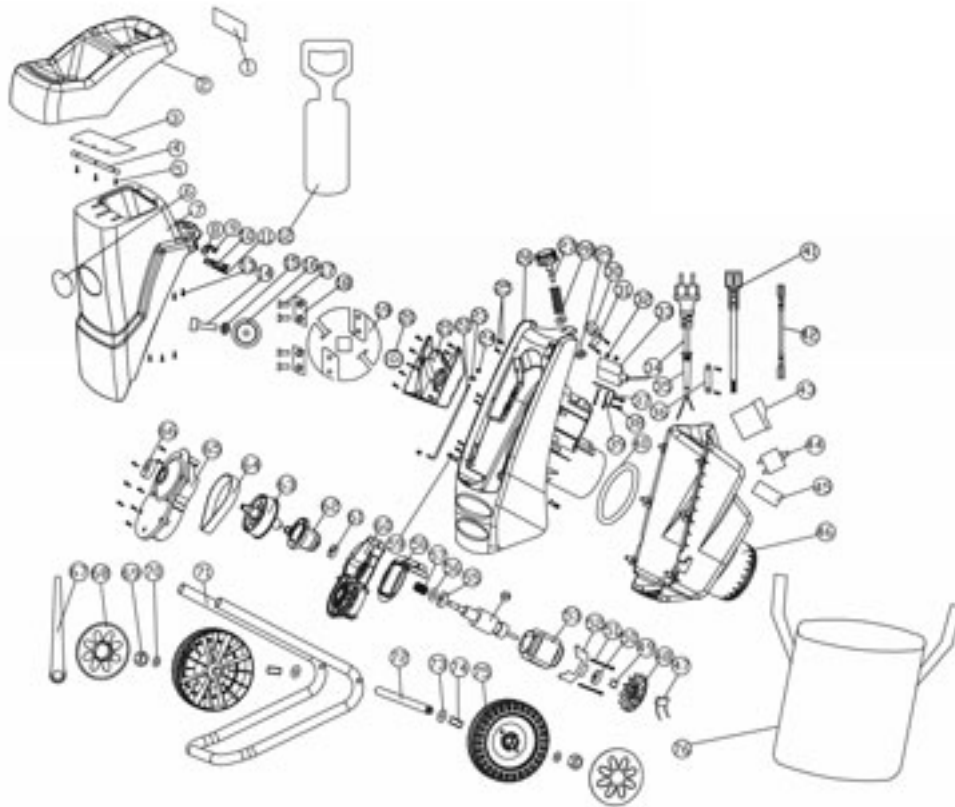
## Blade Replacement:

- The blades have two cutting edges. When the blades become worn they can be reversed to use the second cutting edge but these should be changed by an authorised service dealer.
- When both edges of the blades have become worn they must be replaced **as a pair**. The blades can be re-sharpened but this must be done by a professional using an oil stone. The weight of each blade is critical to maintain the balance of the cutting disc.

## Maintenance:

- During any maintenance work ensure that the machine is switched off and disconnected from the mains.
- If an extension cable is used it must be of the same grade as that fitted to the shredder. Check the cables regularly for signs of damage or wear.
- **Never** attempt to override the overload switch - it is there for your safety.
- Remove all deposited matter after use with a brush and clean the machine and all plastic parts with soap and a damp cloth.
- Do not clean the shredder with a hosepipe or by rinsing. No water should be allowed to enter the shredder.

# PARTS DIAGRAM



# PARTS LIST

No	Part No	Desc	No	Part No	Desc
1	TH101-911365002	Warning Sticker	2	TH101-9151650001	Hopper
3	TH101-9053650006	Rubber Flap	4	TH101-9150650001	Clamp Bar
5	TH101-9SBABC4.2-20	Screw	6	TH101-9114-650001	Logo
7	TH101-9001650001	Up Housing	8	TH101-6053650005	Bolt Frame Plate
9	TH101-9SBABC04-10	Screw	10	TH101-9WSB-4	Spring Washer 2
11	TH101-9030650001	Switch Pin	12	TH101-9057-650001	Plunger
13	TH101-9SBABC05-20	"H" Type Screw	14	TH101-9SBABC08-30	Screw
15	TH101-9WSB-08	Spring Washer 1	16	TH101-907265000	Clamp Block
17	TH101-9132650001	Screw	18	TH101-9132650001	Blade Set Inc Screws
19	TH101-9072650001	Blade Plate	20	TH101-9072650002	Drive Block
21	TH101-9053650008	Blade Defend Block	22	TH101-9057650003	Pull Bar
23	TH101-9030650004	Washer 3	24	TH101-9NCN04	Nut
25	TH101-9SBABC4.2-18	Screw	26	TH101-9002650001	Down Housing
27	TH101-9058650001	Knob	28	TH101-9060650001	Spring
29	TH101-9030650002	Internal Nut	30	TH101-9075650001	Nut
31	TH101-9053650007	Nut Frame Plate	32	TH101-9NAN-04	Hex Nut
33	TH101-9032650001	Overload Switch	34	TH101-9029650001	Power Cord
35	TH101-9023630001	Cord Sheath	36	TH101-9053650001	Cord Clamp Plate
37	TH101-9053650004	Switch Frame Plate	38	TH101-9SBABC05-20	Screw
39	TH101-9SBABC04-40	Screw	40	TH101-9131650001	Filter
41	TH101-9027650001	Connecting Wire 1	42	TH101-9027650002	Connecting Wire 2
43	TH101-9032650002	Electromagnetic Switch	44	TH101-9092650001	Overcurrent protection
45	TH101-9113650001	Data Sticker	46	TH101-9142650001	Motor Cover
47	TH101-9033620001	Capacitor	48	TH101-9022650001	Fan
49	TH101-9023650002	Shaft Sheath	50	TH101-9DB-6080Z	Bearing
51	TH101-9SBABC04-75	Screw	52	TH101-9039650001	Motor Support
53	TH101-9005650001	Field	54	TH101-9013650001	Armature
55	TH101-9DB-62010Z	Bearing	56	TH101-9030650005	Washer
57	TH101-9031650004	Small Belt Wheel	58	TH101-9053650002	Wind Defend Board
59	TH101-9138650001	Plastic Pin	60	TH101-9069650003	Down Cover Gear-box
61	TH101-9DB6290Z	Bearing	62	TH101-9031650003	Eccentric Wheel
63	TH101-9031650002	Big Belt Wheel	64	TH101-9047650001	Belt
65	TH101-9069650002	Up Cover Gearbox	66	TH101-9DB-60030Z	Bearing
67	TH101-9098650001	Spanner	68	TH101-9069650001	Wheel Cover
69	TH101-9NCN-08	Hex Nut	70	TH101-9030650003	Washer
71	TH101-9038650001	Support Tube	72	TH101-9057650002	Connecting Pole
73	TH101-9030650003	Washer	74	TH101-9023650001	Wheel Axle Sleeve
75	TH101-9031650001	Wheel	76	TH101-101-BAG	Collection Bag



# EC DECLARATION OF CONFORMITY

Declaration of Conformity

Pursuant to the regulations of the following EC Directives:

- Electromagnetic Compatability Directive 89/336/EEC
- Low Voltage Directive 73/23/EEC
- Machinery Directive 98/37/EC
- Noise Emission Directive 2000/14/EC

Handy Distribution Ltd hereby declares that the product:

Machine Type: **Impact Shredder**

Machine Model: **THIS**

Conforms to the main safety requirements of the EC Directives listed above.  
This conformity is based on the following standards and normative documents:

EN 55014-1:2000+A1+A2

EN 55014-2:1997+A1

EN 61000-3-2:2000

EN61000-3-11:2000

EN 60335-1:2002+A1+A11

EN 13683:2003

98/37/EC - Annex I

The responsible person, based within the EC, is identified below

Name: Mr Derek Belcher

Title: Managing Director

Company: Handy Distribution Ltd

Address: Hobley Drive, Stratton St Margaret, SWINDON, SN3 4NS

Signature:

Date: 20th Feb 2008

To order spare parts and see the complete range of garden machinery and garden equipment from Handy, visit:

**[www.thehandy.co.uk](http://www.thehandy.co.uk)**

