



OPERATOR'S MANUAL AND PARTS LIST

Log Splitter Stand - THLSS-6

Spares & Support: 01793 333212

www.thehandy.co.uk

Before use please read & understand this manual, paying particular attention to the safety instructions.

15/05/2012

Log Splitter Stand-THLSS-6

This stand is produced to support The Handy Log splitter THLS-6

Thank you for purchasing The Handy log splitter stand. Please carefully read the assembly instructions for the safety of yourself and others.

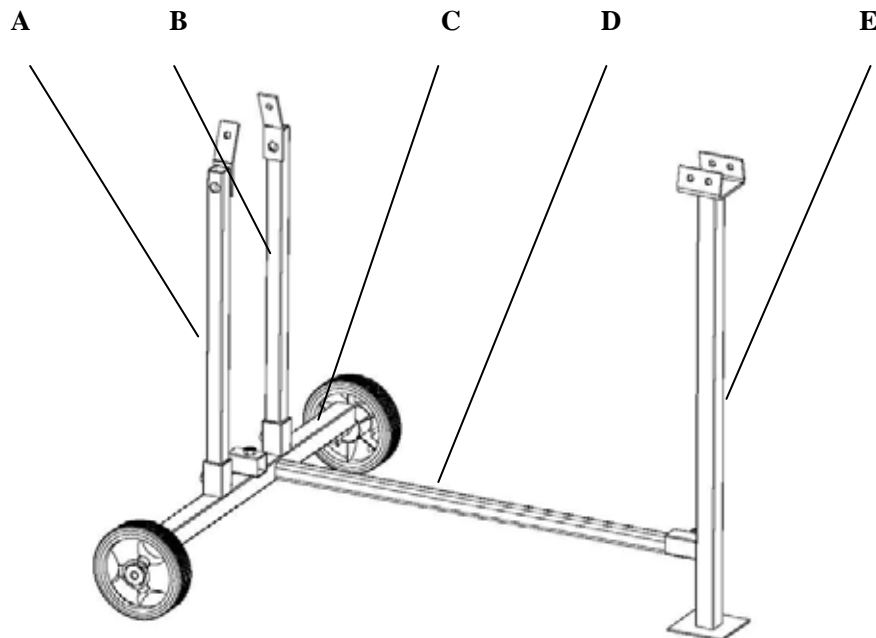
ASSEMBLY:

Fig 1: List of components

Check the components according to the following list and Figure 1.

- A. Leg Support 1
- B. Leg Support 2
- C. Axle and Wheels
- D. Horizontal bar
- E. Main upright support leg — top section fixing point for the log splitter THLS-6

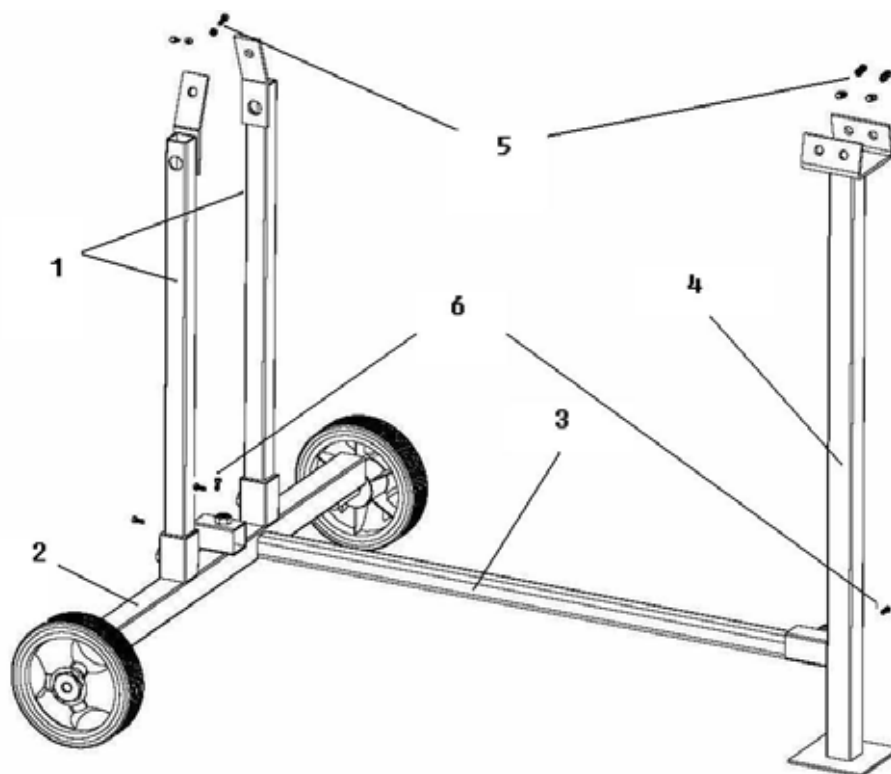
Fig 1



Parts List and diagram

1	Left Support	2
2	Axle and Wheel	1
3	Horizontal bar	1
4	Main upright support leg	1
5	Nuts and bolts (M8 X 25)	6
6	Nut (M10 X 25)	4

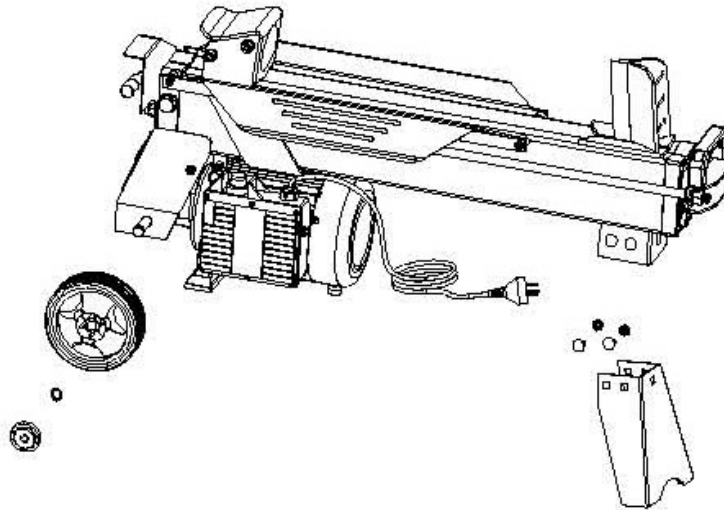
Fig 2.



Assembled Log Splitter stand THLSS-6 with The Handy Log splitter THLS-6

1. Remove the wheels and support leg from the log splitter THLS-6. See figure 3.

Fig 3.



2. Carefully fit the log splitter to your fully assembled stand, use the nuts and bolts supplied (part list items 5&6) to secure the log splitter to the stand. See figure 4.

Secure your log splitter at the top of the each support leg (points A, B and E).
Ensure all fixing points are tight and secure.

Fig 4.

