

## **OPERATOR'S MANUAL AND PARTS LIST**

### **8 Ton Manual Logsplitter - THMLS**

Spares & Support: 01793 333212

[www.thehandy.co.uk](http://www.thehandy.co.uk)

**Before use please read & understand this manual, paying particular attention to the safety instructions.**

**\*\*\* READ ALL WARNINGS BEFORE OPERATION!\*\*\***

Always wear safety glasses when using this log splitter!

Tie back long hair, roll up sleeves and remove any loose clothing, jewellery or gloves to prevent them getting caught in moving parts.

This log splitter is only intended to be used to split logs!

Serious injury may occur if this log splitter is used for any other purpose than its intended use.

**PLEASE READ PRIOR TO OPERATION:**

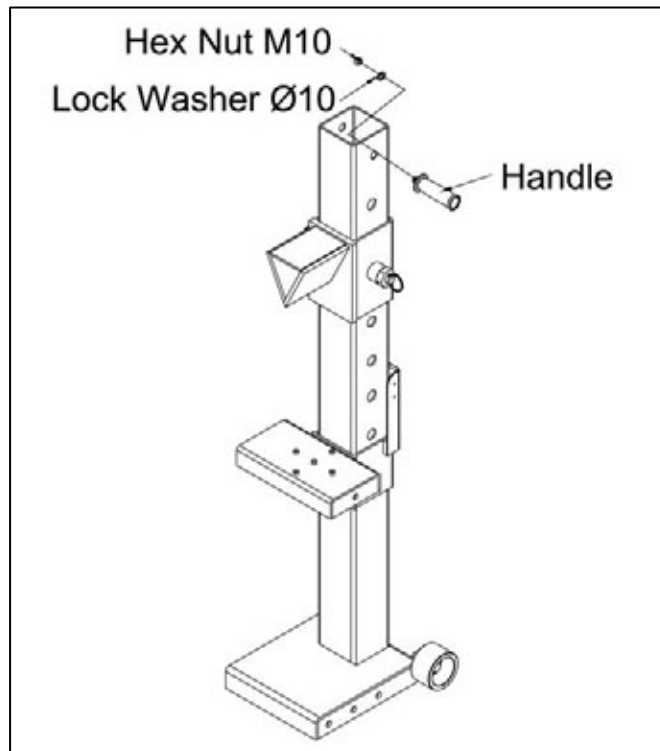
1. Read and understand this entire instruction manual before using this log splitter.
2. Always wear safety glasses when using this log splitter to avoid damage to your eyes from flying wood pieces.
3. Never place your hands or other body parts on or near the log, wedge, hydraulic ram, or splitter workbench while splitting the log.
4. Do not use this log splitter for any other purpose other than splitting logs. Do not use this log splitter beyond its 8 ton capacity.
5. Never leave the log or splitter under pressure.
6. Keep the area around the log splitter clear of any bystanders to prevent injury from ejected wood pieces.
7. Always clear away wood pieces from the log splitter and the area around it before starting on another log.

## **ASSEMBLY:**

Place log splitter horizontal or vertical on floor in a clear and level area. Refer to the parts list for the following steps:

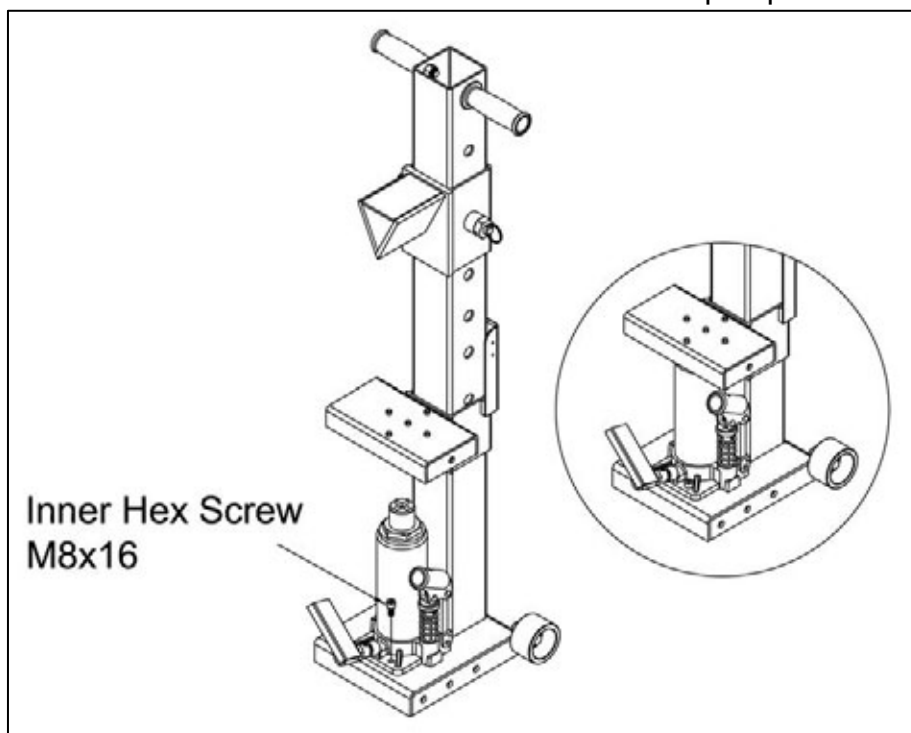
### **Step 1: Attach The Handles**

Attach handles (part #8) to the top of the log splitter. One handle on each side. Secure each handle using a Lock Washer Ø10 (part #20) and M10 Hex Nut (part #21).



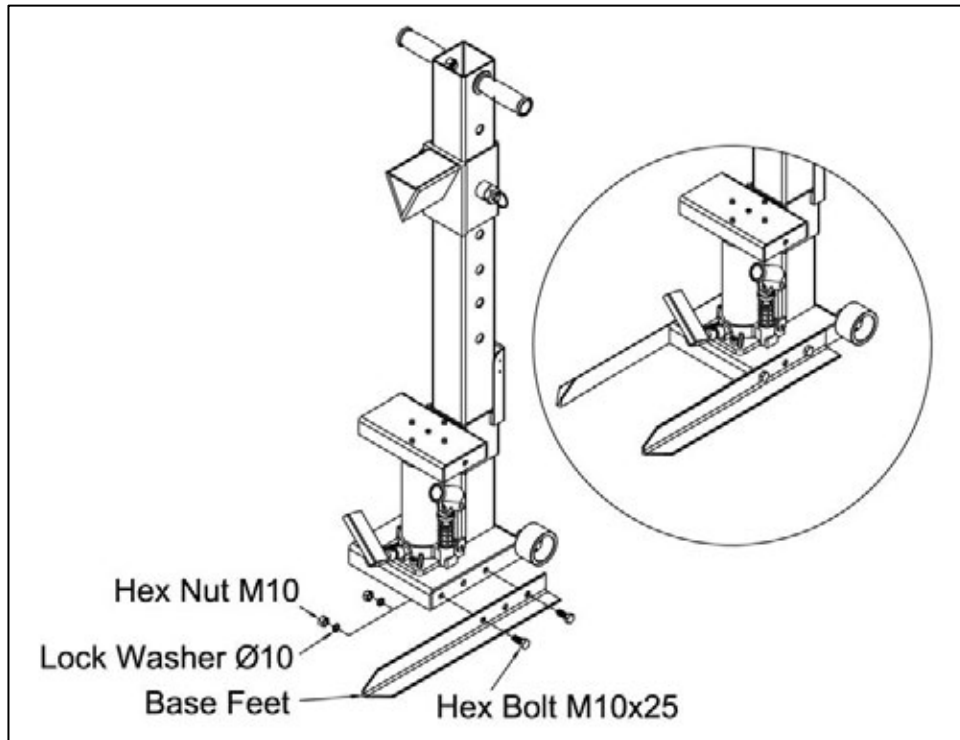
### **Step 2: Attach The Hydraulic Pump**

Assemble the hydraulic pump (part #12) to the base by using two inner hex screws M8x16 (part #14). Note you should use an inner hex wrench to assemble this pump.



### Step 3: Attach The Base Feet

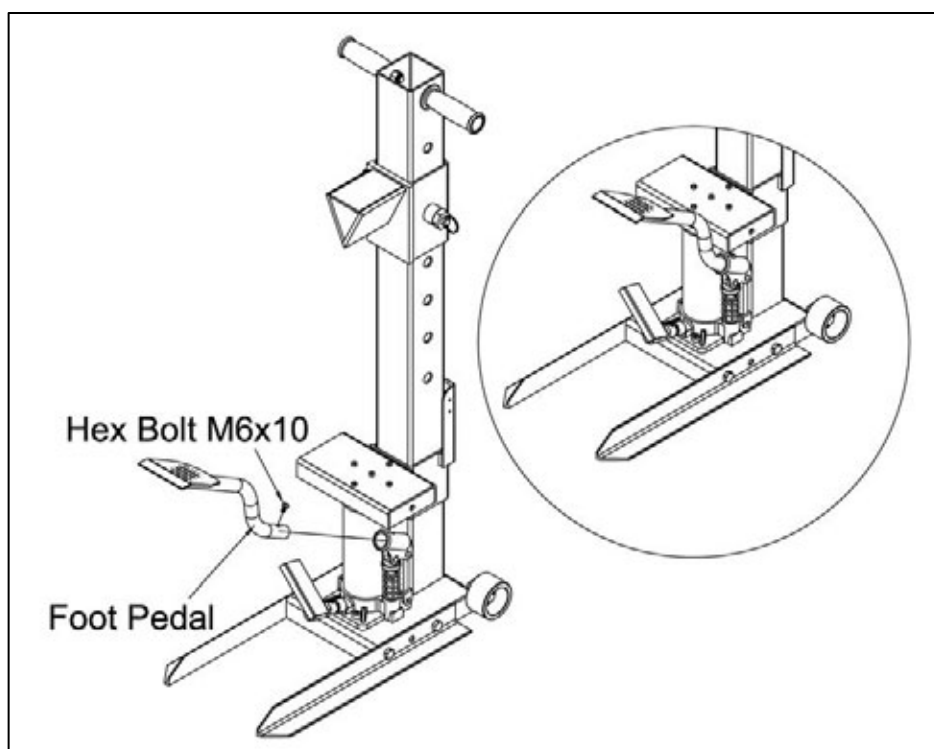
Attach the Base Feet (part #22) to the bottom of the main post near the hydraulic pump as shown in Step 3. One foot on each side. Secure each foot using two M10X25 Hex Bolts (part #19), two Lock Washers Ø10 (part #20) and two M10 Hex Nuts (part #21).



*NOW POSITION LOG SPLITTER VERTICALLY ONTO FEET*

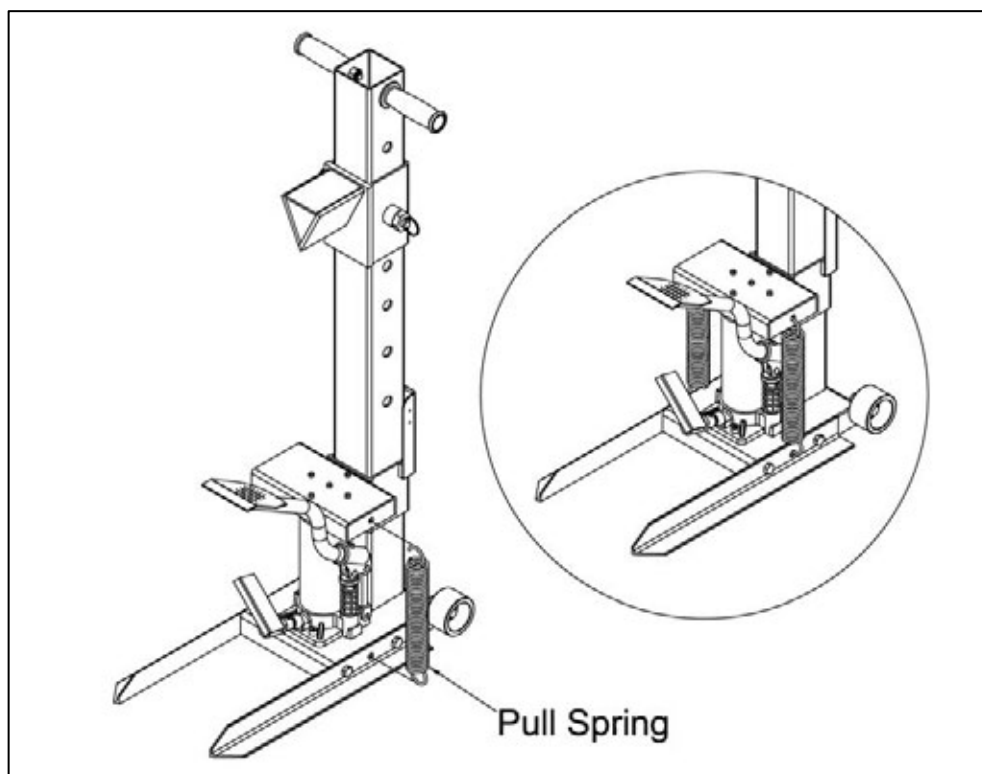
### Step 4: Attach The Foot Pedal

Insert foot pedal (part #5) into hydraulic pump slot. Tighten hex bolt M6x10 (part #6) to secure the foot peddle to the hydraulic pump. See parts illustration.



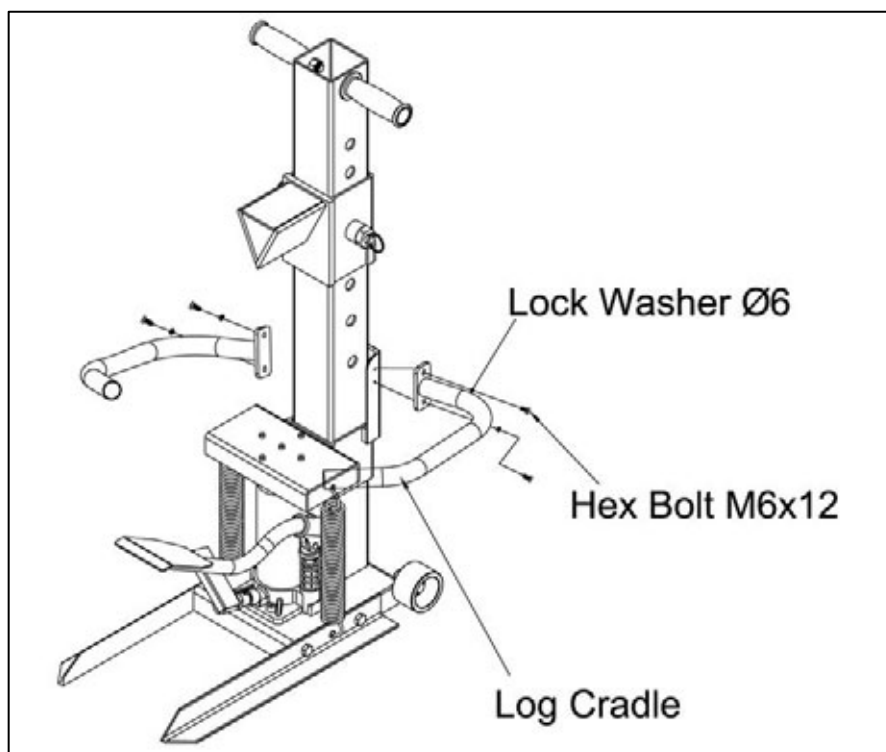
### Step 5: Attach The Pull Springs

Attach each pull spring (part #13) into the centre hole of the foot leg first. Then attach the opposite end to the splitter workbench (part #11). Repeat Step 5 for each spring.



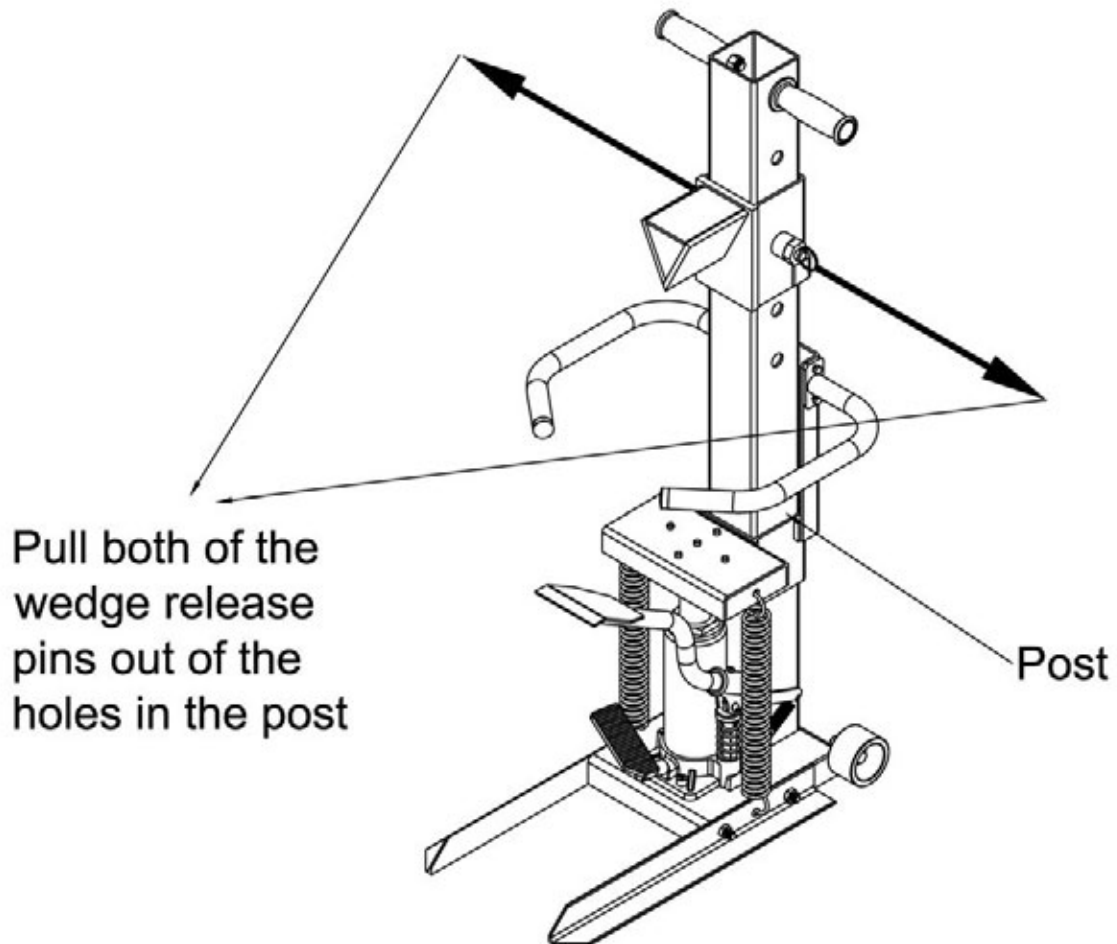
### Step 6: Attach The Log Cradle

Attach the log cradle (part #29) to the main post by using a Hex Bolt M6x12 (part #31) and a Lock Washer Ø6 (part #32).



## **OPERATION:**

1. Cut the logs for splitting to 23" or less to fit into the splitter.
2. To enable the hydraulic jack ram -- pump the foot pedal of the hydraulic pump to raise the splitter workbench.
3. Pull both of the wedge release pins out of the holes in the post, and lower the wedge to a height slightly more than the length of the log.



**Note: Make sure the wedge release pins are firmly seated in the post holes before continuing.**

4. Place the log securely on the splitter workbench.
5. Keeping the log stable and your hands out of the way of the wedge, use the hydraulic foot pedal to raise the log up tight against the wedge.
6. Keep your hands away from the log and log splitter, continue with even strokes of the hydraulic foot pedal until the log is split.
7. Remove the wood pieces and clear the area of any debris.
8. To lower the splitter workbench first release the hydraulic pump by treading on the release lever on the jack, then apply downward pressure to the workbench.

**STORAGE:**

Store the log splitter in a dry location with the pressure released by treading the release lever.

**MAINTENANCE:**

Wipe down the log splitter to remove any tree sap or dirt after each use. Occasionally, you may need to add hydraulic oil to maximise performance.

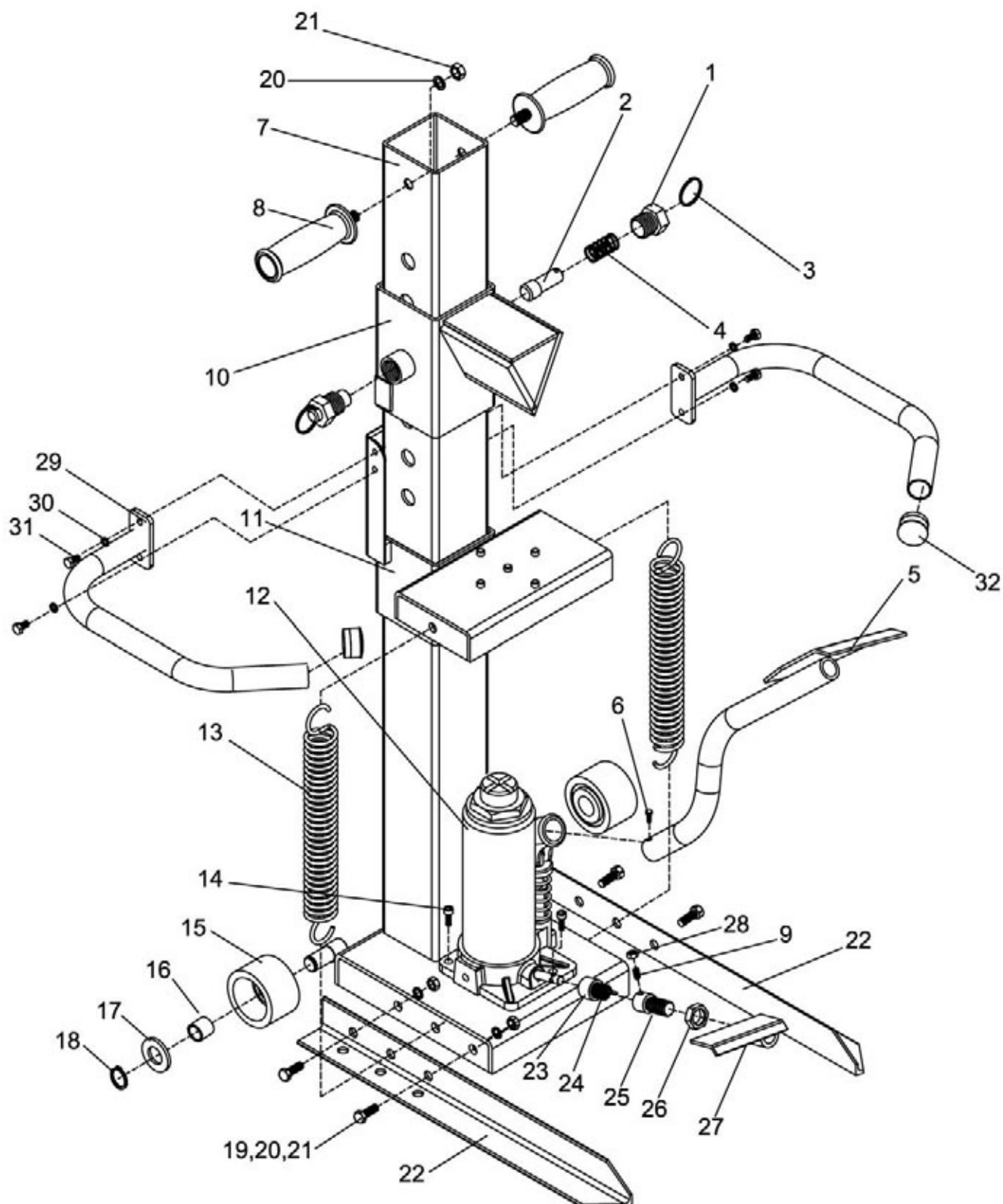
**To add oil to the hydraulic pump:**

*Note: Refer to the Parts Breakdown to identify the parts named below.*

1. Remove the pull spring, then separate the workbench from hydraulic pump.
2. Use a 6mm inner hex wrench to remove the two inner hex screws that hold the hydraulic pump to the base.
3. Position the pump horizontally and remove the round rubber oil plug on the back of the pump housing.
4. Add ISO VG15 hydraulic oil until the cylinder is approximately 3/4 full. (Oil weight is approximately 0.7kg/1.543lbs)
5. Replace the rubber oil plug and reassemble the log splitter.

# 8 TON MANUAL LOG SPLITTER

## PARTS DIAGRAM





## **PARTS LIST**

<b>NO.</b>	<b>WEBB NO.</b>	<b>DESCRIPTION</b>	<b>QTY</b>
1	TH196-1	Sleeve With Thread	2
2	TH196-2	Pin	2
3	TH196-3	Ring	2
4	TH196-4	Pressure Spring	2
5	TH196-5	Foot Pedal	1
6	TH196-6	Hex Bolt M6x10	1
7	TH196-7	Beam Frame	1
8	TH196-8	Handle	2
9	TH196-9	Inner Hex Screw M6x12	1
10	TH196-10	Wedge Assembly	1
11	TH196-11	Workbench	1
12	TH196-12	Hydraulic Pump	1
13	TH196-13	Pull Spring	2
14	TH196-14	Inner Hex Screw M8x16	2
15	TH196-15	Wheel	2
16	TH196-16	Spacer	2
17	TH196-17	Flat Washer Ø16	2
18	TH196-18	Back Ring Ø17	2
19	TH196-19	Hex Bolt M10x25	4
20	TH196-20	Lock Washer Ø10	6
21	TH196-21	Hex Nut M10	6
22	TH196-22	Base Feet	2
23	TH196-23	Torsional Spring Sleeve	1
24	TH196-24	Torsional Spring	1
25	TH196-25	Extension Rod	1
26	TH196-26	Thin Nut M16	1
27	TH196-27	Release Lever	1
28	TH196-28	Hex Nut M6	1
29	TH196-29	Cradle	2
30	TH196-30	Lock Washer Ø6	4
31	TH196-31	Hex Bolt M6x12	4
32	TH196-32	End Cover	2



## EC Declaration of Conformity

We, Importer  
**Handy Distribution**  
**SN3 4NS**

Declare that the product  
**Designation: Manual 8 Ton Logsplitter**  
**Model: THMLS**

Complies with the following directives:  
**2006/42/EC - Machinery Directive**

The conformity assessment procedure followed was in accordance with  
**Directive 2006/42/EC**

Name of the Notified Body: **Ente Certificazione Macchine Srl.**  
Address: Via Mincio, 386 – 41056 Savignano s/P. (MO) – Italy – R.I. 48198

Standards and technical specifications referred to:  
EN609-1+A2:2009, EN14121-1:2007, EN ISO 12100-1:2003/A1:2009,  
EN ISO 12100-2:2003/A1:2009

### Authorised signatory and technical file holder

Date: 03/04/2013

Signature:

Name / title: Mr. Simon Belcher / Managing Director  
Hobley Drive, Stratton St Margaret, Swindon, Wiltshire, SN3 4NS.



To order spare parts and see the complete range of garden machinery  
and garden equipment from Handy, visit:

**[www.thehandy.co.uk](http://www.thehandy.co.uk)**

Spares & Support: 01793 333212

