



OPERATOR'S MANUAL AND PARTS LIST

2 in 1 Scarifier and Raker - THSR

Spares & Support: 01793 333212

www.thehandy.co.uk

Before use please read & understand this manual, paying particular attention to the safety instructions.

SAFETY INSTRUCTIONS



Warning! Read these instructions carefully before operating this machine.

Make sure that you are familiar with the controls and properly operate the machine. Following these instructions, you can reduce the risk of fire, electric shock and personal injury.

GENERAL SAFETY INSTRUCTIONS

Read all safety warnings and all instructions. Failure to follow the warnings and instructions may result in electric shock, fire and/or serious injury! Save all warnings and instructions for future reference. The term "garden power tool" in the warnings refers to your mains-operated (corded) garden power tool or battery-operated (cordless) garden power tool!

1. This garden power tool is not intended for use by persons (including children) with reduced physical, sensory or mental capabilities, or a lack of experience and knowledge. New users should be given supervision or instruction concerning use of the garden power tool or given these instructions.
2. Children should not play with the garden power tool.
3. The garden power tool must be kept out of reach of children.
4. Store the instruction manual in a location accessible to all users of the garden power tool and always include the instruction manual when passing it on to other users.
5. Instruct inexperienced persons on the safe use of this garden power tool using this instruction manual.

IMPORTANT READ CAREFULLY BEFORE USE AND KEEP FOR FUTURE REFERENCE

Training

Read the instructions carefully. Be familiar with the controls and the proper use of the machine.

Preparation

1. Never allow people unfamiliar with these instructions or children to use the product. Local regulations can restrict the age of the operator.
2. Never operate the product while people, especially children, or pets are nearby.
3. Keep in mind that the operator or user is responsible for accidents or hazards involving the lawnmower that occur to other people or their property
4. Wear ear protection and safety glasses at all times while operating this product.
5. Always wear substantial footwear and long trousers while operating the product. Do not operate the product when barefoot or wearing open sandals.
6. Thoroughly inspect the area where the product is to be used and remove all stones, sticks, wires, bones and other foreign objects.
7. Before using, always visually inspect to see that the tines or bolts are not worn or damaged. Replace worn or damaged tines and bolts in sets to preserve balance.

Operation

1. Operate the product only in daylight or in good artificial light.
2. Avoid operating the product in wet grass. If you must use the product in wet grass, take additional precautions to avoid slipping.
3. Always be sure of your footing on slopes.
4. Walk, never run when using the machine.
5. Always work across the face of slopes, never up and down.
6. Exercise extreme caution when changing direction on slopes.
7. Do not operate the product on steep slopes.
8. Turn off the machine and use extreme caution when reversing or pulling the product towards you.
9. Stop the tines if the product has to be tilted for transportation. Do not operate the tines when crossing surfaces other than grass, and when transporting the product to and from the working area.
10. Never operate the product with defective guards, or without safety devices, for example deflectors and/or grass catchers, in place.
11. Switch on the motor carefully according to the instructions and with your feet well away from the tine(s).
12. Do not tilt the product when switching on the motor, except if the product has to be tilted for starting. In this case, do not tilt it more than absolutely necessary and lift only the part which is away from the operator.
13. Do not start the motor when standing in front of the discharge opening.
14. Do not put hands or feet near or under rotating parts. Keep clear of the discharge opening at all times.
15. Never pick up or carry the product while the motor is running.
16. Stop the motor and disconnect the product from the power supply:
 - a. Before clearing blockages or unclogging the discharge opening.
 - b. Before checking, cleaning or working on the product.
 - c. After striking a foreign object. Inspect the product for damage and make repairs before restarting and operating the product.
 - d. If the product starts to vibrate abnormally (check immediately).
 - e. Whenever you leave the product.
17. Never use the scarifier without the grass catcher bag securely fitted.

Maintenance and storage

1. Keep all nuts, bolts and screws tight to be sure the product is in a safe working condition.
2. Allow the product to cool before storing in any enclosure.
3. Check the grass catcher frequently for wear or deterioration.
4. Examine the product regularly and replace worn or damaged parts to ensure safe use.

Additional safety warnings

1. Warning! Beware of sharp tines. The tines may continue to rotate after the motor is switched off.
2. Do not use the product if the cords are damaged or worn.
3. Do not connect a damaged cord to the supply or touch a damaged cord before it is disconnected from the supply. A damaged cord can lead to electrocution.
4. Keep extension cords away from the tines. The tines can cause damage to the cords and lead to contact with live parts.
5. If operating a garden power tool in a damp location is unavoidable, use a residual current device (RCD) protected supply. Use of an RCD reduces the risk of electric shock but does not eliminate it entirely, it is not recommended to use the tool in damp conditions.

Vibration and noise reduction

To reduce the impact of noise and vibration emissions, limit the time of operation, use low-vibration and low-noise operating modes and wear personal protection equipment. Take the following points into account to minimize the vibration and noise exposure risks:

1. Only use the product as intended by its design and these instructions.
2. Ensure that the product is in good condition and well maintained.
3. Use the correct application tools for the product and ensure that they are in good condition.
4. Keep a tight grip on the handles/grip.
5. Maintain this product in accordance with these instructions and keep it well lubricated (where appropriate).

Plan your work schedule to break up any high vibration tool use and allow for breaks, or time using tools that do not vibrate. Ideally you should spread use of a high vibration tool over a number of days.

Emergency

Familiarise yourself with the use of this product by means of this instruction manual. Make sure you are familiar with the safety directions and follow them to the letter. This will help to prevent risks and hazards.

1. Always be alert when using this product, so that you can recognise and handle risks early. Fast intervention can prevent serious injury and damage to property.
2. Switch off the machine and disconnect from the power supply if there is any malfunction. Have the product checked by a qualified specialist and repaired, if necessary, before use.

Residual risks

Even if you are operating this product in accordance with all the safety requirements, potential risks of injury and damage remain. The following dangers can arise in connection with the use of this product:

1. Health defects resulting from vibration emission if the product is being used over long periods of time or not adequately managed and properly maintained.
2. Injuries and damage to property due to broken application tools or the sudden impact of hidden objects during use.
3. Danger of injury and property damage caused by objects thrown by the machine.

WARNING! This product produces an electromagnetic field during operation!

This field may under some circumstances interfere with active or passive medical implants! To reduce the risk of serious or fatal injury, we recommend persons with medical implants consult their doctor and the medical implant manufacturer before operating this product!

VIBRATION

The European Physical Agents (Vibration) Directive has been brought in to help reduce hand arm vibration syndrome injuries to power tool users. The directive requires power tool manufacturers and suppliers to provide indicative vibration test results to enable users to make informed decisions as to the period of time a power tool can be used safely on a daily basis and the choice of tool. Further Advice can be found at www.hse.gov.uk

Vibration total values (triax vector sum) determined according to EN60335-2-92 and EN13683	
Vibration level for operation	Vibration emission value $a_h = 3.591 \text{ m/s}^2$
	Uncertainty $K = 1.5 \text{ m/s}^2$

The declared vibration emission value should be used as a minimum level and should be used with the current guidance on vibration.

Calculating the actual period of the actual period off use can be difficult and the HSE website has further information.

The declared vibration emission been measured in accordance with a standard listed test stated above and may be used to compare one tool with another. The declared vibration emission value may also be used in a preliminary assessment of exposure.



WARNING! The vibration emission value during actual use of the power tool can differ from the declared value depending on the ways in which the tool is used and dependant on the following examples and other variations on how the tool is used:

- How the tool is used and the materials being ground or cut.
- The tool being in good condition and well maintained.
- The use of the correct accessory for the tool and ensuring it is sharp and in good condition. The tightness of the grip on the handles.
- And the tool is being used as intended by its design and these instructions.

This tool may cause hand-arm vibration syndrome if its use is not adequately managed. This tool should not be used for extended periods of time.



WARNING! Identify safety measures to protect the operator that are based on an estimation of exposure in the actual conditions of use (taking account of all parts of the operating cycle such as the times when the tool is switched off and when it is running idle in addition to the trigger time). Note: The use of other tools may reduce or increase the user's total working period on this tool. Using another tool with a similar vibration emission would be equivalent to working for a longer period with this tool, while working with a machine with no vibration emission might be equivalent to taking a break.

Helping to minimise your vibration exposure risk

Maintain this tool in accordance with these instructions and keep well lubricated (where appropriate). Avoid using tools in temperatures of 10°C or less.

Plan your work schedule to spread any high vibration tool use across a number of days, or at least allow for breaks, or time spent using other tools that do not vibrate.

Health Surveillance

All employees should be part of an employer's health surveillance scheme to help identify any vibration related diseases at an early stage, prevent disease progression and help employees stay in work.

Double insulation:

The tool is double insulated. This means that all the external metal parts are electrically insulated from the mains power supply. This is done by placing insulation barriers between the electrical and mechanical components making it unnecessary for the tool to be earthed.

Important note:

Be sure the supply is the same as the voltage given on the rating plate. The tool is fitted with a two-core cable and plug. Remove the mains plug from the socket before carrying out any adjustment or servicing.

SYMBOLS



Warning



Read the instruction manual



Double insulation



Compliance with relevant safety standards



Wear eye protection
Wear ear protection
Wear breath protection



Safety Gloves



Safety Boots, steel toecap and non-slip soles



To avoid potential electric shock, do not use the unit in humid or wet conditions



Switch off! Remove plug from mains before cleaning or maintenance



Switch off! Remove plug from the mains immediately if the cable is damaged or cut.



Work across the face of slopes, never up and down.



Inspect the area where the product is to be used and remove all objects which could be thrown by the machine. If you find objects while operating stop the motor and remove them.



Beware of sharp tines. Tines continue to rotate after the motor is switched off. Remove the plug from the power supply before maintenance work or if the power cord is damaged.



Keep the supply cord away from the cutting device.



The cutting device continues to rotate after the product is switched off. Wait until all components have completely stopped before touching the product.



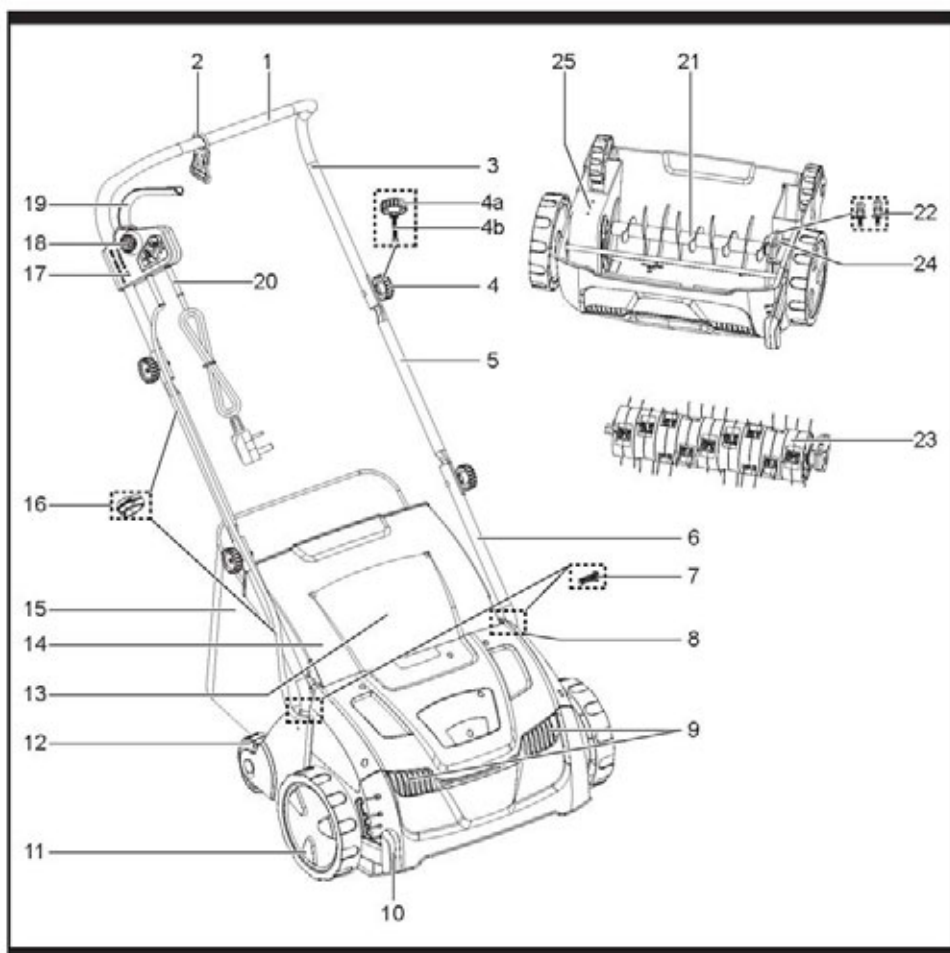
Objects thrown by the product could hit the user or other bystanders. Always ensure that other people and pets remain at a safe distance from the product when it is in operation. Children must not come near the area where the product is.



Waste electrical products should not be disposed of with household waste, please recycle where facilities exist. Check with your local authority or retailer for recycling advice.



Guaranteed sound power level



1. Handle
2. Cord strain relief
3. Upper handle bar
4. Mounting set (x4) for handle bar
 - 4a. Knob
 - 4b. Bolt
5. Middle handle bar
6. Lower handle bar
7. Screw (x2)
8. Support

9.	Air vents
10.	Depth/Height adjustment lever
11.	Wheel
12.	Castor
13.	Discharge opening
14.	Deflector guard
15.	Grass catcher
	15a. Bag
	15b. Frame
16.	Cable clip (x2)
17.	Switch box
18.	Lock-off button
19.	Start/stop lever
20.	Power cable
21.	Cutting device (scarifying cylinder)
22.	Mounting set for cutting device (x4)
	22a. Bolt
	22b. Spring washer
23.	Cutting device (raking cylinder)
24.	Bearing
25.	Drive shaft

TECHNICAL DATA

Rated voltage	230-240VAC 50Hz
Rated input power	1300W
No-load speed	2990 /min
Max. working width	320mm
Working height range	-10/-5/0/5/10 mm, 5 adjustments
Grass catcher volume	30 L
Protection class	IPX4
Net Weight	12.25 kg
Cable length	10m

NOISE AND VIBRATION DATA

Measured sound pressure level	84.5 dB(A), K=3 dB (A)
Measured sound power level	97.9 dB(A), K=3 dB (A)
Guaranteed sound power level	104 dB(A)
Vibration:	3.591m/s ² , K=1.5m/s ²

The declared vibration value has been measured in accordance with a standard test method and may be used for comparing one tool with another.

The declared vibration value may also be used in a preliminary assessment of exposure.

WARNING! The vibration emission value during actual use of the tool can differ from the declared value depending on the ways in which the tool is used. Identify safety measures to protect the operator that are based on an estimation of exposure in the actual conditions of use (taking account of all parts of the operating cycle such as the times when the tool is switched off and when it is running idle in addition to the trigger time).

The sound intensity level for the operator may exceed 85dB(A) and ear protection measures are necessary.

ACCESSORIES

Grass catcher with frame	1 SET
Cutting device (raking cylinder)	1PC
Bolt (M6)	4PC
Knob	4PC
Spring washer	4PC
Screw	2PC
Cable clamp	2PC

OPERATION INSTRUCTIONS



WARNING! Read all instructions carefully. Do not connect the scarifier to the mains supply power before it is completely assembled. Always wear gloves during assembly.

1. INTENDED USE

- 1). This scarifier and raker is designated with a rated input of 1300 Watts. Depending on the fitted cutting device, this product is intended for either scarifying and removing thatch from lawns or for raking in domestic and hobby gardens.
- 2). When used as a scarifier, this product works by scratching through and between the grass with specially adapted prongs that collect and remove any unwanted thatch from the lawn, whilst leaving the grass blades intact. At the same time the product scarifies the ground resulting in a better airing.
- 3). When used as a raker, the fine needles will scratch the surface of the lawn while simultaneously picking light debris for better oxygen absorption, airing and draining.
- 4). This product is not to be used in wet weather conditions and may not be used on overly dry, wet or unusually high grass, e. g. pasture grass or for shredding leaves.
- 5). This product is intended for private domestic use only, not for any commercial trade use. It must not be used for any purposes other than those described.

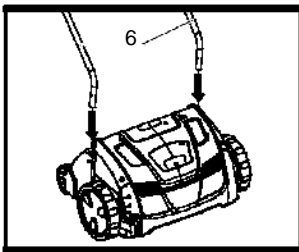


Fig. 1a

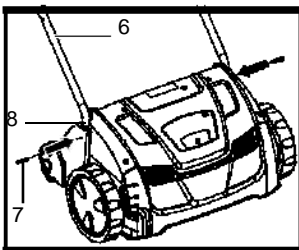


Fig. 1b

2. ASSEMBLY INSTRUCTIONS

Follow the operating instructions step-by-step and use the pictures provided as a visual guide to easily assemble the machine.

1). HANDLE BAR ASSEMBLY

- a). Align the lower handle bars (6) with the supports (8). Make sure the holes in the lower handle bars correspond with those in the supports (8) and secure the bars with one screw (7) each to the support (8). (See Fig. 1a, 1b).

b). Align the middle handle bars (5) to the lower ones (6). Make sure the holes in the handle bars (5, 6) correspond and secure them with one mounting set (4) on each side. (See Fig. 2).

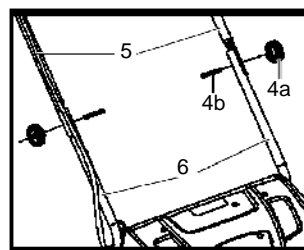


Fig. 2

c). Slide the cord strain relief (2) onto the upper handle bar (3). (See Fig. 3).

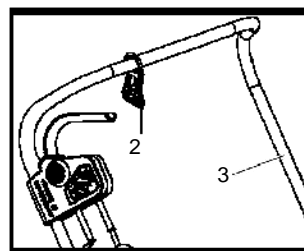


Fig. 3

d). Align the upper handle bar (3) with the middle handle bar (5) and secure them with one mounting set (4) on each side. (See Fig. 4a, 4b).

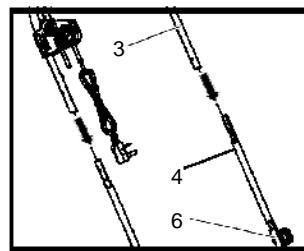


Fig. 4a

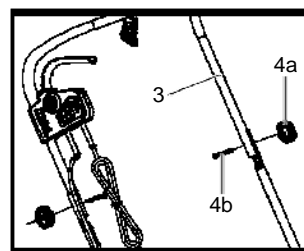


Fig. 4b

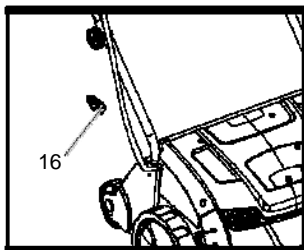


Fig. 5

e). Fix the cord with the cord clips (16) to the handle bar (Fig. 5).

2). GRASS CATCHER ASSEMBLY



WARNING! Do not attempt to use the product without the grass catcher attached as objects may be thrown.



WARNING! The product must be switched off and the cutting device must have stopped rotating before you attach or empty the grass catcher!



WARNING! Never use the scarifier without the grass catcher bag securely fitted.

NOTE: A full grass catcher will reduce the performance of this product. The grass catcher should be emptied when it is half full.

Always attach the grass catcher (15) to the product before operation.

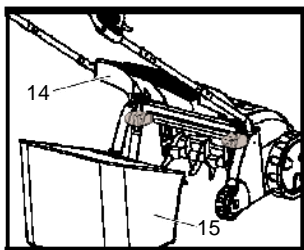


Fig. 6

- a). Open the deflector guard (14), hold it in position and align the hooks on the grass catcher (15) with the hinges on the back of machine. (See Fig. 6).
- b). Empty the grass catcher (15) frequently during use. Do not wait until it is completely full. We recommend emptying it when it is half full.
- c). Lift the deflector guard (14) and pull the grass catcher (15) off the hinges to remove it.
- d). Empty the collected material onto a compost heap and reattach it onto the product.

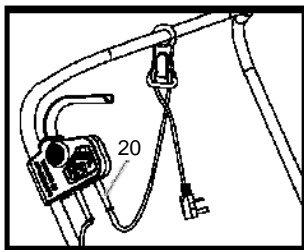


Fig. 7

3. CABLE ROUTING

- 1). Always route the electric mains cable away from the work area to prevent it from coming into contact with the cutting device. Plan your route before starting work. Start your work at the nearest point to the electrical outlet, and work away from it. This will keep the cable away from the cutting device and avoid it being accidentally cut. Keep the cable over your shoulder for added safety.
- 2). For cord strain relief of the cable, form a loop at the end of the main cable and bring this through the opening in the handle and insert it into the cord strain relief.

4. CUTTING DEPTH ADJUSTMENT



WARNING! Always switch the product off and remove the mains plug from the power supply before making any adjustments.

Adjust the depth according to the needs of your lawn. The most suitable depth depends on the kind of lawn and the actual height of the grass.

Please note when working on an unkempt lawn with thick thatch you should rake or scarify the lawn at a higher setting before going over it again at a lower setting, so as not to put too much strain on the motor.

1). Push the depth adjustment lever (10) towards the wheel (11), then move it forward or backward to adjust the cutting depth. (See Fig. 8a).

2). Adjust the lever (10) to one out of the five stages. Read the adjusted depth from the scale. (See Fig 8b and the table below).

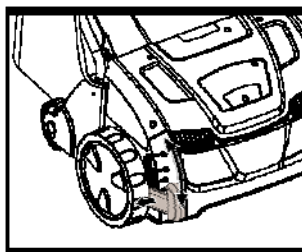


Fig. 8a

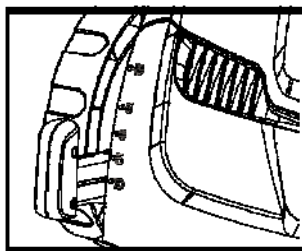


Fig. 8b

Scale / Position	Setting	Application			
		Depth	Scarifying	Depth	Raking
1	transport	+10 mm	for transportation and storage	+10 mm	for transportation and storage
2	minimal	+5 mm	scarifying a young or sensitive lawn, removing thin thatch layers, also use this setting when scarifying a second time in the Autumn	+10 mm	raking a young or sensitive lawn, removing thin thatch layers
3	middle	0 mm	scarifying healthy lawn, removing thatch	+5 mm	raking healthy lawn
4	deep	-5 mm	scarifying healthy lawn, removing thicker thatch	0 mm	maximum/deepest raking setting
5	maximal	-10 mm	maximum/deepest scarifying setting, removing thick thatch layers	-5 mm	do not use for raking

5. POWER CONNECTION



WARNING! Before operating the scarifier, ensure that the fastening elements are undamaged.

In order to reduce the risk of injuries, always switch off the motor and pull out the mains plug before working on the machine.

The product can be connected to any socket (with 230-240V alternating current). We recommend to always use the appliance via a Residual Current Device (RCD) with a tripping current of max. 30mA.

1). Mains leads on scarifiers are particularly susceptible to insulation damage. The causes of this include the following:

- The cable may be cut if the scarifier passes over it.
- Damage through crushing if the mains lead becomes stuck under doors or windows.
- Cracks caused by ageing of the insulation sheath.
- Kinks caused by incorrect fastening of the mains lead.

2). Such damaged mains leads should not be used under any circumstances as they may cause fatal injuries due to their damaged insulation sheath.

3). Always check the plug and cable and make sure they are in good condition before operation.

6. STARTING AND STOPPING

1). STARTING

The product is fitted with a lock-off button feature. To start the product, simply press the lock-off button (18) then fully press and hold the start/stop lever (19). The lock-off button can now be released. (See Fig.9)

NOTE: It is not necessary to maintain pressure on the lock-off button once the start/stop lever is squeezed and the motor is running. The lock-off button is a safety device to avoid accidental start-up of the device.

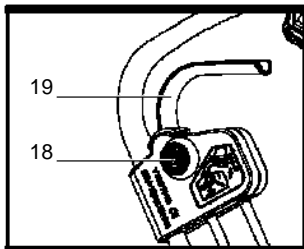


Fig. 9

2). STOPPING

The product will automatically stop once the start/stop lever is released. The lock-off button will have to be pressed and the start/stop lever squeezed to restart the motor.

7. OVERLOAD PROTECTION

The overload protection will be activated in the following circumstances:

- 1). A build up of scarified material around the cutting device.
- 2). If the material scarified is too large and causes the motor to work beyond its capacity.
- 3). Where there is too much resistance against the cutting device.

When the circuit breaker has been activated switch off the product and disconnect from the power supply.

Let the product cool down and eliminate the cause of the overload before using the product again.

8. GENERAL OPERATION



WARNING! In some countries regulations define at what time of the day and on what days machines are allowed to be used and what restrictions apply!



WARNING! If the product strikes a foreign object stop the motor! Switch the product off, disconnect it from the power supply and let it cool down. Inspect the product thoroughly for damage! Have any damage repaired before restarting!



WARNING! If the machine vibrates unusually during operation it may indicate that it is damaged! The product should be inspected and repaired immediately!

- 1). Check the product, its power cord and plug as well as accessories for damage before each use. Do not use the product if it is damaged or shows wear.
- 2). Double check that accessories are properly connected.
- 3). Push the product forward by its handle. Keep the handle dry to ensure safe support.
- 4). Ensure that the air vents are always unobstructed and clear. Clean them if necessary with a soft brush. Blocked air vents may lead to overheating and damage the product.
- 5). Switch the product off immediately if you are disturbed while working by other people entering the working area. Always let the product come to complete stop before releasing the handles.
- 6). Do not overwork yourself. Take regular breaks to ensure you can concentrate on the work and have full control over the product.
- 7). Mow the lawn before working and fertilise afterwards.
- 8). Make sure that the lawn is clear of stones, sticks, wire or other objects that could damage the product or its motor.

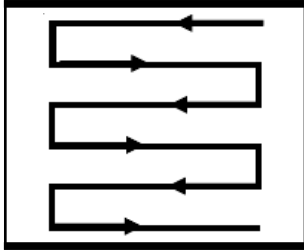


Fig. 10

- 9). Select the suitable working depth for the actual grass height.
- 10). Do not work with this product on a wet lawn because the grass may stick to the underside of the product, preventing the proper discharge of collected material, and could also cause you to slip and fall.
- 11). Slowly push the product forward. Move the product at an appropriate speed. Do not move it too fast or the discharge opening may get blocked and the engine may overload.
- 12). Work in slight overlapping rows. The most effective pattern for scarifying/raking lawns is straight lines along one of the sides. This will keep the rows even and ensures that all the lawn is scarified/raked without missing any spots. (See Fig. 10).
- 13). Circle around flower beds. When reaching a flower bed in the middle of the lawn, make a row or two around the circumference of the bed.
- 14). Pay special attention when changing direction.

SCARIFYING

Consider the weather when scarifying. Scarify the lawn with an increased depth setting during spring time between April and May as the lawn is better able to recover during this season. During a wet summer scarify again in late summer with a decreased depth setting. Do not scarify during periods of hot weather condition. During a dry rainless summer do not scarify a second time in autumn.

RAKING

In order that a healthy lawn can develop in the spring, it is necessary for greater amounts of air to penetrate the area around the roots of the grass. We recommend that you aerate the lawn every 4 - 6 weeks depending on the state of your lawn.

MAINTENANCE



WARNING! Before carrying out any repairs or servicing work, you must ensure that the product has been disconnected from the power supply. Repairs and maintenance work other than those described within this instruction manual may be performed only by an authorised service agent.

1. SERVICE AND STORAGE

To ensure long and reliable service, carry out the following maintenance regularly. Servicing and cleaning work on the product and the removal of the guards may only be carried out after the motor has been switched off and the plug disconnected from the power supply.

- 1). Regularly check for obvious defects such as loose, dislodged or damaged chain and guide bar, loose fixings and worn or damaged components.
- 2). Check that covers and guards are undamaged and correctly fitted. Carry out necessary maintenance or repairs before using the product.
- 3). If the cutting device should happen to fail despite the care taken in manufacturing and testing, repair should be carried out by an authorised specialist.
- 4). Do not clean the product while it is running.
- 5). Ensure that all the fastening elements (screws, nuts, etc.) are tight at all times so that you can safely work with the product.
- 6). Check the product frequently for signs of wear. Replace worn or damaged parts.
- 7). Store your product in a dry place. To ensure a long service life all screw parts should be cleaned and then oiled.
- 8). Clean the product with a brush or cloth. Do not use any solvents or water to remove dirt.
- 9). The component that is subject to most wear is the cutting device. You should therefore check the condition of the cutting device and its mounting at regular intervals.
 - If the cutting device is worn or blunt it must be replaced immediately.
 - If the product starts to vibrate excessively, this means that the cutting device has not been balanced correctly or has suffered deformation due to impacts. In this case it must be repaired or replaced.

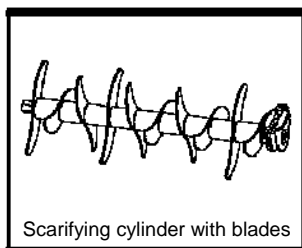


Fig. 11a

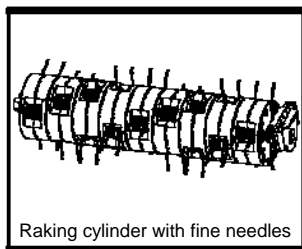


Fig. 11b

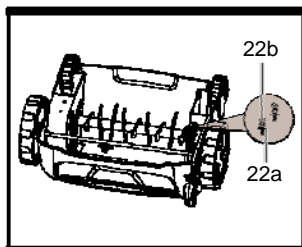


Fig. 12a

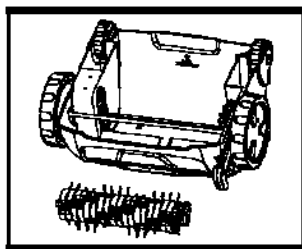


Fig. 12b

2. REPLACING/CHANGING THE CUTTING DEVICE



WARNING! Always switch the product off, disconnect it from power supply and let it cool down before changing/replacing the cutting device!



WARNING! Always use the correct cutting device according to the intended use! Observe the technical requirements of this product (see the Technical specifications section) when purchasing and using cutting devices!



WARNING! Cutting devices are very sharp and become hot during use! Handle them carefully!

Wear safety gloves when handling cutting devices in order to avoid injuries like burns and cuts!



WARNING! Make sure the two bolts are completely tight before using the product, don't use the product if any of the bolts are missing or loose.

If a bolt thread is damaged, it must be replaced before the machine can be used safely. You can replace it with one of a suitable size.

The product has two functions, scarifying or raking. The scarifying cylinder is preassembled on the product. The raking cylinder is included in the supply box. The cylinder can be changed according to the different applications. (See Fig. 11a, 11b)

- 1). Remove the grass catcher.
- 2). Place the product upside down on a flat stable ground to access the underbody.
- 3). Loosen the two bolts (22a) with a suitable wrench, remove them together with the spring washers (22b) and the attached cutting device (21 or 23). (See Fig. 12a).
- 4). To remove the cutting device, first lift the bearing and then pull it off of the drive shaft (25).

- 5). Align and insert the respective cutting device: Slide the hex nut into the socket of the driving shaft (25) and fix the bearing to the support with the bolts (22a) and spring washers (22b). (See Fig. 12b).

3. AFTER USE

- 1). Switch the product off, disconnect it from the power supply and let it cool down.
- 2). Check, clean and store the product as described below.

4. GRASS CATCHER

- 1). Inspect the grass catcher (15) before each use. Do not use it if you find any damage.
- 2). Clean the grass catcher (15) after operation. Let the grass catcher dry thoroughly before storing to avoid mildew.

5. TRANSPORTATION

- 1). Switch the product off and disconnect it from the power supply before transporting it anywhere.
- 2). Attach transportation guards, if applicable.
- 3). Adjust the cutting depth to the transportation setting (refer to "CUTTING DEPTH ADJUSTMENT").
- 4). Always transport the product using its handle.
- 5). Protect the product from any heavy impact or strong vibrations which may occur during transportation in vehicles.
- 6). Secure the product to prevent it from slipping or falling over.

TROUBLESHOOTING



WARNING! Only perform the steps described in these instructions! All further inspection, maintenance and repair work must be performed by an authorised service specialist! Contact your local authorised service dealer if the problem cannot be solved by yourself!



WARNING! If the product does not perform properly, makes unusual sounds, the motor does not start or stop as described, the cutting device does not work properly, or any other irregularity or malfunction occurs, do not attempt to repair the product by yourself. Please contact customer services or your local authorised service dealer.

Problem	Possible cause	Fault correction
Product does not start	Not connected to power supply	Connect to power supply
	Power cord or plug is defective	Check by a specialist electrician.
	Other electrical defect to the product	Check by a specialist electrician.
	Lock-off button not pressed	Press lock-off button first, then the start/stop lever
Product does not reach full power	Power source's (e.g. generator) voltage is too low	Connect to another power source
	Air vents are blocked	Clean the air vents
Poor results	Cutting device is dull/damaged	Replace with a new one
	Scarified material exceeds capacity	Only scarify materials according to the capacity of the product
	Scarifying depth is incorrect	Adjust depth

ENVIRONMENTAL PROTECTION



Waste electrical products should not be disposed of with household waste. Please recycle where facilities exist. Check with your Local Authority or retailer for recycling advice.

For further information visit:
www.recycle-more.co.uk.

UK PLUG REPLACEMENT

The fuse in the main plug of your garden power tool should always be replaced with one of identical rating. Check the voltage given on your garden power tool matches the supply voltage. The garden power tool is supplied with a fitted plug, however if you should need to fit a new plug follow the instructions below.

IMPORTANT:

The wires in the mains lead are coloured in accordance with the following code:

Blue – Neutral

Brown – Live.

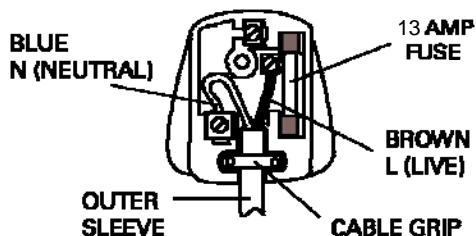
As the colours of the wires in the mains lead of this appliance may not correspond with the coloured markings identifying the terminals in your plug, proceed as follows:

The wire which is coloured blue must be connected to the terminal which is marked with N.

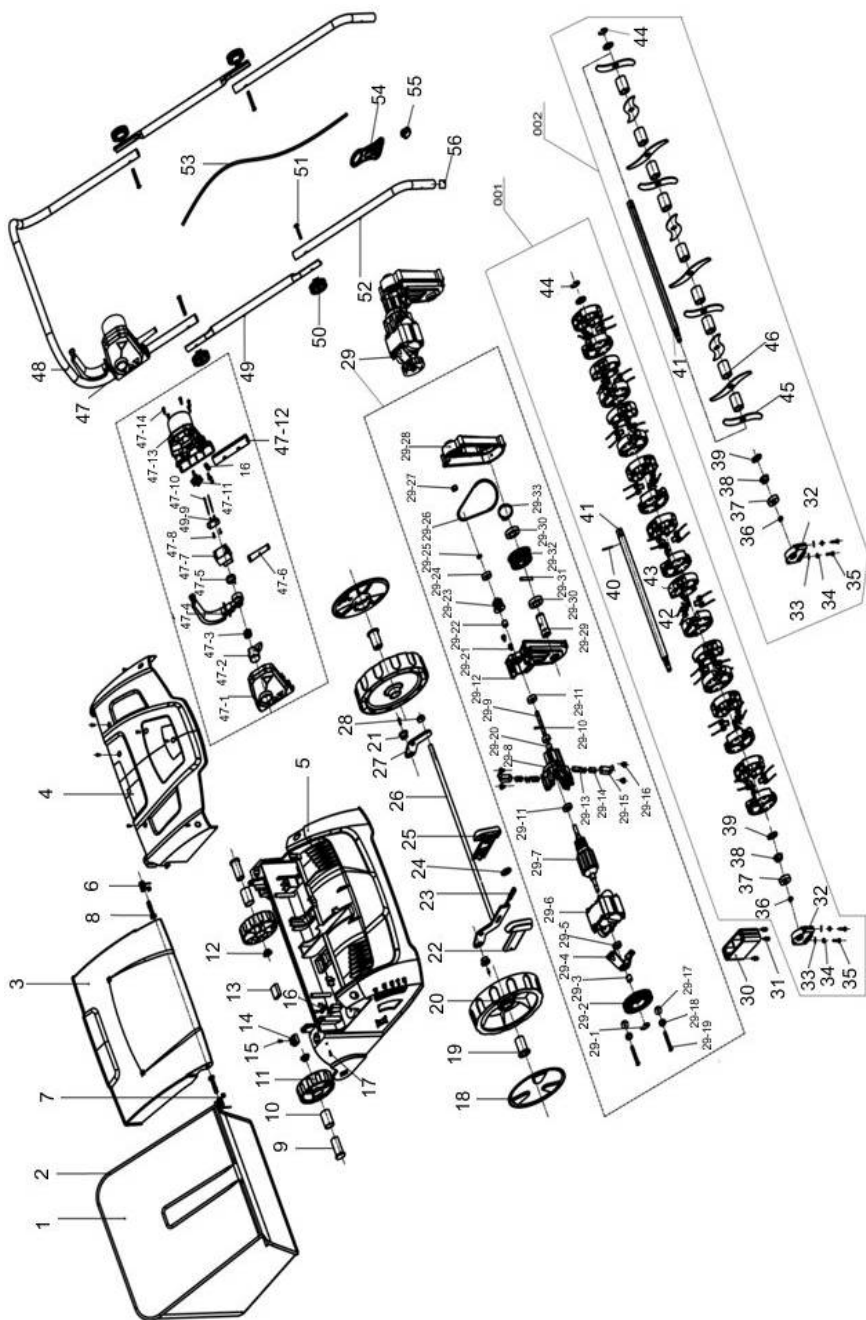
The wire which is coloured brown, must be connected to the terminal, which is marked with the letter L.

Warning: Never connect live or neutral wires to the earth terminal of the plug. A 13AMP (BS1363/A) plug must be used and a 13AMP fuse must be fitted.

NOTE: If a moulded plug is fitted and has to be removed take great care in disposing of the plug and severed cable, it must be destroyed to prevent engaging into a socket. If the supply cord is damaged it must be replaced by a service agent to ensure the machine can be used safely.



PARTS DIAGRAM AND LIST



Item No	Part No	Description	Qty
1	TH195-1	Collection Bag	1
2	TH195-2	Collection Bag Frame	1
3	TH195-3	Rear Cover	1
4	TH195-4	Motor Cover	1
5	TH195-5	Body	1
6	TH195-6	Right Spring	1
7	TH195-7	Left Spring	1
8	TH195-8	Plastic Pin	2
9	TH195-9	Rear Wheel Plug	2
10	TH195-10	Rear Wheel Axle Sleeve	2
11	TH195-11	Rear Wheel	2
12	TH195-12	Rear Axle Cap	2
13	TH195-13	Circuit Board	1
14	TH195-14	Terminal Strip	1
15	TH195-15	Self-Taping Screw 3*18	1
16	TH195-16	Cable Clamp	1
17	TH195-17	Self-Taping Screw 4*25	2
18	TH195-18	Front Wheel Trim	2
19	TH195-19	Front Wheel Plug	2
20	TH195-20	Front Wheel	2
21	TH195-21	Front Axle Cap	2
22	TH195-22	Height Adj Left Handle Cover	1
23	TH195-23	Spring	1
24	TH195-24	Washer	1
25	TH195-25	Height Adj Right Handle Cover	1
26	TH195-26	Front Axle Assembly	1
27	TH195-27	Junction Plate	1
28	TH195-28	Lock Nut	1
29	TH195-29	Motor Assembly	1
29-1	TH195-29-1	E-Retaining Ring	1
29-2	TH195-29-2	Fan	1
29-3	TH195-29-3	Fan Shaft Sleeve	1
29-4	TH195-29-4	Back Support	1
29-5	TH195-29-5	Bearing	1
29-6	TH195-29-6	Capsitor	1
29-7	TH195-29-7	Rotor	1
29-8	TH195-29-8	Front Support	1
29-9	TH195-29-9	Gear Shaft	1
29-10	TH195-29-10	Small Pulley Pin	1
29-11	TH195-29-11	Bearing	2
29-12	TH195-29-12	Transmission Support	1
29-13	TH195-29-13	Brush	2
29-14	TH195-29-14	Copper Brush Holder	2
29-15	TH195-29-15	Brush Holder	2
29-16	TH195-29-16	Self-Taping Screw 4*12	4
29-17	TH195-29-17	Washer	2
29-18	TH195-29-18	Spring Washer	2
29-19	TH195-29-19	Screw	2
29-20	TH195-29-20	Multi-Roll Bearing	1

29-21	TH195-29-21	Self-Taping Screw 4*14	3
29-22	TH195-29-22	Shaft Sleeve	1
29-23	TH195-29-23	Small Pulley Assembly	1
29-24	TH195-29-24	Bearing	1
29-25	TH195-29-25	Spring Washer	1
29-26	TH195-29-26	Belt	1
29-27	TH195-29-27	Nut M8	1
29-28	TH195-29-28	Transmission Case Cover	1
29-29	TH195-29-29	Large Belt Wheel Axle	1
29-30	TH195-29-30	Bearing	2
29-31	TH195-29-31	Large Pulley Pin	1
29-32	TH195-29-32	Large Pulley	1
29-33	TH195-29-33	Shaft Retainer	1
30	TH195-30	Bearing Seat	1
31	TH195-31	Self-Taping Screw 4*20	4
001	TH195-001	Rake Assembly	1
002	TH195-002	Scarifier Assembly	1
32	TH195-32	Up Bearing Pedestal	4
33	TH195-33	Bolt	2
34	TH195-34	Washer	4
35	TH195-35	Washer	4
36	TH195-36	Shaft retainer	2
37	TH195-37	Bearing	2
38	TH195-38	Flange Nut	2
39	TH195-39	Washer	4
40	TH195-40	Rake Shaft Pin	1
41	TH195-41	Axle	2
42	TH195-42	Rake Spring	27
43	TH195-43	Rake Support	18
44	TH195-44	Split washer	2
45	TH195-45	Blade	10
46	TH195-46	Cover	9
47	TH195-47	Switch Box Assembly	1
47-1	TH195-47-1	Switch Housing	1
47-2	TH195-47-2	Switch Button	1
47-3	TH195-47-3	Button Spring	1
47-4	TH195-47-4	Trigger	1
47-5	TH195-47-5	Cable Sheath	1
47-6	TH195-47-6	Cable Sleeve	1
47-7	TH195-47-7	Switch	1
47-8	TH195-47-8	Self-Tapping Screw 3*8	2
47-9	TH195-47-9	Fixed Plate	1
47-10	TH195-47-10	Connecting Wire	2
47-11	TH195-47-11	Plug	1
47-12	TH195-47-12	Switch Bush	1
47-13	TH195-47-13	Switch Box Blow Cover	1
47-14	TH195-47-14	Self Tapping Screw 4*20	30
48	TH195-48	Upper Handle	1
49	TH195-49	Middle Handle	2
50	TH195-50	Handle Knob	4

51	TH195-51	Screw 6*45	4
52	TH195-52	Lower Handle	2
53	TH195-53	Electric Cable	1
54	TH195-54	Cable Holder	1
55	TH195-55	Cable Clamp	2
56	TH195-56	Handle Inlay	2

GUARANTEE

This Handy product carries a guarantee of 12 months. If your product develops a fault within this period, you should, in the first instance contact the retailer where the item was purchased.

This guarantee specifically excludes losses caused due to:

- Fair wear and tear
- Misuse or abuse
- Use in contravention of the instructions.
- Use when the product has been subject to unauthorized modifications or alterations.
- Commercial use.
- Lack of routine maintenance
- Failure of consumable items (such as batteries)
- Accidental damage
- Cosmetic damage
- Failure to follow the manufacturer's guidelines
- A change in circumstances, leading to the customer no longer needing the goods

This guarantee does not affect your statutory rights. This guarantee is only valid in the UK. For any enquiries relating to the guarantee please refer to your retailer.

If your retailer are unable to assist you can also contact Customer Service on 01793 333212 or email: customerservice@handydistribution.co.uk

If the issue cannot be resolved over the telephone or by email, you may be referred to your local approved service dealer.

Please keep your sales receipt as proof of purchase.

Guarantor Handy Distribution SN3 4NS





EC Declaration of Conformity

We, Importer
Handy Distribution
SN3 4NS

Declare that the product
Designation: 1300w 2 in 1 Scarifier and Raker
Model: THSR

Complies with the following directives:
2006/42/EC / Annex 1 - Machinery Directive
2006/95/EC - Low Voltage Directive
2004/108/EC - Electromagnetic Compatibility Directive

The conformity assessment procedure followed was in accordance with
Directive 2006/42/EC Annex 1

Name of the Notified Body: TÜV Rheinland LGA Products GmbH, Tillystraße 2, 90431,
Nürnberg

Standards and technical specifications referred to:
2006/42/EC / Annex 1/05.06 - EN 60335-1: 2002+A1+A11+A12+A2+A13+A14,
EN 60335-2-92: 2005
IEC 60068-2-2, IEC 60083:1975, IEC 60695-2-11, IEC 60695-10-2, IEC 60695-11-10,
IEC 60999-1
2006/95/EC – EN62233:2008
ZEK 01.2-08/12.08
2004/108/EC - EN 55014-1: 2006+A1, EN55014-2:1997/A1+A2, EN 61000-3-
2:2006+A1+A2,
EN 61000-3-3/2008

Authorised signatory and technical file holder

Date: 22/02/2013

Signature:

Name / title: Mr. Simon Belcher / Managing Director
Hobley Drive, Stratton St Margaret, Swindon, Wiltshire, SN3 4NS.

To order spare parts and see the complete range of garden machinery and garden equipment from Handy, visit:

www.thehandy.co.uk

Spares & Support: 01793 333212

