

Deutsch	3
English	13
Français	23
Italiano	34
Nederlands	45
Español	56
Português	67
Dansk	78
Norsk	88
Svenska	98
Suomi	108
Ελληνικά	119
Türkçe	130
Русский	140
Magyar	152
Čeština	163
Slovenščina	174
Polski	185
Românește	196
Slovenčina	207
Hrvatski	218
Srpski	228
Български	239

Register and win!
www.kärcher.com





Please read and comply with these original instructions prior to the initial operation of your appliance and store them for later use or subsequent owners.

- Before first start-up it is definitely necessary to read the safety indications Nr. 5.956-345!
- The non-compliance of the operating and safety instructions may lead to damages of the appliance and to dangers for the operator and other persons.
- In case of transport damage inform vendor immediately

Contents

Contents	EN . . . 1
Environmental protection . .	EN . . . 1
Safety instructions	EN . . . 1
Notes on the operation . . .	EN . . . 2
Device elements	EN . . . 3
Start up	EN . . . 4
Operation	EN . . . 4
How to Use the Accessories	EN . . . 6
Transport	EN . . . 7
Storing the device	EN . . . 7
Maintenance and care . . .	EN . . . 8
Troubleshooting	EN . . . 8
Warranty	EN . . . 9
Accessories and Spare Parts	EN . . . 9
EC Declaration of Conformity	EN . . . 9
Technical specifications . . .	EN . . . 10

Environmental protection



The packaging material can be recycled. Please do not place the packaging into the ordinary refuse for disposal, but arrange for the proper recycling.



Old appliances contain valuable materials that can be recycled. Please arrange for the proper recycling of old appliances. Please dispose your old appliances using appropriate collection systems.

Notes about the ingredients (REACH)

You will find current information about the ingredients at:

www.kaercher.com/REACH

Safety instructions

Symbols in the operating instructions

Danger

Immediate danger that can cause severe injury or even death.

Warning

Possible hazardous situation that could lead to severe injury or even death.

Caution

Possible hazardous situation that could lead to mild injury to persons or damage to property.

Symbols on the machine



Steam

CAUTION - Danger of scalding

Proper use

- The machine is designed for generating steam and vacuum cleaning liquids and solid substances according to the description in this Operating Instructions Manual.
- This appliance is suitable for commercial use.

Safety Devices

Safety devices serve for the protection of the user and must not be put out of operation or bypassed with respect to their function.

Pressure controller

The pressure controller keeps the boiler pressure during the operation as constant as possible. The heating is turned off if the maximum operating pressure of 4 bar is reached in the boiler and is reactivated in case of a pressure drop in the boiler due to steam tapping.

Water shortage thermostat

When the water in the boiler becomes exhausted, the temperature of the heating increases. The low-water thermostat turns off the heating, and the red low-water indicator lamp "water shortage" lights up. The heating is prevented from being turned on again until the boiler has cooled down or been refilled with water.

Safety thermostat

If the low-water thermostat fails and the appliance overheats, the safety thermostat turns off the steam cleaner.

Please contact your local KÄRCHER customer service to arrange for the reset of the safety thermostat.

Safety lock

The safety lock seals the boiler against the steam pressure that builds up in the boiler. If the pressure controller is defective and the steam pressure in the boiler rises above 5.7 bar, a pressure control valve in the safety lock opens, and steam is emitted through the lock to the outside.

Please contact your local KÄRCHER customer service before you put the appliance into operation again.

Notes on the operation

Refreshing textiles

Prior to treatment with the steam cleaner, always check the reaction of the textiles in an inconspicuous location: Steam at first, then let dry and then check for colour or shape changes.

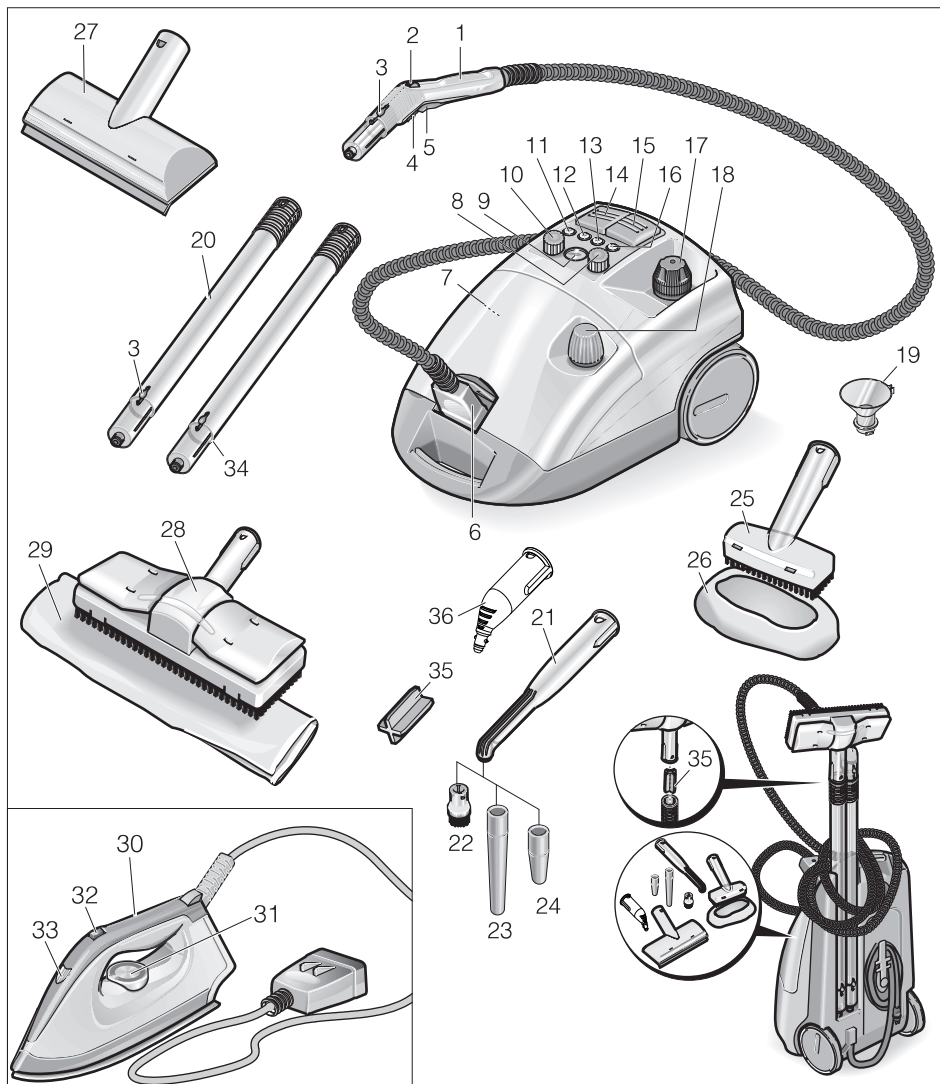
Cleaning of Coated or Lacquered Surfaces

When cleaning painted or plastic-coated surfaces, as found on kitchen and living room furniture, doors, parquet; wax, furniture polish, plastic surfaces or paint can come loose or stains can be created. When cleaning these surfaces, briefly steam a cloth and wipe the surfaces with it.

Cleaning of Glass

In case of low outside temperatures, especially in the winter, warm up the window pane by slightly steaming the entire glass surface. This will prevent tensions on the surface which might lead to glass breakage.

Device elements



- | | |
|---|--|
| 1 Steam gun | 9 Temperature display |
| 2 Handwheel for steam quantity controller | 10 Rotary knob for steam quantity controller |
| 3 Unlocking button | 11 Indicator lamp - Descaling (white) |
| 4 Lock (child-proof lock) | 12 Indicator lamp "water shortage additional tank" (red) |
| 5 Steam switch | 13 Indicator lamp - heating (yellow) |
| 6 Steam plug | 14 Switch - heating (ON/OFF) |
| 7 Reset key - Descaling | 15 Switch - steam supply |
| 8 Rotary knob for VAPOHYDRO regulation | |

- 16 Indicator lamp - water shortage steam boiler (red)
- 17 Safety lock
- 18 Container closure
- 19 Funnel inlet
- 20 Extension tubes (two tubes)
- 21 Detail nozzle (180 mm)
- 22 Round brush
- 23 Extension piece
- 24 Power nozzle (red)
- 25 Hand nozzle
- 26 Terry cloth cover
- 27 Window nozzle (option)
- 28 Floor nozzle
- 29 Terry floor cloth
- 30 Iron (option)
- 31 Temperature controller
- 32 Switch - steam ironing
- 33 Indicator lamp - steam iron heating
- 34 Support of extension pipe
- 35 Floor nozzle holder
- 36 Detail nozzle (120 mm)

Start up

Attaching the Accessories

- Tightly insert the steam plug into the appliance. The pins of the plug must lock into the cover of the appliance connector.
- Connect the required accessories (floor nozzle, hand nozzle or detail nozzle) to the steam gun. Slide the parts together until the locking button locks into the steam gun.
- Use the extension pipes if necessary. Slide the parts together until the respective locking button locks into place.
- Press down on the locking knob to separate the accessories.

Fill up with water

- Remove the safety cap from the device.
- Fill the boiler with a maximum of 2 liters of fresh tap water using the filling funnel. You can cut down the heating-up time by using warm water.

Note

The boiler can be filled up to 2 cm below the edge of the filler neck if the appliance is in horizontal position.

⚠ Warning

Do not use detergent.

- Screw the safety cap back onto the device.

Additional tank

The additional tank can be filled if the work will last for an extended period of time.

- Unscrew the container lid from the additional tank.
- Fill the additional tank with a maximum of 2 liters of fresh tap water using the filling funnel.
- Screw the container lid onto the additional tank.

Operation

Temperature display

The temperature display shows whether the operation is taking place in the correct temperature range (green range).

Turning on the Appliance

- Insert the mains plug into the socket.
- Switch on the appliance by means of the switch for steam supply and the heating switch. The indicator lamps illuminate.

Note

The full heating performance is only available if the steam plug is connected to the appliance during the heating-up period.

Once the indicator lamp "heating" has gone out, the system is ready for use.

Note

Do not place the appliance into an upright position while it is running. Otherwise, the heating will turn off automatically after a brief period and the indicator lamp "water shortage" will illuminate in red.

- ➔ Switch the heating off by means of the switch while the appliance is being transported.
- ➔ Actuate the steam switch, steam will escape. Always direct the steam gun at a separate piece of cloth until the steam is emitted evenly.
- The heating of the steam cleaner is turned on during operation of the appliance (indicator lamp glows yellow) in order to maintain the pressure in the boiler at a constant level.
- If the device is switched on without water, initially, the indicator lamp "heating" will glow yellow until the water shortage thermostat switches the heating off. After that, the indicator lamp "water shortage" glows red.

steam quantity controller via rotary knob on the appliance

- ➔ Regulate the steam volume during work with standard accessories or with the iron via the rotary knob on the appliance.

Steam quantity controller via handwheel on the steam gun

- ➔ Regulate the steam volume during work with standard accessories via the handwheel on the steam gun. The rotary knob on the appliance becomes inactive.

Note

If the handwheel is set to a small quantity of steam, steam may continue to be emitted after the steam switch has been released until the pressure in the steam hose has been reduced. This pressure can be relieved even faster by briefly setting the steam value regulation to a large volume.

VAPOHYDRO regulation with rotary knob

- In wet areas, you can also wash away the dirt instead of absorbing it with the cloth. For this, set the moisture of the steam to regulate via VAPOHYDRO regulation by means of the rotary knob. The higher the humidity of the steam, i.e. the more water is contained in the steam jet, the higher the rinsing effect. If you turn the rotary knob toward "+" steam quantity, a hot water jet is emerged, and the highest rinsing effect is achieved.
- We recommend using the VAPOHYDRO in connection with the detail nozzle for cleaning the bathroom.
- VAPOHYDRO regulation when working with cloths (floor nozzle, hand nozzle) with the rotary knob all the way to "-" in order to have as little moisture in the steam jet as possible. The dirt loosening power of the steam is improved this way.

Note

If you turn the rotary knob for the VAPOHYDRO regulation to "+", the boiler is emptied more quickly.

Refilling Water

Note

Once the water in the additional tank is used up, there will be a signal emitted and the indicator lamp for "water shortage in additional tank" illuminates red.

- ➔ Fill the additional tank with a maximum of 2 liters of fresh tap water using the filling funnel.

Once the indicator lamp "heating" has gone out, the system is ready for use.

Note

If the pump does not produce any water in spite of the full additional tank, the boiler must be descaled.

Removing the Accessories

⚠ Warning

Hot water may drip out of the accessory parts while you are detaching them! Never detach accessory parts while steam streams out - risk of scalding!

Turning Off the Appliance

- ➔ Switch the appliance off at the switches.
- ➔ Lift the cover of the appliance connector and disconnect the steam plug from the appliance.
- ➔ Disconnect the mains plug from the socket.

Note

You can leave the residual water in the appliance.

How to Use the Accessories

Steam gun

Application examples for use of the steam gun without accessories:

- to remove odours and wrinkles from hanging clothes by steaming them at a distance of 10 to 20 cm.
- to remove dust from plants. Here, keep a distance of 20-40 cm.
- for moist dusting, by briefly steaming the cloth and wiping the furniture with it.

Detail nozzle

- The closer you hold the nozzle to the dirty spot, the higher the cleaning effect as temperature and pressure of the steam reach their maximum values immediately when they are emitted from the nozzle.
- The detail nozzle with the different attachment is suited for cleaning difficult to access points, such as corners, grooves, etc. as well as blinds, central heaters, toilets, stainless steel, mirrors, mirrors, fixtures, coated and enameled surfaces, loosening of stains.
- The power nozzle increases the emission speed of the steam. Therefore, it is well-suited for cleaning very tough dirt, blowing out corners, grooves, etc.

Note

The round brush is not suited for the cleaning of delicate surfaces.

Floor nozzle

- Suited for all washable wall and floor coverings, e.g. stone floors, tiles and PVC floors. Work slowly on very dirty surfaces to allow the steam to act on the dirt for a longer period of time.
- Flip and replace floor cloth regularly to improve the dirt pickup.

Note

Detergent residue or care emulsions that are still present on the surfaces to be cleaned, can lead to smears when steam cleaned. However, these will disappear with repeated cleaning procedures.

- ➔ Attach the floor cloth to the floor nozzle.

- 1 Fold the floor cloth the long way and place the floor nozzle on top of it.
- 2 Open holding clamps.
- 3 Place the cloth ends into the openings.
- 4 Close the holding clamps.

⚠ Warning

Do not insert fingers between the clamps.

Hand nozzle

Suited for small washable areas, shower stalls, mirrors or furniture cloth material.

- ➔ Pull the terry cloth cover over the manual nozzle.

Iron (option)

Order no. 6.959-262.0

- ➔ Connect the steam plug of the iron to the appliance.

Steam ironing

- ➔ VAPOHYDRO regulation with rotary knob, turn all the way to "-".
- ➔ Set the temperature controller at least to 3 for ironing all types of fabrics. The emitted steam prevents the fabric from becoming overheated.

Once the indicator lamp on the iron has gone out, the system is ready for use.

Note

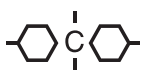


The higher the temperature setting, the dryer and more invisible the steam; however, the steam volume remains the same.

- Push the switch for steam ironing to the front: Steam will escape continuously.
- Push the switch for steam ironing to the rear: Steam push emitted.
- ➔ First, direct the steam gun at a separate piece of cloth until no more water is emitted.
- ➔ Set the steam quantity controller on the appliance to the desired quantity of steam.

You can hold the iron in an upright position to apply steam to curtains, dresses, etc.

Dry ironing

- ➔ Ironing without steam: Switch on the appliance and switch off the the heating switch.
- ➔ Set the temperature controller on the iron to the desired fabric.

Man-made fibre	Wool	Linen
		

Window nozzle (option)

Order no. 4.130-145.0

- ➔ Apply steam to the glass surface from a distance of approximately 20 cm until the surface is moistened evenly.
- ➔ Switch off the steam supply.
- ➔ Strip the glass surface in straight lines from the top to the bottom using the rubber lip.
- ➔ Wipe the rubber lip and the bottom edge of the window dry after each strip.

Wallpaper remover (optional)

Order no. 2.863-076.0

You can use the wallpaper remover with the steam cleaner to remove wallpapers.

- ➔ Apply wallpaper remover to the edge of a wallpaper length and let the steam settle in until the wallpaper is fully moistened (approx. 10 seconds).

- ➔ Reset wallpaper remover without switching off. Lift the soaked piece of wallpaper using a flat trowel, and pull it off the wall.

In case of woodchip wallpaper that has been painted several times, the steam may not be able to soak the wallpaper. If this happens, you need to prepare accordingly with a nail roller.

Transport

Caution

Risk of injury and damage! Observe the weight of the appliance when you transport it.

Transporting the device

When working with extension pipes and the floor nozzle the appliance can be transported easily, e.g. up and down steps.

- ➔ Switch off the heating at the switch.
- ➔ Place the appliance vertically.
- ➔ Hook the extension pipe with the holder to the bottom side of the appliance.

Storing the device

Caution

Risk of injury and damage! Note the weight of the appliance in case of storage.

This appliance must only be stored in interior rooms.

Storing the Appliance

- ➔ Place the manual nozzle, detail nozzles and small parts into the accessories storage box.
- ➔ Wrap the cable around the holder on the floor of the appliance. Insert the extension pipes individually into the recesses on the appliance floor.

Note

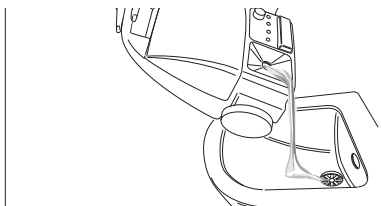
Always allow the brushes to cool down for a sufficient period of time to avoid a deformation of the bristles.

Maintenance and care

⚠ Danger

Always disconnect the mains plug and allow the steam cleaner to cool down before performing any maintenance work.

Rinsing the boiler



Rinse the boiler of the steam cleaner boiler at the latest after 5 boiler fillings.

- Fill the boiler with water and shake it strongly. This dissolves lime scaling residing on the boiler bottom.
- Empty water out.

Descaling the boiler

Note

If you always use usual commercial distilled water it is not necessary to descale the boiler.

As limescale also builds up on the boiler walls, we recommend to descale the boiler using KÄRCHER Bio descaler RM 511. The KÄRCHER Bio descaler RM 511 is a product based on citric acid, which is completely biodegradable.

Caution

Only use products approved by KÄRCHER to exclude any damages of the appliance.

- Disconnect the mains plug from the socket.
- Completely empty the steam boiler.
- Completely dissolve two bags of descaler by stirring it in 2 liters of warm water.
- Fill the descaling solution into the boiler and allow to react for approximately 8 hours.

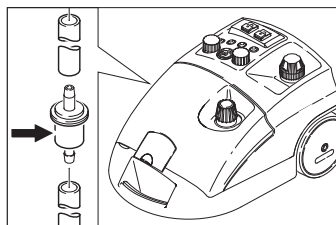
⚠ Danger

Do not screw the steam boiler safety cap on the appliance during the descaling. Do not use the appliance as long as there is descaling agent in the boiler.

- Pour out the descaling solution. Rinse the boiler at least two more times with cold water to ensure that there is no residue left behind in the boiler.
- Turn on the appliance.
- Press the reset key until the indicator lamp "Descaling" goes off.

The appliance is ready for use again. After approx. 50 operating hours, the indicator lamp "Descaling" shows the next necessary descaling process.

Filter replacement



Using soiled water can occlude the filter. This is shown by extraordinarily long run times of the pump or a complete malfunction.

- Replace the filter.

Troubleshooting

⚠ Danger

Always disconnect the mains plug and allow the steam cleaner to cool down before performing any maintenance work.

⚠ Danger

Repair works may only be performed by the authorized customer service.

Indicator lamp "water shortage" glows red

- Refill water.

Indicator lamp "Descaling" glows white

- Decalcify appliance.

Warranty

The warranty terms published by our competent sales company are applicable in each country. We will repair potential failures of your accessory within the warranty period free of charge, provided that such failure is caused by faulty material or defects in fabrication. In the event of a warranty claim please contact your dealer or the nearest authorized Customer Service center. Please submit the proof of purchase.

Accessories and Spare Parts

- Only use accessories and spare parts which have been approved by the manufacturer. The exclusive use of original accessories and original spare parts ensures that the appliance can be operated safely and trouble free.
- At the end of the operating instructions you will find a selected list of spare parts that are often required.
- For additional information about spare parts, please go to the Service section at www.kaercher.com.

Special accessories

Only use special accessories approved by the manufacturer.

Name	Part no.:
Bio descaler RM 511 (3x 100 g of powder)	6.290-239.0
Caddy cart	6.962-239.0
Round brush kit with brass bristles	2.863-075.0
Round brush kit	2.863-077.0
Micro fibre cloth	6.905-921.0

EC Declaration of Conformity

We hereby declare that the machine described below complies with the relevant basic safety and health requirements of the EU Directives, both in its basic design and construction as well as in the version put into circulation by us. This declaration shall cease to be valid if the machine is modified without our prior approval.

Product: Steam cleaner

Type: 1.092-xxx

Relevant EU Directives

2006/95/EC

2004/108/EC

Applied harmonized standards

EN 55014–1: 2006 + A1: 2009

EN 55014–2: 1997 + A2: 2008

EN 60335–1

EN 60335–2–54

EN 61000–3–2: 2006 + A2: 2009

EN 61000–3–3: 2008

EN 62233: 2008

Applied national standards

TRD 801


Year of CE marking

1998

5.957-470

The undersigned act on behalf and under the power of attorney of the company management.


H. Jenner
CEO


S. Reiser
Head of Approbation

Authorised Documentation Representative
S. Reiser

Alfred Kärcher GmbH Co. KG
Alfred-Kärcher-Str. 28 - 40
71364 Winnenden (Germany)
Phone: +49 7195 14-0
Fax: +49 7195 14-2212
Winnenden, 2010/09/01

Technical specifications

Electrical connection		
Current type	--	1~
Frequency	Hz	50/60
Voltage	V	230-240
Type of protection		IPX4
Voltage in the handle	V	24
Mains cable	Order no.	EU 6.647-757.0
		CH 6.647-832.0
		GB 6.647-831.0
Performance data		
Heating output	W	2300
Pump	W	50
Max. operating pressure	MPa (bar)	0,32 (3,2)
Permitted operating pressure	MPa (bar)	0,57 (5,7)
Temperature	°C	145
Heating time per litre of water	min	ca. 4,5
Max. steam quantity	g/min	82
Dimensions and weights		
Weight without accessories	kg	8,0
Max. water capacity	l	4,0
Tank content	l	2,0
Boiler capacity	l	2,4
Length	mm	480
Width	mm	305
Height	mm	265