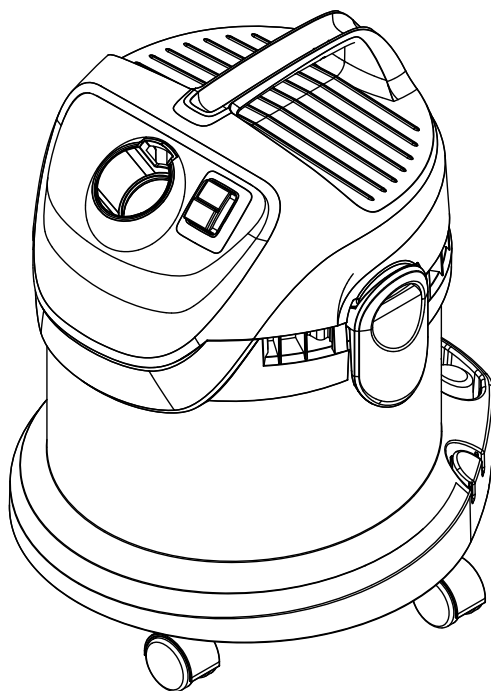


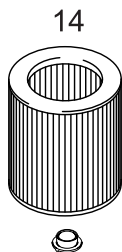
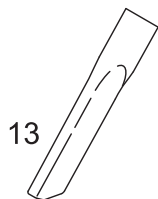
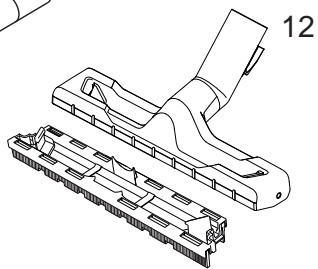
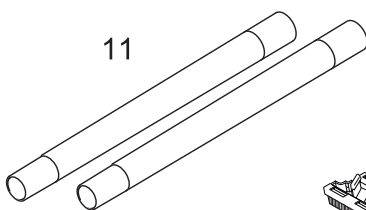
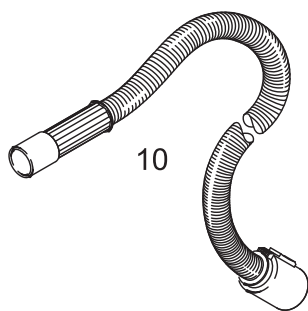
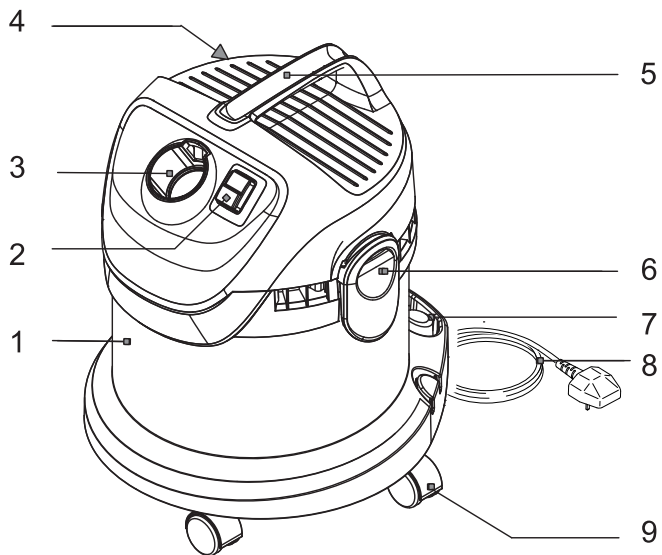
Operating Instructions

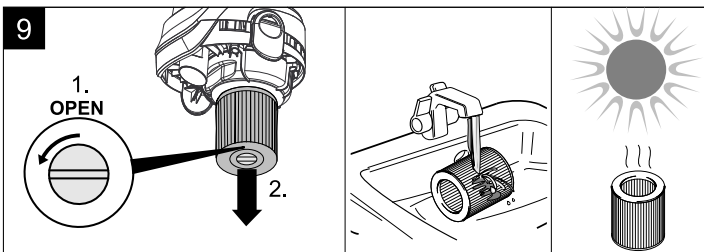
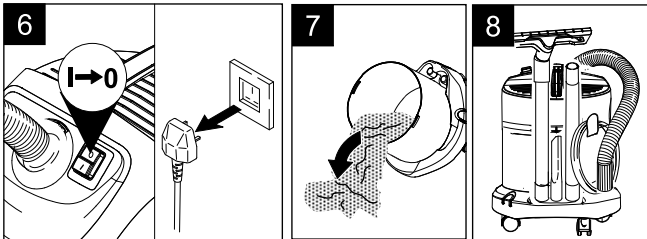
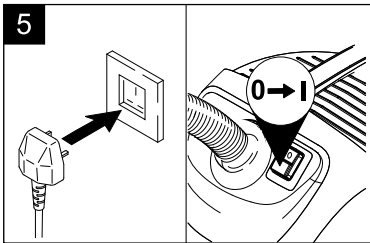
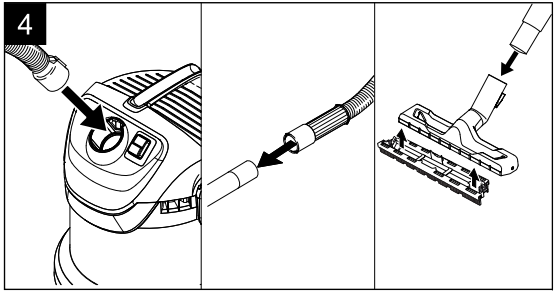
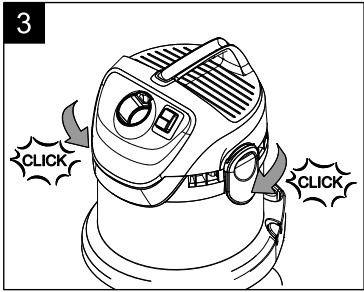
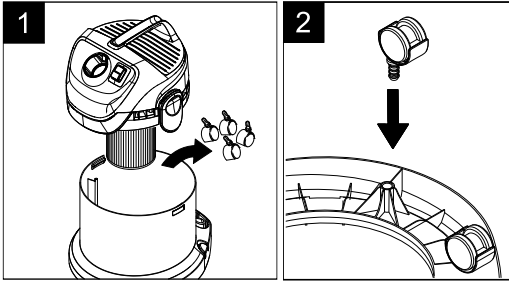
Before first use of the unit
read these operating instructions
and act in accordance with them.



Register and win!
www.kärcher.com/register-and-win







Contents

General notes	5
Safety instructions	6
Description of the Appliance	7
Commissioning and operation	8
Maintenance and care	9
Troubleshooting	9
Helpline	10
Technical specifications	10

General notes

Dear Customer,



Please read and comply with these original instructions prior to the initial operation of your appliance and store them for later use or subsequent owners.

Proper use

In accordance with the descriptions and the safety information in these operating instructions the appliance is intended for use as a multi-purpose vacuum cleaner.

This appliance has been designed for use in private households and is not intended for commercial use.

- Protect the unit from rain. Do not store outside.
- This device may not be used to suck in ash and soot.

Please use this appliance only with accessories and spare parts approved by KÄRCHER.

The manufacturer is not responsible for any damages that may occur on account of improper use or wrong operations.

Environmental protection



The packaging material can be recycled. Please do not place the packaging into the ordinary refuse for disposal, but arrange for the proper recycling.



Old appliances contain valuable materials that can be recycled.

■ Please arrange for the proper recycling of old appliances. Please dispose your old appliances using appropriate collection systems.

Disposing the filter

The filter is made from environment-friendly materials.

The filter can therefore be disposed off through the normal household garbage provided you have not sucked in substances that are not permitted to be thrown into household garbage.

Notes about the ingredients (REACH)

You will find current information about the ingredients at:

www.kaercher.com/REACH

Warranty

The terms of the guarantee applicable in each country have been published by our respective national distributors. We will repair possible faults on your unit free of charge within the warranty period, insofar as the faults are caused by material defects or defective workmanship. Guarantee claims should be addressed to your dealer or the nearest authorized customer service centre, and supported by documentary evidence of purchase.

(See address on the reverse)

Customer Service

Our KÄRCHER branch will be pleased to help you further in the case of questions or faults.

Ordering spare parts and special attachments

At the end of the operating instructions you will find a selected list of spare parts that are often required.

You can procure the spare parts and the attachments from your dealer or your KÄRCHER branch office.

Safety instructions

- *This appliance is not intended for use by persons with limited physical, sensory or mental capacities or lacking experience and/or skills, unless such persons are accompanied and supervised by a person in charge of their safety or they have received precise instructions on the use of this appliance and have understood the resulting risks.*
- *Children may only use this appliance if they are over the age of 8 and supervised by a person in charge of their safety, or if they have received instructions on the use of this appliance and have understood the resulting risks.*
- *Children must not play with this appliance.*
- *Supervise children to prevent them from playing with the appliance.*
- *Cleaning and user maintenance must not be performed*

by children without supervision.

- *Keep packaging film away from children - risk of suffocation!*
- *Switch the appliance off after every use and prior to every cleaning/maintenance procedure.*
- *Risk of fire. Do not vacuum up any burning or glowing objects.*
- *The appliance may not be used in areas where a risk of explosion is present.*

△ **Electrical connection**

The appliance may only be connected to alternating current. The voltage must correspond with the type plate on the appliance.

△ **Risk of electric shock**

Never touch the mains plug and the socket with wet hands. Do not pull the plug from the socket by pulling on the connecting cable.

Check the power cord with mains plug for damage before every use. If the power cord is damaged, please arrange immediately for the exchange by an authorized customer service or a skilled electrician.

To avoid accidents due to electrical faults we recommend the use of sockets with a line-side current-limiting circuit breaker (max. 30 mA nominal tripping current).

⚠ Warning

Certain materials may produce explosive vapours or mixtures when agitated by the suction air! Never vacuum up the following materials:

- *Explosive or combustible gases, liquids and dust particles (reactive dust particles)*
- *Reactive metal dust particles (such as aluminium, magnesium, zinc) in combination with highly alkaline or acidic detergents*
- *Undiluted, strong acids and alkalis*
- *Organic solvents (such as petrol, paint thinners, acetone, heating oil).*

In addition, these substances may cause the appliance materials to corrode.

Symbols in the operating instructions

⚠ Danger

Immediate danger that can cause severe injury or even death.

⚠ Warning

Possible hazardous situation that could lead to severe injury or even death.

Caution

Possible hazardous situation that could lead to mild injury to persons or damage to property.

Description of the Appliance

When unpacking the product, make sure that no accessories are missing and that none of the package contents have been damaged. If you detect any transport damages please contact your dealer.

Illustrations on fold-out page!



- 1 Container
- 2 ON/OFF switch
- 3 Suction hose connection
- 4 Storage compartment for mains cable
- 5 Carrying handle
- 6 Appliance head with clip closure
- 7 Storage for suction tubes and accessories
- 8 Mains cable with mains plug
- 9 Swivel casters
- 10 Suction hose
- 11 Suction tubes 2 x 0.5 m
- 12 Floor nozzle with insert for wet and dry vacuum cleaning
- 13 Crevice nozzle
- 14 Cartridge filter (already installed in the device)

Commissioning and operation

Caution

Always work with an inserted cartridge filter during wet as well as dry vacuum cleaning!

Attaching the Accessories

Illustration 1

→ Remove the appliance head and take accessories out of the container.

Illustration 2

→ Fit the swivel casters on the container bottom.

Illustration 3

→ Put the appliance head onto the container and lock it.

Illustration 4

→ Connect accessories.

Note: For vacuuming dry dirt or water off the floor - always work with the insert (brush strip and rubber lip) in the floor nozzle.

Illustration 5

→ Connect the mains plug and turn on the appliance.

Dry vacuum cleaning

Caution

Work with a dry cartridge filter only!

Check the filter for damage prior to installation and replace as necessary.

Vacuum cold ashes only when using a pre-filter.

Order no. basic design: 2.863-139.0,
premium design: 2.863-161.0.

Wet vacuum cleaning

△ **Caution:**

Do not use a filter bag!

Immediately switch the appliance off if foam forms or liquids escape!

Immediately switch the appliance off or pull the power plug if foam forms or liquids escape!

Note: If the container is full, a float closes the suction opening, and the appliance works at a higher speed. Switch off the appliance immediately, and empty the container.

Finish operation

Illustration 6

→ Turn off the appliance and disconnect the mains plug.

Empty the container

Illustration 7

→ Remove the appliance head and empty the reservoir.

Storing the appliance

Illustration 8

→ Stow away the mains cable and accessory at the machine. Store the appliance in a dry room.

Maintenance and care

⚠ Danger

Turn off the appliance and remove the mains plug prior to any care and maintenance work.

Repair works may only be performed by the authorised customer service.

⚠ Warning

Do not use abrasives, glass or universal cleaners! Never immerse the appliance in water.

- ➔ Clean the appliance and accessory parts made of plastic with a commercial plastic cleaner.
- ➔ If required, rinse the container and accessories with water properly and dry them before reuse.

Illustration

- ➔ Only clean the cartridge filter under running water; do not wipe or brush. Let it dry completely prior to installation.

Troubleshooting

Decreasing cleaning power

If the cleaning power of the appliance deteriorates please check the following:

- ➔ Accessories, suction hose or suction tubes are clogged, please remove the obstruction using a stick.
- ➔ Cartridge filter is dirty, knock off dirt from cartridge filter and clean under running water if necessary.
- ➔ Replace damaged cartridge filter.

Helpline

Karcher (UK) Limited operate a helpline allowing customers to discuss any problems experienced with our products.

The helpline operates during normal business hours, if you have difficulty getting through, please understand that there are peak periods during the day when our consultants are unable to take all calls coming in. In these circumstances we would ask that you try to contact us again later in the day.

The helpline number is 01295 752200, open from 8.30am to 5.00pm Monday to Friday.

It helps us if you have the model number and data plate details to hand before making your call.

Alternatively you may write or E-mail to the address below:

Karcher (UK) Limited
Karcher House
Beaumont Road
Banbury
Oxon, OX16 1TB

E-mail:

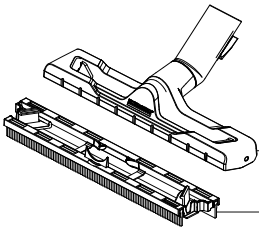
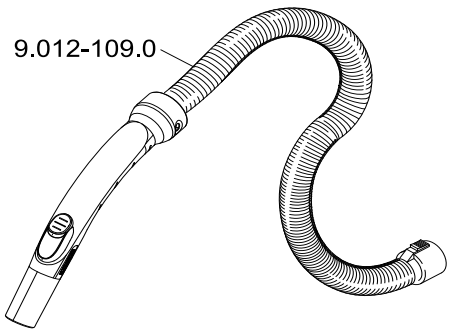
info@karcher.co.uk

Technical specifications

Mains voltage 1~50/60 Hz	220 - 240	V
Mains fuse (slow-blow)	13	A
Container capacity	12	l
Water intake with handle	5,5	l
Water intake with floor nozzle	3,0	l
Output P _{nom}	1000	W
Power cord	H 05VV-F2x0,75	
Weight (without accessories)	4,6	kg
Sound pressure level (EN 60704-2-1)	77	dB(A)

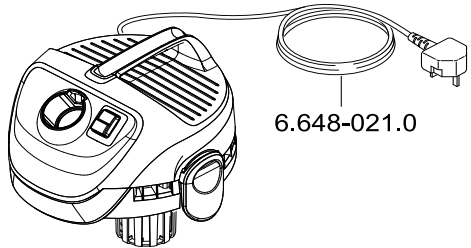
Subject to technical modifications!

9.012-109.0



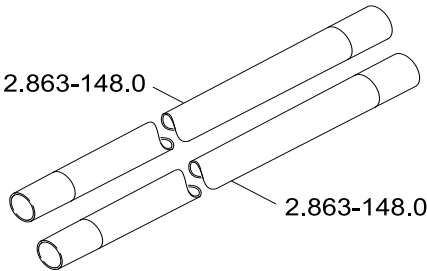
4.629-013.0

4.629-016.0

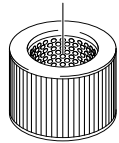


6.648-021.0

2.863-148.0



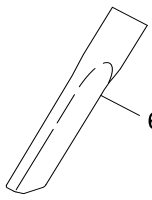
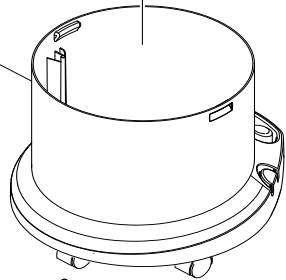
2.863-148.0



6.414-552.0

4.075-012.0

5.070-667.0



6.900-385.0

6.435-353.0

6.435-353.0