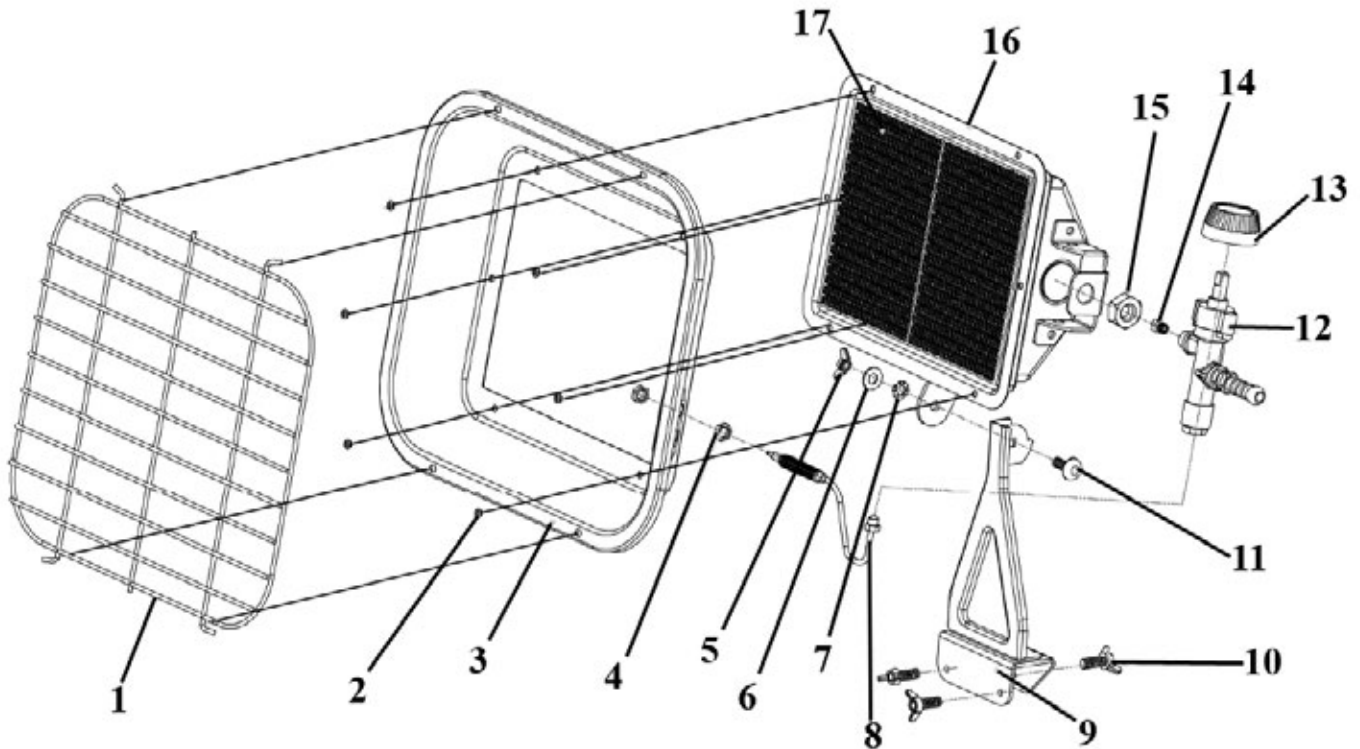


Parts Information:
Space Warmer® Propane Heater 10,250-15,354Btu/hr Bottle Mounting
Model No: LP13.V3



Item	Part No.	Description
1	LP14.V2-01	FRONT GUARD
2	LP14.V2-02	RIVET
3	LP14.V2-03	REFLECTOR
4	SN8.S	STEEL NUT M8 ZINC DIN934 (SINGLE)
5	SN6.SW	WING NUT M6 (SINGLE)
6	FWM6.S	FLAT WASHER M6 SINGLE
7	SM22C.12	M6 EXT TOOTH WASHER ZINC
8	LP13.V3-08	THERMOCOUPLE
9	LP13.V3-09	CYLINDER STAND
10	LP13.V3-10	BUTTERFLY SCREW M5

Item	Part No.	Description
11	CBN615.S	COACH BOLT M6x15mm (SINGLE)
12	LP14.V2-08	GAS VALVE
13	LP14.V2-09	GAS VALVE KNOB
14	LP14.V2-10	NOZZLE
15	LP14.V2-11	VALVE LOCKING HALF NUT
16	LP13.V3-16	BURNER GROUP
17	LP14.V2-13	CERAMIC PLATE (X2)
--	LP13.V3-18	GAS HOSE SCREW CONNECTION (0.7mm) (NOT SHOWN)
--	LP14.V2-15	GAS REGULATOR (37Mbar) (NOT SHOWN)

NOTE: It is our policy to continually improve products and as such we reserve the right to alter data, specifications and component parts without prior notice.

IMPORTANT: No liability is accepted for incorrect use of product.

WARRANTY: Guarantee is 12 months from purchase date, proof of which will be required for any claim.

Sealey Group, Kempson Way, Suffolk Business Park, Bury St Edmunds, Suffolk. IP32 7AR



01284 757500



01284 703534



sales@sealey.co.uk



www.sealey.co.uk