



The World's **Leading Technology...**
in the World's **Leading Torches**



K1L see page 10



MT7
see page 16/27



PTF-FS
see page 32



X7R see page 28

A Selection of **New Products** in this Brochure...

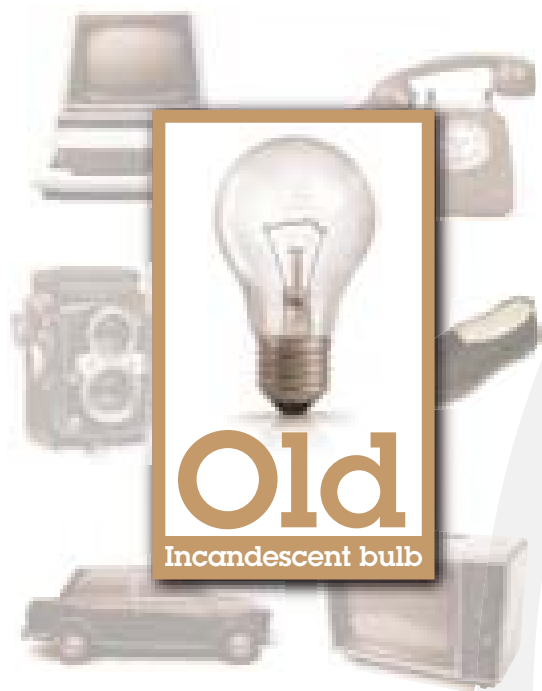
Contents

About LEDs	2	P6	23
Lumens	3	P7	23
Beam Distance	3	P14	23
Burn Time	3	P17	24
IPX Rating	3	Aviator Dual Colour	24
Advanced Focus System	4	V² Pro	24
Blue Moon Focus	5	Key Features Table	25
Speed Focus / Fast Lock	5	Tactical & Xtreme Series	26
Dynamic Switch	5	T5	27
Smart Light Technology	6/15	T7	27
Modular Construction	7	MT7	16/27
Floating Charge System	8	X7R Rechargeable	28
Key-Ring Series	9	X14	29
K1	10	X21	30-31
K1L	10	X21R Rechargeable	30-31
K2	10	Police Tech Focus	32
POS Displays	11	Key Features Table	33
V9	12	Active Series	34
V8	12	L5 Lightweight Torch	35
V² Key Finder	12	L6 Lightweight Torch	35
K3	12	L7 Lightweight Torch	35
Key Features Table	13	L7E Lightweight Torch	35
Multi-Function Series	14	B7 Bike Torch	36
M1	16	V9 Laser Pointer	36
M5	16	D14 Frogman Dive Torch	37
MT7	16/27	Automotive Rechargeable	38
M7	16	P7 Kit	38
M7R Rechargeable	17	PTF Kit	38
M8	18	Key Features Table	39
M14	18	Head Torch Series	40
Key Features Table	19	Head Fire Revolution	41
Professional Series	20	H3	41
P2BM	21	H4	42
P3BM	21	H5	41
P3AFS	21	H7	43
P3AFS-P	21	H7R Rechargeable	43
P4BM	22	H14	44
P5	22	H14R Rechargeable	44
P5R Rechargeable	22	Key Features Table	45
		Accessories	46-49

LEDs – The Next Generation in Lighting. Today

An LED (Light Emitting Diode) is a micro-chip based device that emits light when an electrical current is passed through it. Early LEDs emitted red light and were most commonly used on electric signs or as simple indicator lights on items such as kettles. Today bright, white, LED lighting is possible and LEDs are at the cutting-edge of a

lighting revolution. The many advantages that modern LED lighting offers over dated traditional incandescent lighting means that LEDs today are the preferred choice for those that desire longevity, performance and efficiency.



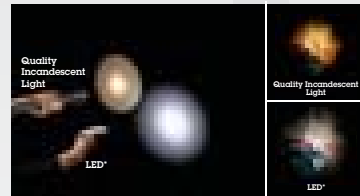
Supreme quality LEDs deliver supreme illumination

Today, LEDs can be found in torches across the price spectrum. What makes LED Lenser different? As with many things in life you generally get what you pay for and LED Lenser is no exception. Our LEDs are sourced from world renowned manufactures such as CREE™ and Nichia™ who manufacture them on silicone wafers in semi-conductor clean rooms. Due to the nature of the manufacturing process, LEDs made from the centre of the wafer are of superior quality and thus provide a brighter light. LED Lenser chooses to only use LEDs from the wafer centre and then expertly integrate them with state-of-the-art German engineering.



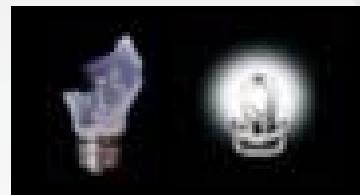
The Advantages of LEDs

Better Intensity and Brightness



LED Lenser uses the very best LEDs available to produce an intensity of light and level of brightness that is simply breathtaking. Thanks to the superior quality of LEDs used a homogenous pure white, not broken yellow, light is delivered - the hallmark of every LED Lenser torch.

Energy Efficient & Eco-friendly



A by-product of producing light is heat. Old fashioned incandescent lights are notoriously inefficient losing much of their generated energy as heat rather than light. Modern LEDs are infinitely more efficient as most of the energy is converted into usable light rather than wasteful heat. In addition LEDs intrinsically require less power to operate. Due to this increased overall efficiency significantly less replacement batteries and LEDs are required overtime thereby saving on vital resources in both the manufacture and disposal of these two items.

Reliability

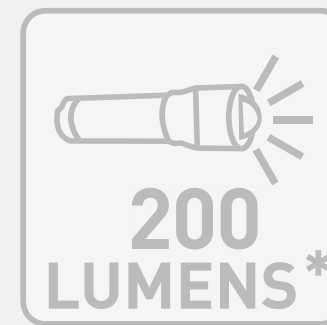


LEDs are much more shock and vibration resistant than traditional bulbs which are easily broken. As LEDs are a micro-chip there is no fragile filament to break making them ultra reliable in items such as torches which are robustly used in many challenging environments.

Better Value



Produced correctly, current white LEDs can provide up to 100,000 hours of light which is the equivalent of nearly 11 years of continuous operation. In stark contrast the average life of an incandescent bulb is only approximately 1,000 hours. Combine this phenomenal output with more efficient operation and LEDs stand head and shoulders above any other lighting option over time.

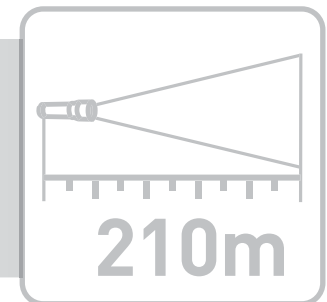


Lumens

Lumens (lm) is one of the most important terms in LED Lighting. It refers to the amount of light or light energy that is actually radiated from a light source. LED Lenser measures lumens in the brightest function that the torch will allow when switched on with a fresh set of the respective battery/batteries for that torch. The figures stated are average values and may vary $\pm 15\%$ depending on the LED chip and batteries.

Beam Distance

A function of the lumens generated and again an average value that may vary $\pm 15\%$ depending on the LED chip and batteries



Burn Time

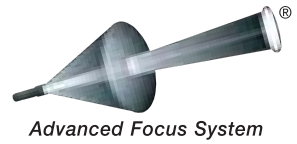
Average hours of light burn time as measured in the least energy consuming mode that the torch allows until residual lumens amounts to one lumen. One lumen is considered to be usable light - the equivalent of a full moon seen from an open field in a clear sky.

IPX Rating

A rating recognised by most European countries that measures ingress protection and water resistance. The first number shows protection against solid objects and the second number shows protection against liquids. Most LED Lenser torches have a rating of 54 which means that they have a limited protection against dust (sufficient to prevent malfunction) and limited ingress of water sprayed from any direction thus making them slash-proof.

IPX

Advanced Focus System

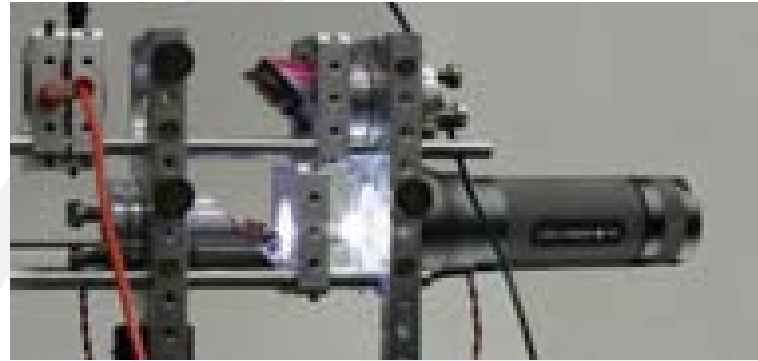


Traditionally light-focusing systems have consisted of either a lens or a reflector. Lenses have the advantage of emitting a wide homogenous

light for close-up visibility, yet over longer distances over 70% of the light is scattered and lost. Conversely, reflectors capture a higher percentage of the light over longer distances yet over a shorter distance scattered light causes dark light-free 'rings' and 'holes' which makes visibility difficult and can lead to eye-strain.

In both of these cases, stated lumen count (amount of light) is compromised as light is misdirected and wasted.

We tasked our technical experts to find a solution to this problem of wasted light and the result was our now patented Advanced Focus System (AFS) – an optics system that is considered one of the best in the world today and combines both precision lens and dynamic reflector. The 'Reflector-Lens' combines the strengths of the lens and the reflector into one to deliver a wide homogenous flood beam for close up visibility with no dark areas, together with a sharply-focused spot beam for long distance visibility.



Our Advanced Focus System™ goes from Broad Beam to Focused Beam with No Dark Spots or Rings

The Advanced Focus System™ flood beam provides a broad circular beam of light that illuminates larger, close-up areas and eliminates dark spots in the centre like traditional focusing flashlights.

Unlike a standard focusing flashlight, LED Lenser combines a unique lens and a reflector system to provide stageless transition from a broad flood beam to a focused spot beam.

The Advanced Focus System™ spot beam provides a sharply focused beam of light that illuminates more distant areas.

Blue Moon Focus System

The LEDs used in LED Lenser torches are world class when it comes to brightness. How do we get the super-bright white light that is a hallmark of LED Lenser Torches? The most effective LEDs to use to generate white light are blue LEDs coated with a special powder - doped yttrium aluminium garnet powder (Y3Al5O12). This results in a bright light with a bluish white output. Our master engineers then developed the Blue Moon Focus System, a lens technology that works like a micro-prism. This unique prismatic structure separates the blue spectrum from the white spectrum in the light emitted and 'pushes' the blue light to the outer edges of the light cone. The result is a brilliant white light within a beautiful blue edge.



Speed Focus / Fast Lock

Developed to compliment our superior Advanced Focus System optics, Speed Focus allows smooth, single handed focusing transition. Flood to spot beam and back again in an instant without the need for two-handed twist head focusing. Speed Focus is a feature of many torches in the LED Lenser range.

Fast Lock is a recent development that allows the focus to be fixed in position so that it does not slip accidentally. Fast Focus is a feature of the following torches: P5R, M7, M7R, MT7, M8, M14, X7R, X14.

SPOT

FLOOD

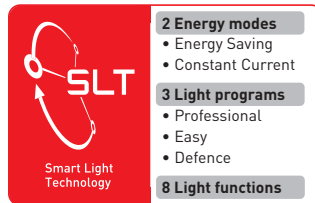


Dynamic Switch

The ability to choose a torch's light options, programs and modes with one hand, within milliseconds. The Dynamic Switch is named because this single switch is the gateway to a torch's Dynamic features. A simple light touch or full click (or multiples thereof) allow fuss-free and immediate selection of the feature required.



Smart Light Technology



Different situations and environments call for different lighting needs. That is why we developed Smart Light Technology. At the core of this technology is a pre-

programmed computer optimised micro-chip that enables any one of eight different light setting (Morse, Boost, Power, Low Power, Dim, Blink, SOS, Strobe) to be selected in any one of three pre-set light programs (Professional, Easy, Defence) to suit lighting needs. In addition this technology also allows two energy modes (Energy Saving, Constant Current) to be set for the torch which regulates the output of light. Slight Technology can be found in our Multi-function Series (page 14) and on selected other torches (P5R, X7R, X14, X21R, H14, H14R)

Low Battery Message System:

When the light dies down on the way home... Many torches now on the market – especially voltage control models - leave you in the dark from one second to the next as soon as battery power is exhausted. Smart Light Technology (SLT) constantly checks the battery charge condition and informs you in due time when changing batteries is necessary.

Energy Modes:

The Energy Modes are the selectable “basic settings” of your torch. You can choose between Energy Saving Mode, which optimizes burning life, and Constant Current Mode (constant current control) with electronically controlled, continuous light output.

Light Programs:

Light Programs are combinations of various light functions tailored to specific situations and applications. For example: The Easy Program is suitable for occasional, standard uses, while the Professional Program is your first choice for professional applications, whether they are job-related or for challenging outdoor activities. Thanks to the Defence Program, walking your dog in the park at night is a “safe bet”. Instead of causing confusion by excessive diversity, our Light Programs offer a sensible range of functions.

Light Functions:



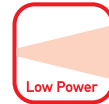
1. Boost / Morse

If the switch is pushed only once, the lamp for a short time shines brighter than it does when in continuous operation mode (Boost). It also enables you to send individual signals (morse).



2. Power

High light output for any situation.



3. Low Power

This function makes dazzle-free reading and working as easy as pie.



4. Dim

Stageless adjustment between 15 % and 100 % enables you to choose the desired light intensity.



5. Blink

Light pulses are emitted automatically in regular intervals. This function enables you to signal your position, for example.



6. S.O.S.

In case of an emergency, the lamp's SOS function can call help to your side. The signal is visible for several miles, which increases the chance of being rescued.



7. Defence Strobe (M7)

Personal safety was the basic idea behind this function. High-frequency light flashes (Strobes) are a quick and effective method of self-defence. In the field of non-lethal weapons, even the US army banks on this technology.

Engineering Excellence

There are torches you can only open with brut force. That's not user-friendly. Our new Modular System puts it right. If the torch should happen to fail during the hardest use you can very easily replace the defective components. Moreover, the modular configuration facilitates cleaning which may become necessary after extreme operational demands.



This image reflects the modular construction of various LED Lenser torches using the example of the LED Lenser M7. Not every torch will feature these technical specifications.

Floating Charge System

A torch has never been so easy to recharge. Charger and torch are connected by the invisible forces of magnetism. This fabulous contact charging system means that, unlike traditional rechargers, batteries do not need to be removed from the torch and placed in separate recharging units. Thus the possibility of dust or dirt contamination of the battery compartment is eliminated. In addition as the batteries stay within the torch whilst recharging, once recharged, the torch is available for immediate use when required without the need to refit the batteries.

Recharging is also better for the environment. With one single rechargeable battery up to 1000 single use batteries can be replaced. This not only saves money but also precious resources in both the manufacture and disposal of single use batteries.

So with the Floating Charge System you can conserve the environment and save money at the same time.



KEY-RING

KEY-RING SERIES

Small in size but not in performance. The ideal choice for elegant lighting that fits handily into pockets and handbags.



Key-Lights

A tough anodised black finish covers precisely engineered aircraft-grade aluminium, giving this fashionable new range of key-ring torches a very contemporary styling. This smart look is complemented on the K1L with a 'Light-Ring' feature that glows when the light is on. A simple twist action turns on these super lightweight torches that are ideal for keyrings, handbags and car gloveboxes. The perfect LED Lenser to keep on you at all times.



K1 8251
7713 K1 Key-Light
Replacement Batteries Pack

16m 0.5h* 17 LUMENS*

Type	Size	Weight	Power Supply
Key-ring	44x10mm	7.5gms	4 x AG3 Batteries

“So handy - I've lost count of the number of times I have been thankful that it was on my key-ring”



K1L 8251-L
7713 K1L Key-Light
Replacement Batteries Pack

15m 0.5h* 15 LUMENS*

Type	Size	Weight	Power Supply
Key-ring	48x10mm	10.3gms	4 x AG3 Batteries



K2 8252
7708 K2 Key-Light
Replacement Batteries Pack

20m 5h* 25 LUMENS*

Type	Size	Weight	Power Supply
Key-ring	60x14mm	20gms	4 x AG13 Batteries



V9 7613 V9 Micro Lenser Titanium in Test-It Gift Box
7713 Replacement Batteries Pack

16m 0.5h* 15 LUMENS*

Type	Size	Weight	Power Supply
Key-ring	53x9.5mm	11gms	4 x AG3 Batteries

The classic micro-torch from LED Lenser. Simple, elegant and so small you will hardly notice it's presence on your key-ring.

V8 7563 V8 Turbo Titanium in Test-It Gift Box
7708 Replacement Batteries Pack

22m 0.5h* 18 LUMENS*

Type	Size	Weight	Power Supply
Key-ring	72x14mm	22gms	3 x AG13 Batteries

Smooth Titanium finish on an aluminum body. Beautiful to hold, beautiful to use.



V2 7614TP V2 Key Finder Black in Test-It Pack
7831 V2 Key Finder Silver in Gift Box
7615TP V2 Key Finder Silver in Test-It Pack
7708 Replacement Batteries Pack

20m 0.5h* 18 LUMENS*

Type	Size	Weight	Power Supply
Key-ring	70x16mm	29gms	4 x AG13 Batteries

High-tech aircraft-grade aluminium casing and a centred end-cap switch. Small and powerful.

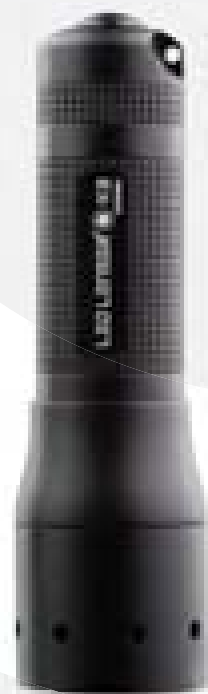


K3 8313 K3 Black in Gift Box
8313TP K3 Black in Test-It Pack
8313B K3 Titanium in Gift Box
8313GTP K3 Titanium in Test-It Pack
7708 Replacement Batteries Pack

33m 2h* 15 LUMENS*

Type	Size	Weight	Power Supply
Key-ring	68x20mm	34gms	4 x AG13 Batteries

Weighing only 34g and measuring less than 7cm, this torch may be small but its efficiency and beam are gigantic. The K3 features Blue Moon Focus - a blue circle surrounding the homogeneous light cone that is created when the blue in the light spectrum is forced to the edges in order to deliver a brighter whiter beam of light.



Key-Ring Series Key Features



	More info (page)	K1	K1L	K2	V9	V8	V ² Key Finder	K3
Size (mm)		44x10	48x10	60x14	53x9.5	72x14	70x16	68x20
Weight (g)		7.5	10.3	20	11	22	29	34
Lumens	3	17	15	25	15	18	18	15
Beam Distance (M)	3	16	15	20	16	22	20	33
Burn Time (hrs)	3	0.5	0.5	5	0.5	0.5	0.5	2
IPX Rating	3	54	54	54	54	54	54	54
Fixed Focus		●	●	●	●	●	●	
Blue Moon Focus	5							●
Twist to Turn On		●	●	●				
End Cap Switch							●	●
Barrel Switch					●	●		
Aluminium casing	7	●	●	●	●	●	●	●
Key-Ring		●	●	●	●	●	●	●
Batteries Included		●	●	●	●	●	●	●

Smart Light Technology

SLT
Smart Light Technology

- 2 Energy modes**
 - Energy Saving
 - Constant Current
- 3 Light programs**
 - Professional
 - Easy
 - Defence
- 8 Light functions**

MT7, M7, M7R, M8, M14

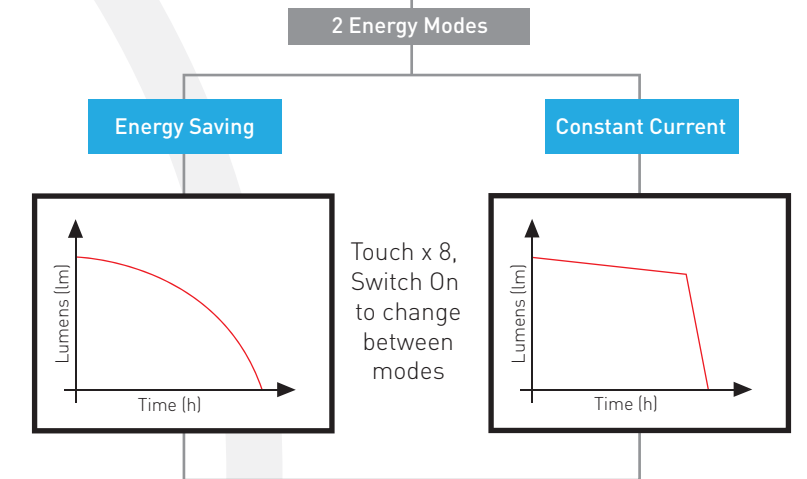
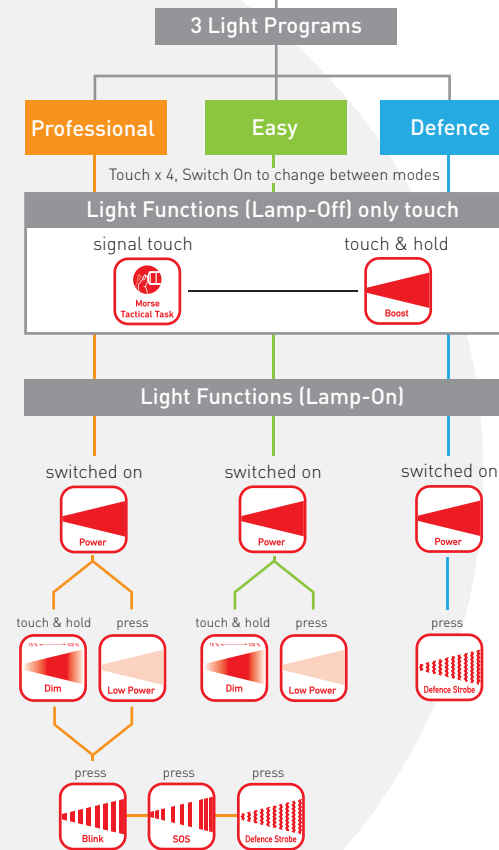
SLT
Smart Light Technology

- 3 Light Functions**
 - Power
 - Defence Strobe
 - Lower Power
- Smart LED Protection**

M1, M5

Light Functions (Lamp-Off)

- Switch On**
- Touch x1, Switch On** (within 1 second)
- Touch x2, Switch On** (within 1 second)



The Energy Modes are the selectable "basic settings" of your torch. You can choose between Energy Saving Mode, which optimises burn time, and Constant Current Mode (constant current control) with electronically controlled, continuous light output.

Low Battery Message System
When the light dies down on the way home ... Many torches now on the market - especially voltage control models - leave you in the dark from one second to the next as soon as battery power is exhausted. Smart Light Technology (SLT) constantly checks the battery charge condition and informs you in due time when changing batteries is necessary. (does not apply to M1 and M5)

MULTI-FUNCTION SERIES

Diverse settings call for individual light programs. Our engineers developed Smart Light Technology featuring multiple light programs that run up to eight different functions all operable from a single switch. Additionally, energy optimisation through Energy Saving or Constant Current modes can also be selected and set via the same Dynamic Switch.



Morse/Tactical Task
This function enables you to send individual signal sequences.



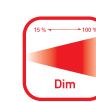
Boost
If the switch is pressed only once, the lamp shines brighter for a brief moment, than it does when in continuous operation mode.



Power
High light output for any situation.



Low Power
Light output is dimmed down to approx. 15 %, which also makes for a considerably extended burn time.



Dim
Stageless adjustment between 15 % and 100 % enables you to choose the desired light intensity.



Blink
Light pulses are emitted automatically in regular intervals. This function enables you to signal your position, for example.



S.O.S.
In case of an emergency, the torch's SOS function can call help to your side. The signal is visible for several kilometers, which increases the chance of being rescued.



Defence Strobe
Personal safety was the basic idea behind this function. High-frequency light flashes (Strobes) are a quick and effective method of self-defence. In the field of non-lethal weapons, even the US army relies on this technology.



M1

8301 8501TP 7759	M1 Black in Gift Box M1 Black in Test-It Pack Replacement CR123 Battery			
------------------------	---	--	--	--

Type	Size	Weight	Power Supply
Handheld	97x23.5mm	76gms	1 x CR123 Lithium Battery

A pocket powerhouse powered by a frost resistant Lithium battery. Incredibly versatile due to its small size, the M1 delivers a serious lighting performance normally associated with much larger torches. Smart Light Technology is incorporated to deliver Power, Low Power and Defence Strobe lighting options.



M1, M5



M5

8305 8505TP	M5 Black in Gift Box M5 Black in Test-It Pack			
----------------	--	--	--	--

Type	Size	Weight	Power Supply
Handheld	110x21.5mm	72gms	1 x AA Alkaline Battery

Similar in size to the M1 but operated by a single, more widely available AA battery that outputs over 100 lumens. Also offers Power, Low Power and Defence Strobe options via the integrated Smart Light Technology.

MT7

8307T	MT7 Black in Gift Box			
-------	-----------------------	--	--	--

Type	Size	Weight	Power Supply
Handheld	134x37mm	193gms	4 x AAA Alkaline Batteries

All the benefits of the M7 but in a tactical styling especially designed for Law Enforcement and Emergency Services units. Can be used to defend yourself, to break glass or call for help with the SOS function. Strong and reliable.



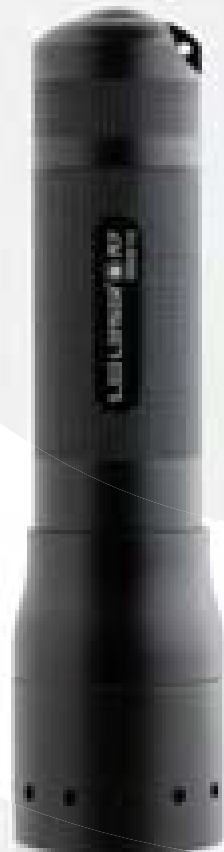
“great size, great functionality”

M7

8307 8507TP	M7 Black in Gift Box M7 Black in Test-It Pack			
----------------	--	--	--	--

Type	Size	Weight	Power Supply
Handheld	137x37mm	196gms	4 x AAA Alkaline Batteries

Multi-award winning light sensation that offers the full suite of Smart Light Technology customisation options. Two Energy Modes, three Light Programs and any one of eight Light Functions means that output can be regulated and the right light chosen for the job in hand. An impressive torch that delivers on all fronts.



M7R

8407R 7704	M7R Black in Durable Case Replacement L-ion Battery			
---------------	--	--	--	--

Type	Size	Weight	Power Supply
Handheld	156x37mm	203gms	1 x L-ion 3.7v Battery

The M7R proves that high performance and consideration for the environment are not natural enemies. Recharging, rather than the use of disposable batteries, makes this torch a little environmentally friendlier. The Floating Charge System is one of the very best contact chargers in the world today enabling the battery to be charged without the need to remove it from its housing. The intelligent illumination control via Smart Light Technology offers the user a multitude of options to ‘tailor’ light for any situation or environment. Supplied in a hard carry/storage case with rechargeable battery, mains/usb powered floating charge system, 360° hands-free belt clip, wall mount and wrist-strap.



Smart Light Technology

- 2 Energy modes**
 - Energy Saving
 - Constant Current
- 3 Light programs**
 - Professional
 - Easy
 - Defence
- 8 Light functions**
 - Dim
 - Morse Tactical Task
 - SOS
 - Power
 - Low Power
 - Blink
 - Boost
 - Defence Strobe

MT7, M7, M7R, M8, M14



charged and ready to go without fuss”



Multi-function Series Key Features

M8

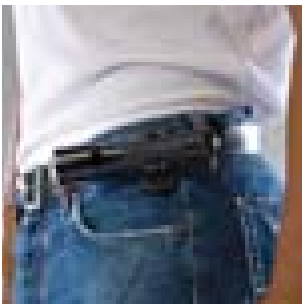
8308
7759

M8 Black in Gift Box
Replacement CR123 Battery



Type	Size	Weight	Power Supply
Handheld	158x37mm	159gms	2 x CR123 Lithium Batteries

Equipped with two temperature resistant lithium batteries, the M8 is the trusted companion on the highest peaks, trekking across deserts or when hiking through snow and ice. The elegant, contemporary design, coupled with smart styling, of this torch pleases both the eye and the hand. The precision micro-chip controlled Smart Light Technology enables the optional use of Constant Power Regulation or the energy optimised Energy Saving Mode. Up to eight light options set across three programs delivers a versatility to this torch that is appreciated by both professionals and enthusiasts alike. An added bonus is the 360° rotating belt clip (included) which gives a hands-free usage option.



“Multi-award winning design”

M14

8314

M14 Black in Gift Box



Type	Size	Weight	Power Supply
Handheld	163x47mm	355gms	4 x AA Alkaline Batteries

The flagship of the Multi-function Series, the M14 delivers an outstanding level of brightness and beam range. All the core functions of Smart Light Technology are easily and instantly selected via the single Dynamic Switch. The larger head size delivers an increased lighting range over the M7/M8 and the four AA batteries deliver one of the best burn times of any torch in the LED Lenser range. A discerning choice packed full of technology, for the discerning user.



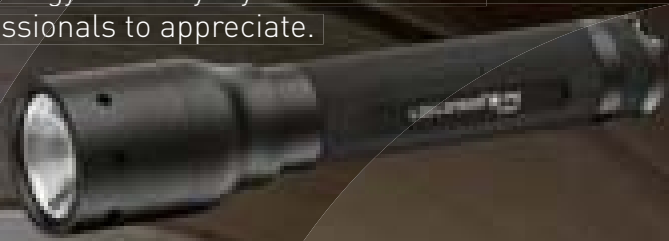
“premium performance from a premium torch”



	More Info (page)	M1	M5	M7	MT7	M7R	M8	M14
Size (mm)		97x23.5	110x21.5	137x37	134x37	156x37	158x37	163x47
Weight (g)		76	72	196	193	203	159	355
Lumens	3	170	108	220	220	220	235	225
Beam Distance (M)	3	150	110	255	255	255	230	280
Burn Time (hrs)	3	5.5	4.5	11	11	20.5	17	11
IPX Rating	3	54	54	54	54	54	54	54
Rechargeable						●		
Floating/Contact Charge System	8					●		
Patented Advanced Focus System	4	●	●	●	●	●	●	●
Smart Light Technology - Select	15	●	●					
Smart Light Technology - Full	15			●	●	●	●	●
Easy-slide Speed Focus	5	●	●	●	●	●	●	●
End Cap Switch		Dynamic	Dynamic	Dynamic	Dynamic	Dynamic	Dynamic	Dynamic
Dynamic Switch - Boost	5			●	●	●	●	
Dynamic Switch - Power	5	●	●	●	●	●	●	●
Dynamic Switch - Low Power	5	●	●	●	●	●	●	●
“Battery Low” Indication	15			●	●	●	●	●
Aluminium Casing	7	●	●	●	●	●	●	●
Gold Plated Contacts		●	●	●	●	●	●	●
Wrist Strap		●	●	●	●	●	●	●
Belt Pouch		●	●					
Hands-Free 360° Belt Clip				●	●	●	●	●
Batteries Included		●	●	●	●	●	●	●

PROFESSIONAL SERIES

Simply stylish and engineered to last, this stunning range of torches is packed full of amazing technology for everyday use. Torches for Professionals to appreciate.



P2 Σ M 8402 P2BM Black in Gift Box
8402TP P2BM Black in Test-It Pack

Type	Size	Weight	Power Supply
Handheld	102x15.5mm	36gms	1 x AAA Alkaline Battery

Small, slim, handy torch that defies its size and punches well above its weight.

“perfect for your pocket or key ring”

P3 Σ M 8403 P3 Black in Gift Box
8403TP P3 Black in Test-It Pack
8403G P3 Titanium in Gift Box
8403GTP P3 Titanium in Test-It Pack

Type	Size	Weight	Power Supply
Handheld	96x20mm	35gms	1 x AAA Alkaline Battery

Larger head size than the P2 provides an increased lighting range.



P3 AFS 8403A P3 AFS Black in Gift Box
8403ATP P3 AFS Black in Test-It Pack

Type	Size	Weight	Power Supply
Handheld	90x20mm	34gms	1 x AAA Alkaline Battery

Patented Advanced Focus System optics for spot/flood beam light options.

“the P3 but with patented Advanced Focus System optics”

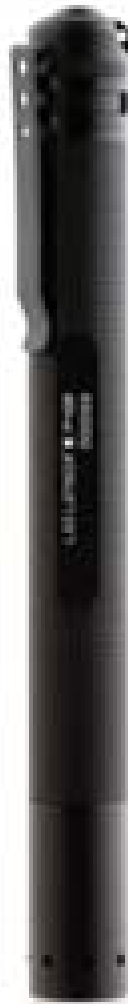


P3 AFS P 8403AP P3 AFSP Black in Gift Box

Type	Size	Weight	Power Supply
Handheld	89x20mm	35gms	1 x AAA Alkaline Battery

Ultimate power in a small handy size. Breathtaking 75 lumens of light.





P4

8404	P4 Black in Gift Box	25m	8.5h*	18 LUMENS*
8404TP	P4 Black in Test-It Pack			

Type	Size	Weight	Power Supply
Handheld	146x14.5mm	53gms	2 x AAA Alkaline Batteries

Slim pen-like shape ideal for engineers and technicians.
The perfect inspection torch.



“as convenient
as having a
pen in your
pocket”



P5

8405	P5 Black in Gift Box	130m	3h*	105 LUMENS*
8405TP	P5 Black in Test-It Pack			

Type	Size	Weight	Power Supply
Handheld	115x26mm	77gms	1 x AA Alkaline Battery

A giant of brightness. Superior optics produce a level of light that is simply stunning from such a small torch.



P5R

8405R	P5R Black in Durable Case	190m	7h*	210 LUMENS*
7703	Replacement L-ion Battery			

Type	Size	Weight	Power Supply
Handheld	133x26mm	77gms	1 x AA L-ion 3.7v

Rechargeable with additional Smart Light Technology.
Includes rechargeable battery, mains/usb powered Floating Charge System, 360° hands-free belt clip, wall mount, wrist-strap and a hard case for storage.

“Its great never
having to take the
batteries out to
recharge them”

P6

8406	P6 Black in Gift Box	145m	8h*	130 LUMENS*
8406TP	P6 Black in Test-It Pack			
8406GTP	P6 Titanium in Test-It Pack			

Type	Size	Weight	Power Supply
Handheld	168x26mm	120gms	2 x AA Alkaline Batteries

A captivating ultra-white, super bright beam and world class optics.

P7

8407	P7 Black in Gift Box	210m	64h*	200 LUMENS*
8407TP	P7 Black in Test-It Pack			
8407G	P7 Titanium in Gift Box			
8407GTP	P7 Titanium in Test-It Pack			

Type	Size	Weight	Power Supply
Handheld	133x37mm	192gms	4 x AAA Alkaline Batteries

The combination of technology, performance and size makes the P7 an outstanding all-rounder. The Dynamic Switch enables simple light output selection and thus the 'tailoring' of light to suit situations and environments.

Also available with a pressure-pad switch and a gun mount bracket. See page 38.



“one of the
brightest torches
I have ever used”



Advanced Focus System
See Page 4

P14

8414	P14 Black in Gift Box	280m	84h*	210 LUMENS*
8414TP	P14 Black in Test-It Pack			
8414G	P14 Titanium in Gift Box			
8414GTP	P14 Titanium in Test-It Pack			

Type	Size	Weight	Power Supply
Handheld	205x47mm	371gms	4 x AA Alkaline Batteries

A simply world class torch delivering a wide lighting range from its larger head size and superior technology.

“superb build
quality, very
robust torch”



P17

8417 P17 Black in Gift Box



Type	Size	Weight	Power Supply
Handheld	315x53mm	850gms	3 x D Alkaline Batteries

See and be seen with this exceptional lighting instrument that has a light throw of over 300 meters.



“feels good to use - just the right size and power”

Aviator

7736RD Aviator Silver in Box



Type	Size	Weight	Power Supply
Handheld	95x25mm	98gms	3 x AAA Alkaline Batteries

Five high-intensity white LEDs for an ultra-bright beam plus the added bonus of a high-intensity red light LED to aid night vision.



V² PROFESSIONAL

7736 V² Professional Black in Gift Box
7636TP V² Professional Black in Test-It Pack



Type	Size	Weight	Power Supply
Handheld	115x25mm	120gms	3 x AAA Alkaline Batteries

Popular fixed focus torch that out shines many larger torches.

Professional Series Key Features



	More info (page)	P2 ^{BM}	P3 ^{BM}	P3 ^{AFS}	P3 ^{AFS-P}	P4 ^{BM}	P5	P5 ^R	P6	P7	P14	P17	Aviator	V ² PROFESSIONAL
Size (mm)		102x15.5	96x20	90x20	89x20	146x14.5	115x26	133x26	168x26	133x37	205x47	315x53	95x25	115x25
Weight (g)		36	35	34	35	53	77	77	120	192	371	850	98	120
Lumens	3	16	16	25	75	18	105	210	130	200	210	220	120	110
Beam Distance (M)	3	25	31	60	120	25	130	190	145	210	280	330	42	37
Burn Time (hrs)	3	7	7	6	1.1	8.5	3	7	8	64	84	480	44	37
IPX Rating	3	54	54	54	54	54	54	54	54	54	54	54	54	54
Rechargeable								●						
Floating Charge System	8							●						
Blue Moon Focus	5	●	●			●								
Patented Advanced Focus System	4			●	●		●	●	●	●	●	●		●
Smart Light Technology	15							●						
Easy-Slide Speed Focus	5	●	●	●	●	●	●	●	●	●	●	●		●
End Cap Switch		Standard	Standard	Standard	Standard	Standard	Standard	Dynamic	Standard	Dynamic	Dynamic			Standard
Barrel Switch												Dynamic	Standard	
Dynamic Switch - Boost	5									●	●	●		●
Dynamic Switch - Power	5							●		●	●	●		●
Dynamic Switch - Low Power	5							●		●	●	●		●
Aluminium Casing	7	●	●	●	●	●	●	●	●	●	●	●	●	●
Gold Plated Contacts		●	●	●	●	●	●	●	●	●	●	●	●	●
Key-ring		●	●	●	●									●
Pocket Clip		●	●	●	●	●								●
Wrist Strap			●	●	●	●	●	●	●	●	●		●	●
Belt Pouch		●	●	●	●	●	●		●	●	●		●	●
Batteries Included		●	●	●	●	●	●	●	●	●	●	●	●	●

TACTICAL & XTREME SERIES

The ultimate choice for police forces, military and emergency services teams internationally, this series of torches are specifically designed to deliver supreme illumination and reliability in the most hazardous of situations. Performance to rely on.



T5

7415 T5 Black in Gift Box
7415TP T5 Black in Test-It Pack



Type	Size	Weight	Power Supply
Handheld	117x26mm	88gms	1 x AA Alkaline Battery

Adjusted shape and grip to meet the requirements of tactical units. A pocket friendly lighting powerhouse.

“small torch - powerful performance”



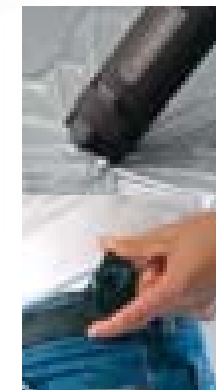
T7

7439 T7 Black in Gift Box
7439TP T7 Black in Test-It Pack
7439G T7 Titanium in Gift Box



Type	Size	Weight	Power Supply
Handheld	136x37mm	198gms	4 x AAA Alkaline Batteries

The bigger, even more powerful brother of the T5. Features a Dynamic Switch for instant light level selection (three options).



MT7

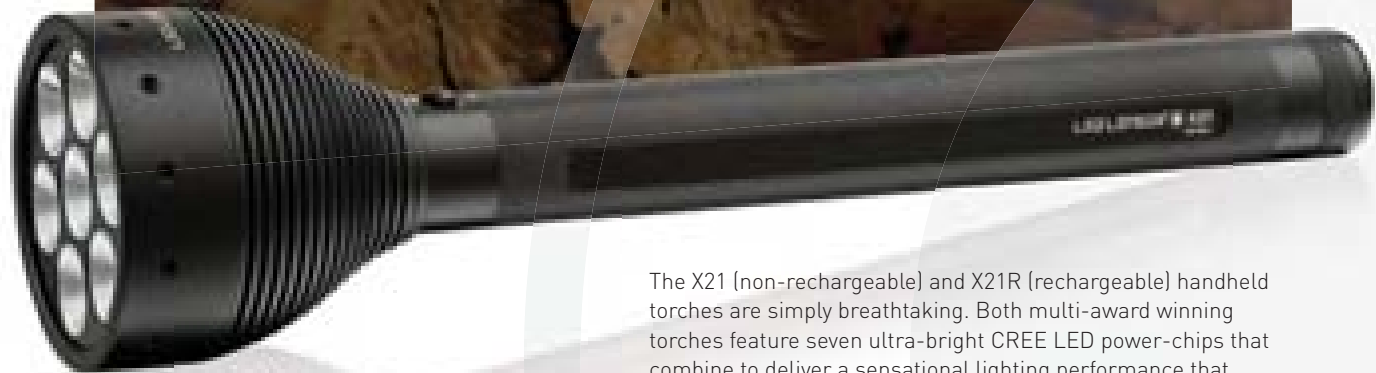
8307T MT7 Black in Gift Box



Type	Size	Weight	Power Supply
Handheld	134x37mm	193gms	4 x AAA Alkaline Batteries

A virtually indestructible tactical lighting torch that can also be used to defend / drive back attackers with the military-developed strobe function, break glass, or alert emergency services with the SOS function. Incorporates the full range of Smart Light Technology functions (page 15).





“The light delivered was unbelievable – The best torch ever!”

The X21 (non-rechargeable) and X21R (rechargeable) handheld torches are simply breathtaking. Both multi-award winning torches feature seven ultra-bright CREE LED power-chips that combine to deliver a sensational lighting performance that makes even some car headlights look dim in comparison.

Both torches feature our patented spot/flood beam Advanced Focus System optics with easy-glide Speed Focus, single multi-function Dynamic Switch located on the barrel and tough aircraft-grade aluminium casing. In addition, the X21R also features our Smart Light Technology (see page 15) offering total light customisation and a handy battery status indicator.

A protective hard carry/storage case is supplied with each torch as is a useful shoulder strap. The X21R includes an additional anti-roll accessory in the case.

Innovation and technology combine to deliver world class lighting.



Optional Tripod
order code: 5713



Hard Carry Case



Shoulder Strap

X21 8421 X21 Black in Durable Hard Case

Type	Size	Weight	Power Supply
Handheld	397x95.5mm	1360gms	4 x D Alkaline Batteries

X21R 8421R X21R Black in Durable Hard Case

Type	Size	Weight	Power Supply
Handheld	412x95.5mm	1440gms	4 x D Ni-Mh Battery Pack



X21R Smart Light Technology

2 Energy modes

- Energy Saving
- Constant Current

3 Light programs

- Professional
- Easy
- Defence

8 Light functions

Dim

Morse Tactical Task

SOS

Power

Low Power

Blink

Boost

Defence Strobe

Note
X21 - rechargeable batteries cannot be used with this torch
X21R - standard (non-rechargeable) Alkaline batteries cannot be used with this torch



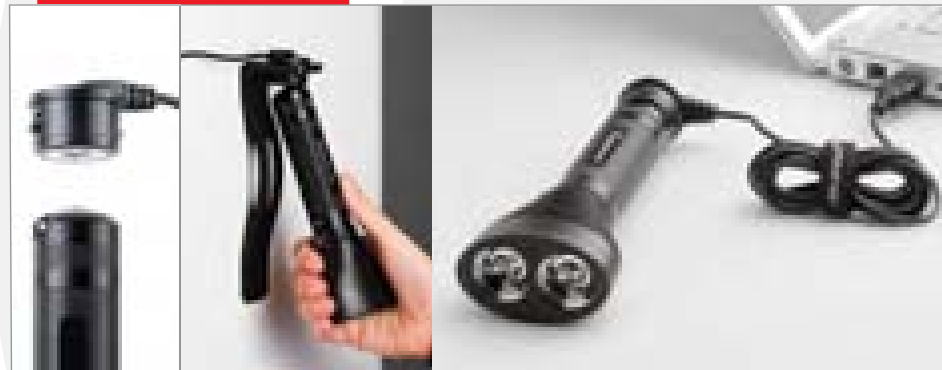
X7R 8408R 7704 X7R Black in Durable Hard Case Replacement L-ion Battery 320m 7.5h 500 LUMENS*

Type	Size	Weight	Power Supply
Handheld	171x70mm	240gms	1 x L-ion 3.7v Battery

Spectacular synchronised dual-lens rechargeable torch with one of the best charging systems in the world today – the Floating Charge System which enables charging without fiddly battery removal. The two lenses operate effortlessly and in flood beam position can form a circle of light up to 45m in diameter. The 500 lumens can also be concentrated to throw the light up to 320 meters giving the X7R one of the most powerful spot beams in the LED Lenser range.

“WOW! - I love this torch”

Floating Charge System



“the usb charging option is really handy”



X14 8415X X14 Black in Gift Box 350m 10h 450 LUMENS*

Type	Size	Weight	Power Supply
Handheld	181x83mm	420gms	4 x AA Alkaline Batteries

Two synchronised light sources (X-LENS Technology) converge to form a focusable single circular light cone that can impressively deliver up to 450 lumens of light. This powerful performance, together with the handy size and advanced styling of this technology packed torch makes it the ideal choice for any challenging environment.

“powerful lighting elegantly delivered”



X7R/X14

(more information on page xx)



**POLICE
TECH FOCUS**

7438	PTF Black in Gift Box
7438TP	PTF Black in Test-It Pack
7438G	PTF Titanium in Gift Box
7438GP	PTF Titanium in Test-It Pack
7438B	PTF Cobalt Blue in Gift Box



Type	Size	Weight	Power Supply
Handheld	126x32mm	144gms	3 x AAA Alkaline Batteries

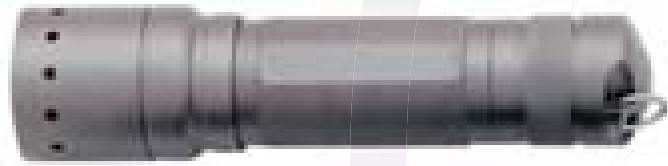
The original twist-focusing classic from LED Lenser. Simply twist the head for spot or flood beam selection. The patented Advanced Focus System optics, splash-proof housing and aircraft-grade aluminium casing delivers a high level of robustness for everyday use. The Police Tech Focus is the preferred choice of many police forces internationally including the British and German police forces.



“my PTF is essential kit on my utility belt”



Titanium



Cobalt Blue



**POLICE
TECH FOCUS
BARREL SWITCH**

7438FS	Police Tech Focus - Barrel Switch Black in Gift Box
--------	---



Type	Size	Weight	Power Supply
Handheld	126x32mm	144gms	3 x AAA Alkaline Batteries

Exactly the same as the standard Police Tech Focus except that the switch is positioned on the barrel rather than the tail-cap.



Tactical & Xtreme Series Key Features

- 420mm
- 400mm
- 380mm
- 360mm
- 340mm
- 320mm
- 300mm
- 280mm
- 260mm
- 240mm
- 220mm
- 200mm
- 180mm
- 160mm
- 140mm
- 120mm
- 100mm
- 80mm
- 60mm
- 40mm
- 20mm



	More Info (page)	T5	T7	Police Tech Focus	MT7	X7R	X14	X21	X21R
Size (mm)		117x26	136x37	126x32	134x37	171x70	181x83	397x95.5	412x95.5
Weight (g)		88	198	144	193	240	420	1360	1440
Lumens	3	105	200	115	220	500	450	1000	1600
Beam Distance (M)	3	130	210	220	255	320	350	500	600
Burn Time (hrs)	3	3	55	52	11	7.5	10	244	7
IPX Rating	3	54	54	54	54	54	54	54	54
Rechargeable						●			●
Floating/Contact Charge System	8					●			●
Patented Advanced Focus System	4	●	●	●	●	●	●	●	●
Smart Light Technology - Full	15				●	●	●		●
Easy-Slide Speed Focus	5	●	●		●	●	●	●	●
Twist Focus				●					
End Cap Switch		Standard	Dynamic	Standard	Dynamic	Dynamic	Dynamic		
Barrel Switch								Dynamic	Dynamic
Dynamic Switch - Boost	5		●		●	●	●		●
Dynamic Switch - Power	5		●		●	●	●	●	●
Dynamic Switch - Low Power	5		●		●	●	●	●	●
Aluminium Casing	7	●	●	●	●	●	●	●	●
Gold Plated Contacts		●	●	●	●	●	●	●	●
Wrist Strap		●	●	●	●	●	●		
Hands-Free 360° Belt Clip					●	●	●		
Belt Pouch		●	●	●					
Batteries Included		●	●	●	●	●	●	●	●

ACTIVE SERIES

Our Active-Series of torches are the ideal companion for many popular activities including diving, biking and adventure travel. Each of these torches incorporates additional features and benefits that make them the perfect choice for hobbies, adventures and outdoor pastimes.



L-Series

The housing of the L-Series torches are constructed from Polycarbonate - a material that has some serious advantages. Firstly, it is only around half the weight of aluminium yet still very strong as witnessed by its use in aircraft cockpit windows. Additionally, as well as being shatter and shock proof, polycarbonate is temperature resistant from -175 degrees to +175 degrees. This makes it the ideal material to use in extreme temperature environments such as high on cold mountains and in hot deserts. The perfect torches for any adventure.

L5 7005 L5 Lightweight Torch Black in Test-It Box

150m 3h* 85 LUMENS*

Type	Size	Weight	Power Supply
Handheld	130x33mm	114gms	1 x AA Alkaline Battery

The smallest and lightest of the polycarbonate barrel range fits snugly into pockets and backpacks.



L6 7009 L6 Lightweight Torch Black in Test-It Box

200m 8h* 105 LUMENS*

Type	Size	Weight	Power Supply
Handheld	160x34mm	144gms	2 x AA Alkaline Batteries

The bigger brother of the L5 delivers a brighter light and longer run time from its two standard AA batteries.



L7 7008 L7 Lightweight Torch Black in Test-It Box

225m 42h* 115 LUMENS*

Type	Size	Weight	Power Supply
Handheld	133x37mm	135gms	3 x AAA Alkaline Batteries

Impressive brightness and an astonishing beam length. The perfect companion on heavy duty expeditions and adventures.



L7E 7008-E L7E Lightweight Torch Black in Test-It Box

93m 47h* 28 LUMENS*

Type	Size	Weight	Power Supply
Handheld	136x39mm	115gms	3 x AAA Alkaline Batteries

Light in weight, temperature resistant casing and a low anti-glare output. The everyday choice.



B7

8427LTP B7 Bike Torch Black in Test-It Pack
8427TP B7 Bike Torch Titanium in Test-It Pack



Type	Size	Weight	Power Supply
Bike/Hand	133x37mm	192gms	4 x AAA Alkaline Batteries

A beam as bright as many motorbike headlamps. The splash-proof housing protects the torch from heavy rain and withstands vibrations and shocks. The Bike Mount (included) is designed for 2-in-1 flexibility as it allows the torch to be removed instantly and without fuss so that it can also be used as a powerful handheld torch.



“the practical bracket lets you mount and dismount the torch instantly”

V9

Laser Pointer

7630 V9 Laser Pointer in Test-It Gift Box
7714 Replacement Battery Pack



Type	Size	Weight	Power Supply
Key-Ring	58x10.5mm	14gms	3 x AG5 Alkaline Batteries

High quality laser pointer. Up to 150m range. Red light.



“perfect for your pocket or key ring”

D14

7456 Frogman Power Chip Neon in Gift Box
7456TP Frogman Power Chip Neon in Test-It
7457 Frogman Power Chip Black in Gift Box
7457TP Frogman Power Chip Black in Test-It Pack



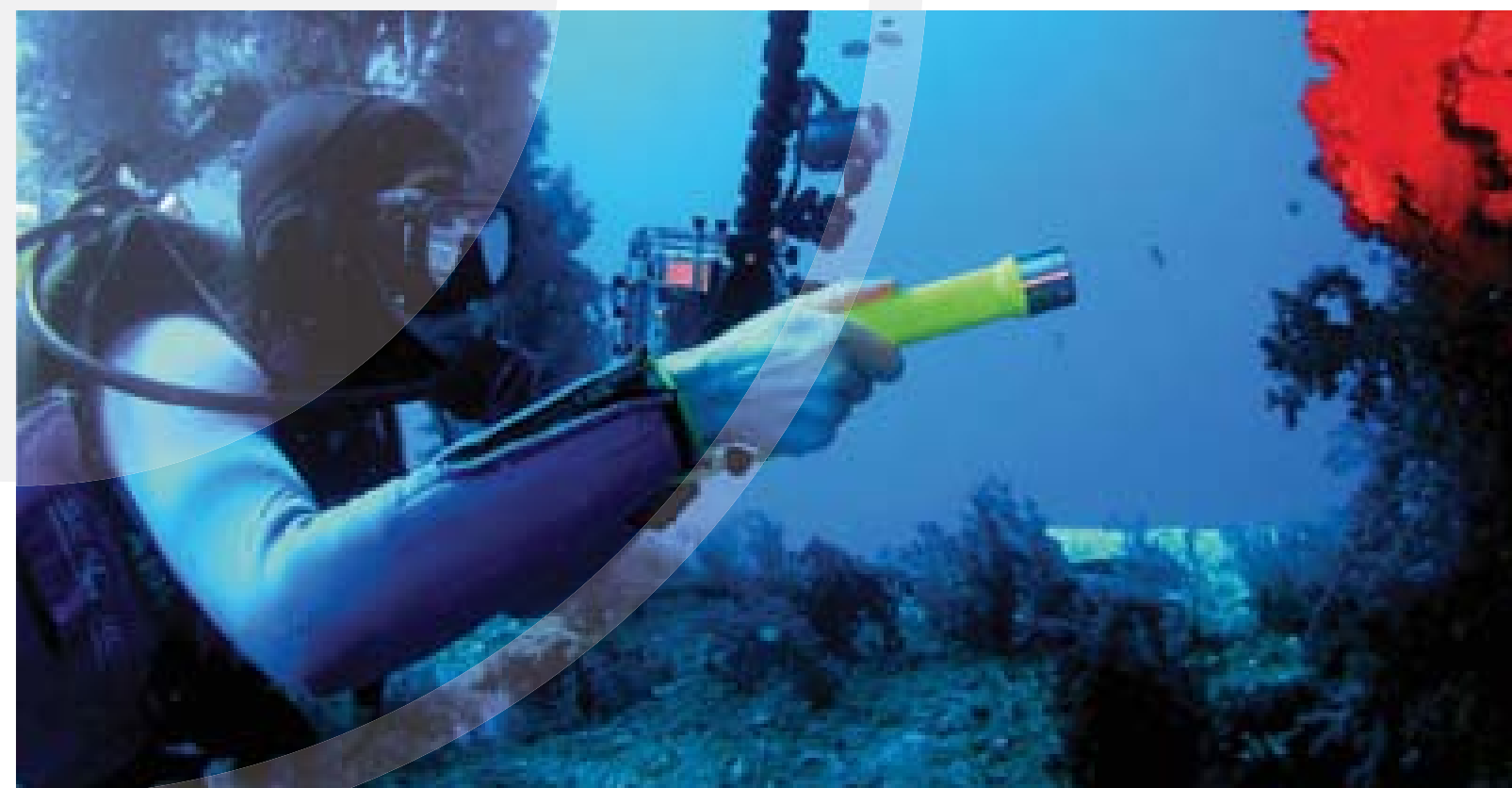
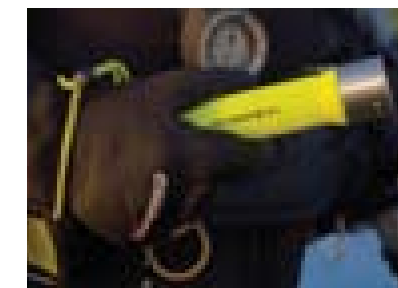
Type	Size	Weight	Power Supply
Handheld	161x42mm	235gms	4 x AA Alkaline Batteries

The diving torch with an outstanding range and an innovative magnetic switch. Made from a high-grade stainless steel head and shock resistant, shatter-proof barrel. Out of the water the D14 delivers a stunning beam distance of 180m. Divers will appreciate the magnetic switch designed to work just as well with or without gloves. A signal cone is also available as a separate accessory, see Page 47. The LED Lenser D14 is suitable for dives down to 60m / 7 bar.



“the brightest I have seen of its size”

Signal Cone Accessory
See page 47.



Automotive Rechargeable

7575	Automotive Rechargeable Silver in Gift Box			
7575CP	Automotive Rechargeable Silver in Blister Pack			
7875	Replacement Battery Pack			

Type	Size	Weight	Power Supply
Car /Hand	49x20mm	44gms	4 x Ni-Mh Batteries

This mini rechargeable torch with a super sleek stainless steel body is just the perfect size to keep handy in any car. Supplied with a multi-adaptor that fits most car lighter sockets, the Automotive Rechargeable is the ideal LED Lenser for your car.



P7 KIT

1200LO	P7 with Pressure Switch & Gun Mount in Gift Box			
--------	---	--	--	--

Type	Size	Weight	Power Supply
Gun/Hand	133x37mm	192gms	4 x AAA Alkaline Batteries

The ideal set for hunting, lamping and shooting at night. Our powerful P7 is supplied with gun mount and an additional pressure-pad switch which can be operated by hand or placed between teeth.

“fits my hunting and sporting rifles like a glove - great to use.”



PTF KIT

1061	PTF with Pressure Switch & Gun Mount in Gift Box			
------	--	--	--	--

Type	Size	Weight	Power Supply
Gun/Hand	126x32mm	144gms	3 x AAA Alkaline Batteries

Pressure sensitive switch and our tactical Police Tech Focus with gun mount. A great combination for any Top Gun.

Active Series Key Features



	More Info (page)	L5	L6	L7	L7E	D14 Frogman	B7 Bike	P7 Gun Set	PTF Gun Set	Automotive Rechargeable
Size (mm)		130x33	160x34	133x37	136x39	161x42	133x37	133x37	126x32	49x20.5
Weight (g)		114	144	135	115	235	192	192	144	44
Lumens	3	85	105	115	28	150	200	200	115	13
Beam Distance (M)	3	150	200	225	93	180	210	220	220	13
Burn Time (hrs)	3	3	8	42	47	20	64	52	52	34mins
IPX Rating	3	54	54	54	54	8	54	54	54	54
Rechargeable										
Patented Advanced Focus System	4									
Easy-Slide Speed Focus	5									
Twist Focus										
Twist Switch										
End Cap Switch										
Barrel Switch										
Dynamic Switch - Boost	5									
Dynamic Switch - Power	5									
Dynamic Switch - Low Power	5									
Steel Casing										
Aluminium Casing	7									
Polycarbonate Casing										
Gold Plated Contacts										
Wrist Strap										
Belt Pouch										
Batteries Included										

HEAD TORCHES



HEAD TORCH SERIES

Sunning performance, sensational features and supreme comfort are brought together in this ultimate range of Head Lamps that also incorporate the world-class patented technologies that LED Lenser is rightly renowned for.



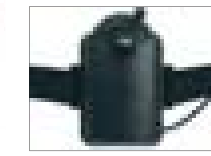
Head Fire Revolution

7868TP Head Fire Revolution Black in Test-It Pack



Type	Dimensions	Weight	Power Supply
Head	-	120gms	3 x AAA Alkaline Batteries

Operated via three easily available standard AAA batteries, this fixed focus Head Lamp delivers a stunning 100 lumens of light. A dimmer switch on the battery pack allows for fine adjustment of the light strength and the light can also be directed within an angle of 90 degrees via the swivelling head. The reliable classic.



Dimmable



Swivelling

H3

1041TP H3 Black in Test-It Pack



Type	Dimensions	Weight	Power Supply
Head	-	114gms	3 x AAA Alkaline Batteries

The three high-end LEDs in this lightweight and comfortable Head Lamp deliver a superb bright white light that can be easily adjusted via the integrated dimmer switch on the battery pack. Additionally, the lamp head has been cleverly designed to swivel within an angle of 90° enabling the light to be positioned just where it is required.



Dimmable



Swivelling



H5

7495TP H5 Black in Test-It Pack



Type	Dimensions	Weight	Power Supply
Head	-	120gms	3 x AAA Alkaline Batteries

Elegant and technologically advanced. The H5 incorporates our patented Advanced Focus System, a world class technology that delivers a wide flood or sharply focused spot beam in an instant. Combined with directional lighting and a handy red back light which makes the user easier to spot from behind, the H5 is a great everyday head lamp.



Focusable



Swivelling



With Red Backlight





H7

7497 H7 Black in Box
7497TP H7 Black in Test-It Pack

150m 85h* 200 LUMENS*

Type	Dimensions	Weight	Power Supply
Head	-	115gms	3 x AAA Alkaline Batteries

This breathtaking Head Lamp turns night into day with its stunning output of 200 lumens from its single Power LED-Chip. The stunning level of light is matched with an array of features like the patented flood to spot beam Advanced Focus System optics, directional lamp head, an integrated dimmer switch on the battery pack and super comfortable adjustable head strap. The superb power to weight ratio of the H7 makes it the ideal choice where strong hands free lighting is desired.



H4

7494 H4 Blue in Box

20m 15h* 45 LUMENS*

Type	Size	Weight	Power Supply
Head/Hand	133x37mm	80gms	3 x AAA Alkaline Batteries

This bright little Head Lamp, via its protective storage case, cleverly transforms into a useful handheld torch and also a hands-free belt torch. The amazing 45 lumen are output via its three LEDs and its lightweight, (only 80g), makes the H4 a multi-purpose lamp that is particularly interesting for joggers. The handy integrated 360° belt clip on the case is a smart feature that allows the torch to be attached to a belt and for the light to be directed easily to just the right light angle required.



“so comfortable to wear I forgot it was there”

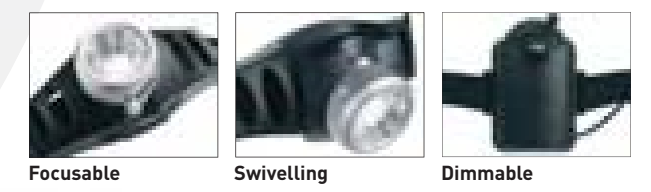
H7R

7498 H7R Rechargeable in Box
7498TP H7R Rechargeable in Test-It Pack
7749 Replacement 3xAAA Ni-Mh Batteries

150m 40h* 200 LUMENS*

Type	Dimensions	Weight	Power Supply
Head	-	120gms	3 x AAA NI-MH Batteries

An exceptional lighting range and all the features of the H7, the H7R is in addition rechargeable - making it the ideal choice for those who have a concern for the environment. Recharging is exceptionally easy and hassle-free as the rechargeable batteries (supplied) do not have to be removed from their housing in order to be charged. The charging wire supplied is dual function and cleverly enables either mains or USB charging.



H14 7499 H14 Black in Box
4-in-1

210m 13h* 210 LUMENS*

Type	Dimensions	Weight	Power Supply
Head	-	340gms	4 x AA Alkaline Batteries

H14 7499BP H14 Black in Blister Pack
3-in-1

210m 13h* 210 LUMENS*

Type	Dimensions	Weight	Power Supply
Head	-	340gms	4 x AA Alkaline Batteries

H14R 7499R 7706 H14R Black in Box Replacement 4xAA Ni-Mh Batteries
4-in-1

210m 25h* 220 LUMENS*

Type	Dimensions	Weight	Power Supply
Head	-	340gms	4 x AA NiMh

Innovation, technology and performance combine to offer one of the most outstanding head lamps available today. The unique hands-free application concept of this light makes it more than just a head torch. Thanks to its integrated intelligent attachment system the lamp is easily converted into a body/belt lamp or a mobile spotlight. In addition, the Universal Mounting Bracket enables mounting of the lamp onto bicycle handle bars, poles and rods. Outstanding functionality also deserves outstanding technology. Incorporating LED Lenser's multi-function Smart Light Technology and patented Advanced Focus System optics for instant spot or flood beam selection, the H14 is technology packed and truly the versatile all-rounder.

The H14R has all of the features and benefits of the H14 and in addition is mains rechargeable.

Note: The Universal Mounting Bracket is only supplied as standard with codes 7499 and 7499R. Code 7499BP does not include this accessory. If required separately as an accessory it can be ordered via code 0363.



Smart Light Technology

SLT Smart Light Technology

- 2 Energy modes
 - Energy Saving
 - Constant Current
- 3 Light programs
 - Professional
 - Easy
 - Defence
- 8 Light functions
 - Dim
 - Morse Tactical Task
 - SOS
 - Power
 - Low Power
 - Blink
 - Boost
 - Defence Strobe

Head Torch Series Key Features



	More info (page)	Head Fire Revolution	H3	H4	H5	H7	H7R	H14	H14R
Weight (g)		120	114	80	120	115	120	340	340
Lumens	3	100	60	45	25	200	200	210	220
Beam Distance (M)	3	150	31	20	70	150	150	210	210
Burn Time (hrs)	3	80	62	15	20	85	40	13	25
Rechargeable							●		●
Patented Advanced Focus System	4				●	●	●	●	●
Smart Light Technology - Full	15							●	●
Dimmable / Low Light		●	●			●	●	●	●
Swivelling Head / Directional Light		●	●		●	●	●	●	●
Back Light					●			●	●
Stretch-safe Flexi-cable		●	●		●	●	●		
Flexible Mounting Bracket	49							●	●
Dynamic Switch - Power Boost	5							●	●
Dynamic Switch - Power	5							●	●
Dynamic Switch - Low Power	5		●			●	●	●	●
Splash Proof		●	●	●	●	●	●	●	●
Belt Pouch		●	●	●	●	●	●	●	●
Batteries Included		●	●	●	●	●	●	●	●

ACCESSORIES

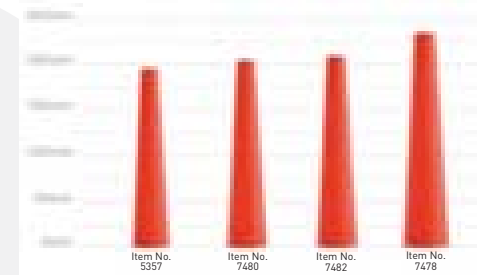
Outstanding torches deserve outstanding accessories. That is why we have gone the extra mile to bring you a range of accessories that will help you make the most of your LED Lenser torch.



LED LENSER®

Signal Cone

Simply put the signal cone over your torch, and you have a highly visible emergency signal at your disposal. For police officers and security personnel, the dazzle-free red light cone lends itself to directing purposes. The signal cone is also ideal for air traffic controllers because of its homogeneous light distribution and extreme brightness.



5357

Suitable for LED LENSER® PTF

7480

Suitable for LED LENSER® B7, L7, L7E, M7, MT7, M7R, M8, P7, T7

7482

Suitable for LED LENSER® D14

7478

Suitable for LED LENSER® M14, P14

LED LENSER®

Filter Pouch

Colour filters broaden the field of applications of your torch. Simply insert the desired filter colour into the detachable rubber holder at the front of the pouch. The pouch is easily attached to a belt via the integrated 360 degree clip that allows for a hands free directional beam.



0039

Suitable for the LED LENSER® B7, L7, L7E, M7, MT7, M7R, M8, P7, T7

LED LENSER®

Anti-Roll Filter Set

Perfect combination of roll protection and colour filter. The desired filter foil is simply placed inside the plastic holder and placed over the head of the torch. In this way you quickly get the desired light colour and the octagonal shape of the holder helps to prevent the torch from accidentally rolling away on uneven surfaces.

0313-F

Suitable for the LED LENSER® B7, H14, H14R, L7, L7E, M7, MT7, M7R, M8, P7, T7



LED LENSER®

Anti-Roll Protector

Roll Protection – indispensable for pros and easy to attach, it prevents the torch from rolling away on uneven surfaces. Furthermore, the plastic rings protect the lamp head and end cap against scratches and varnish abrasion.



Torch Holder

The ideal accessory to attach an X21, X21R or P17 to your own existing tripod.



Tripod



5713

Tripod Suitable for the LED LENSER® X21, X21R, P17

0312

Anti-Roll Protector Suitable for the LED LENSER® X21, X21R

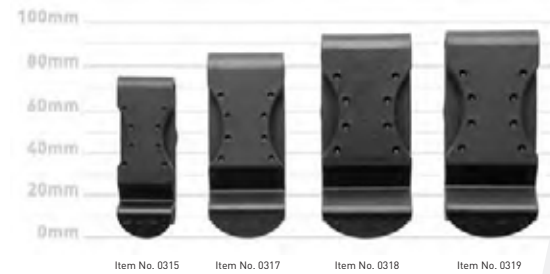
0311

Torch Holder for Tripods Suitable for the LED LENSER® X21, X21R, P17

LED LENSER®

360° Belt Clip

Thanks to the innovative design of this Clip, you can attach the torch to your trousers or belt at lightning speed leaving both your hands free. The Clip can be twisted easily to direct the torch light to any desired angle.



0315
Suitable for LED LENSER® M5, P5, P5R, T5, P6

0317
Suitable for LED LENSER® B7, L7, L7E, M7, MT7, M7R, M8, P7, T7, X7R

0318
Suitable for LED LENSER® P14

0319
Suitable for LED LENSER® M14, P17, X14

LED LENSER®

Touch Sensitive Remote Pressure Switch

Ideal for those that need light instantly and without the sound of a switch. The pressure pad can, for example, be placed in between teeth or against the trigger of a gun. The light only operates for as long as the pressure pad is depressed.



0364
Suitable for LED LENSER PTF

0361
Suitable for the LED LENSER® P7

LED LENSER®

Police Clip

Peter Jones clip designed to hold the torch securely to your uniform.

U-CLIP

LED LENSER®

Helmet Clip

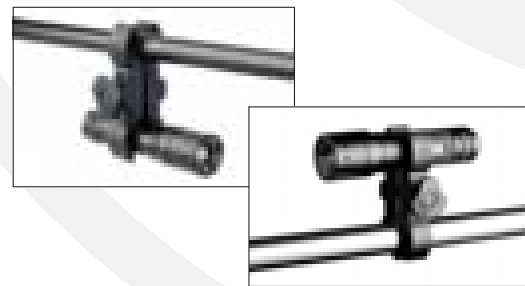
A pack of four standard clips designed to hold a head lamp to standard sized helmets.

H-CLIP

LED LENSER®

Uni-Mount

With the Uni-Mount, torches with a diameter of 25-34 mm can be mounted quickly and easily. You can attach your torch to guns, camera tripods or fishing rod tripods. Due to the special plastic, a high level of tensile strength is achieved with a low weight. The robust material ensures that the thread of the retaining screw does not fall out even under high stresses.



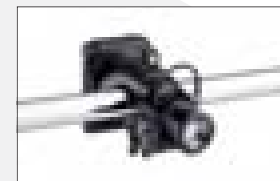
0362
Suitable for LED LENSER® B7, PTF, PTF-FS, L5, L6, L7, L7E, M1, M5, M7, MT7, M7R, M8, P5, P5R, P6, P7, T5, T7, V2 Pro, X7R

LED LENSER®

Mount H14/H14R Head Lamp

This Mounting Bracket is specially designed for the H14 and the H14R. The torch head and battery compartment of the headlamp can be attached easily and comfortably via a connector system. The robust design of the Mounting Bracket ensures that the H14(R) does not accidentally loosen even with strong, sudden movements.

The bracket is suitable for diameters of approx. 17 - 27 mm.



0363
Suitable for the LED LENSER® H14, H14R

LED LENSER®

Mount - Rotating

The practical bracket allows for quick and easy torch mounting and dismounting. In addition the head of this mounts rotates 360 degrees allowing the torch light to be direct as required.



7799
Suitable for LED LENSER® PTF, PTF-FS, L5, L6, V2 Pro

7799-PT
Suitable for LED LENSER® B7, L7, L7E, M7, MT7, M7R, M8, P7, T7, X7R

7799-PT5
Suitable for LED LENSER® M5, P5, P5R, P6, T5

LED LENSER®

Car Charger

Here's good news for owners of the H7R, M7R, P5R and X7R: From now on, you can recharge the three torch models that feature Lithium ion (H7R feature NiMh Accumulators) rechargeable batteries even when you're out and about. The charging set with USB port fits most cigarette lighters and takes up next to no space in the glove compartment because of its compact size.



0380
Suitable for the LED LENSER® H7R, M7R, P5R, X7R

LED LENSER®

Replacement Floating Charge System Contact Charger

A torch has never been so easy to recharge. Charger and torch are connected by the invisible forces of magnetism. When fully charged the indicator will turn green from red.



LL9748LO
Suitable for the LED LENSER® P5R

LL9747LO
Suitable for the LED LENSER® M7R

