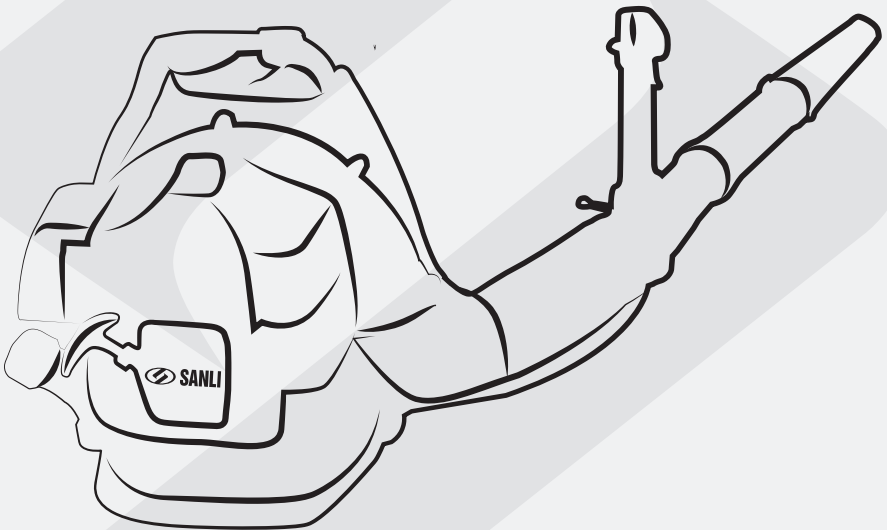




SANLI

BSB 33

Back-Pack Leaf Blower



PLEASE KEEP THIS MANUAL IN A SAFE PLACE

Contents

1. Guide to using this manual.....	1
2. Safety precautions.....	2
3. Maintenance and repair.....	6
4. Technical specifications.....	7
5. Parts list.....	8
6. Assembling the unit.....	8
7. Fueling.....	9
8. Starting/Stopping.....	11
9. Operating instructions.....	13
10. After finishing work.....	13
11. Storing the machine.....	15
12. Part pictures and lists.....	17
13. CE conformity.....	21
14. Notes.....	22
15. Warranty Card.....	28

Guide to using this manual

Graphic illustration

All the important parts of this machine are shown and explained in this manual. The operating and handling instructions are supported by graphic illustration.

Symbols in text

The individual steps or procedures described in the manual may be marked in different ways.

- Step or procedure without direct graphic illustration

In this manual step or procedure with direct graphic illustration and item numbers

Example:

Loosen the screws (1)

Lever (2)

In addition, you should pay special attention to some operating instructions. They are marked by the symbols described below:

Warning: there is a risk of an accident or personal injury or serious damage to property.

Warning: there is a risk of damaging the machine or individual components.

Note or hint: it is not essential for using the machine, but may improve the operator's understanding of the situation and result to use the machine better.

Note or hint: it is correct procedure in order to protect the environment.

Equipment and features

This manual refers to several models with different features. Components are not installed in all models and related applications are marked thus. Such components are available as special accessories from your dealer.

Technology improvements

Our management principle is to improve the quality continually. As a result, our technology is improved from time to time. If the operating characteristics or the appearance of your machine differ from those described in this manual, please contact your dealer for assistance.

Therefore, we cannot be responsible for changes, modifications or improvements that are not covered in this manual.

Safety precautions



Special safety precautions must be observed when working with the power tool.



It's important that you read, fully understand and observe the following safety precautions and warnings.

- Careless or improper use of any blower may cause serious or fatal injury.
- Your dealer has shown you how to operate your blower. Observe all applicable local safety regulations, standards and ordinances.
- Minors should never be allowed to use a blower.
- Bystanders, especially children, and animals should not be allowed in the area where a blower is in use.
- The operator has the responsibility to avoid injury to the third party and damage to their property.
- Don't lend or rent your blower without the owner's manual. Be sure that anyone using your blower understands the instructions contained in this manual.

You must be fit to work with a blower.

- Rested, health and in good physical and mental condition
 - If you get tired, take a break in good time
 - Do not operate the blower if you are under the influence of any substance(drugs, alcohol, etc.)which might impair vision, dexterity or judgment.
- Only accessories supplied are approved for use with your specific

model are authorized.

-Other accessories must not be used because of the increased risk of accidents.

-The company excludes all liability for personal injury and damage to property caused while using unauthorized accessories.

Wear proper clothing and equipment



Clothing must be sturdy and snug-fitting, but allow complete freedom of movement—the safety clothing is recommended.



Avoid loose-fitting jackets, scarves, neckties, jewelry, flared or cuffed pants, unconfined long hair or anything that could get into the air intake.



Wear sturdy boots with nonslip soles. Steel-toed safety boots are recommended.



Wear safety glasses, goggles or a face shield.
Wear sound barriers(ear plugs or ear mufflers) to protect your hearing.



Wear heavy-duty, nonslip gloves, preferably made of chrome leather.



Never touch a hot cylinder or muffler ,or burn will result.

Always stop the engine before refueling.



Gasoline is an extremely flammable fuel. Do not smoke or flame near the fuel. Do not fuel a hot engine—fuel may spill and cause a fire.

Remove the fuel filler cap on the unit carefully so as to allow any pressure build-up in the tank to release slowly.

Fuel your blower in well-ventilated areas, outdoors only. Wipe off any spilled fuel before starting and check for leakage.

Take care not to get fuel on your clothing. If this happens, change immediately.



Unit vibrations can cause an improperly tightened fuel cap to loosen or come off and spill quantities of fuel.

In order to reduce risk of fuel spillage and fire, tighten fuel cap.

On units with a screw cap: tighten the cap by hand with as much force as possible. On units with hinged handle on the fuel cap: Tighten as described in chapter “Fueling”

Check for fuel leakage while refueling and during operation. If fuel leakage is found, do not start or run the engine until the leak is fixed.

Store gasoline and oil in properly labelled, approved safety-type cans.

Transporting the unit

Always stop the engine.

Transporting in a vehicle: Properly protect the unit to prevent turnover, fuel spillage and damage. When the unit is not in use, put it down so that it does not endanger others.

Before starting

Check the following points

- Throttle trigger must move freely and spring back to idle position when released.
- Stop switch must move easily to “off”.
- Tightness of spark plug cap—if the cap is loose, sparks may occur and ignite the escaping fuel vapor.

Starting

- Start the engine at least 3m from the fueling spot, outdoors

only.

- To reduce the risk of breathing toxic fumes, never start or run your unit in confined spaces.

- Place the unit on firm ground in an open area.
- Make sure you have good balance and secure footing.
- Hold the unit securely.

Your blower is a one-person unit. Do not allow other persons to be near the running unit—even when starting.

For specific starting instructions, see chapter “Starting” in the owner’s manual.

During operation



Warning

Your blower produces toxic exhaust fumes when the engine is running. These gases (e.g. carbon monoxide) may be colorless and odorless. To reduce the risk of serious or fatal injury from breathing toxic fumes, never run the blower indoors or in poorly ventilated locations.

Ensure proper ventilation when working in trenches, hollows or other confined areas.



To reduce the risk of igniting the combustible fuel vapor and causing a fire, never smoke while working with or standing next to the blower.

Always hold your unit firmly—make sure you always have a firm and secure footing.

Examine the work area: Do not direct the air blast towards bystanders since the air flow can blow small objects at great speed.

Take care in slippery conditions

- On ice, in wet or snow
- On slopes or uneven ground

Watch out for obstacles

Roots, ditches, holes or rubbish which could cause you to trip

or stumble.

Warning: when spraying

To reduce the risk of inhaling poisonous fumes from chemicals and exhaust gases, do not operate the blower in confined spaces.

Walk forward only when the unit is running..

In an emergency, release the quick-action buckles, slip out of the harness and throw off the machine.

After finishing work, drain and clean the container.

Vibrations

Prolonged use of the unit may result in vibration-induced circulation problems in the hands.

No general recommendation can be given for the length of usage because it depends on several factors.

The period of usage is prolonged by:

- Hand protection (wearing warm gloves)
- Break

The period of usage is shortened by:

- Any personal tendency to suffer from poor circulation (symptoms: frequently cold fingers, itching)
- Low temperatures outside
- Gripping force (A tight grip hinders circulation)

Continual and regular users should monitor closely the condition of their hands and fingers. If any of the above symptoms appear, seek medical advice.

Maintenance and repairs

Do not attempt any maintenance or repair work not described in the owner's manual.

Have such work performed at your service shop only.

Never modify your power tool in any way as this could result in serious injury.

Always stop the engine and disconnect the spark plug cap before doing any maintenance or repair work or cleaning the

machine.(Exception: carburetor and idle adjustments.)

Always clean dust and dirt off the machine after finishing work.

Do not store or service your unit near any fire or flame

----Check fuel cap regularly for leak

----Use only the approved spark plug (see specifications) and make sure it is in good condition

----Inspect ignition wires (insulation in good condition, secure connect)

----To reduce the risk of fire due to ignition outside the cylinder, move the stop switch to OFF before turning the engine over on the starter with the spark plug cap removed or the spark plug unscrewed.

----Check the condition of muffler periodically

----To avoid the risk of fire or hearing loss, do not operate your unit if the muffler is damaged or missing.

----Never touch a hot muffler or burn will result.

Technical Specifications

Model	BSB33
Displacement(cc)	32.6
Rated Power(KW/r/min)	0.9/8000
Idle Speed	2500±150
Carburetor style	diaphragm
Fuel Ratio	40: 1
Fuel tank capacity(L)	0.65
Air volume(m³/s)	0.2
Overall weight	8
Packing Dimention	420*350*420

Parts List

- 1、 Main unit
- 2、 Blower pipe A
- 3、 Blower pipe B
- 4、 Blower pipe C
- 5、 Blower pipe D
- 6、 Control Box
- 7、 Hose
- 8、 (40: 1)Oil Can
- 9、 Clip

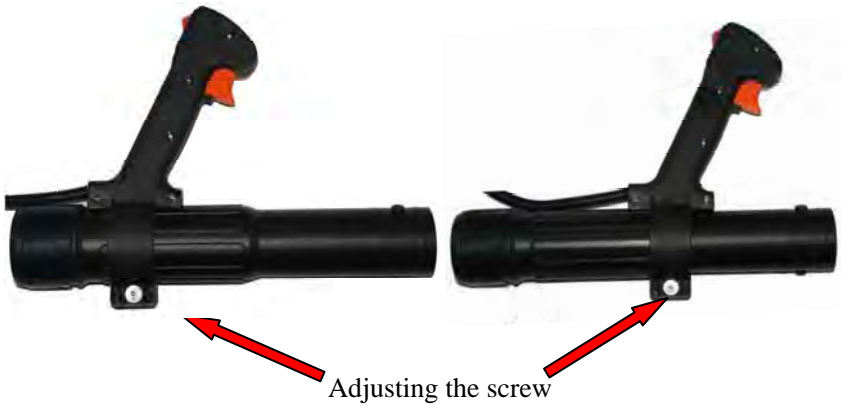


Assembling the unit



Adjusting the control handle

- Put the unit on your back
- Release the clamp screw
- Slide the control handle along the pleated hose to the most comfortable position
- Retighten the clamp screw



Adjusting the harness straps

- Pull the end of the straps downward to tighten the harness.

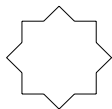
Loosening the harness straps

- Lift the tabs of the two sliding adjusters
- Adjust the straps so that the back plate is held firmly and comfortably against your back.



Fueling

Your engine requires a mixture of gasoline and engine oil. The quality of these constituents and the mixed ratio has a decisive influence on the function and service life of the engine.



Unsuitable fuel or lubricants or mixed ratio other than those specified may result in serious damage to the engine.

Gasoline

Use only regular branded gasoline with a minimum octane rating or 90#. If the octane rating of the regular grade gasoline in your area is lower, use fuel--leaded or unleaded.

For health and environmental reasons, you should give preference to unleaded gasoline.

If your machine is equipped with a catalytic converter, you must use unleaded gasoline.

A few leaded gasoline will greatly reduce the efficiency of the catalytic converter.

Engine oil

Use only quality two-stroke engine oil.

Other quality two-stroke engine oils must conform to classification TC.

Poor quality gasoline or engine oil may damage the engine, sealing rings, hoses and the fuel tank.

Mixing fuel

Avoid direct skin contact with gasoline and avoid inhaling gasoline vapor.

Use a container approved for storing fuel. Pour oil into the container first, then add gasoline, and mix thoroughly.

Mix ratio

Two-stroke engine oils (classification TC): 40 (gasoline): 1 (oil)

Storing fuel

Fuel ages:

Only mix sufficient fuel for a few months work. Store in approved safety-type fuel container in a dry and safe location.

- Thoroughly shake the mixture in the container before fueling your machine. Pressure may build up in the container—open it carefully.
- Clean the fuel tank and container from time to time.
Dispose of cleaning fluid properly at authorized disposal location.
- Before refueling, clean the filler cap and the area around it to ensure that no dirt falls into the tank.
- Position the unit so that the filler cap is facing up.
Take care not to spill fuel while fueling and do not overfill the tank.
After refueling, tighten down filler cap by hand as securely as possible.

Change the fuel filter once every year

- Drain the fuel tank
- Use a hook to pull the fuel filter out of the tank and take it off the hose.
- Push the new filter into the hose.
- Place the filter in the tank.



Starting/ stopping the engine

- Observe safety precautions—see chapter (Safety precautions)
- Move the lever to the center position—This is the oil-controlling setting.

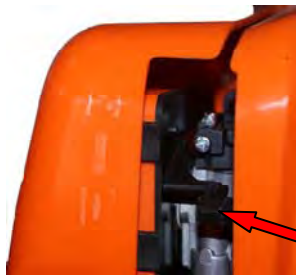
Notes:

- The lever can adjust the airflow volume.
- Put the lever on “0” before switching off the engine, and the engine will stop automatically.

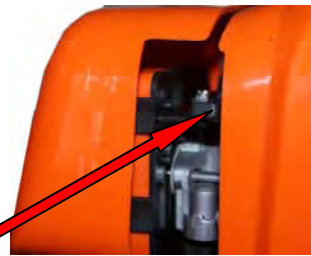


Before starting

Open the choke

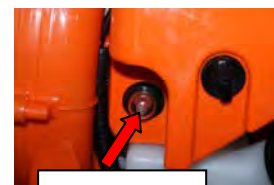


Close the choke



The choke lever

- If the engine is cold, close the choke
- If the engine is hot, open the choke fully. Also use this position when the engine has been running but is still cold.
- Press the oil pump at least 10 times (see the right picture)
- Put the unit on the ground. Check that bystanders are well clear of the general work area and the nozzle.



Oil pump

- Make sure you have a firm footing: Hold the unit with your left hand on the

housing and put one foot against the base plate to prevent it slipping.

- Pull the starter grip slowly with your right hand to 20cm and give it a brisk strong pull.
- Do not pull the starter rope out all the way as it might otherwise break.
- Do not let the starter grip snap back.
- Guide it slowly back into the housing so that the starter rope can rewind properly.

When the engine begins to fire:

- If the engine is cold, open the choke and continue cranking until engine runs
- If the engine is warm, continue cranking until engine runs.



As soon as engine runs:

- Move the lever to the center position so that the engine settles down to idle speed

Stopping the engine

- Move the lever to “0” then the engine will be turned off.

If the engine does not start

If you do not open the choke quickly enough after the engine begins to fire, the engine will stop.

- Remove the spark plug cap
- Unscrew and dry the spark plug
- Set the stop switch to OFF
- Pull the starter rope several times to clear the combustion chamber
- Fit the spark plug and reconnect the spark plug cap
- Move the stop switch to ON
- Open the choke even if the engine is cold
- Now start the engine



Fuel tank run until dry and then refueled

- Pull the starter rope at least 10 times

Operation instructions

During break-in

A new machine should not be running at high speed. This avoids unnecessary high loads during the break-in period. As all moving parts have to be fitted during the break-in period. The frictional resistances in the engine are greater during this period. The engine develops its maximum power after about 5 to 15 tank fillings.

During operation

After a long period of full-throttle operation, allow engine to run for a while at idle speed so that the heat in the engine can be dissipated by flow of cooling air. This protects engine-mounted components (ignition, carburetor etc.) from thermal overload.

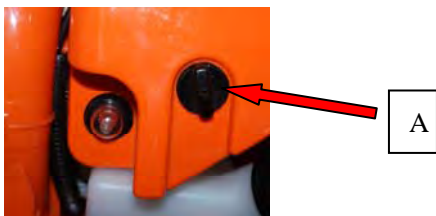
After finishing work

Storing for short period:

Wait for engine to cool down. To avoid condensation, fill the fuel tank and keep the unit in a dry place until you need it again. Storing for a long period: see chapter “Storing the machine”

Cleaning the air filter

Dirty air filters reduce engine power, increase fuel consumption and make starting more difficult.



If there is noticeable loss of engine power

- Close the choke
- Pull A and remove the air filter cover
- Remove the filter from the cover and inspect it. If it is dirty or damaged, clean the filter or fit a new one.
- Install the filter
- Fit the cover and tighten the screws

Carburetor

General information:

Your carburetor comes from the factory with a standard setting.

This setting provides an optimum fuel-air mixture under most operating conditions.

The high speed screw alters the engine power output and the maximum off-road engine speed.

If the setting is too lean, there is a risk of engine damage due to insufficient lubrication and overheating.

Checking the spark plug

If engine is down on power, difficult to start or runs poorly at idle speed, first check the spark plug.

- Remove the spark plug, see “starting/stopping the engine”
- Check electrode gap A (0.6-0.7mm) and adjust if necessary, see “specifications”

Rectify the problems which have caused fouling of spark plug

----Too much oil in fuel mixture

----Dirty air filter

----Unfavorable running conditions



Fit a new spark plug after about 100 operating hours, or sooner the electrodes are badly eroded.

- If the spark plug comes with a detachable adapter nut, screw it firmly.
- Press the cap firmly onto the spark plug



Engine running behavior

If engine running behavior is unsatisfactory even though the air filter is clean and the carburetor properly adjusted, the cause may be in the muffler.

Have the muffler checked for contamination by dealer.

Storing the machine

For periods of about 3 months or longer

- Clean the fuel tank
- Run the engine until carburetor is dry---This helps prevent carburetor diaphragms sticking together.
- Thoroughly clean the machine—pay special attention to the cylinder and air filter
- Store the machine in a dry, high or locked location out of the reach of children and other unauthorized persons
- Do not expose the container to direct sunlight for unnecessarily long period. UV rays can make the container material brittle, which could result in leaks or breakage.

Minimum wear and avoid damage

Observing the instructions in this manual helps reduce the risk of unnecessary wear and damage to the power tool.

The power tool must be operated, maintained and stored with the due care and attention described in this owner's manual.

The user is responsible for all damage caused by non-observance of the safety precautions, operating and maintenance instructions in this manual. This includes in particular:

- Alteration or modifications to the product not approved by dealer.
- Using accessories, power tool accessories or cutting tools not approved by dealer.
- Using the product for purpose for which it was not designed.
- Using the products for sports or competitive events
- Continuing to use the product with defective components

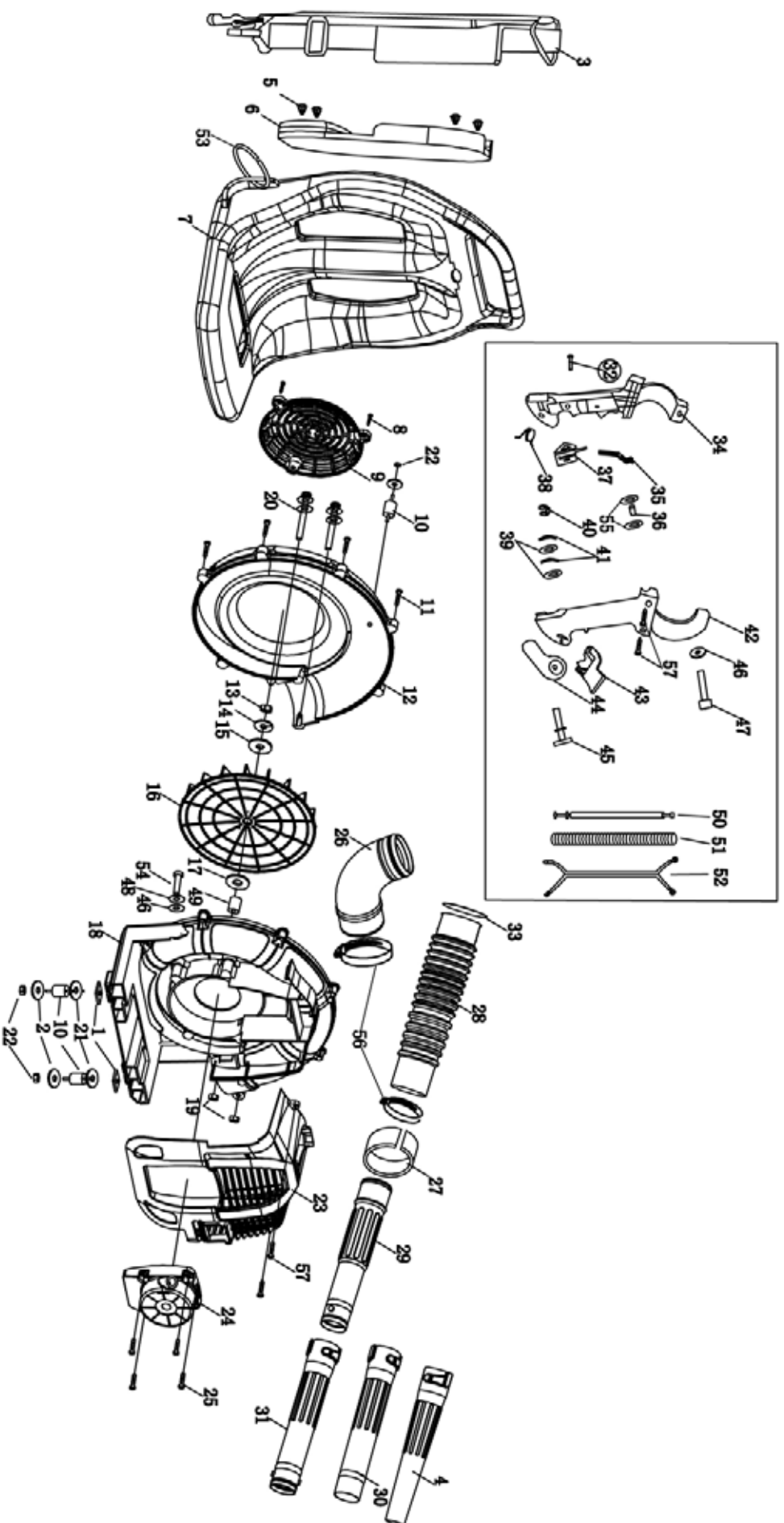
Maintenance and repair

All the operations described in the Maintenance chart must be performed on a regular basis. If these maintenance operations can not be performed by the owner, they should be performed by an authorized dealer.

If these operations are not carried out as specified, the user assumes responsibility for any damage that may occur. Among other things, this includes:

- Damage to the engine due to neglect or deficient maintenance, incorrect carburetor adjustment or inadequate cleaning of cooling air inlets
- Corrosion and other consequential damage resulting from improper storage.

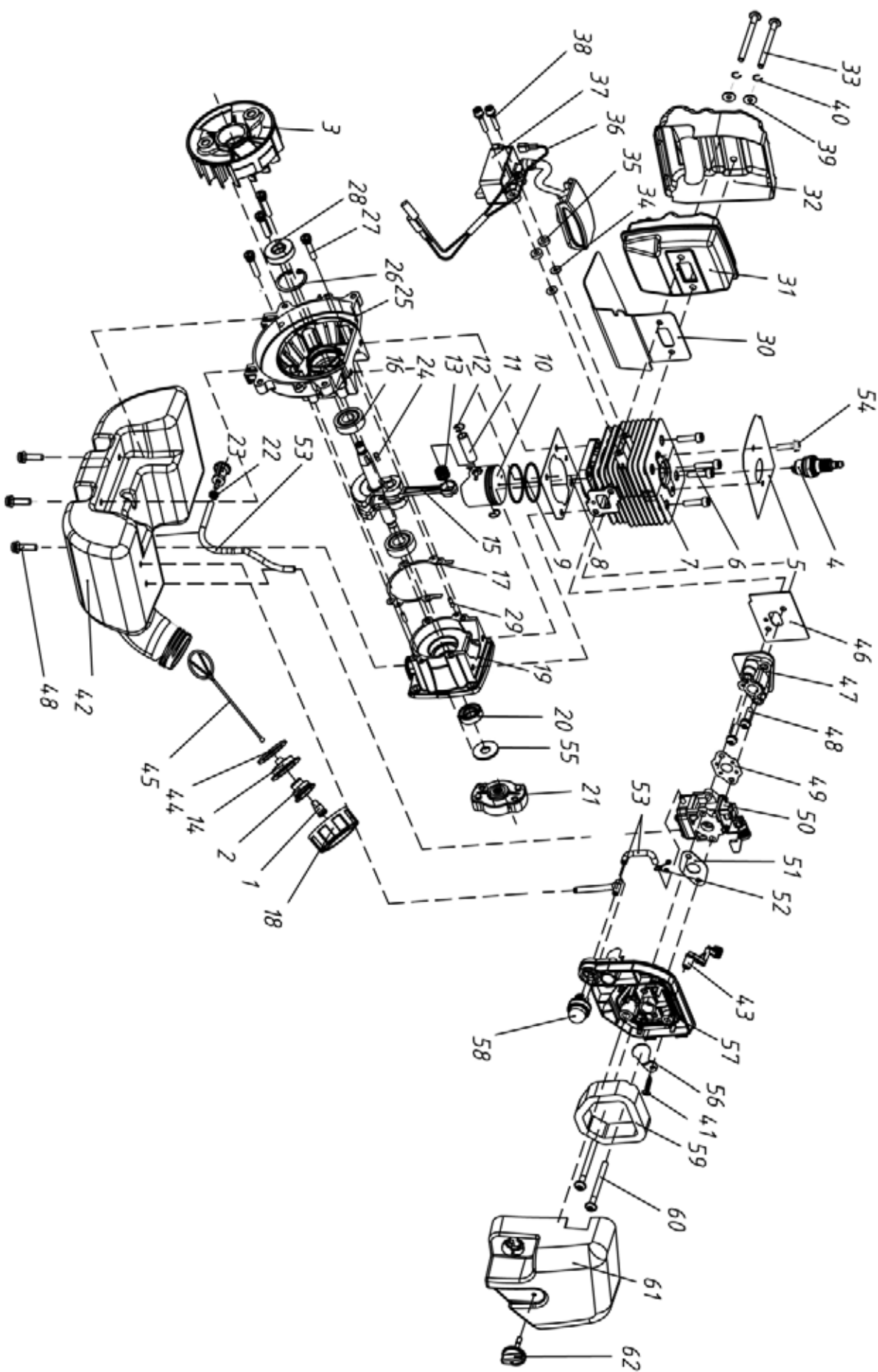
BSB33 BACK-PACK LEAF BLOWER EXPLOSIVE PICTURE



BSB33 BACKPACK LEAF BLOWER EXPLOSIVE PART LIST

Ser.No.	Erp No.	Part Name	Qty.	Ser.No.	Erp No.	Part Name	Qty.	Ser.No.	Erp No.	Part Name	Qty.
2-1	4305	M6 Nut	3	2-22	4479	Lock nut M6 GB6177	3	2-43	0954	Throttle lever	1
2-2	3015	Washer 6	3	2-23	6425	Shield	1	2-44	0995	Retainer lever	1
2-3	7789	Harness Assy.	1	2-24	0210	Starter Assy.	1	2-45	2974	Handle shaft	1
2-4	6549	Blower Pipe C2	1	2-25	3004	M5*16 Screw	4	2-46	6536	Washer \varnothing 5 GB/T96	5
2-5	0157	Nylon clip	4	2-26	6453	Bend Pipe	1	2-47	1173	Screw M5X20 GB/T70.1	1
2-6	1222	Back Cushion	1	2-27	6465	Revolving joint	1	2-48	7813	Spring Washer 5	4
2-7	6411	Frame	1	2-28	6518	Hose	1	2-49	1227	Spindle sleeve	1
2-8	7986	Tapping screw ST5*16	3	2-29	6527	Blower Pipe A	1	2-50	1309	Throttle wire	2
2-9	6412	Fan guard	1	2-30	6526	Blower Pipe B	1	2-51	0010	Threaded pipe 10	1
2-10	4809	Shock Absorption	3	2-31	6545	Blower Pipe C1	1	2-52	1330	Lead wire	1
2-11	7150	Tapping screw ST5*25	6	2-32	4318	Screw ST2.8X18	5	2-53	0300	Pull-tab, straps	2
2-12	6414	Rear fan cover	1	2-33	2916	Steel clamp	1	2-54	4282	Screw M5*35	4
2-13	7212	Nut M8*1.25	1	2-34	3048	Left control handle	1	2-55	4329	Washer \varnothing 4	2
2-14	4281	Spring Washer 8	1	2-35	2913	Wafer, stop switch	1	2-56	3715	American hose clip	2
2-15	2994	Washer 8	1	2-36	3049	Spindle sleeve	1	2-57	7151	Screw ST4.2*22	4
2-16	6416	Flywheel	1	2-37	1026	Stop switch	1				
2-17	2779	Gasket 26*9*1.25	1	2-38	2917	Returnning spring	1				
2-18	6420	Front fan cover	1	2-39	3015	Washer \varnothing 6 GB/T96	2				
2-19	4419	M5 nut	2	2-40	6074	Retainer ring \varnothing 4 GB/T864	1				
2-20	4429	M5*50 Screw	2	2-41	6098	Saddle gasket	2				
2-21	4543	Washer \varnothing 8 GB862	2	2-42	3047	Right control handle	1				

BSB 33 GASOLINE ENGINE EXPLOSIVE PICTURE



BSB33 GASOLINE ENGINE

Item No.	Part No.	Part Name	Qty.	Item No.	Part No.	Part Name	Qty.	Item No.	Part No.	Part Name	Qty.
1	8817	Valve,fuel cap	1	23	0554	Fuel filter comp	1	45	1273	Stopper	1
2	8574	Holder,valve	1	24	3365	Woodruff key	1	46	2890	Gasket,insulator	1
3	5689	Rotor	1	25	3826	Front crankcase	1	47	0377	Insulator	1
4	3480	Spark plug RCJ6Y	1	26	4538	Retaining ring 28	1	48	1848	Bolt assy M5X20	5
5	3823	Baffle of cylinder top	1	27	1164	Bolt M5X25	4	49	1154	Gasket,carburetor	1
6	5711	Bolt M5X20	4	28	5599	Oil seal 12X28X7	1	50	8042	Carburetor comp	1
7	3824	Cylinder	1	29	4567	PIN	2	51	1153	Gasket,carburetor	1
8	6168	Gasket,cylinder	1	30	1146	Gasket,muffler	1	52	1141	Clip , pipe	1
9	5607	Ring,piston	2	31	1041	Muffler assy	1	53	1277	Pipe	3
10	5606	Piston	1	32	6132	Heat shield	1	54	2323	Bolt M5X12	2
11	5608	Pin,piston 9X31	1	33	4247	Bolt M5X55	2	55	3357	Washer GB/T896	1
12	5609	Ring, snap	2	34	4451	Washer 4	2	56	1339	Choke	1
13	6616	Needle bearing	1	35	3477	Space,ig coil	2	57	4220	Base, cleaner	1
14	8579	Holder,stopper	1	36	2104	Wire, lead	1	58	4926	Primer pump assy	1
15	3650	Crank shaft assy	1	37	1133	Ignition coil comp.	1	59	6137	Air filter element	1
16	0473	Bearing 6001/P53	2	38	4242	Bolt assy M4X20	2	60	4402	Bolt assy M5X60	2
17	5603	Gasket,crankcase	1	39	6536	Washer 5	8	61	6590	Cover, cleaner	1
18	6268	Cap,fule tank	1	40	7813	Washer 5	8	62	6609	Knob,cover	1
19	3825	Rear crankcase	1	41	4240	Bolt ST3×12	1				
20	0047	Oil seal 12X22X7	1	42	4224	Fule tank	1				
21	0874	Starter pulley comp.	1	43	964	Chock handle	1				
22	1180	Clip , pipe	1	44	0064	Gasket,fuel cap	1				

EC DECLARATION OF CONFORMITY

Fujian Jinjiang Sanli Engine Co., Ltd.

Declares that the following equipment manufactured by Fujian Jinjiang Sanli Engine Co., Ltd conforms to the following Directive(s):2000/14/EC,2006/42/EC,2004/108/EC and 97/68/EC of the European Parliament and of the council on the approximation of the laws of the Member States relating to the noise emission in the environment by equipment for use outdoors.

Equipment Category – Leaf Blower

Product Name/Model: Back Pack Leaf Blower /BSB33 & BSB60

Type/Serial No.: N/A

Net installed power:33cc & 56.5cc

The technical documentation is kept by:

Name:Mr.Liu Qingguo

Company: Fujian Jinjiang Sanli Engine Co., Ltd.

Address: Wuli Industrial Park, Jinjiang, Fujian, 362263,P.R.China

The conformity assessment procedure followed was in accordance with EN ISO3744:1995 and EN ISO 3746:1995, EN 15503:2009, EN ISO 12100-2/A1:2009, EN ISO 14982:1998 and annex V of Directive2000/14/EC.

Notified Body:

TÜV SÜD Product Service GmbH- Ridlerstrasse 65-80339 MÜNchen (Germany)

TÜV SÜD Product Service GmbH- Westendstrasse 65-80686 MÜNchen (Germany)

Measured Sound Power Level: 107dB(A)

Guaranteed Sound Power Level: 111dB(A)

A copy of this certificate has been submitted to the European Commission and to EU Member State UK.

Place of Declaration: Wuli Industrial Park, Jinjiang, Fujian, 362263,P.R.China

Date: 09/12/2010



Signed by: Mr.Hu Dingsheng

Position in Company : General Engineer

Name and address of manufacturer or Authorised representative:

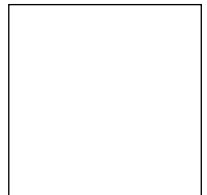
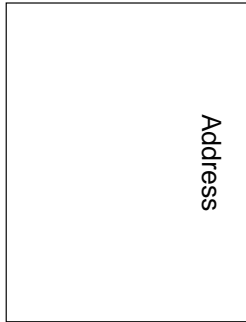
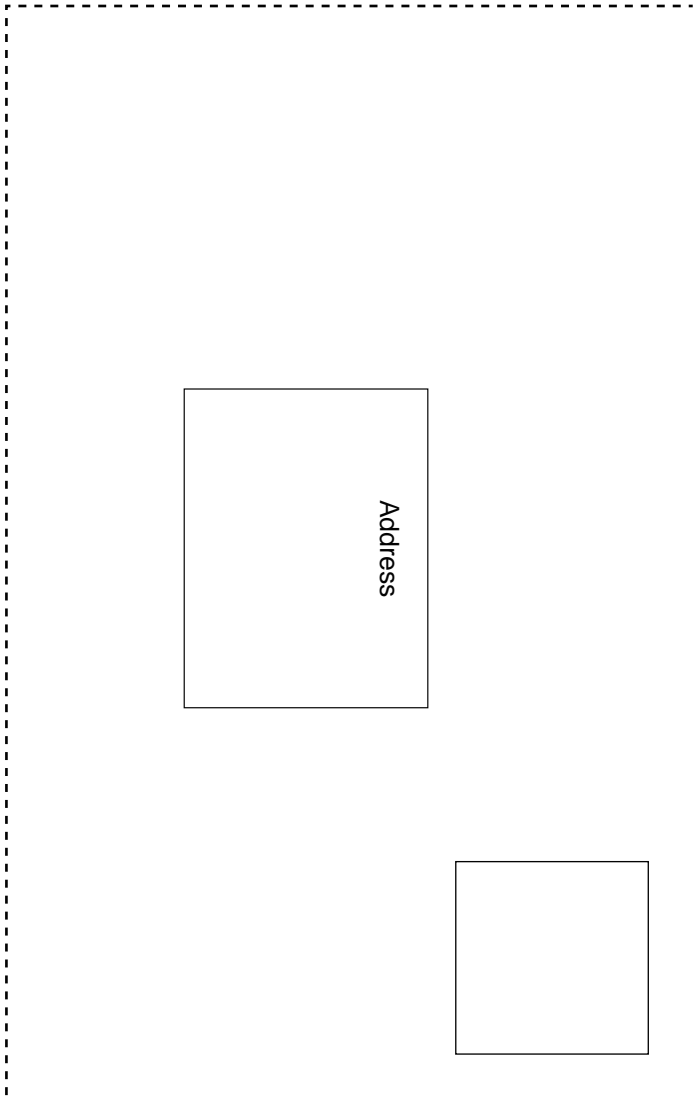
Fujian Jinjiang Sanli Engine Co.,Ltd.

Wuli Industrial Park, Jinjiang, Fujian, 362263,P.R.China



SANLI

BSB 33



WARRANTY CARD

REGISTER YOUR MACHINE TO VALIDATE YOUR WARRANTY.

To validate your warranty, register your equipment with SANLI after its purchase by returning the warranty card provided at the back of the user's manual or on the website www.sanli.co.uk/register, www.sanli.fr, www.sanli.com.au

Reference

BSB 33

Serial Number
S/N



• Guarantee •

By signing, the user certifies that:

- the instructions were provided and he/she has read the instructions regarding use, safety and maintenance;

- he/she has been provided with instructions to use the machine safely and correctly by the seller;

- he/she is aware of the conditions governing the guarantee contract and accepts them without reservation or restriction.

KEEP THIS PART

Reference

BSB 33

Purchase date

Sanli UK Ltd

Unit 200 Milton Park Estate
Abingdon Oxfordshire OX14 4TB
www.sanli.co.uk

SANLI FRANCE SAS

Service garantie 10, Rue
Gutenberg 67610 LAWANTZENAU
www.sanli.fr

Sanli Australia Development P/L

4/100 Belmore Road,
Riverwood, Nsw 2210
www.sanli.com.au

USER

Surname	
First name	
Address	
Town	
Postcode	Country
Tel	Mobile
Email	

DISTRIBUTOR

Customer No:
Imprint / Company Name
Address
Town
Postcode

Check this box if you do not want to receive any commercial or technical information from SANLI.

Purchase date

Signature

Serial Number
S/N