

# The right fit

When it comes to the right fit, you can count on Snickers Workwear. In fact, whatever your measurements, we have the garment for you. We use the EU standards for clothes sizes to ensure the right size, quickly and easily – even on the other side of the border. Our garments are available in many sizes. For your convenience, we keep all standard sizes in stock. This ensures speedy deliveries. What's more, we take pride in being able to offer special sizes – it may take a little longer, but it's well worth it. Whatever the case, count on a perfect fit. For details, contact your local Snickers Workwear distributor.

Size chart, male

JACKETS

Height	Chest	35"	38"	41"	44"	49"	52"	55"	Height
182– cm		XS Long	S Long	M Long	L Long	XL Long	XXL Long	XXXL Long	6' 2"
170–181 cm		XS Reg	S Reg	M Reg	L Reg	XL Reg	XXL Reg	XXXL Reg	5' 8"
–169 cm		XS Short	S Short	M Short	L Short	XL Short	XXL Short	XXXL Short	5' 4"
	Chest	–88 cm	89–96 cm	97–104 cm	105–112 cm	113–124 cm	125–132 cm	133– cm	

TROUSERS, ONEPIECE, SHORTS

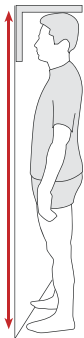
Inside leg	Waist	30"	31"	33"	35"	36"	38"	39"	41"	44"	47"	Inside leg
–91 cm		244	246	248	250	252	254	256	258	260	262	37"
85–90 cm		144	146	148	150	152	154	156	158	160	162	35"
79–84 cm		44	46	48	50	52	54	56	58	60	62	32"
73–78 cm		84	88	92	96	100	104	108	112	116	120	30"
–72 cm		184	188	192	196	200	204	208	212	216	220	28"
	Waist	–76 cm	77–80 cm	81–84 cm	85–88 cm	89–92 cm	93–96 cm	97–100 cm	101–104 cm	105–112 cm	113– cm	

TIPS ON SIZING:

Measure tight! The measuring tape must be snug around the body when measuring, the measurements people take are usually too long because the measuring tape is not tight enough.

Height

Dressed without shoes, measure standing next to a wall.



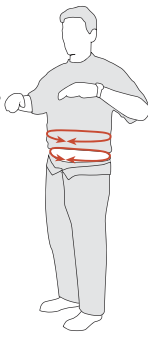
Chest

Dressed in a T-shirt, you should measure with a measuring tape around your chest just below your armpits.



Waist

Dressed in briefs or with trousers undone and lowered. Top raised, measuring tape where you usually have the waistband of your trousers. If you are measuring for a one-piece suit, be sure to measure where you have your biggest measurement, perhaps around the stomach.



Inside leg

Dressed in trousers but without shoes, measure standing next to a wall.

