

# CONTENTS

INSTRUCTIONS	3
SPECIFICATIONS	3
PARTS LIST	4
ASSEMBLY DIAGRAMS	5 - 6
ASSEMBLY INSTRUCTIONS	7

# INSTRUCTIONS

## Tools Required for Construction

Flat Head Screwdriver  
Two Medium Adjustable Wrenches

**Note:** Do not completely tighten screws until the assembly is complete.  
For easier assembly we recommend two people assemble this product.

## Warnings

- Do NOT load the Garden Trolley with more than 350kgs.
- Do NOT allow children to use the trolley unsupervised - it is NOT a toy.
- Always distribute the load evenly over the surface of the bed.
- Lower the Side Panels when loading items into the trolley.
- Do NOT inflate tyres to more than 30psi.

**Please check all parts are present before assembly.**

## SPECIFICATION

Model	THGTL-A
Overall Dimensions (cm)	140L x 64W x 65H (exc. draw bar handle)
Internal Dimensions (cm)	19L x 58W x 30H
Load Capacity	350kg
Wheels	Pneumatic 30cm diameter with bearings

## PARTS LIST

No	Part No	Description	Quantity
1	TH122-1	Bed	1
2	TH122-2	Side Panel	2
3	TH122-3	Front Panel	1
4	TH122-4	Back Panel	1
5	TH122-5	Wheels	4
6	TH122-6	Rear Axle Support	1
7	TH122-7	Left Rear Axle Brace	1
8	TH122-8	Right Rear Axle Brace	1
9	TH122-9	Front Axle Support	1
10	TH122-10	Centre Front Axle Brace	1
11	TH122-11	Yoke	1
12	TH122-12	Steering Link Connector	1
13	TH122-13	Handle Coupler	1
14	TH122-14	Pull Handle	1
15	TH122-15	Tractor Pull Adaptor	1
16	TH122-16	R-Clips	8
17	TH122-17	Cotter Pin	1
18	TH122-18	Lock Handles (pre-attached)	4
19	TH122-19	Washer	15
20	TH122-20	Lock Nut	15
22	TH122-22	Cap Nuts	4
23	TH122-23	Large Washers	4
24	TH122-24	Steering Bolts	3
25	TH122-25	M8x60 Pull Handle Bolts	1
26	TH122-26	M8x15 Carriage Support Bolt	10
27	TH122-27	M8x25 Steering Bolt	1
28	TH122-28	Wheel Spring Washers	4
29	TH122-29	Large Yoke Washer	1
30	TH122-30	Tractor Pull Bolt	1
31	TH122-31	Small R-Clip	1

## Main Frame Parts

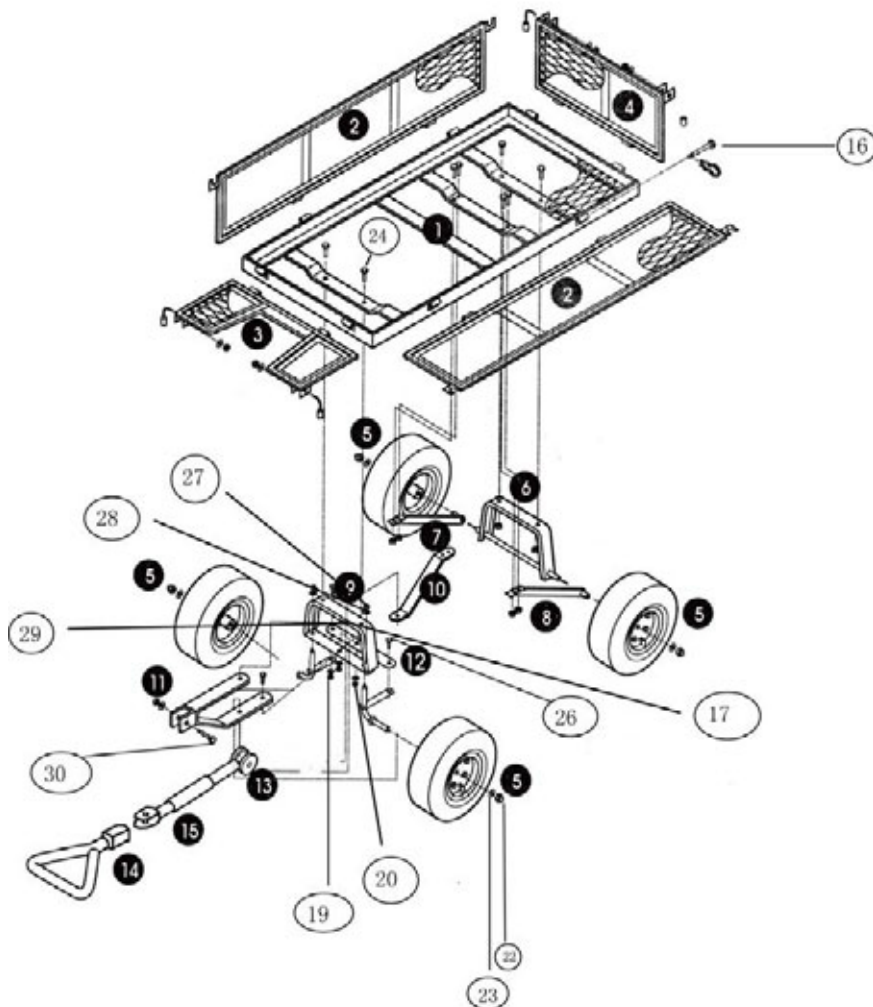
1. TH122-1  
Bed  
(1 item)
2. TH122-2  
Side Panel  
(2 item)
3. TH122-3  
Front Panel  
(1 item)
4. TH122-4  
Back Panel  
(1 item)
5. TH122-5  
13 500-6 Wheels  
(4 item)

## Rear Support Assembly

6. TH122-6  
Rear Axle Support  
(1 item)
7. TH122-7  
Left Rear Axle Brace  
(1 item)
8. TH122-8  
Right Rear Axle Brace  
(1 item)

## Front Support Assembly

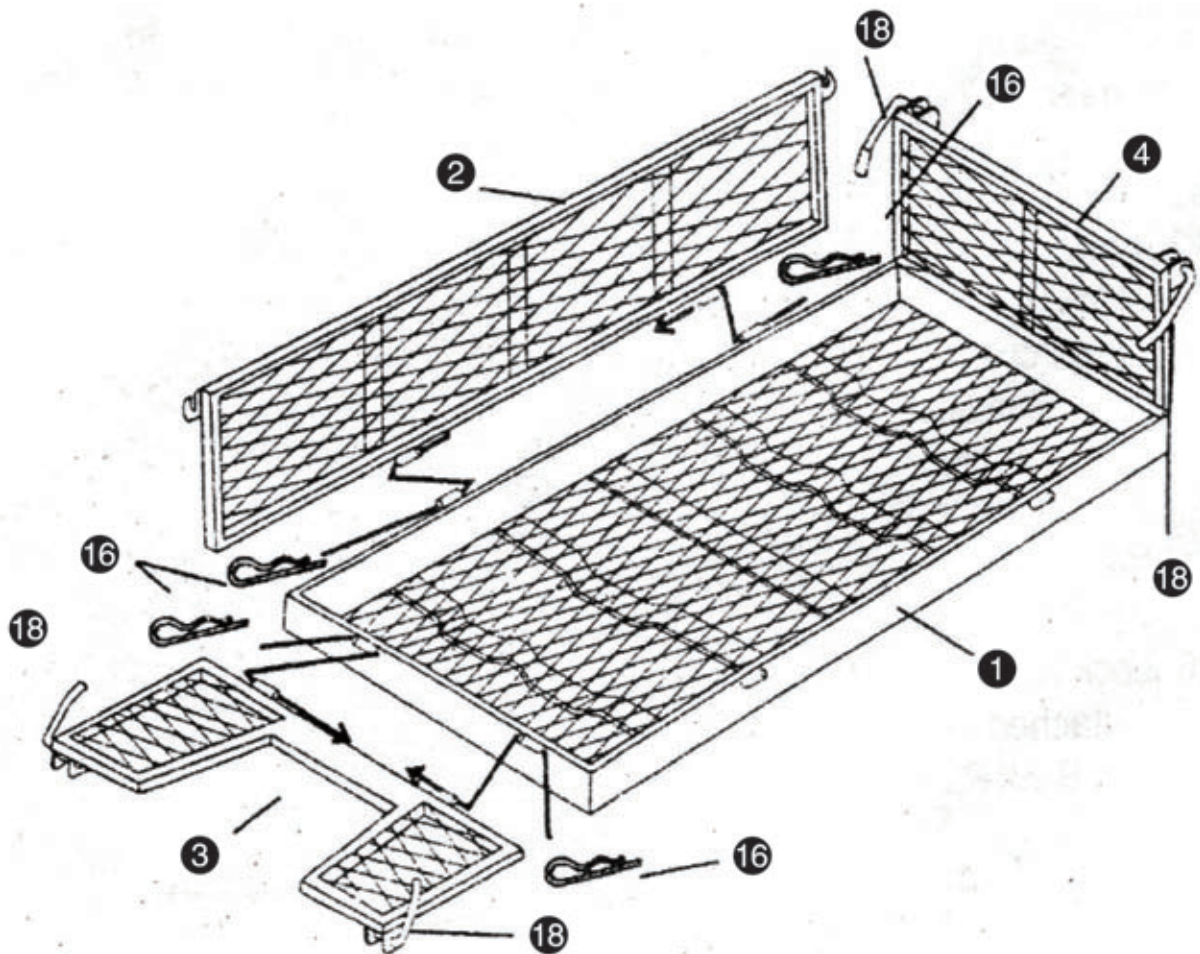
9. TH122-9  
Front Axle Support  
(1 item)
10. TH122-10  
Centre Front Axle Brace  
(1 item)
11. TH122-11  
Yoke  
(1 item)
12. TH122-12  
Steering Link Connector  
(1 item)
13. TH122-13  
Handle Coupling  
(1 item)
14. TH122-14  
Pull Handle  
(1 item)
15. TH122-15  
Tractor Pull Adaptor  
(1 item)



## Hardware

16. TH122-16  
R-Clip  
(8 item)
17. TH122-17  
Cotter Pin  
(1 item)
18. TH122-18  
Lock Handles (Pre-attached)  
(4 item)
19. TH122-19  
Washers  
(15 items)
20. TH122-20  
Lock Nuts  
(15 items)
22. TH122-22  
Cap Nuts  
(4 items)
23. TH122-23  
Large Washers  
(4 item)
24. TH122-24  
Steering Bolts  
(3 items)

25. TH122-25  
Pull Handle Bolt  
M8\*15mm  
(1 item)
26. TH122-26  
Carriage Support Bolt  
M8\*15mm  
(10 item)
27. TH122-27  
Steering Bolts  
M8\*25mm  
(1 item)
28. TH122-28  
Wheel Spring Washers  
(4 items)
29. TH122-29  
Large Yoke Washer  
(1 item)
30. TH122-30  
Tractor Pull Bolt  
(1 item)
31. TH122-31  
Small R-Clip  
(1 items)



### Main Frame Parts

- ① TH122-1  
Bed  
(1 piece)
- ② TH122-2  
Side Panel  
(2 pieces)
- ③ TH122-3  
Front Panel  
(1 piece)
- ④ TH122-4  
Back Panel  
(1 piece)

### Hardware

- ①⑥ TH122-16  
R-Clip  
(1 piece)
- ①⑧ TH122-18  
Lock Handles (Pre-attached)  
(4 pieces)

# ASSEMBLY INSTRUCTIONS

## Step 1

Turn the trolley bed upside down so that the underside is facing upwards.

## Step 2

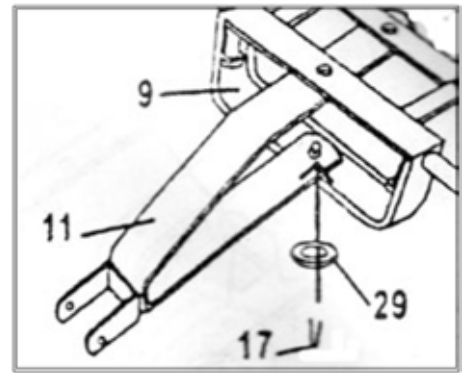
- a. Attach the Rear Axle Support (6) assembly to the bed by firstly attaching the Right and Left Rear Axle Braces (7 and 8) onto the threaded bar with the two bolt hole section facing inwards.
- b. Insert six Carriage Support Bolts (25) through the bed and secure with six Washers (19) and Nuts (20). The washers should always be inserted between the Nut and the assembly.

## Step 3

- a. Attach the Front Axle Support (9) to the bed by firstly, attaching the Centre Front Axle Brace (10) assembly to the Front Axle Support using a Bolt (26) and secure with a Washer (19) and Nut (20).
- b. Attach the Steering Link Connector (12) to the stub axles on the Front Axle Support using Bolts (23) and secure with Washers (19) and Nuts (20).

## Step 4

- a. Attach the top of the Yoke to the appendage located on the inside of the top of the Front Axle Support by inserting the Large Yoke Washer (29) and then the Cotter Pin (17) into the hole in the middle of the appendage.
- b. **Note: use a flat-headed screwdriver to separate and bend the end of the Cotter Pin outwards to lock into place.**



## Step 5

Attach the completed assembly to the bed using four Carriage Support Bolts (25), Washers (19) and Nuts (20).

## Step 6

- a. Slip the Wheel (5) onto the axle making sure that the tyre's valve stem is facing out. Secure using a Washer (22), a Spring Washer (27) and a Wheel Cap Nut (21).
- b. Repeat with the remaining tyres.

## Step 7

Turn the trolley bed over onto its wheels.

## Step 8

- a. Attach the Pull Adapter (15) to the bed/undercarriage by aligning the holes in the handle, handle coupling (13) and the front steering tab.
- b. Secure using the Pull Handle Bolt (24), Washer (19) and Nut (20).
- c. **If you wish to attach the trolley to a garden tractor, remove the end of the Pull Handle by undoing the clip, and attach the tow hitch directly to the tractor using the same clip.**

## Step 9

- a. Attach the Side Panels (2) to the bed by aligning the hinges in the Side Panel with the hinges on the trolley bed. The hinges should be facing outwards.
- b. Fasten using the Side Panel R-Clips (16) (one on each side).
- c. Attach the Front and Back Panels (3 and 4) in the same manner.
- d. Locate the Side Lock Handles through the tabs on the top right and left of the front and back Side Panels, ensuring that the threaded end faces inwards - towards each other. Lift the Side Panels into position and secure the Nuts (20).
- e. **Securely tighten all nuts before use.**

To order spare parts and see the complete range of garden machinery and garden equipment from Handy, visit:

**[www.thehandy.co.uk](http://www.thehandy.co.uk)**

Spares & Support: 01793 333212

