

CONTENTS

SAFETY INSTRUCTIONS	3
SPECIFICATIONS	4
FUEL	4
ASSEMBLY	5-7
HINTS AND TIPS	8
MAINTENANCE	9
PARTS DIAGRAM AND LIST	10-11
EC DECLARATION OF CONFORMITY	12

SAFETY INSTRUCTIONS

Read and understand the owner's manual and labels affixed to the chipper/shredder. Learn its application and limitations as well as the specific potential hazards. Retain these instructions for reference.

- Use sturdy footwear and wear eye and ear protection. Wear heavy duty gloves, preferably made of leather.
- Do **not** operate the machine if you are tired, ill or under the influence of alcohol or drugs.
- Do **not** smoke when using the chipper/shredder and ensure caution when handling fuel. We recommend you fuel the machine at least 3m away from where you wish to work in case any spilt fuel ignites when starting the engine.
- Ensure that bystanders, children and pets are at a safe distance when starting or shredding - at least 15m.
- Inspect the machine before each use for any worn or damaged parts. Do not use until the parts are repaired or replaced. Check that nuts, screws and bolts are securely fastened.
- Have a clear work area and secure footing and do not operate the machine in an enclosed area.
- Ensure that the plastic cover on the upper hopper is closed when the shredder is running to avoid any debris flying out.
- **Never** put your hands into the hopper to push material through. If necessary use a wooden stick. Do **not** use a metal implement.
- Take care that pieces of metal, glass or stone are not fed into the intake opening.
- If there is any vibration or abnormal noise coming from the machine during operation, switch off immediately and investigate before shredding any more material.
- Please recycle the cardboard packaging in which the shredder is delivered.



Always shut off the engine before moving it or attempting to clear any blockage.

SPECIFICATIONS

Model	THCS-65
Engine Displacement	196 cm ³
Starter	Recoil
Max Engine Speed	3600/min
Max Shaft Brake Power	4.8kW
Max Cutting Speed	2000/min
Max Branch Diameter	50mm/20in
Spark Plug	F7RTC - Gap=0.028-0.031in
Fuel Tank Volume	2000 cm ³
Oil Tank Volume	600 cm ³
Weight	70kg

FUEL

Petrol is very flammable. Avoid smoking or fuelling the shredder anywhere near a flame or spark. Allow the engine to cool before re-fuelling. Fuel the engine at least 3m away from your work area.

- Use fresh unleaded petrol and good quality four stroke engine oil (SAE10W30 or SAE10W40).
- Refer to the instructions on page 7, together with the separate engine instructions, for details of fuelling the machine.
- If the shredder is not going to be used for a long period, drain the mixture from the fuel tank, start the engine and drain the carburettor of any remaining fuel.
- Dispose of any unwanted oil at an authorised recycling point.

ASSEMBLY

- Unpack and check the contents. Some of the parts may be stored inside the hopper. Undo the two Phillips screws to access them, then replace and tighten the screws to secure the hopper cover.
- Assemble the shredder on a clean level surface - it is easier if there are two people.
- Remove the machine from the crate and place on a sturdy support as shown in Fig 1.
- Referring to Fig 2, attach the front foot to the machine.
- Remove the nuts from bolts 1 and 2; remove the bolts and pipe spacer.
- Align the discharge hopper to holes 1 and 2.
- Attach front foot 5 to the side and align the mounting holes 1 and 2.
- Put the pipe spacer back in place.
- Insert the bolts and secure tightly with nuts and washers.

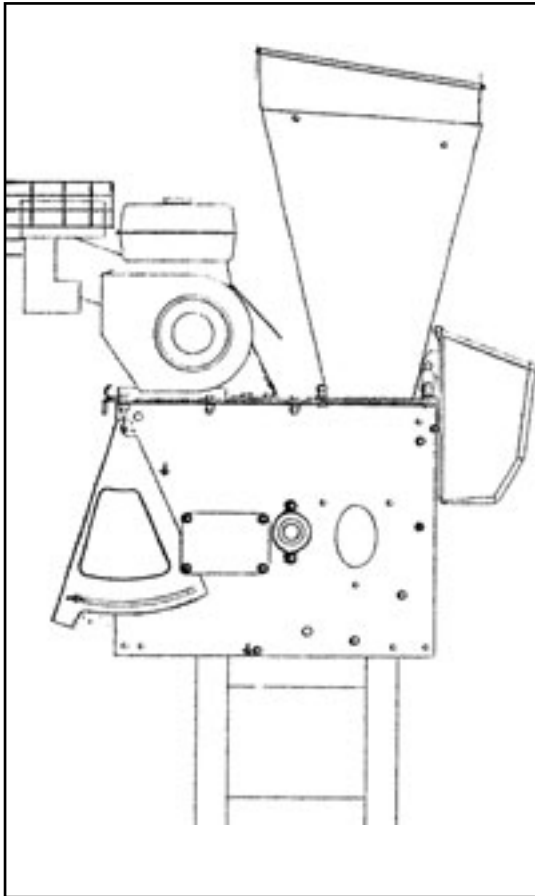


Fig 1

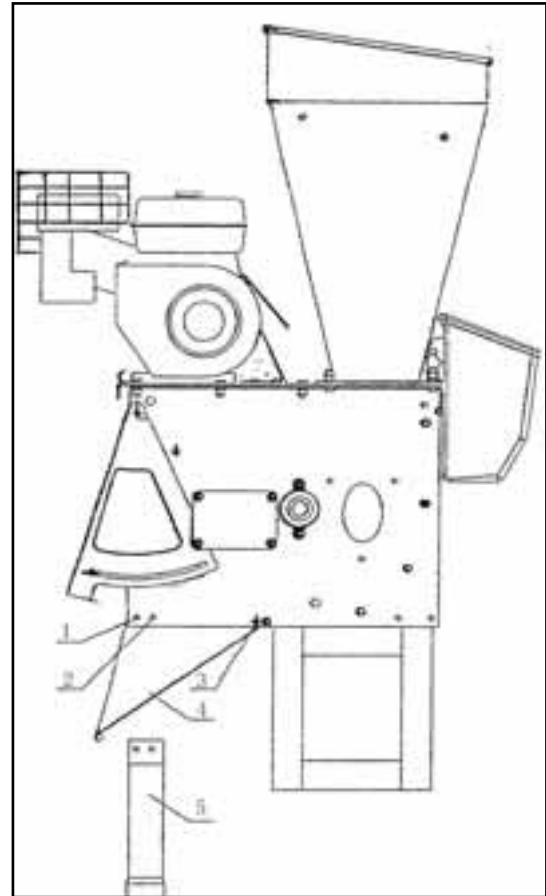


Fig 2

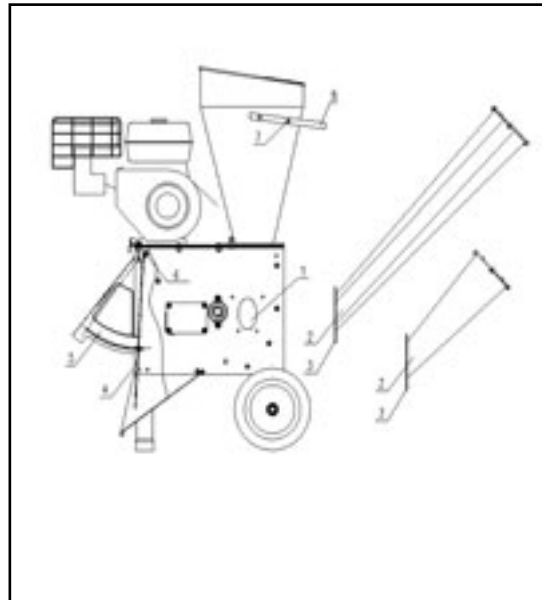
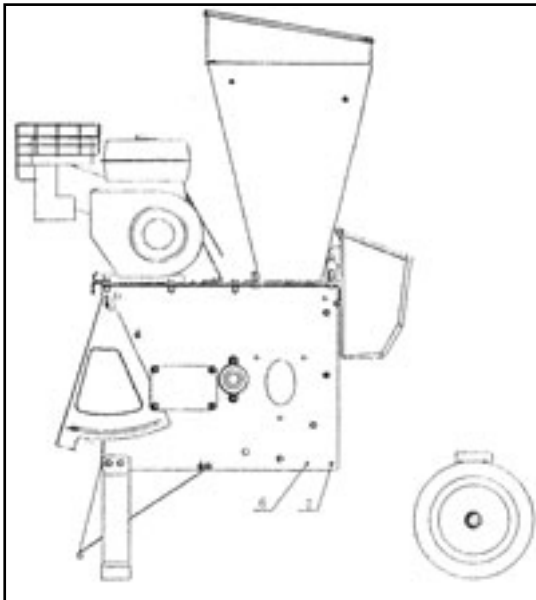
ASSEMBLY, cont'd

Attach the axle brackets, axle and tyres referring to Fig 3 below:

- Remove the sturdy support.
- Remove the bolt and pipe spacer 6 and 7
- Put the rear axle brackets in place and align the mounting holes with holes 6 and 7.
- Refit the pipe spacer and the long bolt 7, and secure tightly with a washer and nut.
- Insert bolt M8x20 into hole 6 and secure tightly with locknut.

Attach the chipper tube to the machine referring to Fig 4 below:

- Remove the nuts and washers of the two top threaded studs and loosen the bottom two nuts.
- Put the chipper tube 2 in place on the side by positioning the plate over the bottom studs and securing the nuts on the top studs.
- Secure the flange with washers and nuts M8.
- Make sure the tube is located at the correct angle and take care to locate the steel flange on the chute into the aperture in the body. Finger tighten then tighten the nuts.



ASSEMBLY, cont'd

Mounting the Frame:

- The steel frame can be used as a handle grip.
- Firstly attach the steel bar on both the left and right side of the hopper using screws.
- Put the frame on the bars and fix it by tightening the screws.
- Then tighten the screws on the hopper.

Finally check that all screws, bolts and nuts are securely tightened. Do this every time you use the machine.

The chipper/shredder is supplied without fuel or oil.

Using the separate engine instructions as your guide, fill the oil tank with good quality engine oil - SAE10W30 or SAE10W40. Check the level with the dipstick ensuring that it is 10-15mm from the top of the tank.

Fill the fuel tank with unleaded petrol - again do not fill closer than 10-15mm from the top to allow for expansion.

Wheel the shredder to the work site and place a collection receptacle under the discharge chute (or allow the shreds to fall to the ground).

Starting the Chipper/Shredder:

- Fill with fuel and oil as directed above.
- Turn the ignition switch on the engine to the "I" or "On" position.
- Fully close the choke.
- Pull starter cord until the engine fires/ignites, then gradually open the choke fully.
- Allow the engine to run for 2 minutes before starting work to allow the engine to warm up.
- Adjust the throttle as necessary.

Stopping the Chipper/Shredder:

- Reduce the engine speed by adjusting the throttle.
- Turn the ignition switch to "O" or "Off" position.

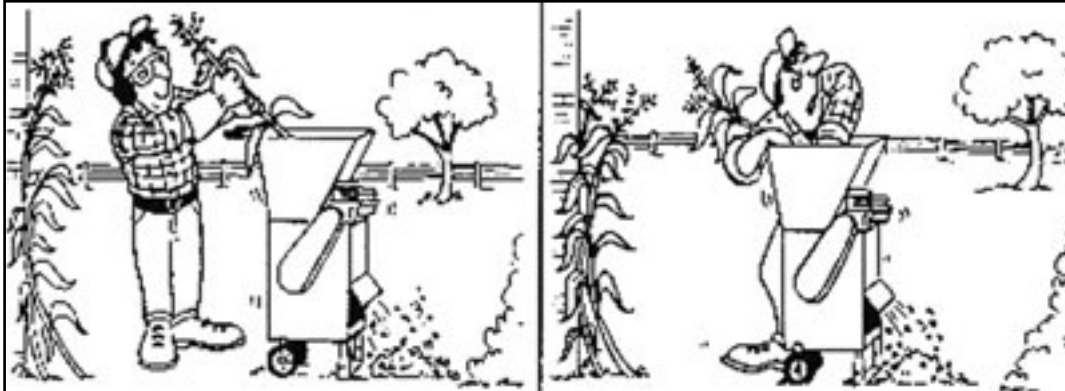
HINTS AND TIPS

Wood Chipping:

- Long branches such as tall flower stems or branches should be fed into the side chipping chute for chipping by the rotating blade.
- Some side shoots may have to be trimmed from the main branch before feeding.
- Short stubby branches can be pushed through the chipper section using the next longer branch - **never** use your hands.
- Similarly push the last branch through using a wooden stick to guide, **not** your hands.
- Feed larger branches slowly and observe the maximum diameter of 50mm/20in.
- Do not allow a build-up of shavings/chipping to accrue underneath the shredder. It may interfere with the discharge chute.
- **Always use wooden tools to clear any blockage, not metal or your hands!**

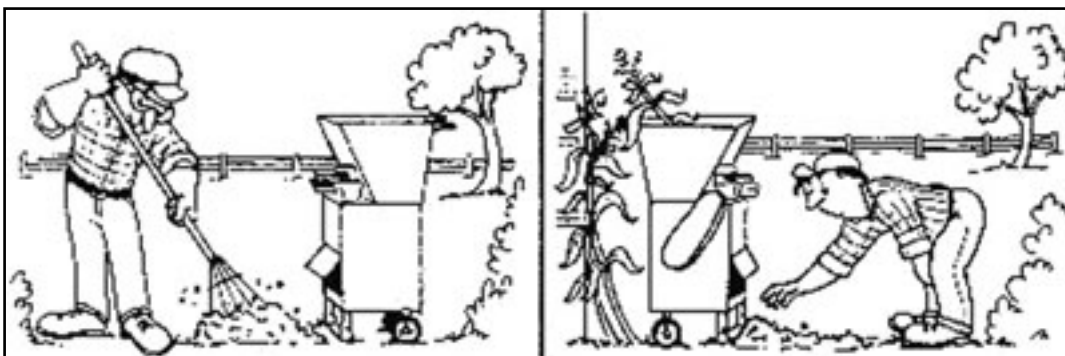
Leaves and Grass Shredding:

- Do not open the plastic cover when adding more material.
- Leaves and grass will be difficult to feed automatically into the hopper - use a wooden stick to push in - **not** your hands!
- Do **not** lean over the hopper in case any material flies back out.
- The shredder is more likely to block up if the material is wet or full of sap. Leave fresh prunings for a day or two to allow them to dry out before shredding.



Correct

Incorrect



Correct

Incorrect

MAINTENANCE

Adjusting the Belt:

There is a “V” belt under the belt cover, which transmits energy from the engine to the blade tray. After some use the belt may stretch and become loose so it will be necessary to adjust the tension.

- Turn off the engine and remove the belt cover.
- Loosen the four location nuts on the engine.
- Move the engine forward until the “V” belt is tight.
- Put the main pulley and affiliated pulley in the same plane (using a ruler to check).
- Tighten the four location nuts on the engine.
- Replace the belt cover.

Replacing the Belt:

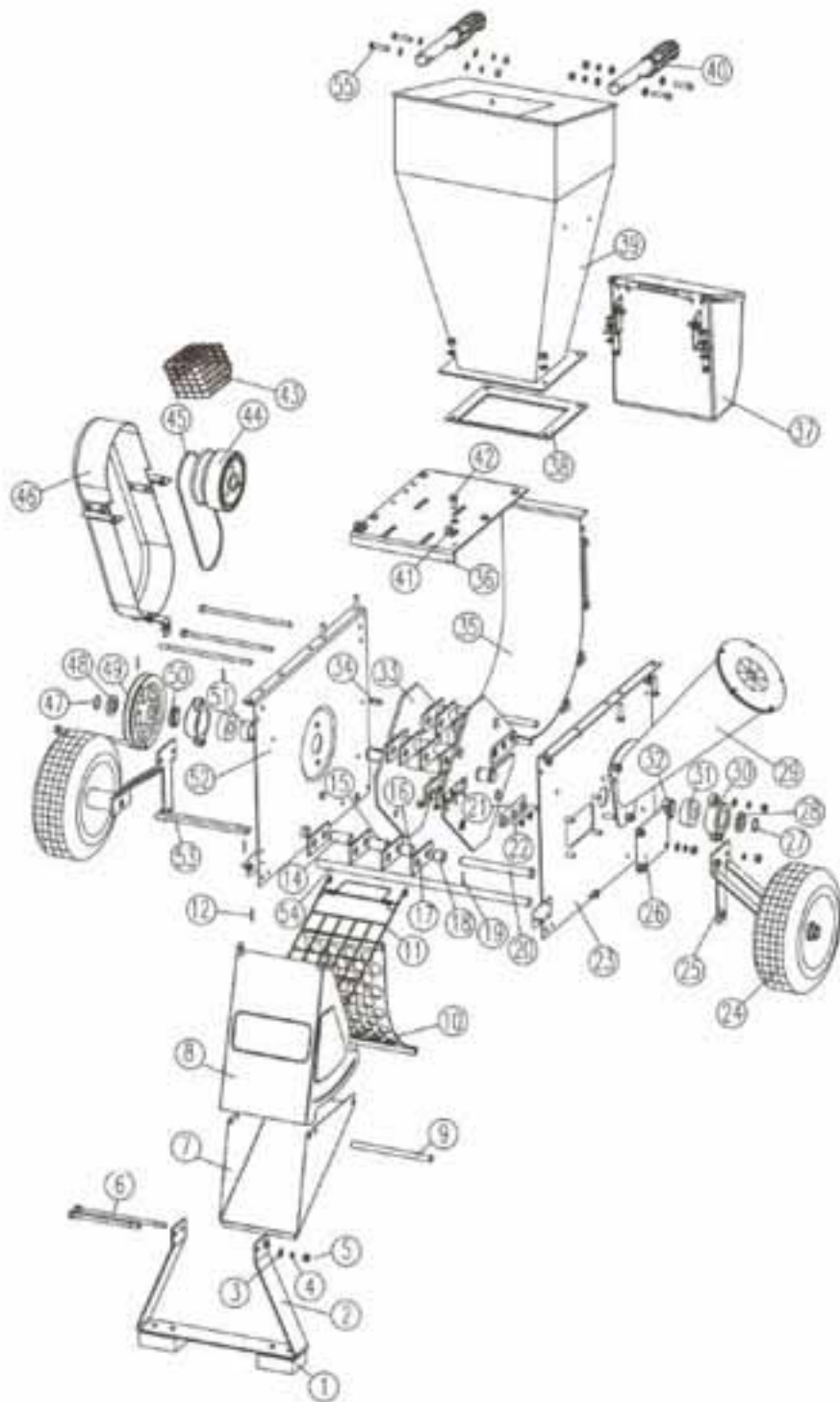
The “V” belt may need replacing if it becomes too long or is damaged.

- Turn off the engine and remove the belt cover.
- Carefully remove the old belt.
- Place the new belt in the main pulley first (“V” belt on engine) and then on to the affiliated pulley beside the blade tray.
- The new belt will be tighter than the old, so this can be a little tricky.
- Replace the belt cover.

Adjusting the Hammer:

There are 16 hammers in the machine box - when the blades run fast these hammers crush the material into small pieces. In time the cutting edge of the hammers may become blunt. Initially you only need to turn the hammers over 180 degrees, but when both sides are blunt they will need replacing. This must be done by an authorised service dealer.

PARTS DIAGRAM



PARTS LIST

No	Part No	Description	Qty	No	Part No	Description	Qty
1	TH105-1	Rubber Foot	2	28	TH105-28	Washer	1
2	TH105-2	Front Support	1	29	TH105-29	Side Chute	1
3	TH105-3	Flat Washer	1	30	TH105-30	Bearing Housing	2
4	TH105-4	Spring Washer	1	31	TH105-31	Bearing	2
5	TH105-5	Nut	1	32	TH105-32	Cushion	1
6	TH105-6	Long Bolt	3	33	TH105-33	Blade Drum	1
7	TH105-7	Discharge Chute	1	34	TH105-34	Belt Key	1
8	TH105-8	Flap	1	35	TH105-35	Rear Panel	1
9	TH105-9	Tube	4	36	TH105-36	Engine Seat	1
10	TH105-10	Screen	1	37	TH105-37	Tool Box	1
11	TH105-11	Safety Grid	1	38	TH105-38	Rubber Gasket	1
12	TH105-12	Pin	2	39	TH105-39	Hopper	1
14	TH105-14	Bush	4	40	TH105-40	Handle Grip	2
15	TH105-15	Bush	8	41	TH105-41	Hook	2
16	TH105-16	Bush	4	42	TH105-42	Hex Bolt	1
17	TH105-17	Hammer Flail	16	43	TH105-43	Exhaust Guard	1
18	TH105-18	Bush	4	44	TH105-44	Clutch	1
19	TH105-19	Pin	4	45	TH105-45	V Belt	1
20	TH105-20	Hammer Axis	4	46	TH105-46	Belt Cover	1
21	TH105-21	Blade	2	47	TH105-47	Cir Clip	1
22	TH105-22	Blade Screw	6	48	TH105-48	Belt Pulley	1
23	TH105-23	Left Steel Panel	1	49	TH105-49	Washer	1
24	TH105-24	Wheel	2	50	TH105-50	Washer	1
25	TH105-25	Rear Wheel Support	2	51	TH105-51	Cushion	1
26	TH105-26	Cover	1	52	TH105-52	Right Steel Panel	1
27	TH105-27	Cir Clip	1	53	TH105-53	Bolt	3
				54	TH105-54	Wheel Axle	1
				55	TH105-55	Bolt	4

EC DECLARATION OF CONFORMITY

Declaration of Conformity

Pursuant to the regulations of the following EC Directives:

- Machinery Directive 98/37/EC
- EMC Directive 89/336/EEC
- Noise Emissions Directive 2000/14/EC & 2005/88/EC

Handy Distribution Ltd hereby declares that the product:

Machine Type: Petrol Chipper Shredder

Machine Model: THCS-65

Mass in Kg: 70kg

Max Cutting Speed: 2000/min

Engine Speed: 3600/min

Net Installed Power: 4.8kW

Conforms to the main safety requirements of the EC Directives listed above.

This conformity is based on the following standards and normative documents:

EN 13683:2003

EN ISO 14982:1998

ISO 11094:1991

EN ISO 3744:1995

The conformity assessment procedure followed was in accordance with Annex III of the Directive 2000/14/EC.

Measured Sound Power Level: 108.4 dB(A)

Guaranteed Sound Power Level: 110 dB(A)

The responsible person, based within the EC, is identified below

Name: Mr Simon Belcher

Title: Managing Director

Company: Handy Distribution Ltd

Address: Hobley Drive, Stratton St Margaret, Swindon, Wiltshire. SN3 4NS

Signature:

Date: 15th October 2008