



Hand Operated Grease Guns

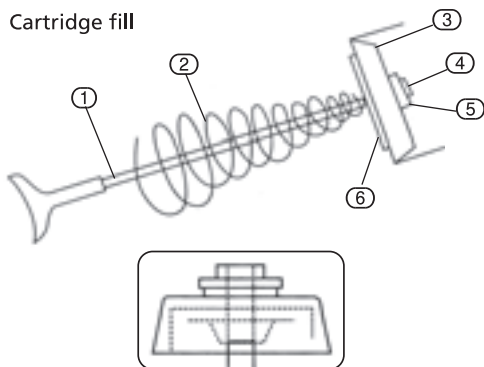
INSTRUCTIONS

1. ASSEMBLY

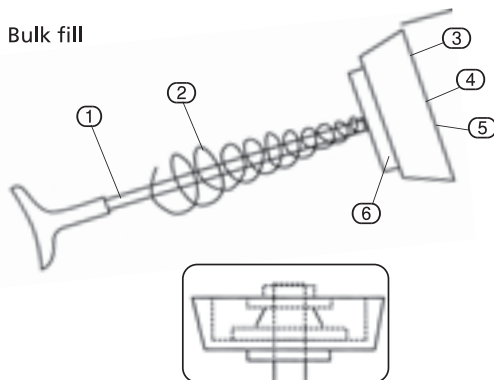
1.1 PLUNGER REASSEMBLY

The grease gun plunger assembly consists of the following parts, as shown:

Cartridge fill



Bulk fill



- ① Plunger rod.
- ② Plunger spring.
- ③ Grease resistant rubber plunger.

- ④ Plunger lock steel nut.
- ⑤ Plunger lock steel washer.
- ⑥ Plunger spring support washer.

1.2 PLUNGER REASSEMBLY:

Changing plunger direction from cartridge to bulk fill or vice versa :

1. Unscrew the grease gun head from the barrel.
2. Hold the grease gun barrel securely in a vice with the barrel open end facing upwards.
3. Use a spanner to unscrew the nut ④. At the same time press the rubber plunger ③ in the downward direction, using two fingers.
4. Be careful removing the nut ④, the rubber plunger assembly will be pushed outwards with pressure, due to compression of the plunger spring ②.
5. Remove nut ④, washer ⑤; and rubber plunger from the plunger rod. The rubber plunger is seated on a plunger spring support steel washer ⑥. Remove this washer as well.
6. Remove plunger spring from barrel.
7. Insert plunger spring ② back into the barrel, and place the washer ⑥ over the plunger rod, so that it sits on the plunger spring ②.

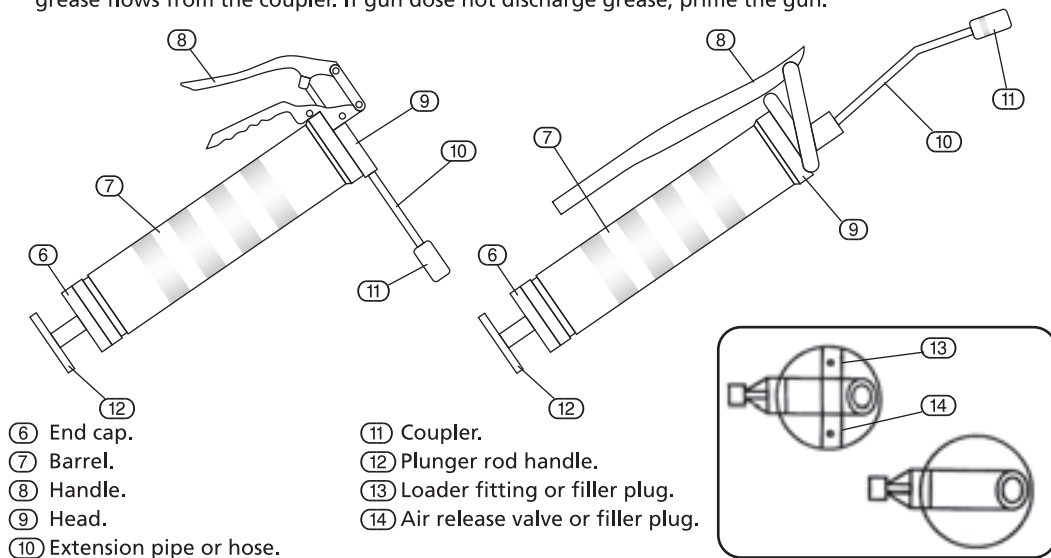
IMPORTANT: Ensure that the plunger is inserted into the barrel at an angle. The plunger will not fit the barrel if it is aligned straight on.

8. Slide the rubber plunger ③ over the plunger rod. For cartridge applications, the tapered end of the rubber plunger should be facing upwards, whereas for bulk fill applications, the hollow end of the rubber plunger should be facing upwards (towards the open end of the gun barrel). Insert the washer ⑤ over the plunger and screw the nut ④ onto the plunger rod. Tighten the nut using a spanner.
9. The gun barrel is now ready for use.

2. OPERATION

2.1 ASSEMBLY AND OPERATION:

1. Thread the steel extension tube & coupler assembly (or flexible hose & coupler assembly) to grease gun head outlet nozzle.
2. Refer to grease loading instructions for proper grease filling.
3. Before attaching the coupler to the grease nipple, operate the lever / pistol handle several times until grease flows from the coupler. If gun dose not discharge grease, prime the gun.

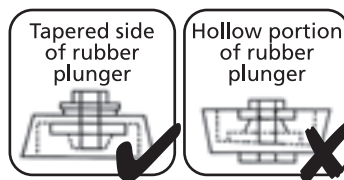


FOLLOW THESE INSTRUCTIONS FOR EFFICIENT PERFORMANCE FROM THE GUN

The grease gun can be filled using standard grease cartridge, suction fill or bulk fill using a filler pump.

2.2 HOW TO LOAD YOUR GREASE GUN WITH A CARTRIDGE:

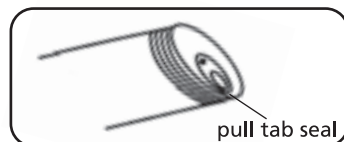
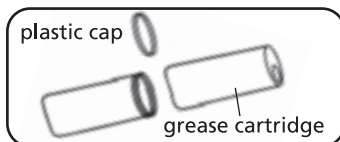
1. Unscrew the grease gun head from the barrel.
2. Check the rubber plunger direction before loading a new cartridge. The tapered side of the rubber plunger must be directed towards the grease gun head for cartridge loading.



3. Pull back the plunger rod handle fully.
The lock lever mechanism automatically locks the rod.

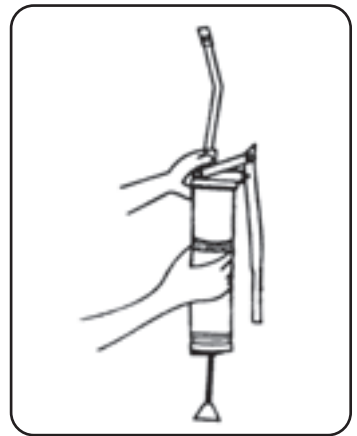


4. Remove the plastic cap from the cartridge and insert cartridge into the grease gun barrel, until the rim of the pull-tab end contacts the rim of the barrel. Then remove the pull-tab from end of the grease cartridge.



5. Screw the gun head back onto the barrel.

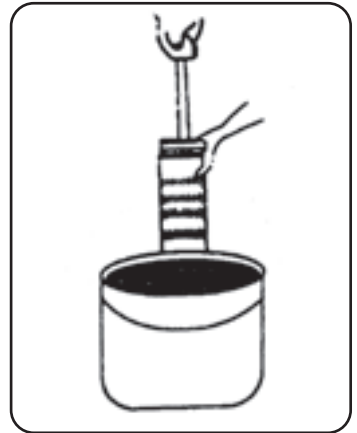
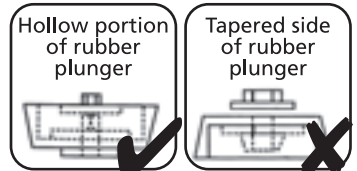
6. Unlock the plunger rod handle from the end cap by slightly pulling the plunger rod back and simultaneously depress the lock lever. This action automatically disconnects the plunger rod from the rubber plunger assembly, allowing the rod to be pushed all the way into the barrel.
7. To prime the grease gun, slightly loosen the gun head & apply pressure to the plunger rod handle by standing the grease gun on a workbench and pulling down on the barrel. Pushing the plunger rod handle forward forces any air pockets out of pump assembly. If your gun is equipped with an air release valve, press it. The air pockets may also be removed by depressing the steel ball on the loader fitting, if fitted on the grease gun head.
8. Pump the lever/pistol handle several times until grease flows from the coupler.



2.3 HOW TO SUCTION LOAD YOUR GREASE GUN:

NOTE: Always remove used cartridge from gun when suction loading.

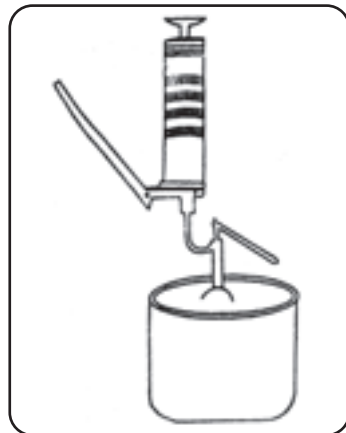
1. Unscrew the grease gun head from the barrel.
2. Check the rubber plunger direction before suction loading the gun. The direction of the rubber plunger should be such that the hollow portion of the rubber plunger faces the grease gun head. If the not the case, and the tapered portion of the rubber plunger is facing the gun head, then the plunger needs to be re-assembled. For re-assembling the plunger, refer to plunger re-assembling instructions on front page.
3. Insert the open end of the barrel about 50mm (2") into the grease.
4. Slowly pull the plunger rod handle while pushing the barrel deeper into the grease. Once the rod is fully extended, screw the gun head back onto the barrel.
5. Unlock the plunger rod handle from the end cap by slightly pulling the plunger rod back, and simultaneously depressing the lock lever. This action automatically disconnects the plunger rod from the rubber plunger assembly, allowing the rod to be pushed all the way into the barrel.
6. To prime the grease gun, slightly loosen the gun head & apply pressure to plunger rod handle by standing the grease gun on a workbench and pulling down on the barrel. Pushing the plunger rod handle forward forces any air pockets out of pump assembly. If your gun is equipped with an air release valve, press it. The air pockets may also be removed by depressing the steel ball on the loader fitting, if fitted on the grease gun head.
7. Pump the lever/pistol handle several times until grease flows from the coupler.



2.4 HOW TO BULK LOAD YOUR GREASE GUN USING A PUMP:

NOTE: Always remove used cartridge from gun when loading using a filler pump.

1. Unscrew the grease gun head from the barrel.
2. Check the rubber plunger direction before suction loading the gun. The direction of the rubber plunger should be such that the hollow portion of the rubber plunger faces the grease gun head. If this is not the case, and the tapered portion of the rubber plunger is facing the gun head, then the plunger needs to be re-assembled. For re-assembling the plunger, refer to plunger re-assembling instruction below.
3. Pull back the plunger rod handle fully. The lock lever mechanism automatically locks the rod. Screw the gun head back onto the barrel.
4. Wipe the loader fitting on the grease gun head clean.
5. Insert the loader fitting on the gun head onto the female loader adaptor on the grease gun filler pump.
6. Operate the pump to fill grease into the gun barrel. The number of strokes required to completely fill the gun barrel depends on the discharge per stroke of your grease filler pump and the barrel size of your grease gun.
7. Once the grease is filled into the gun barrel, remove the loader fitting from the pump. Unlock the plunger rod handle from the end cap by slightly pulling the plunger rod back, and simultaneously depressing the lock lever. This action automatically disconnects the plunger rod from the rubber plunger assembly, allowing the rod to be pushed all the way in the barrel.
8. Unlock the plunger rod handle from the end cap by slightly pulling the plunger rod back and simultaneously depressing the lock lever. This action automatically disconnects the plunger rod from the rubber plunger assembly, allowing the rod to be pushed all the way into the barrel.
9. To prime the grease gun, slightly loosen the gun head and apply pressure to the plunger rod handle by standing the grease gun on a workbench and pulling down on the barrel. Pushing the plunger rod handle forward forces any air pockets out of pump assembly. If your gun is equipped with an air release valve, press it. The air pockets may also be removed by depressing the steel ball on the loader fitting, if fitted on the grease gun head.
10. Pump the lever/pistol handle several times until grease flows from the coupler.



3. TROUBLESHOOTING

3.1 PLUNGER RE-ASSEMBLY

1. **The gun pumps little or no grease:** Most likely, this is due to trapped air pockets in the grease. Prime the gun, as per instruction above. Other possible reasons, with their remedies could be:
 - a) Rubber plunger stuck in cartridge: Check condition of cartridge, and replace if damaged. This can also happen, if the rubber plunger is assembled for bulk fill, with the hollow portion of the rubber plunger facing the gun head. The same may be corrected by reassembling the rubber plunger for cartridge fill applications. Refer to plunger re-assembling instructions.
 - b). Grease too thick or too cold: Consult grease supplier. Store grease gun and grease away from extreme cold.
 - c). Outlet nozzle ball seal dirty or damaged: Disassemble the outlet nozzle components. Clean and inspect all components. Replace as required.
2. **Grease leaks past the rubber plunger:** This is most likely due to the wrong assembly of the rubber plunger. For bulk suction fill applications, the rubber plunger must be assembled such that the hollow portion of the rubber plunger faces the gun head. Whereas for cartridge applications, the tapered rubber plunger must face the gun head. Re-assemble the rubber plunger. If incorrectly assembled, follow plunger re-assembling instructions.
3. **Grease leaks from the gun nozzle where the grease extension is fitted onto the gun or from the extension coupler joint:** This most likely is due to worn out threads either on the extension or the gun nozzle/coupler. Use a sealant such as non-stick tape over the extension threads, and then thread on the gun nozzle/coupler.

This is a general instruction sheet. It covers a variety of models. The illustrations may not match your gun exactly.