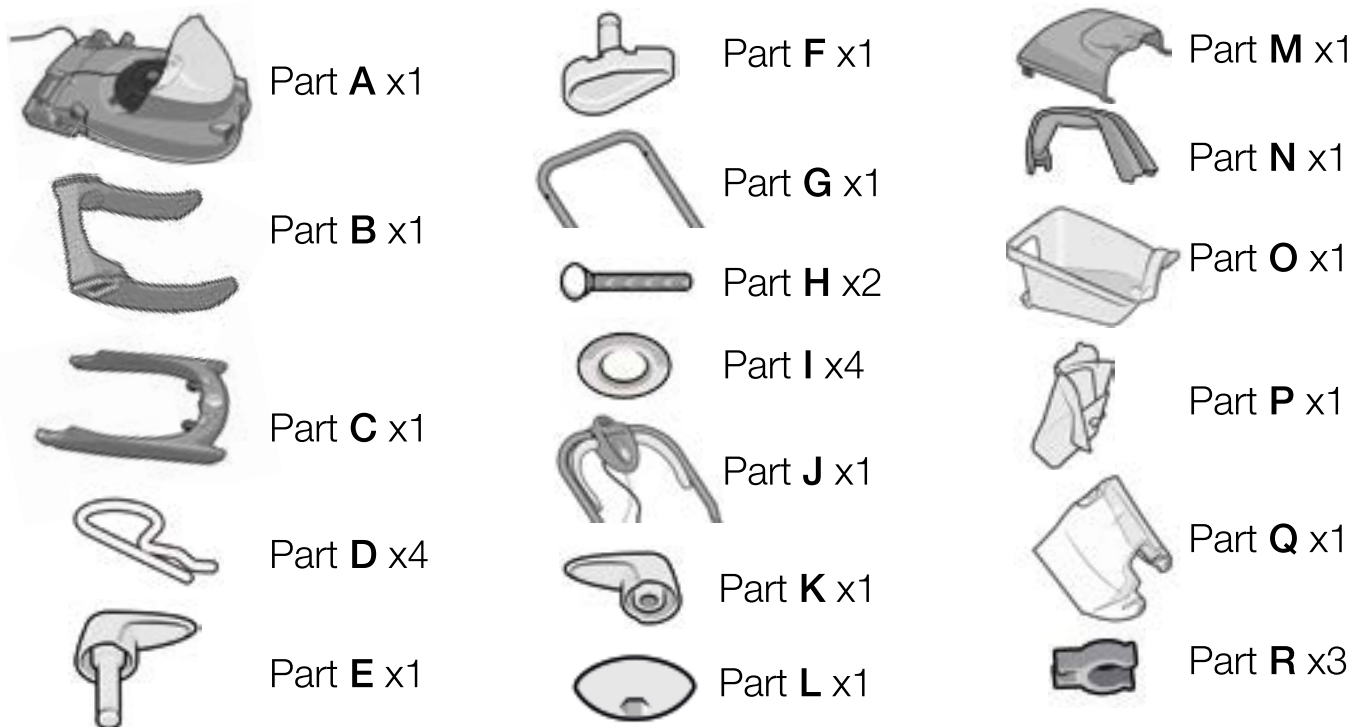


# Flymo®



## Contents of the box

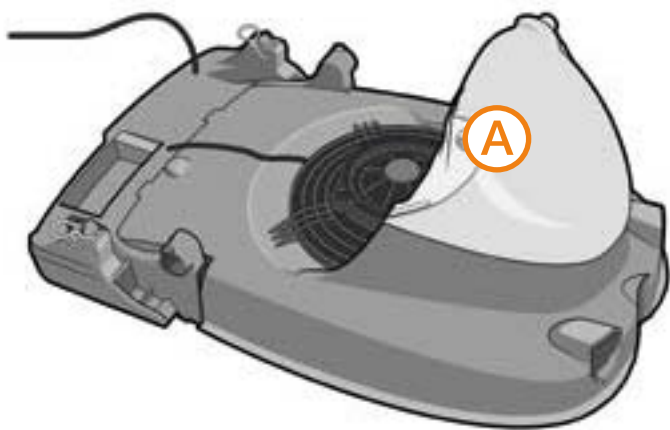
The illustration below shows you all the components needed to complete the self assembly of your Flymo Glider Compact 330VC/VCX hover lawnmower.



If you do not have all of these items, please contact:

**Flymo Customer Services Department** to arrange replacements on **0344 844 4558**  
or email: [customer.services@husqvarna.co.uk](mailto:customer.services@husqvarna.co.uk)

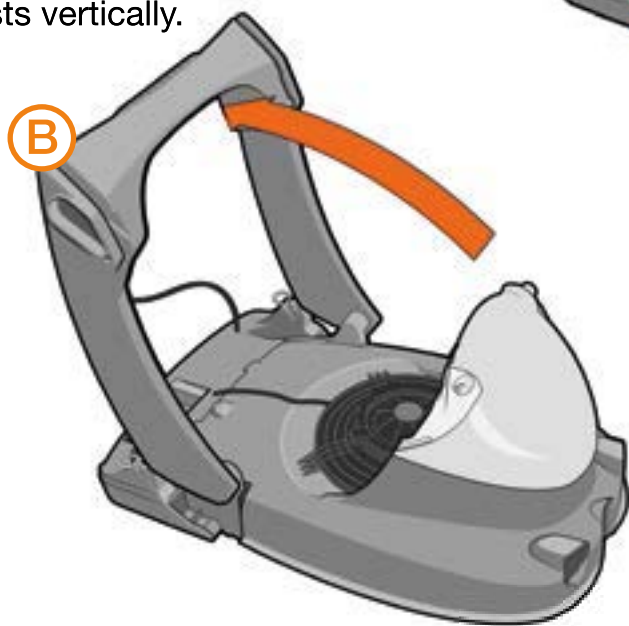
- 1** Place lawnmower base (A) on a flat surface.



- 2** Align the handle support (B) with the lawnmower base (A) as shown and locate the holes to attach.



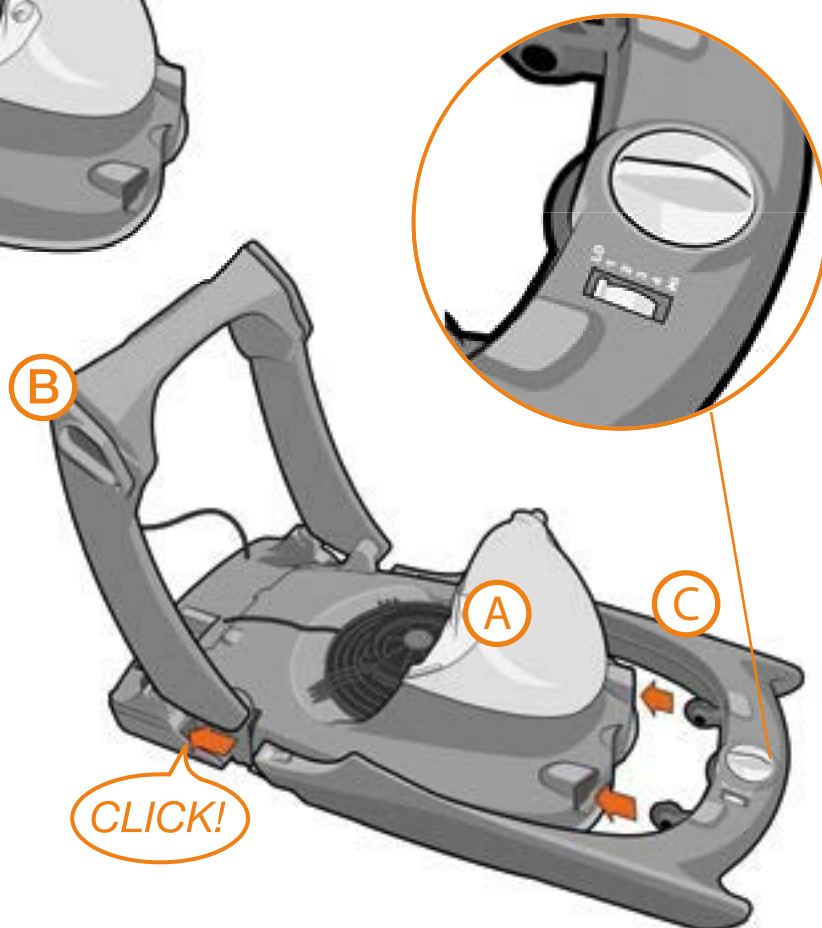
- 3** Raise handle support (B) to upright position until it rests vertically.



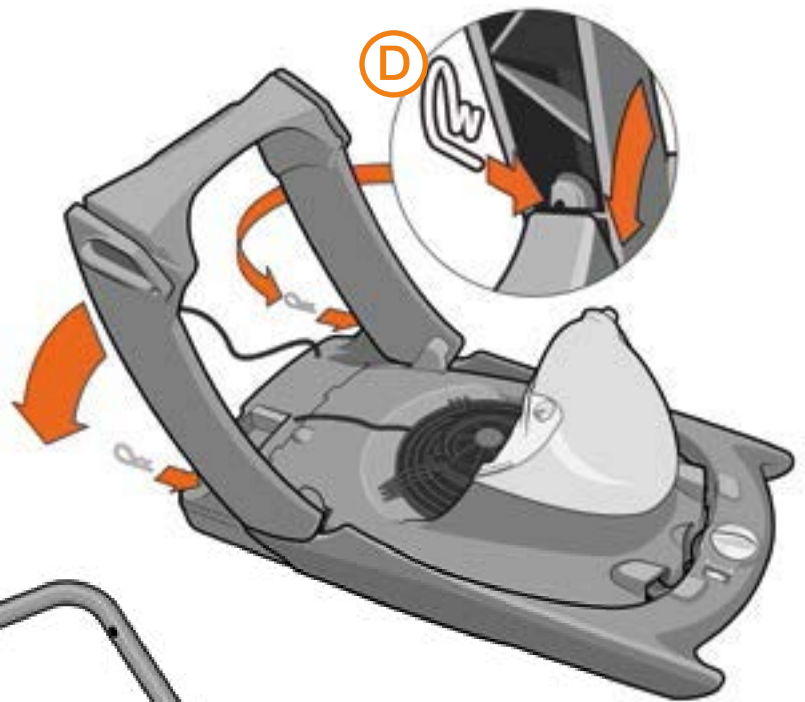
- 4** Align the bumper (C) and lawnmower base (A) as shown.

Ensure dial on bumper is at position 1. Keeping the handle support (B) upright, push the bumper firmly into place and ensure it clicks into position at the side.

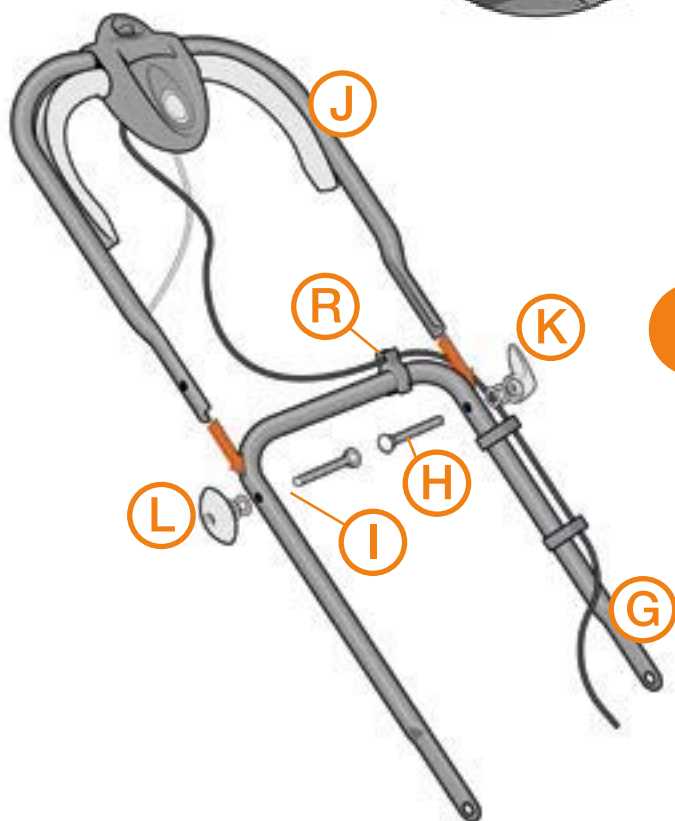
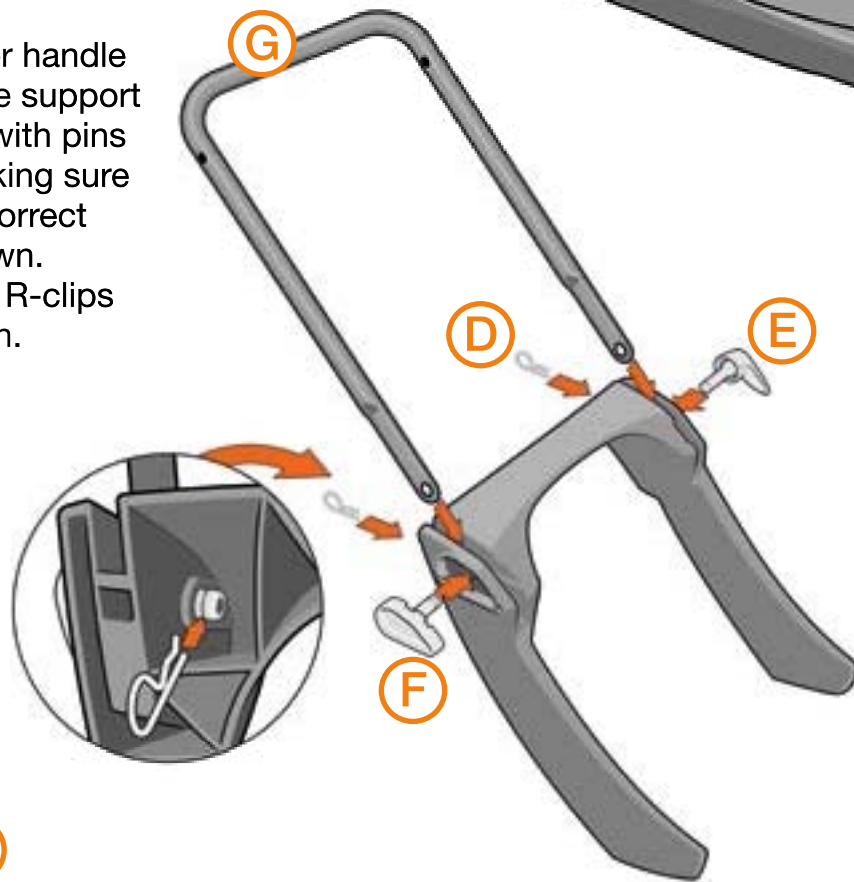
There will be a slight gap between the lawnmower base and the bumper at the front.



- 5** Remove R-Clips (D) from the holes. Push firmly down and hold handle support so holes are visible inside the handle support. Re-Insert R-clips into each hole to fasten down as shown.

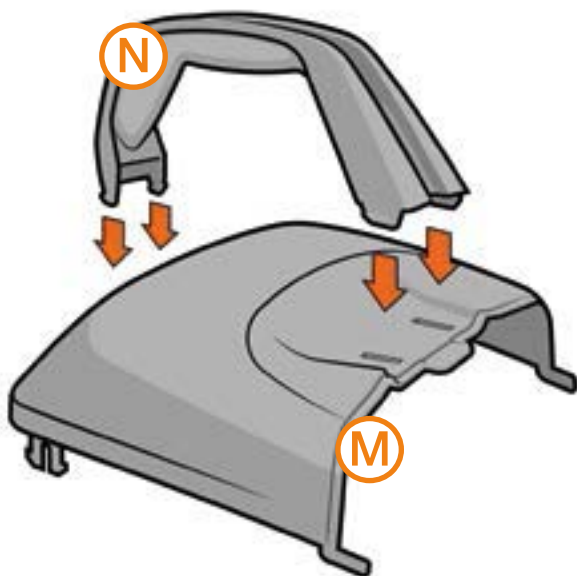


- 6** Locate lower handle (G) to handle support and attach with pins (E) & (F) making sure they are on correct side as shown. Secure with R-clips (D) as shown.

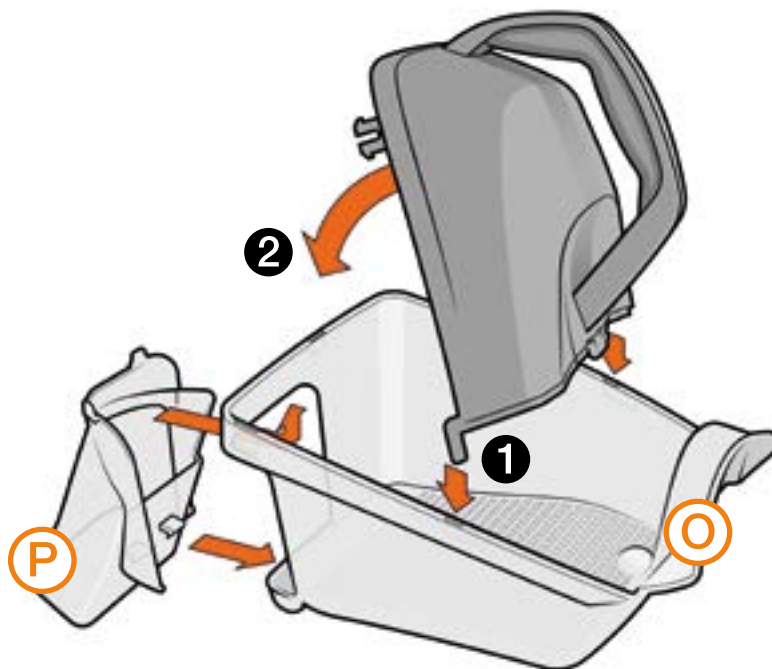


- 7** Locate upper handle (J) into position and secure both sides with a bolt (H), 2 washers (I) and wing nut (L) & (K) making sure they are on the correct side. Use cable clips (R) to secure cable to handles.

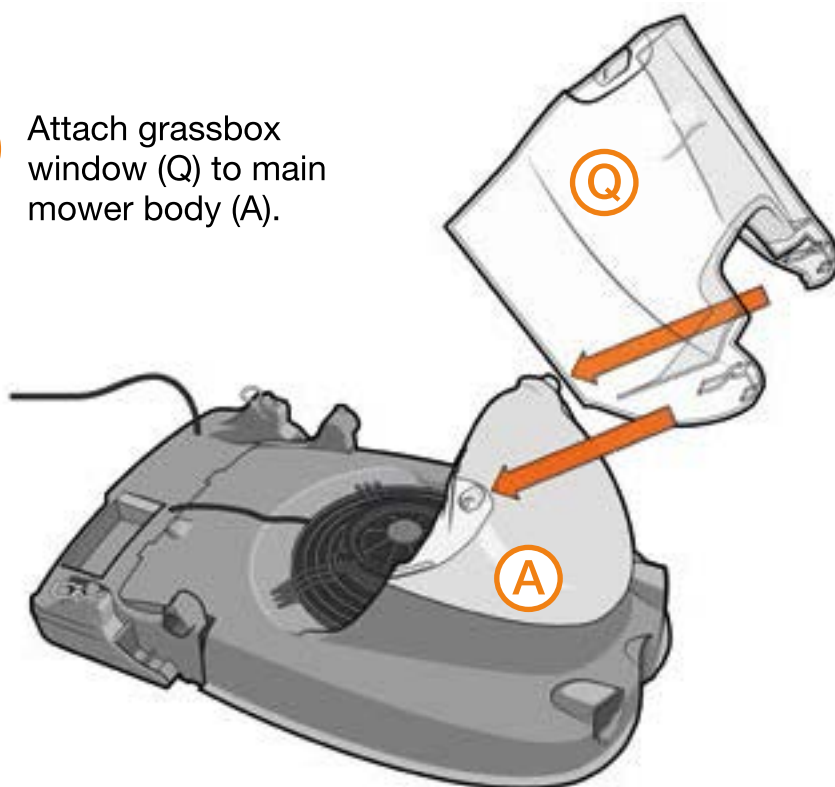
- 8** Attach handle (N) to grassbox lid (M)



- 9** Attach grassbox lid (M) into grassbox lower, first in direction 1 and then 2 as shown. Attach chute (P) to rear of grass box as indicated.



- 10** Attach grassbox window (Q) to main mower body (A).



**Visit [flymo.com](https://flymo.com) for a step by step demonstration or scan QR code**