



OPERATOR'S MANUAL AND PARTS LIST 800W ELECTRIC TILLER - THET-A

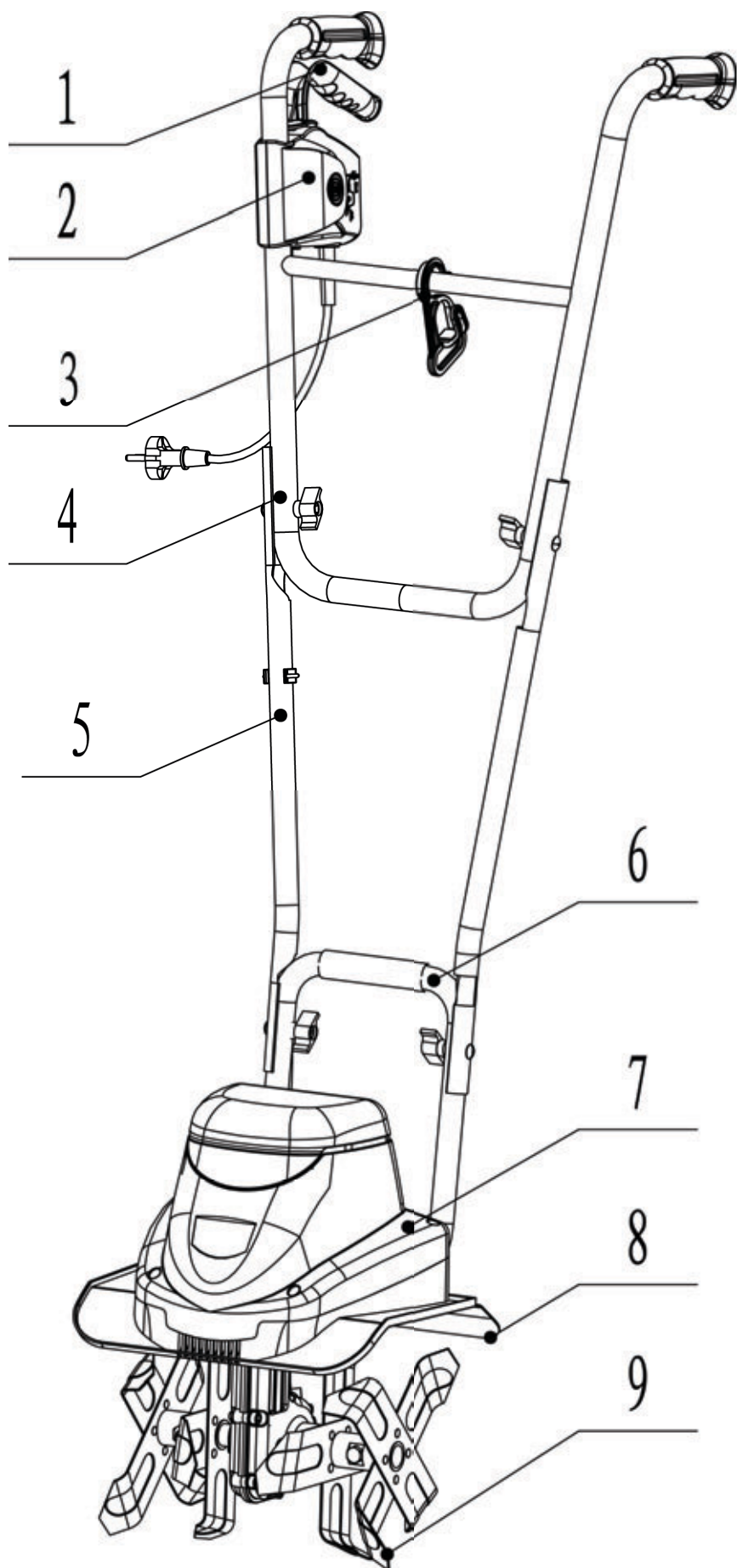
Sales & Helpline 01793 333212

www.thehandy.co.uk

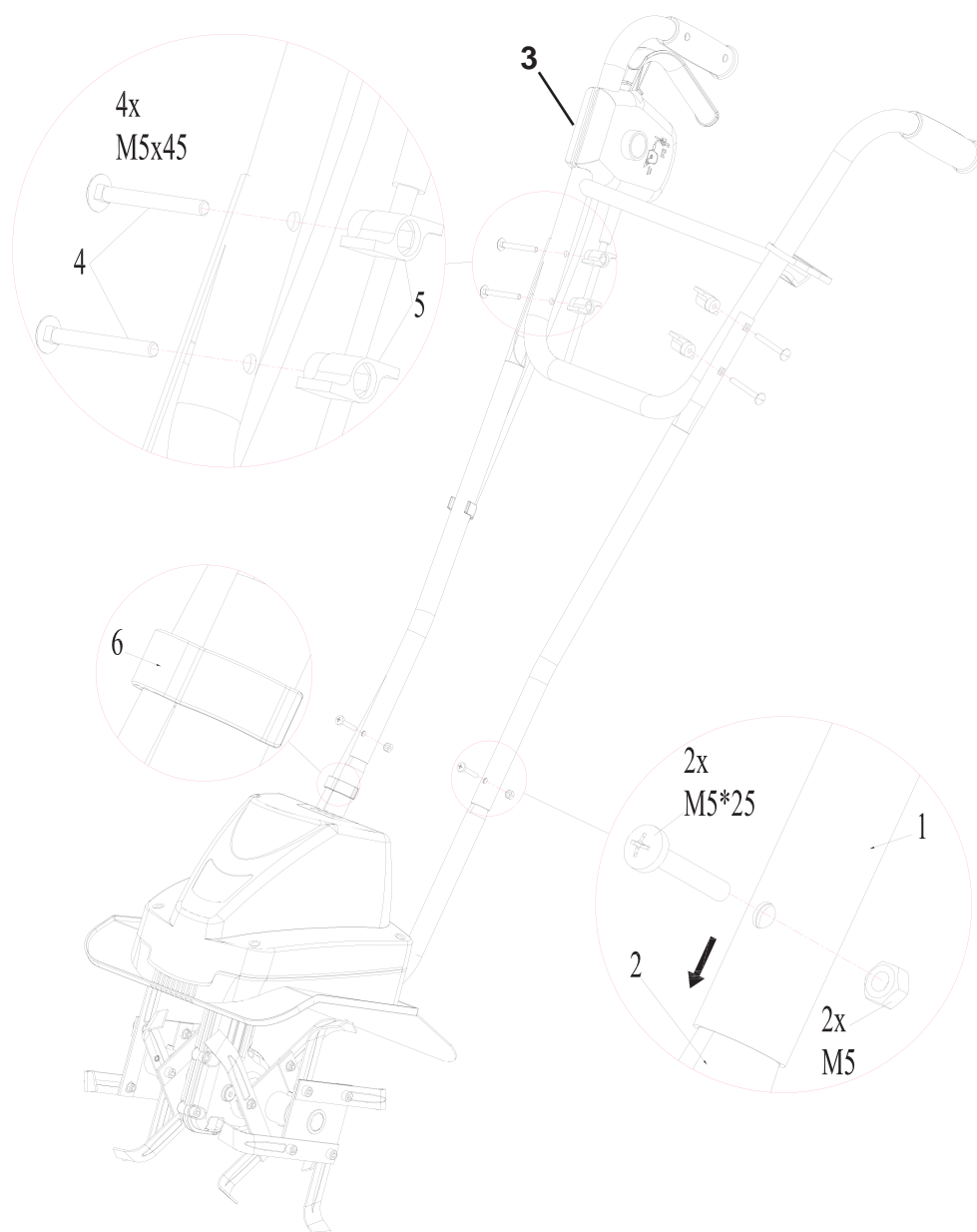
Before use please read & understand this manual, paying particular attention to the safety instructions.

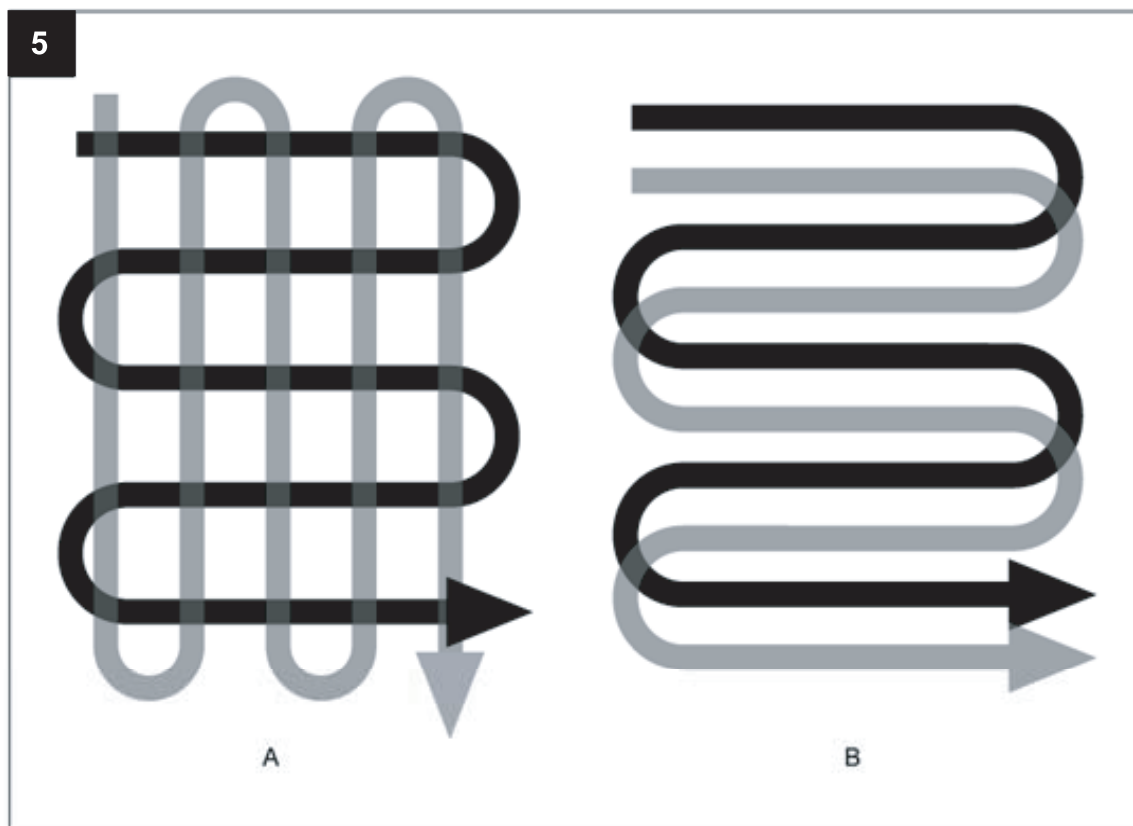
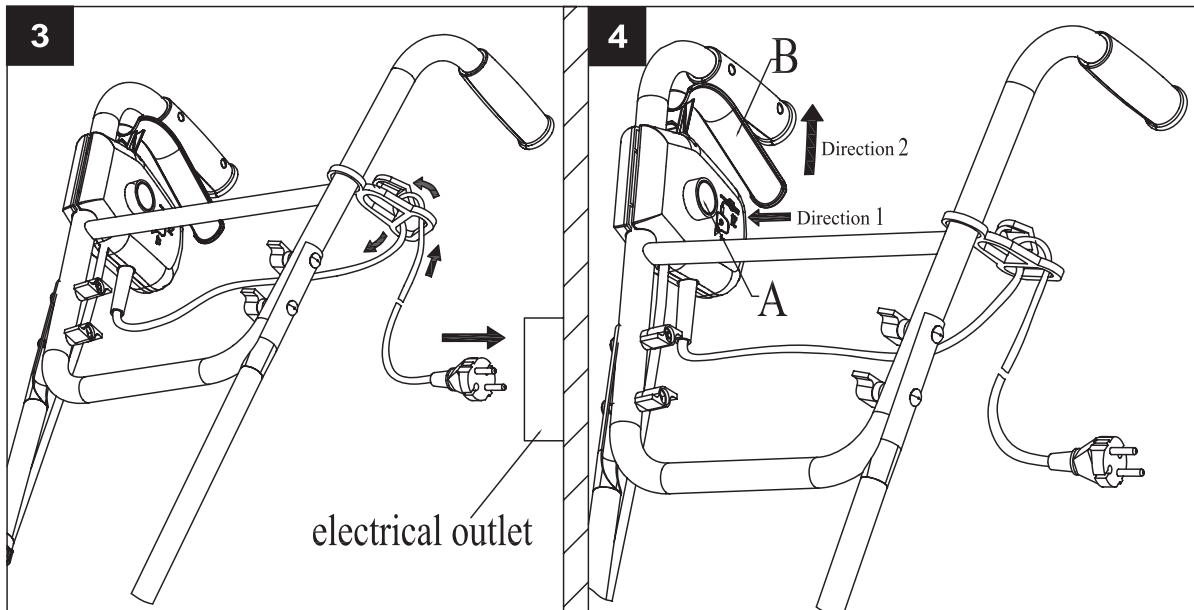
Contents	
DIAGRAMS	3
SAFETY INSTRUCTIONS	7
APPLICATION CONDITIONS	8
SPECIFICATIONS AND ELECTRICAL REQUIREMENTS	8
ASSEMBLING THE TILLER	8
STARTING THE TILLER	8
TIPS	9
MAINTENANCE AND STORAGE	9
TROUBLE SHOOTING	11
PARTS DIAGRAM	12
EC DECLARATION OF CONFORMITY	14

DIAGRAMS

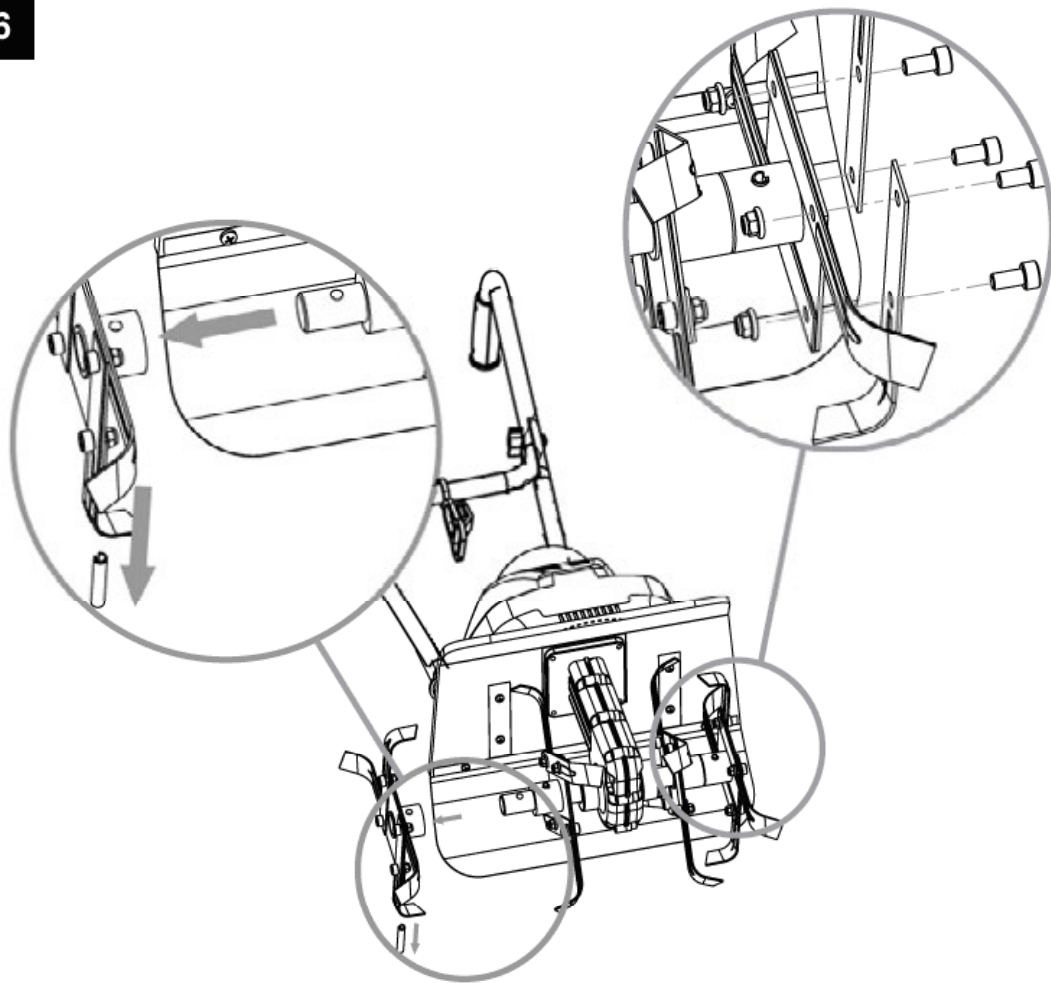


1	Trigger Lever
2	Safety Switch
3	Cable Relief
4	Upper Handle
5	Carrying Handle
6	Lower Handle
7	Fender
8	Protective Shield
9	Tines

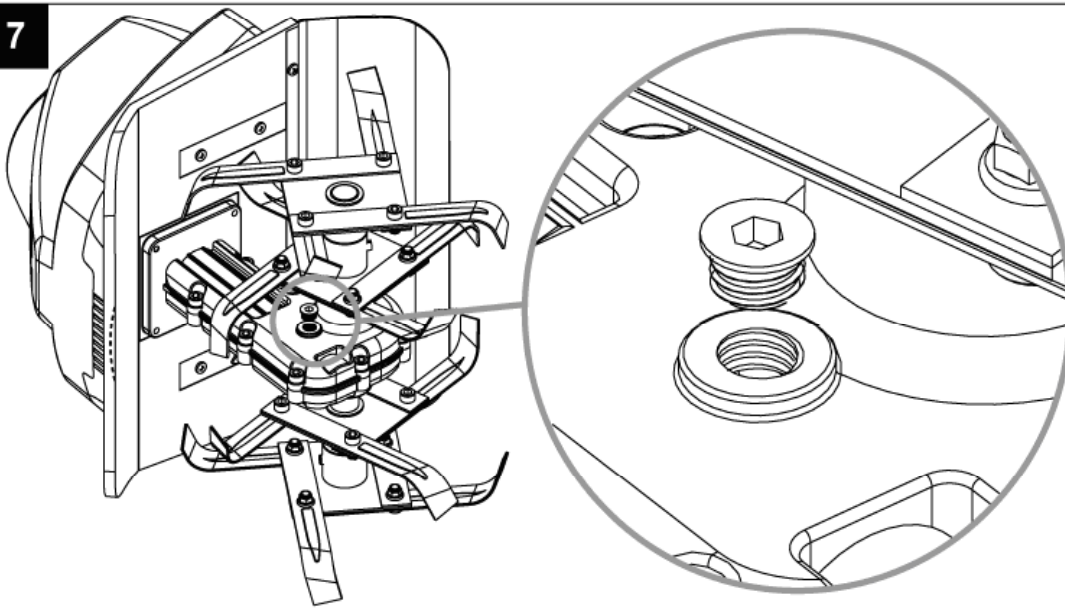




6



7



SAFETY INSTRUCTIONS

- **Read and understand the owner's manual and the labels affixed to the electric tiller. Learn its application and limitations as well as the specific potential hazards. Retain these instructions for reference.**
- Check your tiller before use. Keep guards in place and in working order. You should only work with a machine that is in good condition. If you notice any defect on the machine that may cause damage to the operator, do **NOT** operate until faults have been rectified. Replace worn or damaged parts using only original spare parts.
- Do **NOT** operate the electric tiller whilst under the influence of drugs, alcohol or any medication that could affect your ability to use the apparatus correctly.
- Dress appropriately – do **NOT** wear loose clothing, ties, jewellery or anything that could be caught in the moving tines. Use of gloves and strong footwear are recommended.
- Only work in daylight or sufficiently good artificial light.
- Keep children and pets away from the tiller at all times and do NOT operate near underground electric cables, telephone lines, pipes or hoses.
- Wear eye protection and a face or dust mask if working in dusty conditions.
- Before use make sure the socket ratings are correct and correspond to those indicated on the rating label on the tiller.
- Do NOT operate on a slope that is too steep for safe operation. When on slopes, slow down and make sure you have good footing.
- Never operate the machine with one hand and be aware that, if the tines hit stones, frozen ground or buried roots and stumps, then it may unexpectedly bounce upward and jump forward.
- Be aware of the extension lead and be careful not to trip over it or pass the tiller over it. Always guide the lead away from the tines at all times and keep behind your back.
- If the tines hit a large stone, stump or other obstacle immediately
to the tines. If the machine starts to vibrate abnormally switch
and check for causes.
- Always switch off the machine, disconnect the plug and wait for the tines to stop turning before carrying out any inspection or maintenance. **The tines will not stop immediately after switching off.**
- It is prohibited to move or modify any of the electrical and mechanical safety devices.



Electrical Safety:-

- The mains voltage must correspond to the one marked on the technical data plate (230V-50Hz). Do not use any other source of power. The use of a circuit breaker is recommended for an intervention range of 10 to 30 rated mA.
- Make sure you always know where the cable is and never pass the tiller over the cable to avoid cutting the cable with the tines.
- Do NOT use the machine in the rain and do NOT leave it outside overnight. Try to prevent it getting wet or being exposed to humidity.
- Check the power cable regularly to ensure it is not damaged. Only use an extension cable which is suitable for outdoor use. If cable is damaged arrange for replacement before further use.
- The mobile socket of the extension cable should be splash proof in compliance with DIN57282 and VDE 0282 regulations; the cross section of the wire (max length 75m) should be at least 1.5mm². Use H07RN-F harmonised cable.

APPLICATION CONDITIONS

The tiller is only intended for private domestic use. It is not designed for use in public areas, sports areas or in agriculture and forestry. Use the tiller for breaking up sods, preparing seed beds and for cultivating gardens and flower beds. The tiller can also dig small holes for planting saplings or plants.

Using the tiller for any other purpose is considered inappropriate and unapproved use and the manufacturer is not liable for any damages or injuries resulting from such use. The user is entirely responsible for any associated risks.

The tiller has double insulation which means that all external metal parts are insulated from the electrical supply. This is achieved by introducing an insulation layer between electrical and mechanical parts, thereby guaranteeing you the greatest possible safety.

If the tiller is blocked by a foreign object or if the motor is overloaded, the motor will switch off automatically. Release the trigger and wait until the motor has cooled down (approx 15mins) before restarting.

SPECIFICATIONS AND ELECTRICAL REQUIREMENTS

Model No		THET-A
Working Width		30cm
Working Depth max		20cm
Weight		8.5kgs
Motor		230v, 50Hz, 800W
Idle Speed		400rpm
Noise Power Level	Lwa	93dB(A)
Noise Power Level	Lpa	73.7dB(A)
Vibration		2.5m/s ²
Hydraulic Pressure		24Mpa
Hydraulic Oil Capacity		2.9L

ASSEMBLING THE TILLER

Refer to Fig 2:

You will need a Phillips screwdriver and a 8mm spanner

- Insert the two middle sections of the handle (1) to the bottom section (2) using the two screws and nuts supplied. Tighten.
- Connect the upper handle to the middle sections using the four bolts (4) and wing nuts (5) supplied.
- Attach the switchbox to the upper handle on the right hand side and fix using the two black screws supplied(3).
- Secure the black cable to the handle side using the two cable clips supplied (6).

STARTING THE TILLER

- Plug into the mains and secure the extension cable to the cable relief as shown in Fig 3. The loop of the main cable must be long enough for the cable relief to be able to slide from one side to the other.
- Move the tiller to the work area before switching on.
- Press the green safety lock button (A) and pull the trigger lever (B) against the bar. The motor will start and the tines will begin to rotate.
- Keep the trigger squeezed and release the safety lock button.
- To stop, release the trigger.
- **Caution:** the tines will still rotate after the trigger is released.

TIPS

- Hold the tiller firmly when switching on as it may jump when the tines start rotating.
- The tines will pull the tiller forward during operation – press down on the handle to dig the tines into the soil.
- By pulling the tiller backwards the tines will dig deeper and more aggressively take care not to trip over and keep the cable clear.
- For breaking sod or deep tilling, allow the tines to move forward to arms reach and then pull back firmly. By repeatedly allowing the tiller to move forward and backward, cultivating will be more effective.
- If the tiller digs deep enough to stay in one spot, rock gently from side to side to move the tiller forward again.
- For preparing seed beds we recommend you use one of the patterns shown on Fig 5 – either make two passes at right angles to each other, or make two passes side by side with the second overlapping the first.
- Take care when transporting the machine. Always carry the tiller to avoid causing damage to the tines when moving over hard ground.
- Clear the tines of all debris, roots, stone etc regularly when using. If weeds are wrapped round the tines you may have to remove the tines as shown in the manual.

MAINTENANCE AND STORAGE

Before carrying out any maintenance, disconnect from the power source.

- Before each use check cable for signs of damage and replace if necessary.
- Check that tines are not blunt and all threaded connections are securely tightened.
- At the start of the season lubricate the tines and shaft. At the end of the season we recommend that the tiller is serviced by a specialist workshop.

Always clean the tiller after each use – wear protective gloves when cleaning the tines.

- Clean the underside of the tine housing and the protective shield and fender with a scrubbing brush or cloth dampened with mild soap and water. **Never splash with water.**
- To remove soil and debris from the tines and transmission, use a stiff brush or dampened cloth.
- Clean the ventilator and remove any remaining grass or dirt.
- Once cleaned, wipe the tines and shaft dry and apply a light coat of oil.

Tines Removal and Installation

Worn tines can cause poor performance and overload motor. Sharpen or replace tines with new ones if necessary.

To remove tines:

- Remove the lock pin from the end of the shaft.
- Take off the outer tine set from the shaft.
- Remove the lock pin and take off the inner tine set from the shaft.
- Reverse above steps to install tines.

When one or two pieces of tine are broken you can change the damaged tines instead of replacing the complete set.

- Loosen the screws from one side whilst holding the lock nuts from the other side.
- Take off damaged tine and replace with new one.

Checking Transmission Lubricant (Fig 7)

- The drain screw plug (1) is located on the right side of the transmission housing.
- Lay the tiller on its left side and clean the transmission of dirt and debris. Remove the drain screw.
- Use a 5mm to unscrew the plug.
- Fill up using a grease gun and a high quality automotive grade grease until it begins to seep out around the edge of the hole of the nozzle.
- If necessary, disassemble the tines.
- Reinstall the drain screw plug.

Storage

The tiller should be stored in a dry room out of the reach of children.

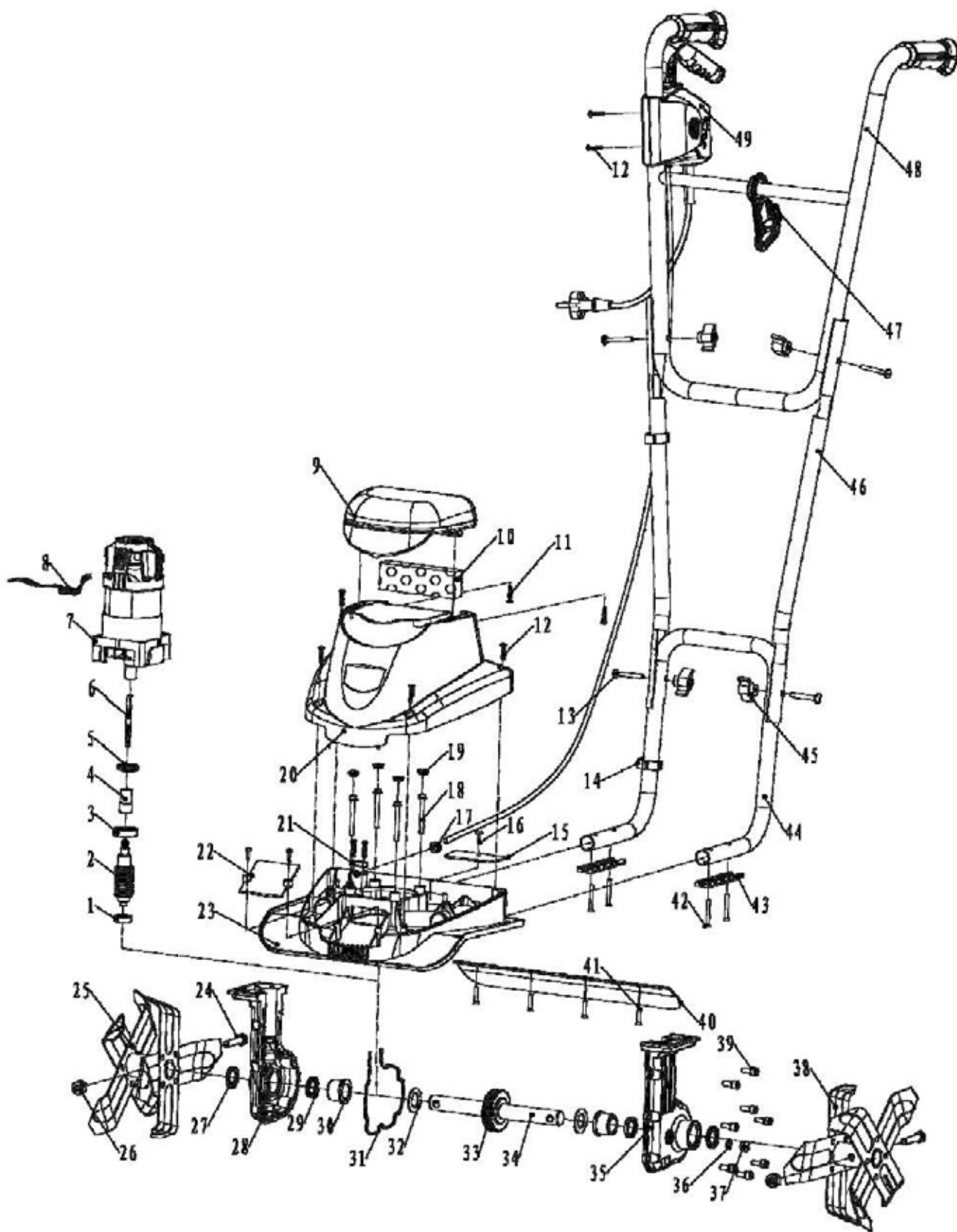
At the end of the season, or the tiller is not going to be used for some time:

- Clean the tiller
- Wipe over the metal surfaces with an oil-impregnated cloth to protect them from corrosion (non-resinous oil) or spray a fine coat of oil onto them from a can.
- Fold the top handle down for ease of storage.

TROUBLE SHOOTING

Problems that may arise when using the tiller and some recommended actions and checks are shown in the table below:

Problem	Probable Cause	Corrective Action
Motor does not start	No electricity Defective Cable Defective safety switch/plug combination Overheat protection activated	Check mains connection Check cable, replace if necessary or have existing cable repaired professionally Arrange for repair in specialist workshop) Blades blocked – remove blockage) Soil too hard – move tiller forward and backward several times slowing down the speed. Allow motor to cool down before restarting
Abnormal noises	Blade is jammed Lubrication ing out Loose bolts, nuts or other securing components	Switch off and when completely stopped remove objects Arrange for repair in specialist workshop Tighten all components, contact specialist dealer if noise
Abnormal vibration	Blades damaged or worn	Replace or have checked by specialist dealer
Poor results	Wor	e



Position	Description	Quantity
TH165-1	Bearing 608Z	1
TH165-2	Worm Shaft	1
TH165-3	Bearing 6200	1
TH165-4	Coupler	1
TH165-5	Rubber Seal 2	1
TH165-6	Flexible Shaft	1
TH165-7	Motor Complete	1
TH165-8	Inductor	1
TH165-9	Cover	1
TH165-10	Sponge Strip	1
TH165-11	Screw ST3.5x16	4
TH165-12	Screw ST3.9x19	14
TH165-13	Screw M6x45	4
TH165-14	Cable Clip	2
TH165-15	Exhaust Back Cover	1
TH165-16	Screw ST3x12	-----1
TH165-17	Cable Sleeve	1
TH165-18	Screw M5x48	4
TH165-19	Capping Plug	4
TH165-20	Motor Housing	1
TH165-21	Cable Holder	1
TH165-22	Exhaust Cover	1
TH165-23	Fender	1
TH165-24	Screw M8x40	2
TH165-25	Tines Set 2	1
TH165-26	Nut M8	2
TH165-27	Ring	2
TH165-28	Transmission Case Right Section	1
TH165-29	Rubber Seal	2
TH165-30	Oil Bearing	2
TH165-31	Seal	1
TH165-32	Washer	2
TH165-33	Worm Wheel	1
TH165-34	Shaft	1
TH165-35	Transmission Case Left Section	1
TH165-36	O Ring	1
TH165-37	Drain Screw Plug	1
TH165-38	Tines Set 1	1
TH165-39	Screw M6x16	6
TH165-40	Protective Shield	1
TH165-41	Screw ST4.2x19	4
TH165-42	Screw ST4.2x32	4
TH165-43	Handle Holder	2
TH165-44	Handle Lower Section	1
TH165-45	Swing Nut	4
TH165-46	Handle Middle Section	2
TH165-47	Cable Hook	1
TH165-48	Handle Upper Section	1
TH165-49	Safety Switch Combination	1



EC Declaration of Conformity

We, Importer
Handy Distribution Ltd.
SN3 4NS

Declare that the product
Designation: 800W ELECTRIC TILLER
Model: THET-A

Complies with the following directives:

2006/42/EC- Machinery Directive
2006/95/EC- Low Voltage Directive
2004/108/EC- Electromagnetic Compatibility Directive
2000/14/EC amended by 2005/88/EC- Noise Emission in the Environment by Equipment for
Use Outdoors Directive.

The conformity assessment procedure followed was in according with Annex V of the
Directive 2000/14/EC.

-Measured Sound Pressure Level: 89.52 dB (A)
-Guaranteed Sound Power Level: 93 dB (A)

Standards and technical specifications referred to:

EN60335-1:2002+A13
EN709: 1997+A4
EN62233: 2008
EN55014-1:2006
EN55014-2:1997+A1
EN61000-3-2:2006
EN61000-3-3:1995+A1+A2

Authorised signatory and technical file holder

Date: 24/11/2010

Signature: _____

Name / title: Mr. Simon Belcher / Managing Director

Hobley Drive, Stratton St Margaret, Swindon, Wiltshire, SN3 4NS

To order spare parts and see the complete range of garden machinery and garden equipment from Handy, visit:

www.thehandy.co.uk

Spares & Support: 01793 333212

